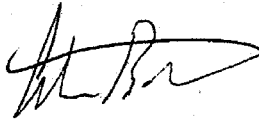


ANIMAL HEALTH REPORTING

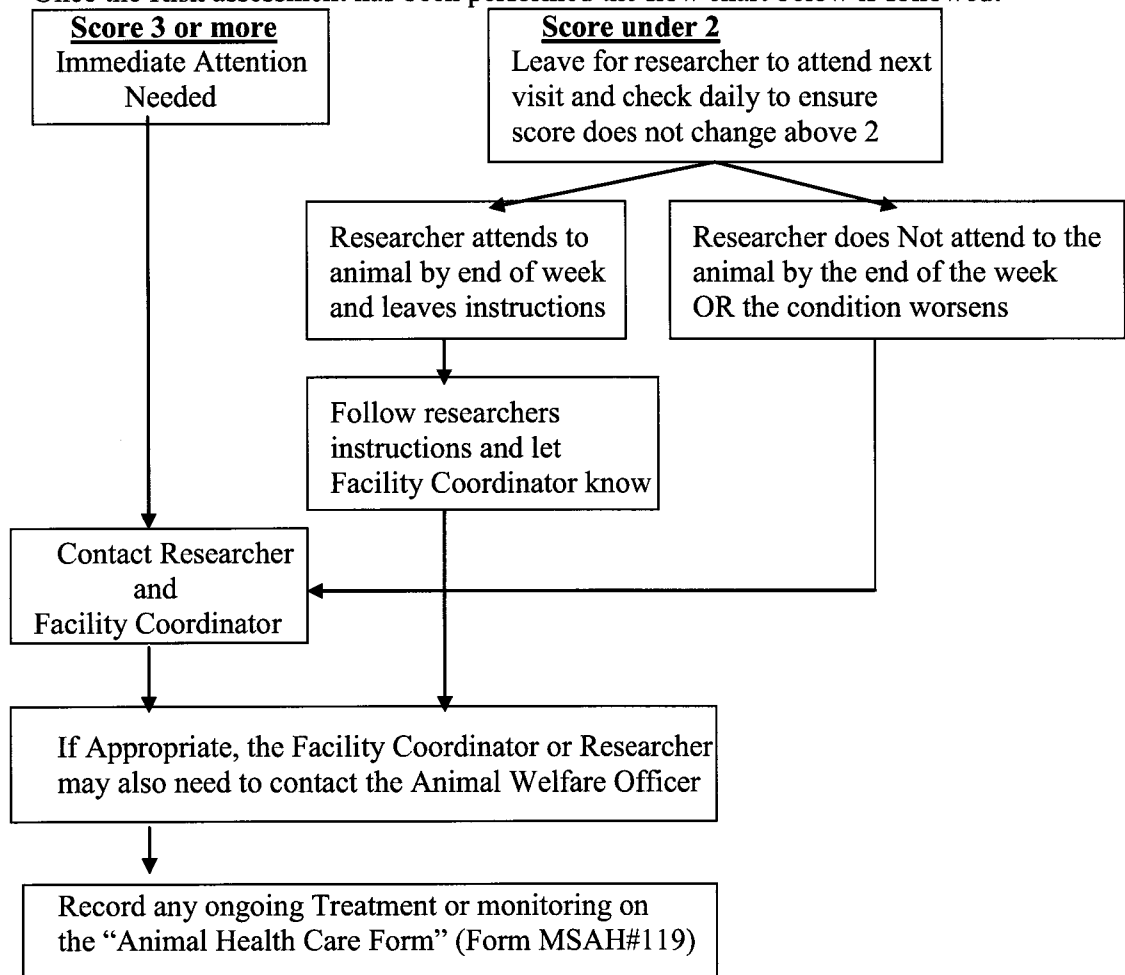
SOP No: MSAH #49
Prepared by: Sarah Fisher
Version: B
Reviewed: 12/5/2010
Authorised By: Andrew Bartlett, Manager

Signed:



1. Discovery of a sick or injured animal

- 1.1 In the event of a sick or injured animal(s) the Laboratory Animal Technician must fill out an "Orange Card" detailing the observation, and place it on the related cage.
- 1.2 An "Animal Health Care Form" (Form MSAH#119) is to be completed in the room.
- 1.3 The technician must then perform a *Risk Assessment* to assess whether the animal must be attended to immediately or if the problem can be left until the researcher is next in to check their animals.
- 1.4 The risk assessment is performed using the "Clinical Record sheet" scoring system, specific for the species, and if a score of 3 or more is observed the animal is to receive immediate attention.
- 1.5 Once the Risk assessment has been performed the flow chart below is followed:



2. Notifying the researcher

- 2.1 When notifying the researcher, the 'contact' person for the project is to be contacted first. If they are not available or directed to do so by the contact person, then the Principal Investigator should be contacted.
- 2.2 If the contact person or principal investigator is unable to be contacted, the Facility Coordinator and/or Animal Welfare Officer is to be contacted to assess the animal and prescribe appropriate treatment/action.
- 2.3 If the technician still has concerns or questions, the Facility Coordinator and/or Animal Welfare Officer is to be contacted to assess the animal and prescribe appropriate treatment/action in conjunction with the principal investigator.

3. Ongoing Treatment

- 3.1 The animal technician should monitor the animals condition DAILY for 7 days and give treatment prescribed by the researcher, facility coordinator or animal welfare officer.
- 3.2 If the animal's condition worsens within these 7 days then the researcher, facility coordinator and animal welfare officer should be notified immediately.
- 3.3 If the animal's condition has not changed for 7 days then the researcher, facility coordinator and animal welfare officer should be notified to re-assess the animal for additional or alternative treatment or monitoring.
- 3.4 Additional monitoring may be the use of a Clinical Record Sheet specific for the species.

4. Concluding stages

- 4.1 Once the animal has recovered or the animal is no longer alive, the Animal Health Care Form (Form MSAH#119) is to be lodged with the Facility Coordinator.
- 4.2 The Facility Coordinator then enters the form into the Animal Health Care database, which is available for AEC inspection.