



VIETNAM WOMEN'S UNION

**IMPROVING WOMEN'S LIVING STANDARD**

**Through bussiness development and health  
education**

*Ms. Nguyễn Thị Tuyết Mai  
Director of Family and Social Affairs*

# VIETNAM WOMEN'S UNION

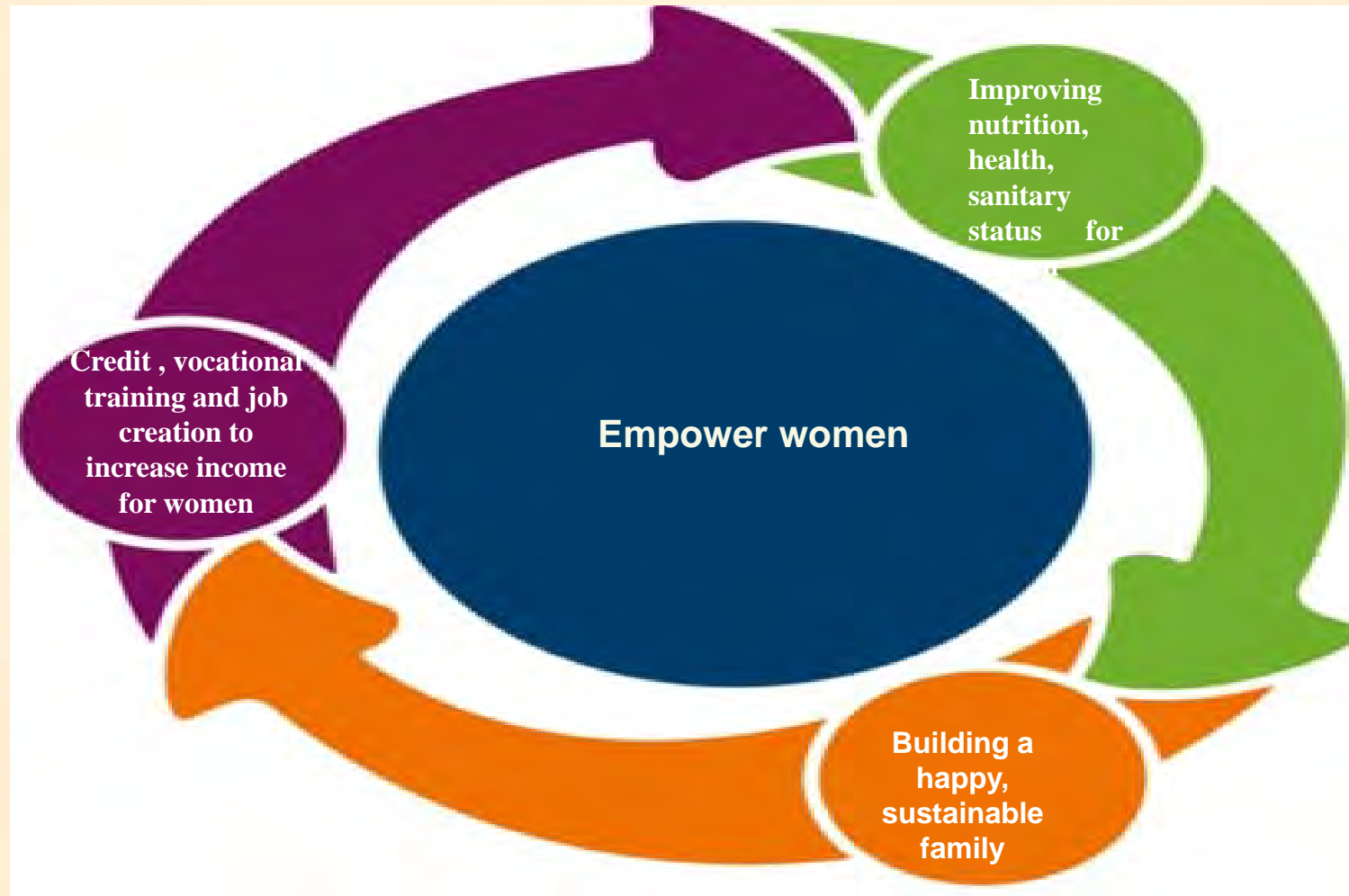
- Social - political organization, work for women's development and gender equality, mandated to protect women legitimate rights
- VWU has a wide network with 4 levels: central, provincial, district, commune including grassroot level at 63 provinces.



The programs on supporting women to improve nutrition status and empower women has been indicated in two main tasks of the organization as:

- (1) Mobilizing and assisting women in nurturing happy and sustainable family
- (2) Mobilizing and assisting women in economic development, sustainable poverty reduction and environmental protection.

# Empower women Strategies



## NUTRITION, HEALTH, SANITARY IMPROVEMENT

Improving living standard for 5 million mothers through educating, improving nutrition, health, sanitary status for women

We will help more than 1 billion people

Nutrition and health of children.

- Mobilizing 3,480 mothers to practice exclusive breastfeeding.
- Communication to 5 million mothers about the knowledge on protection from malnutrition.
- Communication and education on hands washing with soap for over 8 million children.

- Providing knowledge on Calcium supplements for 10,000 women.
- Providing knowledge on health and sanitary for 5 million women.
- Educating about hand washing with soap for rural women.



## BUILDING HAPPY FAMILY

Mobilizing to implement the campaign “Building a family of 5-withouts and 3-cleans”

Facilitating for women to better undertake mother role, promoting gender role and practice gender equality in the family.



## IMPROVING LIVING STANDARD

Improving living standard, poverty reduction for 8,3 million of women

Sustainable materials: 100% raw material from sustainable supply

- Job creation for 130,000 rural women
- Providing micro finance for 8,2 million rural households from entrusted activities and 10,000 women from cooperation program with UNILEVER Fund



# NUTRITION, HEALTH, SANITARY IMPROVEMENT

*7 million direct women beneficiaries and 19 million other indirect beneficiaries in which 2,6 million people participated in to training courses on nutrition and sanitary.*



## *Project NCBSM*

- *Project of educating 5 million mothers on good parenting.*
- *Program on protecting from children malnutrition.*
- *Program on protecting from osteoporosis.*

# Training on health care and nutrition for women in community



# Câu lạc bộ hỗ trợ PN CSSK và PC SDD TE tại cộng đồng

## Sinh hoạt CLB CSSK PN



## CLB gia đình ko có TE SDD



# Hội thảo vận động hỗ trợ CSSK PN





## Communication about nutrition meals

1. 10 nutrition advices from NIN
2. Benefits for the pregnant and breastfeeding women
3. Food safety
4. Oral hygiene



Communication through local media to remind People to keep the new habit by health care schedule

# IMPROVING LIVING STANDARD

*20.000 households loan 100 billion VND from the cooperation program with UNILEVER*

*Entrusted activities with the Bank for social policies at 50695 billion VND for 8,8 million women*



150 thousand of women get vocational training, job creation for 128 thousand women.

# Expanding agriculture projects

*Purchase 16,000 tons of sustainable quality tea*

*Technical support for **23,000** farmers in 6 provinces with IDH & RA*



# Microfinance program

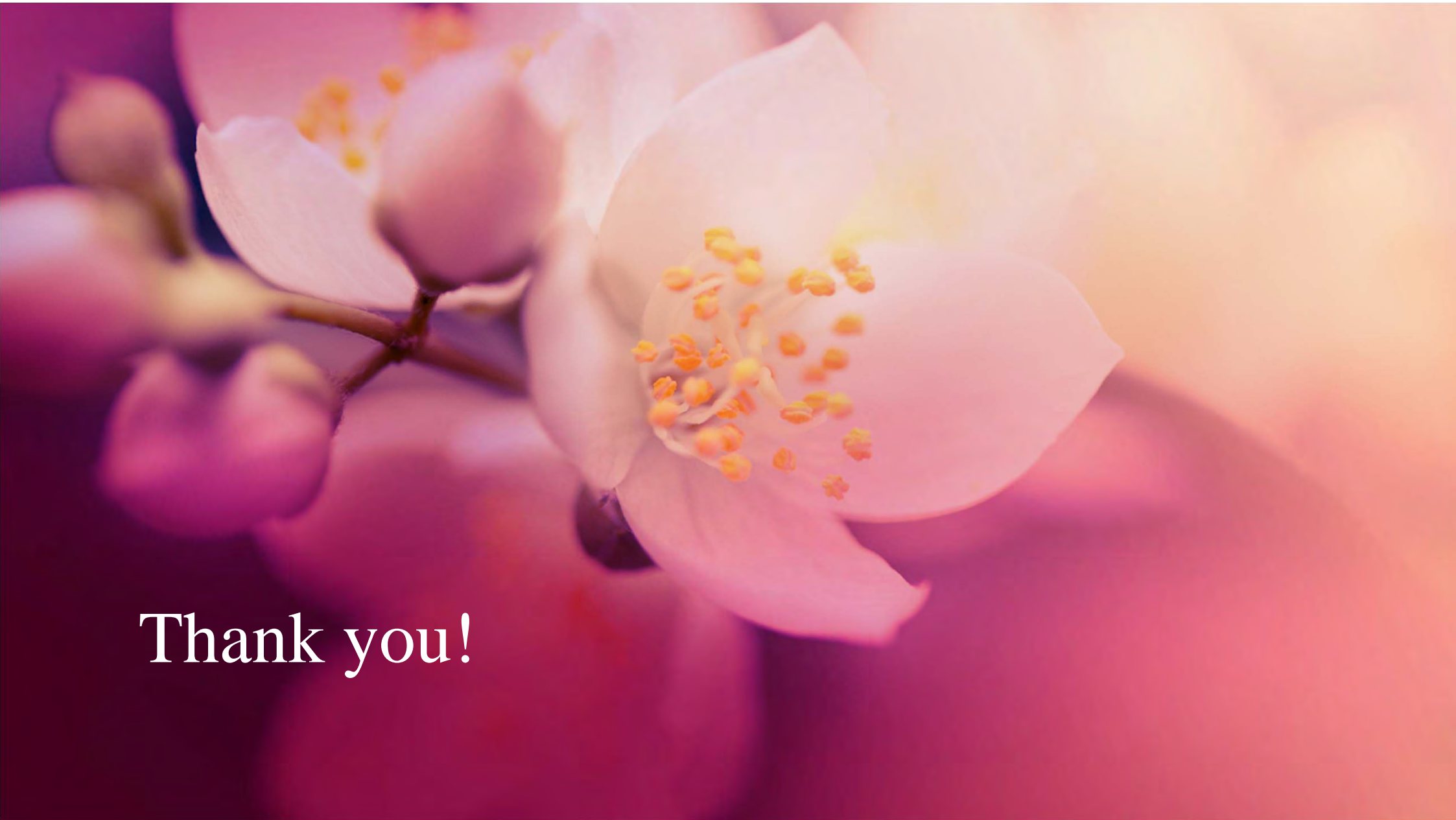


# Supporting women in vocational training and jobs creation



# Lesson learned

- Guidance from central to local WU in the implementing process.
- Strong cooperation with relevant institutes.
- Review the actual situation, expectation of women for health care. M&E in the implementing process to adjust aligning to the fact, to meet the need of women.
- Mobilizing for more resources to intergrate in to VWU's activities.
- Intergrating communication, knowledge providing on nutrition, health care into microfinance programs, savings groups.
- Using donor's properly.
- M&E tools to manage specific programs.
- Baseline survey and result assessment to measure impacts.



Thank you!