

Newsletter

Upcoming Events...

- **16-20 August**

The 4th international conference on community health nursing research 'Health in Transition' will be held in Adelaide, Australia.

- **2-4 September**

The Australian Research Alliance for Children & Youth (ARACY) will be holding its national conference in Melbourne, Australia. See Page 4.

- **6-10 September**

The 16th International Society of Developmental Biologists Congress will be held in Scotland, UK.

- **27-30 September**

The Fetal and Neonatal Physiological Society annual meeting will be held in Lake Arrowhead, USA.

- **6-9 October**

The International Federation of Placenta Associations annual meeting will be held in Adelaide, Australia.

- **25-28 October**

The Fertility Society of Australia annual meeting will be held in Perth, Australia.

Further information at www.adelaide.edu.au/hda/events

LATEST NEWS

HDA Finalists in SA Science Awards

The contribution our world class scientists make to the state has been highlighted in the naming of the finalists in the 2009 South Australian Science Excellence Awards.

Excellence in Research Collaboration **Healthy Development Adelaide**

The other finalists are CLLAMMecology Research Cluster and the International Centre of Excellence in Water Resources Management.

HDA Co-Convenor Finalist in SA Science Awards 2009

South Australian Scientist of the Year **Professor Robert Norman**

HDA Co-Convenor, Director of The Robinson Institute, University of Adelaide. Professor Norman has produced world class results in fertility and reproductive biology and is one of the world's most respected authorities on reproductive health and science.

Other finalists are Professor Fran Baum, Flinders University; Professor Angel Lopez, SA Pathology.

HDA Members Finalists in SA Science Awards 2009

Excellence in Research for Public Good

Professor Alastair MacLennan (University of Adelaide) improving birth outcomes for women, managing menopause and generating insight into the causes of cerebral palsy.

Professor Howard Morris (SA Pathology) developed nutritional strategies to reduce fractures. Dr John Greenwood AM (Royal Adelaide Hospital) Skin Engineering Laboratory helping burns victims.

Other SA Science Awards categories

Excellence in Research Commercialisation
Professor Andrea Gerson and Professor Stephen Grano from UniSA and COHDA Wireless.

School Science Educator of the Year

Ms Anita Trenwith, Salisbury High School.

Tertiary Science Educator of the Year

Dr Karin Barovich, University of Adelaide; Professor Derek Leinweber, University of Adelaide; Professor Holger Maier, University of Adelaide; Professor Joe Shapter, Flinders University

Community Science Educator of the Year

Professor Barry Brook, Northern Advanced Manufacturing Industry Group, Ms Rona Sakko.

The winners will be announced at the Awards Gala Dinner to be held at the Hilton Adelaide on Thursday 20 August. The South Australian Scientist of the Year will receive \$50,000, while winners from other categories will receive \$10,000 to use within their research project or program.

For further information visit www.scienceawards.sa.gov.au or email scienceawards@saugov.sa.gov.au.

HDA Oration on YouTube

This year HDA has broadcasted the 5th annual HDA Oration on YouTube. For more details on the Oration see page 2.

HDA's New Location

As of Friday 24 July, HDA has moved to a new office location at the Norwich Centre, 55 King William Road. Contact details (phone and email) remain the same.

An initiative of the University of Adelaide since 2004



HDA Partners



Women's & Children's Health Research Institute Inc.
Research for the future health of our children

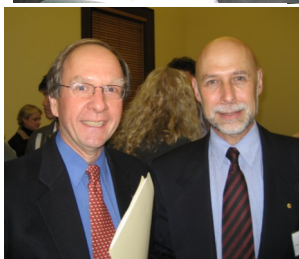


Government of South Australia
Department of Education and Children's Services

RECENT HDA EVENTS

HDA 5th annual Oration - Genetics & Disease in Children

On 11 June, HDA held its 5th annual Oration on 'Genetics and Disease in Children' presented by Professor Eric Haan AO. Over 100 people attended and it was held at the State Library of South Australia. Prof Haan is Head of the SA Clinical Genetics Services (SA Pathology, WCH) and Clinical Affiliate Professor within Discipline of Paediatrics at the University of Adelaide. Prof Haan was presented with the Healthy Development Adelaide Award for 2009. [The HDA Oration can be viewed on YouTube \(Pt1-Pt5\).](#)

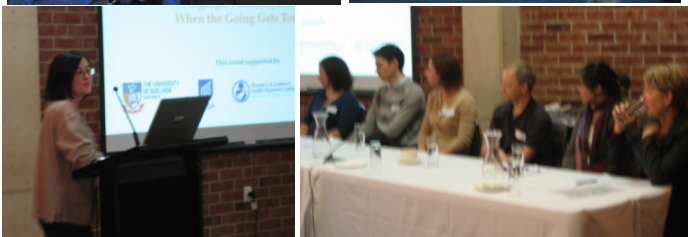


pic l to r: 1. HDA Oration. 2. HDA Co-Convenor, Prof Michael Sawyer with Prof Eric Haan. 3. Prof Haan with guests Prof Jeffrey Robinson and Prof Alastair MacLennan 4. The Hon Dr Basil Hetzel AC with Prof Haan. 5. HDA Oration attendees.

HDA Career Development Event - Forging a Research Career When the Going Gets Tough

On 9 July, HDA held its first Career Development Event for the year on 'Forging a Research Career When the Going Gets Tough!' with 150 students and early career researchers across all three state Universities attending. The event offered expert advice in career development and included presentations by academics and researchers who have successfully navigated research career challenges in their chosen field. An early career panel discussion then pursued issues raised by the presenters. Speakers included Dr Kirk Jensen (Discipline of Biochemistry, University of Adelaide) on *The challenges of a research career*; Prof Barbara Pocock (Director, Centre Work+Life, UniSA) on *Successful research while living in the work/life collision: what's possible? what needs to change?*; and Dr Alison Coates (Nutritional Physiology Research Centre, UniSA) on *Transitions in a research career*. Speakers joined an early career panel with Ms Wee-Ching Kong (Discipline of Obstetrics & Gynaecology, University of Adelaide), Dr Wendy Ingman (Research Centre for Reproductive Health, University of Adelaide) and Dr Michael Sorich (School of Pharmacy and Medical Sciences, UniSA).

The talks can be found at www.adelaide.edu.au/hda/news.



pic l to r: 1-2. Audience. 3. Chair, A/Prof Pat Buckley, UniSA. 4. Panel members.

HDA Thematic Evening - Getting it right, starting early: children's social development and wellbeing

On 23 July, HDA held its second Thematic Evening for the year on 'Getting it right, starting early: children's social development and wellbeing'. Over 200 people attended across varied sectors from university, government, health service and community. The event was chaired by HDA Co-Convenor, Prof Michael Sawyer (Head: Research & Evaluation Unit, CYWHS). Speakers included Ms Pam Linke (Parenting for Child and Family Health, CYWHS) on *Social development of children*; Dr Prue McEvoy (Department of Psychological Medicine, WCH / Disciplines of Psychiatry and Paediatrics, University of Adelaide) on *Enhancing children's social development and well-being*; Dr David Birbeck (Learning and Teaching Unit, UniSA) on *Bodies and minds under construction: development of body image perceptions of 5 and 6 year old children*; and Prof Tracey Wade (School of Psychology, Flinders University) on *Decreasing risk for the development of an eating disorder in children and adolescents*. [Talks at www.adelaide.edu.au/hda/news](http://www.adelaide.edu.au/hda/news).



pic l to r: 1. Audience. 2. Chair, Prof Michael Sawyer. 3. Panel members. 4. Audience.

UPCOMING HDA EVENTS IN AUGUST

HDA Bone Health Symposium

Tuesday 4 August, 10.00 - 3.30pm

Spectrum of research on bone development and bone health in Adelaide covering the areas from bone development, nutritional regulation, bone health, genetic and metabolic disorders, fractures and to repair. The event is FREE and open to researchers, clinicians, students, health care and government personnel with an interest in bone health and development.

HDA Career Development Event: Strategies to help you get the job you want

Tuesday 25 August, 9.45 - 1.00pm

Speakers from university, government, medical institute and the biotechnology industry sectors will present their perspectives on what each sector looks for in their employees and how you can make yourself more attractive to future employers. A panel discussion will focus on the questions and issues *you* wish to raise. This is a FREE event, which should prove useful for postgraduate students and early career researchers. All welcome.

RSVPs to both events essential, For full event details go to www.adelaide.edu.au/hda/events

✉ anne.jurisevic@adelaide.edu.au (EMAIL preferable)

SEMINAR

The Long-Term Child Health Effects of Prolonged and Exclusive Breastfeeding

The Long-Term Child Health Effects of Prolonged and Exclusive Breastfeeding by Professor Michael Kramer.

The Sansom Institute visiting research scholar seminar will be held on Monday 7 September at 1.00-2.00pm, UniSA, Playford Building on Frome Road, room P3-20.

Professor Michael Kramer MD is the Scientific Director of the Institute of Human Development, Child and Youth Health at the Canadian Institutes for Health Research (CIHR). He is also James McGill Professor in the Departments of Pediatrics and of Epidemiology, Biostatistics, and Occupational Health at the McGill University Faculty of Medicine in Montreal.

Professor Kramer is one of the world's leading perinatal epidemiologists and among his many outstanding scientific achievements, he is the lead investigator on the largest RCT ever conducted in the area of human lactation – the Promotion of Breastfeeding Intervention Trial (PROBIT) conducted in Belarus. Not only was PROBIT the first randomized trial of the WHO's Baby Friendly Hospital Initiative, but also having over 17,000 infant/mother pairs

provided an opportunity to assess the direct relationship between a breastfeeding promotion intervention and health and development in mothers and infants.

A selection of relevant PROBIT publications:

Michael S. Kramer, et al., Promotion of Breastfeeding Intervention Trial (PROBIT) A Randomized Trial in the Republic of Belarus. *JAMA*. 2001;285:413-420.

Kramer MS, et al., Effects of prolonged and exclusive breastfeeding on child height, weight, adiposity, and blood pressure at age 6.5 years: New evidence from a large randomized trial. *Am J Clin Nutr* 2007;86:1717-1721.

Kramer M, et al., Breastfeeding and child cognitive development. *Arch Gen Psychiatry* 2008;65:578-584.

*This event is held in conjunction with **Healthy Development Adelaide (HDA)** and Centre for Intergenerational Health.*

RSVPs by 2 September to sansominstitute@unisa.edu.au

LECTURE

WORK/LIFE BALANCE POLICIES IN A DECLINING ECONOMY

Work/Life Balance Policies in a Declining Economy: are they still win-win? by Professor Eileen Appelbaum, School of Management and Labor Relations, Director, Center for Women and Work, Rutgers University, USA.

Wednesday 12 August, 6.15pm start at the Allan Scott Auditorium, UniSA City West campus, Hawke Building, 50 North Terrace.

President Obama's White House Task Force on Working Families is aiming for the improvement of work-life balance. Learning about US federal and state policies and initiatives to improve work/life balance can also give us useful insights into what could be improved in Australia. This lecture will consider implications for working families and businesses, and the adjustments we might consider to encourage implementation now.

RSVPs essential to www.unisa.edu.au/hawkecentre or phone (08) 8302 0215.



Professor Barbara Comber is a key researcher in the Hawke Research Institute and the Centre for Studies in Literacy, Policy and Learning Cultures (LPLC), and Professor in the School of Education. Her research interests include literacy, teachers' work, social justice, critical literacies, popular culture, poverty and education, and school-based collaborative research.

Barbara is currently working on a number of research projects with teacher-researchers in different locales. These include:

- ◆ *New literacy demands in the middle years: Learning from design experiments* (an ARC funded project with Victoria Carrington from UniSA and Peter Freebody from University of Sydney).
- ◆ *Mandated literacy assessment and the reorganisation of teachers' work* (an ARC funded project with Phil Cormack and Rosie Kerin from UniSA, Brenton Doecke and Alex Kostogriz from Monash University, Dorothy Smith from the University of Victoria and Alison Griffith from York University).
- ◆ *The future SACE school to work literacy and numeracy project 2009* (A DECS funded project with Phil Cormack, Rob

Hattam, Marie Brennan, Rosie Kerin, Lyn Kerkham, Annmarie Reid, Jenny Barnett, Di Bills from UniSA and Lyn Wilkinson from Flinders University).

Previous projects include:

- ◆ *The future SACE school to work literacy 2008* (A DECS funded project with Phil Cormack, Rob Hattam, Marie Brennan, Rosie Kerin, Lyn Kerkham, Annmarie Reid, John Walsh and Lyn Wilkinson from Flinders University).
- ◆ *Urban renewal from the inside out: students and community involvement in re-designing and re-constructing school spaces in a poor neighbourhood* (A Myer funded project with Helen Nixon, Jackie Cook and Stephen Loo from UniSA).
- ◆ *Literacy and the environment: A situated study of multimeditated literacy, sustainability,*

local knowledges and educational change (An ARC funded project with Phil Cormack, Helen Nixon from UniSA, and Bill Green and JoAnne Reid from Charles Sturt University and Andrew Connolly from PETA).

Barbara has recently co-edited three books:

- ◆ *Turn-around pedagogies* (Comber & Kamler, 2005)
- ◆ *Look again: longitudinal studies of children's literacy learning* (Comber & Barnett, 2003)
- ◆ *Negotiating critical literacies in classrooms* (Comber & Simpson, 2001).

Professor Barbara Comber

☎ (08) 8302 4229

✉ barbara.comber@unisa.edu.au

EVENT

ARACY NATIONAL CONFERENCE 2-4 SEPTEMBER



**ARACY 2009 National Conference
Melbourne Convention & Exhibition Centre
2 - 4 September 2009**

The key aim of the ARACY Conference is to showcase preventive innovations that are improving the wellbeing of children and young people. Conference sessions will be relevant to those working in public and non-government sectors, across sectors, disciplines and professions. You can save up to \$100 on Conference registration as an ARACY member, and membership is free.

A message from Professor Fiona Stanley AC, ARACY Executive Director, ARACY Board Chair

"The ARACY Conference is tackling the big and complex issues affecting today's children and young people. We need input from all sectors and disciplines with an interest in improving outcomes for our young people to find sustainable solutions. If we don't respond to these challenges and start to really seriously address them across the whole nation, then we will be looking at our generation being the last generation where children live longer than their parents."

A message from The Hon. Alan Milburn MP, UK

"I am delighted to be speaking at the ARACY 2009 National Conference. This Conference is important because it will shine the spotlight on prevention strategies and how they can play a greater role in children's welfare, health, education and many other aspects of public policy. And the Conference is timely because the global financial crisis has sparked a worldwide debate about the future relationship between the state and the citizen, in making change happen."

For more information and online registration visit the website www.aracyconference.org.au or for any enquires contact The Meeting Planners, (02) 9265 0890 or email aracy2009@meetingplanners.com.au

HDA TRAVEL GRANT

RECIPIENT CONFERENCE REPORT 2009



Ms Hannah Brown
Discipline of Obstetrics and
Gynaecology,
University of Adelaide

Conference: ENDO 2009
Washington DC, USA 10-13
June.

During June, thanks to HDA's travel funds, I had the opportunity to attend the ENDO conference in Washington DC. The ENDO conference is the

world's largest endocrinology meeting and allows communication between basic scientists, clinical researchers and endocrinological clinicians.

The ENDO conference was an excellent opportunity to be exposed to the expansive endocrinology field, and to broaden my understanding of the area.

During the meeting, I presented a poster from research generated during my PhD, surrounding the hormonal development of the lymphatic vasculature within the ovary. During my poster session, I was able to discuss my work with a number of researchers that work in similar fields, that I had not, as of yet had the opportunity to

meet. This allowed me to workshop my ideas with specialist researchers and also to discuss post-doctoral opportunities within their laboratories.

Also, while at the ENDO meeting, I was lucky enough to receive an invitation to the ENDOcrine Training Day, a workshop directed at PhD students and early post-doc researchers. The training day allowed me to network with peers and also to gain inside knowledge into a number of areas including CV writing, interview skills, applying for Post-doc positions, and grant writing, just to name a few.

The Trainee Day was a highly valuable experience and would most definitely recommend it

to anyone interested in the ENDO conference.

Other highlights of the meeting included:

★ "The cholesterol feedback story" Plenary Lecture given by NOBEL PRIZE WINNERS Brown and Goldstein

★ Discussions with researchers: Theresa Woodruff

★ "A Mitochondrial etiology of diabetes and metabolic syndrome" Plenary Lecture given by Wallace, the most passionate mitochondrial expert I have ever seen!

Hannah is currently undertaking a postdoctoral position in France at the French National Institute for Agricultural Research (INRA).

celebrating 10 years

2009 Young Investigator Award

Excellence in science and communication

The Young Investigator Award 'Semi-finals' will be held on Friday 11 September 2009 in the Queen Victoria Lecture Theatre at the Women's and Children's Hospital, 11am - 3pm.

You are encouraged to attend to hear about innovative women's and children's health research being undertaken by some of the researchers of the future.

The Young Investigator Award, now in its tenth year, is one of South Australia's most prestigious prizes for early career researchers. The award highlights outstanding new science in the field of women's and children's health aimed at making a real impact on people's lives, and also the researchers' ability to communicate and 'sell' that science to the public.

The Award is an initiative of the Children, Youth and Women's Health Service and the Faculty of Health Sciences, University of Adelaide. The University of South Australia and Flinders University are also partners in the Award together with the Women's and Children's Health Research Institute, the Royal Institution of Aus-

tralia, Medvet Laboratories and the Women's and Children's Hospital Foundation.

If you would like to attend or have a group interested in attending the semi-finals then please contact:

Dr Andrea Averis:
Chair, YIA Committee
Children, Youth & Women's Health Service
Email: andrea.averis@health.sa.gov.au
Ph: 8161 7703

Ms Anne Jurisevic
YIA Committee Member
Healthy Development Adelaide (HDA)
Email: anne.jurisevic@adelaide.edu.au
Ph: 8303 8222

For more information on YIA go to www.cywhs.sa.gov.au/yia

Media Release 17 June 2009

The latest report on Australia's children, released by the Australian Institute of Health and Welfare, shows a continuing fall in child death rates - mostly due to fewer injury deaths - as well as declining asthma hospitalisations, teen births and smoking rates in older children.

'Combined with favourable trends in some risk and protective factors, such as immunisation coverage, these factors suggest that overall Australian children are doing well,' said Deanna Eldridge of the Institute's Children, Youth and Families Unit. 'Improvements in leukaemia survival rates are also encouraging, as is the fact that most children meet national physical activity guidelines and achieve national

minimum standards for reading and numeracy,' she said.

In terms of international comparisons however, Australia doesn't measure up to other OECD countries on infant and under 5 mortality rates, teenage birth rates and jobless families with children. And there are other areas that also need improvement.

According to the report, far too many children spend more than the recommended time of 2 hrs a day in front of a video screen (including television and computers), are overweight or obese, and are not eating recommended amounts of vegetables.

'Rising rates of severe disability, diabetes, and the disadvantages faced by Indigenous

children and children who live in remote areas are also a concern,' Ms Eldridge said. 'Aboriginal and Torres Strait Islander children are far more likely to be disadvantaged across a broad range of health and socioeconomic indicators,' she said.

Indigenous children are 2 to 3 times as likely as other Australian children to die, be of low birthweight and have dental decay. They are 5 times as likely to be born to teenage mothers; 8 to 9 times as likely to be in the child protection system; and 24 times as likely to be under juvenile justice supervision.

The report also shows that children living in remote areas had higher death rates, higher rates of neural tube defects,

lower rates of cancer survival, worse dental decay, and were less likely to meet minimum standards for reading and numeracy than their counterparts living in major cities.

A picture of Australia's children 2009 is the fourth in a series of AIHW national statistical reports on children aged 0-14 years. It provides the latest available information on how Australia's children are faring according to key national indicators of health, development and wellbeing. This includes reporting, for the first time, against the Children's Headline Indicators endorsed by Ministerial Councils for Health, Community Services and Disability, and Education.

For further information and the full report go to <http://aihw.gov.au/publications/index.cfm/title/10704>.

Centres for Clinical Research Excellence (CCRE)

The National Health and Medical Research Council has awarded grants of up to \$2.5 million each for six new CCREs and will be funded over 5 years.

Prof Peter Bartold, University of Adelaide, CCRE for Oral Health. The CCRE will focus on the prevention and treatment of oral diseases and disorders and their clinical consequences. Research will emphasis three areas of clinical care that are critical to the management of oral health, systemic health and general well-being:
1. primary prevention to prevent disease onset
2. diagnosis and risk prediction for oral conditions
3. clinical intervention.

Prof Ronald Grunstein, University of Sydney, CCRE in Interdisciplinary Sleep Health The CCRE aims to investigate biology of sleep, and to prevent

and to treat sleep disorders through a uniquely interdisciplinary approach. The centre will support world-class interventional research aimed to inform clinical practice and alter health policy.

Prof Tien Wong, Centre for Eye Research Australia, CCRE for Translational Clinical Research in Major Eye Diseases. The CCRE will fund world-leading, broad-based, clinical and translational research program in Melbourne and Sydney to tackle the four eye diseases that cause the majority of vision loss in Australia. Age-related macular degeneration, diabetic retinopathy, cataract and glaucoma.

Prof Lex Doyle, Murdoch Children's Research Institute (Melbourne), CCRE in Newborn Medicine. The CCRE will study adverse outcomes for the

brains and lungs of newborn babies. It will establish how often these occur in different types of babies (ranging from very premature babies through to those born on time), investigate the different causes, develop treatments to either prevent or treat the adverse outcomes, determine the long-term consequences into adulthood, and continually re-evaluate the effectiveness of the various treatment strategies designed to improve the health outcomes for newborn babies.

Prof Linda Worrall, University of Queensland, CCRE in Aphasia Rehabilitation. The CCRE uniquely combines two recent advances in rehabilitation, applies them to rehabilitation of acquired communication disorder (aphasia) and translates them into a clear pathway for clinical management of people with aphasia. This 'cell to

society' research program integrates a consumer's perspective into research in the relearning of lost skills after injury.

Prof John Kaldor, University of New South Wales, CCRE in Aboriginal Health: sexually transmitted and bloodborne viral infections. The CCRE will bring together the leading Australian institution dedicated to clinical research on sexually transmitted and bloodborne viral infections, and the peak organisation for Aboriginal Community Controlled Health Services. Working with nominated Aboriginal community-controlled health services, the centre will conduct innovative research that will identify new approaches to diagnosing and managing these infections, while at the same time developing improved clinical guidelines and research capacity within the sector.

Media release 3 July 2009

A University of Adelaide study has recommended that infertile couples seek advice about their lifestyle before embarking on IVF treatment or other assisted reproductive technology.

Gillian Homan, a fertility nurse specialist and researcher from the University's Robinson Institute, says that while most people link obesity, smoking, drugs and stress to infertility problems, many infertile couples fail to look at their own lifestyle as a possible obstacle to conceiving.

Ms Homan says couples experiencing infertility should understand the role their own lifestyle can play in helping them to achieve their goal of a healthy baby. These factors should be addressed in collaboration with the latest ART techniques.

The reproductive health researcher surveyed 20 new patients from Adelaide fertility clinic Repromed to gauge their perception of how lifestyle affects fertility.

While the evidence of the impact of weight on fertility is very strong, only half of the overweight women in this study considered their own weight to be a risk factor for infertility.

"Both obesity and low body weight can cause hormone imbalances and affect ovulation," Ms Homan says. "The time it takes to become pregnant is markedly increased if both partners are obese and the chance of delivering a healthy baby is also less."

Ms Homan says overweight women are also at risk of pregnancy complications such as miscarriage, gestational diabetes and raised blood pressure.

The other major finding to come out of the study reveals that many women trying to conceive are not following the current recommended guidelines for folic acid supplements.

"A daily supplement of folic acid pre-conceptually and in the first three months of pregnancy has been shown to decrease the risk of neural tube defects by up to 70%. Many women around the world are reportedly unaware of this fact," Ms Homan says.

The study underlines the importance of good preconception advice and support. "Any couples contemplating pregnancy would benefit from preconception advice to ensure their lifestyle choices are giving them the best chance of conceiving," she says.

Ms Homan's findings were published in the Australian Journal of Advanced Nursing this month. A follow up study to see whether individualised counselling and support leads to healthy lifestyle changes has shown some encouraging preliminary results, Ms Homan says.

Professor Robert Norman, Director of the Robinson Institute (*and HDA Co-Convenor*) is co-author on this study. *If you are interested in a copy of Ms Homan's paper email anne.jurisevic@adelaide.edu.au*

SYMPOSIUM

NOVITA CHILDREN'S SERVICES

DIVISION OF RESEARCH & INNOVATION RESEARCH SYMPOSIUM

Novita Children's Services would like to invite colleagues and interested members of the public to the symposium at Novita's Regency Park Centre on Wednesday 5 August, from 9-5pm. This will provide an opportunity to share findings from research studies conducted by Novita and research partners. The Inaugural Novita Research Oration will be presented by Prof Barbara Pocock on the challenges disability can create in maintaining life balance.

Morning session:

Mothers of children aged 6-12 years with autism or cerebral palsy: How much time is required for caregiving? **Prof Michael Sawyer**

Investigations into genetic and environmental causes of cerebral palsy. **Dr Catherine Gibson**

Training education staff: impact on communication of students using SGDs. **Dr Julie McMillan**

The Medical Device Partnering Program - translating research into practical outcomes. **Prof Karen Reynolds**

Theoretical dinner party: fresh perspective on AAC. **Darryl Sellwood**

Internet use by children and adolescents with physical disabilities: implications for social networking. **Dr Pammi Raghavendra**

Hypertonia in childhood - can we see the wood for the trees? **Dr James Rice**

Afternoon 'parallel' sessions:

Exploring the economics of good provision of AT. **Dr Lloyd Walker**
Assistive technology use in schools by children with physical disabilities. **Helen Parkyn**

Telecommunications access for people with disabilities: a changing world. **Rob Garrett**

Telecommunications research for people with disabilities and the elderly. **Toan Nguyen**

Enabling play and communication through the Bloorview Virtual Music Instrument. **Prue Shiosaki**

Changing shank vertical angle in AFO's: does tuning make a difference? **Susan Gibson**

Or

Promoting quality of life in children after acquired brain injury. **Dr Tim Connell**

Participation profiles of primary school children with and without physical disabilities and complex communication needs.

Abi Thirumankiam

Time use and activity participation in 10-15 year old children with and without complex communication needs. **Dr Pammi Raghavendra and Rachael Virgo**

Collaboration between health professionals and teachers. **Sarah Kennedy**

Factors influencing postural management for children with cerebral palsy in special schools. **Dr Carol Maher**

Social Interaction in a boys' group for muscular dystrophy: a program evaluation. **Helen Parkyn**

The full program of speakers and details for the day can be found at www.novita.org.au/research.

RSVP to 8243 8261 or research@novita.org.au.

Health, Disability Lifespan Development (HDL), a research grouping in the School of Psychology, University of Adelaide <http://www.psychology.adelaide.edu.au/units/health/> presents..The OPAL Project: Obesity Prevention and Lifestyle by Mark Williams, State Manager, OPAL Project, SA Health.

In this presentation Mark will outline the OPAL program, its implementation in SA and the links to an international network for promoting healthy weight. Launched in South Australia in March 2009, the new five-year, \$22.3m *Obesity Prevention and Lifestyle* (OPAL) program is aimed at promoting good health in our community by starting at the beginning – with our children.

In the first year, six councils are committed to the OPAL program: Playford, Mount Gambier, Salisbury, Marion, Onkaparinga and Port Augusta. As a result, the program could reach up to 90,000 South Australian children and their families.

OPAL will provide a basis for government and local community groups to work together to develop community-wide solutions to health issues. Federal and state funding will support the initiative, along with local contributions.

OPAL is based on the French EPODE program (*Ensemble Prévenons l'Obésité des Enfants - Together Let's Prevent Childhood Obesity*).

Wednesday 12 August
12.15 – 2.00 pm
Room 526/527 Hughes Building
The University of Adelaide (north terrace campus)

Sandwiches and coffee 1.30 - 2pm
RSVP to susan.gravier@adelaide.edu.au or ph 8303 3452.

FORUM

GENDER AND POWER AS SOCIAL DETERMINANTS OF HEALTH & WELLBEING

Gender and Power as Social Determinants of Health & Well-being: Ways that service systems reflect and reproduce gender and power inequities.

Chaired by A/Professor Eileen Willis, Head, Social Health Sciences. To be held on 11 August, 12-2pm, Breakout Rooms 1.23, 1.27 & 1.28, Health Sciences Building, Flinders University.

The World Health Organisation Commission on Social Determinants of Health identified gender and power inequities, pervasive in all societies, as fundamental determinants of health and wellbeing. Families@Flinders researchers and women's health & safety service managers/practitioners will outline their research interests and critical perspectives to encourage in-depth discussion.

The social determinants of health - where do gender and power fit? A/Professor Colin MacDougall, *Discipline of Public Health and Southgate Institute for Health, Society and Equity*.

Gender and Power as Determinants of Child and Family Well-being. Dr Miranda Roe & Dr Anne Morris, *Families@Flinders Research Network*.

Overviews of research by other F@F members highlighting gender and power issues in services.

Ageing Sexualities: policy and practice possibilities - Dr Judith Peppard, *School of Education*.

Miscarriage - Dr Catherine Kevin, *Department of History*.

Domestic violence related deaths - Ms Catherine Mackenzie, *PhD Candidate, Southgate Institute for Health, Society and Equity*.

Maternity care - Dr Lareen Newman, *Australian Health Inequities Program*.

Responses from the perspective of women's health and safety service provision

Ms Jen McKenzie, *Manager, Women's Health and Safety, Central Northern Adelaide Health Service, Ambulatory and Primary Health Care Services*.

Ms Celia Karpfen, *Manager, Southern Primary Health - Southern Women's, Southern Adelaide Health Services*.

Places limited. Please RSVP by 5 August to simeon.sharo@flinders.edu.au or ph (08) 7221 8411.

LEADING PAEDIATRIC PRIZE

THE HON DR BASIL HETZEL AC



Inaugural Chair and Patron of UniSA's Hawke Centre and former UniSA Chancellor, Dr Basil Hetzel, has been awarded international honours for his paediatric work. Dr Hetzel is the 2009 recipient of the Pollin Prize for outstanding achievement in paediatric research, the only international award for paediatrics.

The Hawke Centre Patron was recognised for his pioneering work in Papua New Guinea from 1964-1972 that led to understanding of the effects of iodine deficiency on brain development and the importance of incorporating iodized salt in the diet to prevent brain damage in newborns.

He played a key role in establishing and then leading the International Council for the Control of Iodine Deficiency Disorders (ICCIDD) which has since grown into a multidisciplinary global network of 700 professionals from more than 100 countries. Dr Hetzel's work has prevented brain damage in millions of children worldwide. The prestigious Pollin Prize was established in 2002 by US philanthropists Abe and Irene Pollin and is funded by the Linda and Kenneth Pollin Foundation.

Healthy Development Adelaide (HDA) will be co-hosting 'Refugee Trauma Across the Lifespan' Symposium in partnership with the University of Adelaide and the Peace-keeping, Defence and Security Research Cluster at the University of South Australia.

To book in your seat and early registration email anne.jurisevic@adelaide.edu.au (email preferable). For any other enquiries phone Anne on (08) 8303 8222. The program flyer will be out in September.



Refugee Trauma Across the Lifespan.

Children and Adolescent Wellbeing
and the Implications for Adult Health.



THE UNIVERSITY
OF ADELAIDE
AUSTRALIA

Thursday 29 October 2009. 9.00am – 5.00pm.

National Wine Centre
of Australia

Hickinbotham Hall
Corner of Botanic
and Hackney Roads

Keynote Addresses from

Mr Hieu Van Le

Lieutenant Governor of
South Australia
Chairman, South Australian
Multicultural and Ethnic
Affairs Commission

Dr Ida Kaplan

Manager, Client Services
Victorian Foundation for
Survivors of Torture

Refugee trauma across the lifespan is recognised worldwide as a significant mental health issue in our times. Refugee trauma can be across many cultures and there is much diversity with regard to idioms of distress causing a change in behaviour and mental well being. Refugee trauma is included in Australia's National Mental Health Plan, yet the extent to which it is recognised, researched or discussed in an interdisciplinary context is perhaps less than we would expect, even in places where there resides a diverse population of people from refugee background.

This one day event will consider the critical themes, debates and research possibilities related to refugee trauma for young people, with implications for later life, using a range of illustrative case study, clinical practice and research presentations. The event is FREE and will be open to researchers, clinicians, students, health care and government personnel with an interest in refugee child and adolescent wellbeing.

For further information please contact

e: anne.jurisevic@adelaide.edu.au

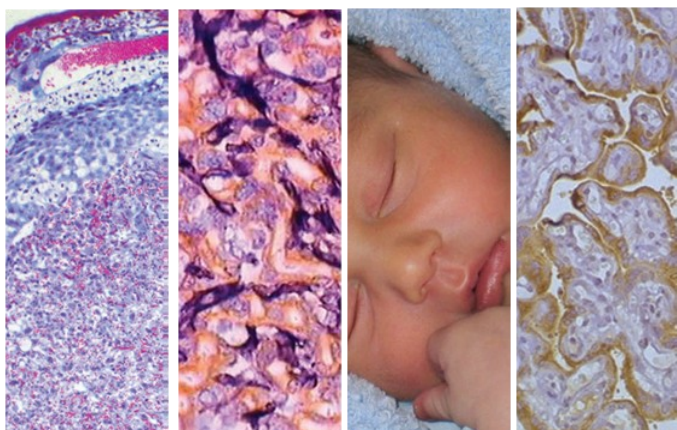
t: (08) 8303 8222

This is a joint event held by



SYMPOSIA

Placenta: Key to Pregnancy Success



Placenta Key to Pregnancy Success
 International Federation of Placenta Associations (IFPA)
 6-9 October 2009
 Adelaide Convention Centre

A symposia on the placenta and fetal programming, infant sex, predicting adverse pregnancy outcomes, reproductive immunology, trophoblast endometrial interactions, epigenetics, genes and placenta.

Registrations and abstracts for posters still being accepted.

www.ifpaconference.org/2009

Conference Chair: A/Prof Claire Roberts email: claire.roberts@adelaide.edu.au

AUSTRALIAN SOCIETY FOR MEDICAL RESEARCH

PROFESSIONAL DEVELOPMENT DAY

The Australian Society for Medical Research (ASMR) Professional Development Day will be held in Melbourne on the 19 August at Melbourne Rydges Hotel.

“How to deliver the messages you want to politicians and funding bodies”

Session 1: Science Meets Politics and the Community

This session will focus on interaction with the political machinery and how to get the most out of it as a medical researcher – with input from high profile past politicians, bureaucrats, advisers and a perspective from a patient advocate. The session will involve both presentations and interactive activities. Participants on the day include Amanda Caples (Director Biotechnology and Director Science & Technology Programs, DIIRD, Victorian Government), a patient advocate from the Juvenile Diabetes Research Foundation, Xavier Csar (Executive Director, Economic Projects Investment and Major Projects, DIIRD, Victorian Government and ex-adviser to John Brumby). The keynote speaker will be an ex-politician (and/or Senior Minister) with a wealth of experience in helping health and medical researchers obtain real outcomes in terms of funding and awareness.

Session 2 : Grantsmanship workshop

The second session of the day will be a highly interactive Grantsmanship workshop utilising a number of high profile Australian researchers focusing on the journey of a project grant from beginning to end and on how best to obtain a fellowship.

Confirmed participants are as follows:

Prof Steve Wesselingh (Dean, Faculty of Medicine, Nursing and Health Sciences, Monash University)

A/Prof Bronwyn Kingwell (Executive Director Science Policy, Baker IDI)

Prof Melissa Wake (Director, Centre for Community Child Health, Royal Children's Hospital, Melbourne)

Prof Andreas Strasser (Walter and Eliza Hall Institute of Medical Research)

Registration and information via www.asmr.org.au/breakingnews

CONFERENCE

CHILDREN OF PARENTS WITH A MENTAL ILLNESS (COPMI)



The 6th National Child & Adolescent Mental Health (CAMH) Conference will be held jointly with the inaugural World Children of Parents with a Mental Illness (COPMI) Conference in October 2009.

Hosted by the Australian Infant Child Adolescent and Family Mental Health Association (AICAFMHA), this will be a major occasion on the Australian mental health calendar, with the conference theme, “Together” encouraging us all to look at the ways in which we work with and support children and families where mental health is an issue. The inaugural World COPMI Conference and the 6th National CAMH Conference will be held over 26 and 27 October 2009 with Workshops for both events being held on the 28th October 2009.

These joint events constitute a unique opportunity for professionals and consumers from the many fields associated with mental health to share ideas, develop networks and participate in knowledge enhancement. For more information go to <http://sapmea.asn.au/conventions/camh/index.html>

Media Release 8 July 2009

NHMRC funding of \$7 million was given to 41 Australian medical research projects that will help ensure the Australian Government's response to the evolving threat of H1N1 is based on the most up-to-date information available. Projects cover research from the lab to bedside, from patients to community health, with emphasis on rapid results to benefit Australians and the rest of the world. Researches will report their findings at a symposium in December 2009 attended by the Chief Medical Officers of Australia and each state and territory, as well as public health experts.

Dr Lisa Marie Alleva - *Trialling agents that could limit influenza disease and improve resistance to secondary infections* - Australian National University (ANU) ACT

A/Prof Paul Kelly - *Establishing rapid alert system for severe respiratory illness in adults: FluCAN surveillance system* - ANU ACT

Dr Kamalini Lokuge - *Surveillance for H1N1 influenza and evaluation of impact of control measures in prisoner populations* - ANU ACT

A/Prof Leslee Roberts - *Transmission dynamics of H1N1 variant in households and schools* - ANU ACT

Prof Niels Becker - *Improving response by monitoring incidence and assessing seasonality and specific interventions* - ANU, ACT

Prof Chris Del Mar - *Physical interventions to interrupt or reduce spread of respiratory viruses: updated review* - Bond Uni QLD

Dr Tony Velkov - *The structure and receptor binding properties of 2009 swine influenza pandemic hemagglutinin* - Deakin Uni VIC

Dr Jennifer McKimm - *Breshkin impact of resistance mutations on sensitivity of A(H1N1) swine flu neuraminidase (NA) to current and novel NA-inhibitors* - CSIRO VIC

Prof David Gordon - *Development of recombinant GPI-anchored haemagglutinin of swine influenza H1N1 for serological and immunological studies* - Flinders University SA

Prof Richard Speare - *Feasible containment strategies for swine influenza H1N1 in rural and remote Indigenous communities* - James Cook University QLD

Prof Suzanne Crowe - *Immune responses to 2009 H1N1 to assist public health response* - Burnet Institute VIC

A/Prof Rosemary Ffrench - *A centralised facility for immunological monitoring of human H1N1 immunity post infection or vaccination* - Burnet Institute VIC

A/Prof Margaret Hellard - *The epidemiology, transmission and impact of new influenza A (H1N1) on the Victorian community in 2009* - Burnet Institute VIC

A/Prof Heath Kelly - *Estimating the protective effect of seasonal influenza vaccine against medically attended ILI due to novel influenza A (H1N1)* - Victorian Infectious Diseases Reference Lab VIC

Mr Aeron Hurt - *Role of NA inhibitor treatment and prophylaxis in reducing disease severity and spread of A(H1N1) swine origin virus* - WHO Collaborating Centre for Reference and Research on Influenza VIC

Dr Caroline Marshall - *Do frontline healthcare workers have increased risk of contracting influenza H1N1? A prevalence and risk factor study* - The University of Melbourne VIC

A/Prof Heath Kelly - *Laboratory confirmed novel influenza A(H1N1) and seasonal influenza, Victoria 2009: comparison of clinical spectrum of disease* - Victorian Infectious Diseases Reference Lab VIC

Prof Anthony Harris - *Impact of an influenza epidemic on the Australian economy* - Monash University VIC

Prof Paul Herzog - *Development of a signature for early responses to influenza strains that determine /correlate with severity of infection, vaccine response and changes in virulence* - Monash University VIC

Prof Gerard FitzGerald - *Emergency Department impact and patient profile of H1N1 Influenza 09 outbreak in Australia: A national survey* - Queensland University of Technology QLD

Prof Michael Parker - *Swine influenza: Molecular basis of potential resistance to neuraminidase inhibitors* - St. Vincent's Institute of Medical Research VIC

Dr Helen Marshall - *Evaluating community understanding of and participation in strategies to prevent the spread of H1N1* - University of Adelaide SA

Prof Warwick Blood - *Public and media understandings of A/H1N1 within a risk communication environment* - University of Canberra ACT

Prof Anne Kavanagh - *H1N1-related Victorian school closures: quarantine compliance and impact of parents' precarious employment* - University of Melbourne VIC

Dr Katherine Kedzierska - *Understanding the extent of cross-reactive T cell immunity between H1N1 09 and seasonal influenza strains* - University of Melbourne VIC

Prof Terry Nolan - *Immunity to novel H1N1 influenza prior to and after immunization with seasonal TIV in children aged 6 months to 9 years* - University of Melbourne VIC

Dr John Stambas - *Identification of determinants associated with pathogenicity of Swine-Origin 2009 A (H1N1) influenza virus* - University of Melbourne VIC

Dr James McCaw - *Determining optimal strategies for use of antiviral agents in the 2009/10 A(H1N1) swl influenza epidemic in Australia* - University of Melbourne VIC

Prof David Jackson - *Is Pam2Cys the new anti-viral against influenza A virus?* - University of Melbourne VIC

A/Prof Joseph Torresi - *Swine influenza: epidemiology and virology of the Victorian epidemic* - University of Melbourne VIC

Prof John Mathews - *Models for influenza virulence to explain changes over time & place, including differences between 1918-19 and 2009* - University of Melbourne VIC

Dr Lorena Brown - *Ability of H1N1/09 and seasonal influenza vaccines to reduce symptoms and halt spread of H1N1/09 infection in ferrets* - University of Melbourne VIC

A/Prof Louis Irving - *Utility of POC predictive blood biomarkers in triage and management of high risk populations* - University of Melbourne VIC

Dr James Wood - *Optimal use of vaccine to mitigate second wave of H1N1 2009 influenza in Australia* - Uni of New South Wales NSW

Prof William Rawlinson - *Novel swine-origin influenza H1N1 09 Quality Assurance* - University of New South Wales NSW

Prof Raina MacIntyre - *Efficacy of face masks against H1N1 swine influenza* - University of New South Wales NSW

Prof David Durrheim - *Australian public's H1N1 knowledge, risk perception, containment measure adoption and willingness to be vaccinated* - University of Newcastle NSW

Prof Mark Kendall - *Nanopatch immunisation against pandemic Novel A (H1N1) influenza virus 09: potent immunity at a reduced dose* - The University of Queensland QLD

Dr Bin Wang - *Real-time and quantitative monitoring of emergence of oseltamivir resistance during current influenza pandemic* - University of Sydney NSW

Prof Elizabeth Elliott - *Characterisation of H1N1 Influenza in hospitalised children using paediatric active enhanced diseases surveillance* - University of Sydney NSW

Prof Robert Booy - *Unblinded randomized study of influenza A/H1N1 resistance to oseltamivir and zanamivir* - National Centre for Immunisation Research & Surveillance of Vaccine Preventable Diseases NSW