



THE UNIVERSITY
of ADELAIDE

A photograph of three students sitting and talking. A woman in the center is smiling, holding a grey reusable coffee cup. To her right, a man is also smiling and holding a green reusable coffee cup. On the left, the profile of another student is visible, also holding a cup. The background is a vibrant green with a geometric, low-poly pattern.

Campus Sustainability Plan

Foreword

Managing and responding to climate change is one of the most important challenges of our time.

As individuals, communities or organisations, we all have a responsibility to take sustainable action to ensure our world's resources, environment and climate can adequately support the needs of future generations. Effective action will be based on evidence and will need to adapt over time as new knowledge and technologies emerge.

As a world-leading research intensive higher education institution, the University of Adelaide understands the positive impact of new knowledge and innovation in all its forms. Further, as a publicly funded organisation conducting research in sustainability and environmental science, the community justifiably expects the University to lead by example. Our staff, students and graduates all have a role to play in the transformation of our campuses.

The Campus Sustainability Plan outlines the University of Adelaide's commitment over the next four years to transforming built environments and mobilising our community to reduce emissions and improve operational practices. The Plan revolves around three central themes: collaborate, inspire and transform to drive our low-carbon transition, recognising it will take effort on all three fronts over time to achieve our ambitions.

The Plan is a vision for sustainability on campus with strategies that link investment in facilities with staff and student engagement. The delivery of these strategies also support economic efficiencies and enhance the campus experience. The Plan contains the University's first coordinated suite of emission reduction projects that will begin the transition of our institution towards low carbon operations. As the founding partner of the State Government's Carbon Neutral Adelaide strategy, these projects demonstrate the University's commitment to South Australia's goal of achieving net zero emissions by 2050.

With foresight, commitment and collaboration, the University will make a contribution to the long term sustainability of our State. On behalf of the University of Adelaide, I'm honoured to present the Campus Sustainability Plan.



Bruce Lines
Chief Operating Officer

Contents

- 3 Foreword
- 4 Our journey
- 8 Our vision
- 10 Our strategy
- 14 Carbon reduction
- 18 Water efficiency
- 22 Engagement activities
- 26 Training and skills
- 30 Investment and purchasing
- 34 Governance, implementation and reporting
- 35 Glossary

Our journey

The University of Adelaide's sustainability journey began in 2006 with the establishment of a University Sustainability Board, followed by the creation of the 'Ecoversity' program in 2008.

The Ecoversity program's focus was to engage staff and students in a range of initiatives with an emphasis on developing a campus culture of applied sustainable practices. Student engagement has been the biggest success of the program with events and activities well subscribed. The program has also established strong relationships within the higher education sector, State and Local Government agencies and regulators. A number of sustainability projects have been implemented to decrease energy consumption, increase recycling rates and improve water efficiency.

The student body have been keenly involved in Ecoversity initiatives over the years, including recycling campaigns, installation of water refill and bike maintenance stations, cycling and Re-Use events, and publication of sustainable living guides. Staff in each Faculty have championed sustainability in a variety of ways with support from the Ecoversity program, including through participation in switch-off campaigns, night audits, water efficiency in laboratories, the Kick ya Bin recycling program, electronic and battery recycling.

The Green Project Fund has been a successful initiative for staff and students to deliver their own sustainability projects on campus. Green Projects have included composting technology at the Roseworthy Campus, development of a mobile App to engage students in recycling education, lighting upgrades, installation of edible gardens at North Terrace and Waite, sustainability campaigns for Technology Services and the Library, a textbook reuse program and the development of a sustainable event guide for students. The University has embraced the OzHarvest food rescue charity by hosting annual community events on the Goodman Lawns to promote the importance of reducing food waste. The University is also proud of its Fair Trade accreditation received in 2012.

Key achievements include:

- > 18% reduction in emissions per person on campus (2010-2014)
- > 31% reduction in potable water consumption at the North Terrace campus since 2012
- > 10% reduction in waste to landfill at the Roseworthy campus since 2012
- > 176% increase in recycling across all University campuses since 2011
- > 82% of students use low-carbon transport methods to travel to campus

The University's Strategic Plan 2013-2023, the Beacon of Enlightenment, took steps to embrace the State's innovation agenda and set out ambitious goals to increase collaborative research into sustainability issues. Subsequent Operational Plans encouraged sustainable practices and the development of new reduction targets, prompting the university community to respond with enthusiasm.

Right across the institution, commitment to a sustainable future is recognised and supported. Our journey will involve actively reducing emissions over time and engaging staff and students in collective action and common purpose to demonstrate best practice sustainability on campus.



Students at the North Terrace Campus using water refill stations.

Our journey

2006

- University Sustainability Board established

2008

- Environmental Project Officer position created
- Environmental Compliance Review

2009

- Sustainability Assessments
- Ecoversity program created
- National Ride to Work Day Award
- E-recycling Program established
- North Terrace Waste and Recycling Review

2010

- Public place recycling stations installed
- Carbon management and reporting tool implemented
- Waite and Roseworthy Waste and Recycling Review
- University Waste and Recycling Management Plan developed
- Ecorider Program
- Student Internship Program established
- Inkarni Wardli built – 6 Star Green Star
- Badger laboratory water efficiency upgrade

2011

- TravelSmart staff survey
- ACTS Green Gown Awards for student campaigns and initiatives
- EPA Sustainability License awarded
- Founding Partner of OzHarvest SA
- Energy Management Plan developed

2012

- Green Project Fund established
- Kick ya Bin (office recycling) pilot
- Inaugural Re-use event
- Fair Trade Accreditation
- Campus Walking and Cycling Guides developed
- Waite Integrated Water Management Plan developed
- Hosted the ACTS Conference
- Sustainable transport campaign
- 30kW Solar PV installed at Equine Centre

2013

- Sustainability review of The Village
- Kick ya Bin at North Terrace
- City Switch Program
- Adelaide Car Pool Program
- Highly commended ACTS Green Gown Award for student recycling initiative
- Inaugural Fair Trade Fortnight events
- Water Re-fill Stations installed at all campuses
- 'Feeding 5000' community event with OzHarvest SA

2014

- 30kW Solar PV installed at Vet School
- Hub Central Edible Garden opened
- Inaugural Green Steps @ Adelaide Training Program
- Furniture Re-use Pilot Program
- E-recycling community event with Apple
- Ecoleader Program at North Terrace
- Energy Efficiency on Campus campaign
- Inaugural 'Think.Eat.Save' community event with OzHarvest SA
- Strategy for a bike friendly campus
- Badger laboratory energy efficiency upgrade

2015

- 30kW Solar PV installed at Equine Centre
- Waite Community Garden opened
- Kick ya Bin at Waite
- Ecoleader Program at Waite
- Bike maintenance stations installed at North Terrace
- Hosted the Fairly Educated Conference

2016

- Founding Partner of Carbon Neutral Adelaide
- Campus Sustainability Plan developed
- Ecoversity Award scholarship established
- Public place organic recycling bins installed at North Terrace
- Battery and mobile phone recycling stations installed at all campuses
- Cycling Skills Program established
- Green Lab Review
- Davies building energy efficiency upgrade in collaboration with School of Agriculture, Food & Wine
- Green at Heart - World Environment Day Campaign
- SuperSort waste education gamification pilot

Our vision

As a global leader in higher education, the University of Adelaide recognises that climate change is one of the greatest tests of our time.

Our thriving campus communities, full of the brightest minds, are working in many ways to solve the multifaceted challenges that climate change brings to our world and way of life. The University's Campus Sustainability Plan demonstrates how economic, social and environmental goals can be achieved together. The Plan provides a vision for sustainable action on campus with strategies that link investment in campus facilities with staff and student engagement, to re-imagine resources, generate economic opportunities and enhance the university experience.

The Plan contains the University's first coordinated suite of emission reduction projects that will begin the transition of our institution towards low carbon operations.

The Intergovernmental Panel on Climate Change predicts a hotter and drier climate with more extreme weather events. These changing weather patterns will place greater demand on our hydraulic, electrical and mechanical infrastructure and will see campus buildings working harder, for longer. The next five years is a critical period for adaption to an increasingly unstable climate. As long-term owner-occupiers of three campuses, the University is in a good position to realise the full benefits of investment in new technologies and efficiencies over the life of each built asset. Campus infrastructure can also play an important role in the translation of research and teaching, further enhancing the value of investment.

Targets and strategies outlined in the Plan were derived in consultation with staff and students and are supported by recommendations originating from physical audits of buildings and grounds. Total investment in the plan is estimated at \$14.4M, including \$12.8M for low carbon technologies such as renewable energy.

FAST FACTS

The University of Adelaide was established in 1874 and is a member of the prestigious Group of Eight – a coalition of Australia's foremost research intensive universities.

The University constitutes a vibrant and diverse community with over 25,000 students and over 3,500 members of staff across three campuses.

The Waite campus is located seven kilometers from the Adelaide CBD and is home to the internationally renowned Waite Research Institute. The campus is the pre-eminent plant and agricultural science research site in the southern hemisphere, also specialising in viticulture, oenology, food science and nutrition.

The North Terrace campus is located in the heart of Adelaide and is the University's main campus. The historic sandstone buildings form a key part of the city's cultural promenade, and are surrounded by the Art Gallery, Museum and State Library. These buildings are interspersed with state-of-the-art teaching, learning and research facilities, manicured landscapes and sports grounds.

Roseworthy campus is located 50 kilometers north of the city. The campus boasts South Australia's only veterinary school and is renowned for excellence in dryland agriculture and animal production.

The University has five academic faculties and four administrative divisions which focus on discovering new knowledge, pursuing innovation and preparing leaders of tomorrow who are independent, creative thinkers with an international perspective.

TARGETS

- 15% reduction in energy intensity (GJ/GFA m²) by 2020 (2014 baseline)
- 2MW of renewable energy installed by 2020
- 50% landfill diversion rate by 2020
- 40% reduction in potable water intensity (kL/GFA m²) by 2020 (2014 baseline)
- 20% annual increase in participation in Ecoversity engagement activities (2015 baseline)
- 20% annual increase in participation in Ecoversity training and skill-based programs (2015 baseline)
- 10% annual increase in the procurement of 'sustainable and ethically sourced' office supplies (2015 baseline)



SUSTAINABILITY
PROJECTS SPAN
1,640
HECTARES
OF CAMPUS
BUILDINGS AND GROUNDS

Our strategy

The Campus Sustainability Plan revolves around three central themes of campus transformation, collaboration and inspiration to drive our low-carbon transition. It will take effort on all three fronts over time to achieve this vision.

Campus transformation: With a diverse range of building stock the University faces a number of infrastructure challenges as research activity grows and teaching practices innovate to better support student needs and technological expectations. These challenges also contribute to growing emissions as operating hours extend, demand for plug-in devices increase and as buildings are intensified to accommodate greater numbers of staff and students. Investment in low-carbon technologies such as on-campus energy generation and demand management, improved water efficiency and recycling facilities will provide long-term economic benefits, particularly as utility and service rates continue to increase. Through the Campus Sustainability Plan, our infrastructure will begin a low carbon transformation.

Collaboration: By collaborating with and harnessing the influence of leaders within faculties, schools and departments, the University can implement operational efficiencies and improved practices that demonstrate the University's sustainability values. Leaders will be supported with funding for pilot projects, information and resources including campus level reporting to track sustainability performance and celebrate successes. Collaborating with local leaders and partners that share our values is key to the success of the Plan, and individual effort will be recognised and rewarded.

Inspiration: Dissemination of shared sustainability goals, resources, information and campaigns will help mobilise collective action of our campus community to make small changes, every day. The student body will be motivated with sustainability skills and training, and funding opportunities for early career development. The Ecoversity program will inspire a new emphasis on the value of resources, wasting less, utilising new technologies and adopting sustainable practices.

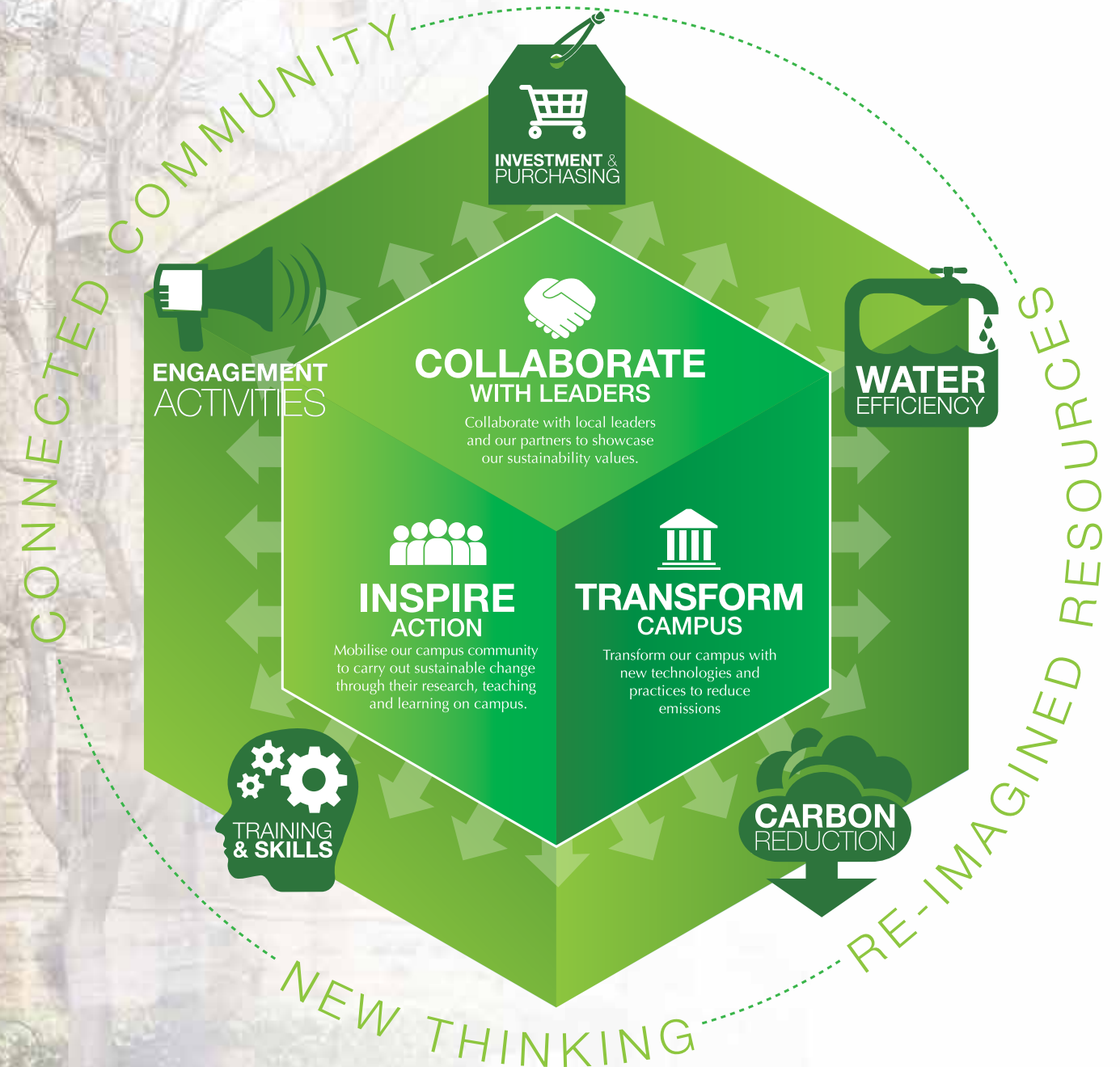
Our strategy has been designed to support the translation of new thinking from our brightest minds, to campus buildings and grounds. By placing greater value on our natural resources, and engaging staff and students in transparent target tracking and real-world learning opportunities, our community will become better connected under a shared vision of campus sustainability.

This strategy will be achieved through the delivery of thirty one sustainability initiatives, grouped into five streams of work:






- > carbon reduction
- > water efficiency
- > engagement activities
- > training and skills
- > investment and purchasing.

Implementation of each sustainability initiative will encompass the three central themes of collaboration, inspiration and transformation above, to ensure a coordinated approach of the greatest value.

OUR PLAN WILL SAVE
5,168t
CO₂e PER YEAR



					
TARGET	15% reduction in energy intensity (GJ/GFA m2) by 2020 (2014 baseline) 2MW of renewable energy installed by 2020 50% landfill diversion rate by 2020	40% reduction in potable water intensity (kL/ GFA m2) by 2020 (2014 baseline)	20% annual increase in participation in Ecoversity engagement activities (2015 baseline)	20% annual increase in participation in Ecoversity training and skill-based programs (2015 baseline)	10% annual increase in procurement of sustainable and ethically sourced office supplies on campus (2015 baseline)
STRATEGIES	Sustainable design and construction standards Building performance rating system Renewable energy Energy efficiency retrofits Kick ya Bin program Public place recycling Specialised recycling solutions Flight emission reduction	Water efficiency retrofits Campus water management plans Rainwater capture and reuse	Resource monitoring Ecoversity building user guides Ecoversity excellence - staff and student recognition Waste education Ecoversity student living campaigns Campus sustainability reporting Ecoversity events Green Project Fund Environmental compliance and reporting	Ecoversity Award - student professional development Ecoleader program Sustainability skills and training Ecoversity induction Cycling skills and education Ecoversity student position Internships for sustainability careers	Sustainable investment Sustainable procurement practices Sustainable events Fair trade

Carbon reduction

ACTION

9,208
SOLAR PANELS
ON CAMPUS

Vet School Solar PV system - Roseworthy Campus

TARGETS

- 15% reduction in energy intensity (GJ/GFA m2) by 2020 (2014 baseline)
- 2MW of renewable energy installed by 2020
- 50% landfill diversion rate by 2020

Investing in low carbon technologies for campus buildings will help Schools and Faculties reduce operational expenses long-term.

Like many large institutions, the University's carbon inventory encompasses a range of emission sources. Currently the University captures information on scope 1 and 2 emissions for reporting purposes, with some scope 3 emission sources (flights and waste) accounted for. Purchased electricity and flight emissions make up a significant portion of the University's emission inventory.

The University reduced emissions by 18% per person between 2010 and 2014, occurring due to a reduction in energy emissions¹. This is a great achievement considering that during this time student numbers increased by 13% and research income grew by 20%. Part of this reduction can also be attributed to increased recycling rates at all campuses due to the introduction of the 'Kick ya Bin' program.

Since 2014, the University's carbon emissions have increased due to growth in air travel and new energy requirements related to greater operating hours, a rise in energy intensity to accommodate growing numbers of staff and students, and new teaching and research facilities such as the Adelaide Health and Medical Sciences building.

Eight carbon reduction strategies will aim to reduce the University's emission portfolio by approximately 5,168 tonnes of CO₂e annually. Many of these strategies will be implemented at the North Terrace Campus, contributing to the Carbon Neutral Adelaide initiative. Strategies include electricity demand management, on-campus energy generation, improved waste management, and investigation of initiatives to reduce and offset flights.

ACHIEVEMENT

18%
DECREASE IN
CO₂e PER
PERSON
ON CAMPUS

CARBON EMISSIONS CO₂e PROFILE (2015)

57.48%

PURCHASED ELECTRICITY

33.56%

FLIGHTS

2.69%

SYNTHETIC GASES

2.57%

NATURAL GAS

2.38%

WASTE

1.05%

TRANSPORT FUEL

0.28%

OTHER STATIONARY ENERGY

¹(FTE and EFTSL)

Sustainable design and construction of built environments

Ensure all new buildings and refurbishments consider environmental and financial lifecycles. All new projects will follow a set of building design and construction guidelines that specify sustainability considerations including best practice energy, waste and water efficiency.

Building performance rating system

Progressively assess, rate and promote building performance to identify opportunities, measure satisfaction and develop a competitive spirit to help drive sustainable behaviour.

Renewable energy

Install 2MW of solar PV technology across all campuses, including a ground mounted solar farm at the Roseworthy campus to reduce electricity consumption during peak demand and lower carbon emissions.

Energy efficiency retrofits

Refurbish campus buildings with more efficient mechanical and electrical systems (including air-conditioning, lights and sensors) considering asset lifecycle and potential savings from early replacement.

Kick ya Bin program

Expand the University's recycling program, 'Kick ya Bin' to all campuses to further improve recycling rates. Implement this program in conjunction with waste education for all building users.

Public place recycling

Improve recycling systems and practices at all food retail outlets and in public places on campus.

Specialised recycling solutions

Introduce recycling programs for specialised waste streams and activities on campus such as wine making, laboratories and accommodation sites. Evaluate the furniture recycling pilot program and investigate ongoing solutions.

Flight emission reduction

Investigate opportunities and technologies to support staff in avoiding flight travel, and consider carbon offset options for remaining flight emissions.

ACHIEVEMENT

ACTION



Students recycling food waste in Hub Central, North Terrace Campus.

Water efficiency



Ecoleader from the School of Agriculture, Food and Wine, Waite Campus

TARGET

40% reduction in potable water intensity (kL/GFA m2) by 2020 (2014 baseline)

As the driest state, in the driest inhabited continent in the world, water is a precious resource in Adelaide.

For many years the University has been working on reducing reliance on potable water by improving irrigation practices, utilising non-potable water sources and upgrading campus buildings with more efficient tapware. Since 2010, the North Terrace campus has reduced potable water consumption by 31% through the installation of new pipework to plumb recycled (GAP) water to irrigate gardens, lawns and sports ovals. An upgrade to plumbing systems in the Badger Laboratory in collaboration with the School of Physical Sciences in 2012 also helped contribute to the decrease.

At the Waite campus, the School of Agriculture, Food and Wine have championed water efficiency related to the irrigation of vineyards by successfully applying for Green Project Funding to install soil moisture sensing technology. This system is used by students to monitor and respond to the irrigation needs of the vines in real time in relation to weather events.

To further reduce potable water consumption, three key strategies will be employed to improve water management. Due to the nature of research and teaching activity on the Waite and Roseworthy grounds, these campuses will be the focus of projects to capture and reuse rain water for irrigation. The North Terrace campus will be the focus of retro-fits in bathrooms to improve efficiency. Installation of water sub-metering at each campus will help identify leaks in a timelier manner and will help measure the effectiveness of water efficiency strategies.

Campus water management plans

Develop campus specific water management plans to detail consumption patterns and outline efficiency activities, campaigns, initiatives and projects to ensure water efficiency efforts are maintained long-term. Campus water management plans will include a sub-metering strategy for each campus to allow for closer metering and monitoring.

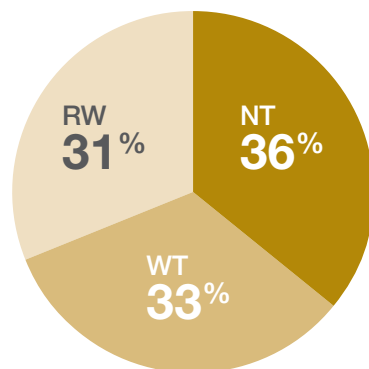
Rainwater capture and reuse

Expand existing rainwater capture and reuse systems at Waite and Roseworthy campuses to reduce consumption of potable water, particularly for irrigation requirements.

Water efficiency retrofits

Refurbish buildings with more efficient plumbing technology to reduce potable water consumption in busy areas such as bathrooms and kitchens.

CAMPUS POTABLE WATER CONSUMPTION SPLIT (2015)



ACHIEVEMENT

31%
DECREASE IN
MAINS WATER
USE AT NORTH TERRACE



Vineyards at the Waite Campus.

Engagement activities



Students event on the Barr Smith Lawns, North Terrace Campus.

TARGET

20% annual increase in participation in Ecoversity engagement activities (from a 2015 baseline)

The Ecoversity program has had great success in engaging our campus community in sustainability campaigns and initiatives.

Each year, students learn about Ecoversity through events and campaigns centered on the busy North Terrace campus. Open Day, Re-Use events, Careers Day, Ride to Uni Day and many more events provide an opportunity for students to learn and participate in sustainability initiatives. Half a million dollars of Green Project funding has been provided to staff and students for local sustainability pilots including organic recycling technology, edible gardens, lighting upgrades and office energy efficiency projects. The University has also won a national award and been highly commended for a fun and successful approach to student waste education.

By collaborating with leaders in schools and facilities, the University's sustainability values and goals can be shared and realised. New technology can achieve efficiencies however our collective action will bring the greatest value, and is key to the success of the Plan. Ecoversity events and resources will help inspire and mobilise our community to prompt sustainable change to everyday life on campus. Progress on targets will be reported regularly and information made available to celebrate achievements and target more effort if required.

The Campus Sustainability Plan aims to connect our community in new ways to rethink how we use resources, test innovative ideas and collaborate on projects to share benefits. As the founding partner of the Carbon Neutral Adelaide strategy, the University will connect and collaborate with partners that share similar values to support the ongoing prosperity of our City.

Resource monitoring	Distribute information about the University's carbon footprint and progress on sustainability targets to help staff and students understand consumption patterns and raise awareness about the importance of individual actions.
Ecoversity building user guides	Develop and promote Building User Guides for occupants to optimise building efficiency and comfort by providing information about control systems e.g. after-hours control settings, recycling systems and other related topics.
Ecoversity excellence – recognition	An annual award to recognise the outstanding effort, enthusiasm and positive action of individual staff and students towards the University's sustainability targets.
Waste education	Develop and deliver waste education programs for students to ensure correct recycling practices to avoid waste generation and maximise recycling rates. Provide tailored information to staff, incorporating information about e-recycling and battery recycling. Expand the popular Re-Use events to students at Roseworthy and Waite.
Ecoversity student living campaigns	Develop an education program for students focusing on sustainable living practices with specific campaigns related to energy use, water consumption, cycling to campus and recycling practices.
Campus sustainability reporting	Develop and promote campus-specific sustainability reports detailing the progress of sustainability targets, success stories and planning underway for new projects.
Ecoversity community events	Develop a series of coordinated events, campaigns and promotional activities across all campuses to disseminate sustainability messages incorporating 'how-to' workshops, newsletters and social media.
Green project fund	Continue to deliver the successful Green Project Fund to support locally led sustainability pilots. These projects are sized to test new technologies, support collaboration and demonstrate best practice sustainability on campus linked to teaching and research outcomes.
Environmental compliance and reporting	Implement systems, processes, policies and practices required to maintain the University's mandatory and voluntary environmental reporting requirements.

ACHIEVEMENTS



\$500k
INVESTED IN CAMPUS
SUSTAINABILITY
PROJECTS



100+
ECOVERSITY
EVENTS



Student Intern at an Edible Garden workshop, North Terrace Campus.

Training and skills



TARGET

- 20% annual increase in participation in Ecovercity training and skill-based programs (2015 baseline)

Creating a sustainable community requires individuals to have the knowledge, skills, values, capacity and motivation to respond to the complex sustainability issues they encounter in their personal and working lives.

The Campus Sustainability Plan will help cultivate young sustainability professionals by providing resources and opportunities for undergraduates to develop environmental awareness, critical thinking and problem solving in relation to sustainability. Effective communication skills, and emotional intelligence will be fostered through hands-on experience and internships.

Since 2010, 62 students from all faculties have been involved in sustainability internships through the Ecovercity program. Projects have included building energy benchmarking, energy and water efficiency, auditing, social media, waste education, event management and environmental policy and management.

The Ecovercity Award will provide funding for undergraduates to be inspired, deepen knowledge and build professional networks at sustainability related conferences. An extra-curricular sustainability training program focused on transferable skills and professional development will be delivered through the Ecovercity program, along with real-world project experience within the Infrastructure branch.

Linking our teaching and research to operations is the epitome of campus sustainability, spreading the value of investment right across the institution. Seven strategies will provide resources and funding for multidisciplinary career development for young sustainability professionals, and ensure our community is supported in practicing campus sustainability.

ACHIEVEMENT

62

ECOVERCITY
INTERNS



Ecoversity Award

Provide grant funding for undergraduate students from all faculties to attend extracurricular sustainability related conferences, workshops and events to support their undergraduate degrees establish networks and develop early professional development skills.

Ecoleader program

Deliver the Ecoleader Program for staff to provide resources and support for local sustainability representatives who want to lead sustainability initiatives.

Sustainability skills and training

Deliver a practical and interactive sustainability training program for undergraduate students that incorporates new knowledge, transferrable communication skills and professional development opportunities.

Ecoversity induction

Work with Human Resources to develop a component to the University's staff and contractor induction framework to convey sustainability expectations, targets and standards.

Participate in Orientation Week events to inform new students about campus sustainability, such as waste and recycling, Ecoversity programs, and end of trip facilities.

Cycling skills and education

Support staff and students choosing to cycle to campus through regular bike maintenance and cycle safety workshops.


Ecoversity student position

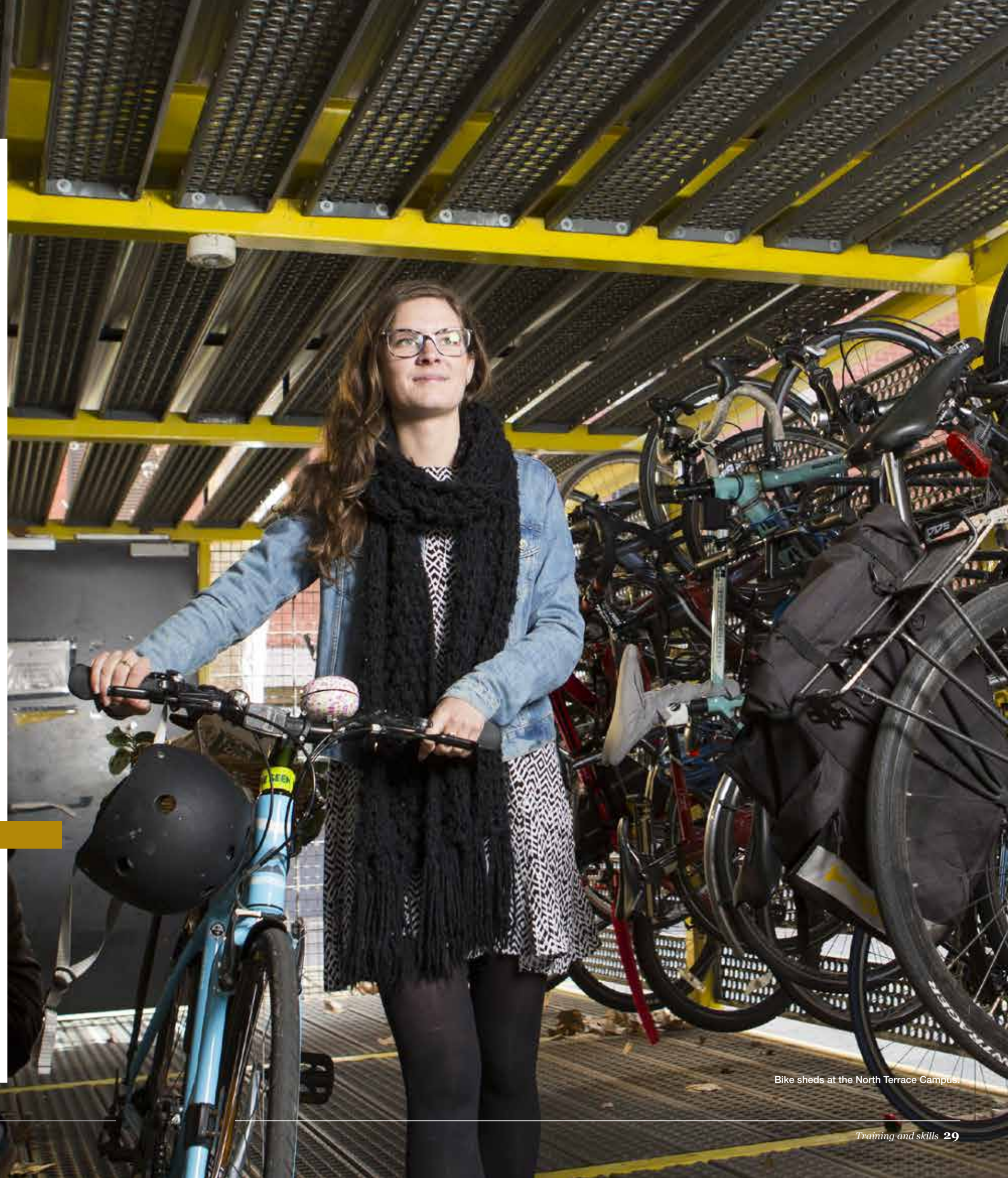
Create a part-time student position within the Infrastructure Branch to help deliver the University's sustainability strategies.

Internships for sustainability careers

Continue to provide opportunities for students from all faculties to undertake work experience and internships with the Infrastructure Branch to support delivery of the Campus Sustainability Plan.

ACHIEVEMENT


82%
OF STUDENTS
USE SUSTAINABLE
TRANSPORT
TO TRAVEL TO CAMPUS



Bike sheds at the North Terrace Campus.

Investment and purchasing

TARGET

- 10% annual increase in the procurement of 'sustainable and ethically sourced' office supplies on campus (2015 baseline)

As a University that prides itself on climate adaptation research and teaching, embedding sustainable investment and procurement considerations through our supply chain offers an opportunity to advance sustainability through the broader economy and align our academic pursuits.

The University will undertake a review of its current investment portfolio and develop a long term strategy that considers,

- > global trends in the low carbon economy,
- > ethical investments that support positive social change, and,
- > alignment with strategic focuses in our academic and research pursuits.

The strategy will also consider the University's ongoing legal and financial responsibilities into the future.

Individual staff and students can influence a more sustainable economy by making considered purchasing decisions, and a large majority of schools, faculties and departments already choose to purchase 100% recycled copy paper and stationery items made from recycled content. Strategies will focus on providing support through targeted information and resources for those responsible for planning campus events and purchasing office supplies.

The University was the first higher education institution in the state to achieve Fair Trade accreditation in 2012, and is proud to support the advancement of ethical purchasing by providing Fair Trade tea and coffee options on campus. The Ecoversity Program will continue its long association with the Fair Trade Collective (student club) who promote the broader benefits of Fair Trade, and support advancement of the movement on campus.

Ingkarni Wardli building, 6 star Green Star (design), North Terrace Campus.

Fair Trade Collective

Sustainable investment

Develop an investment strategy consistent with the University's commitment to environmental and social sustainability considering ongoing legal and financial responsibilities.

Sustainable procurement practices

Support sustainable procurement practices through the development of resources for staff, detailing preferred product choices and evidence of supplier sustainability credentials.

Fair Trade

Maintain the University's Fair Trade accreditation and support staff and students in ethical purchasing options on campus.

Sustainable events

Provide support to staff and students in event planning and management roles to improve the sustainability of campus events related to set-up, event merchandise, catering, waste and recycling, collateral and transport planning.

ACHIEVEMENT



Fair Trade Collective at O'Week event on the Maths Lawns, North Terrace Campus.

Governance, implementation and reporting

The University's Estate and Infrastructure Committee will oversee governance of the Campus Sustainability Plan.

The Estate and Infrastructure Committee provides advice to the University's Council on the development of all real estate and infrastructure strategy which underpins and facilitates objectives in teaching and research, taking account of overarching State and Federal government strategies.

The University's Infrastructure Branch will lead the delivery of the strategies in collaboration with local leaders situated in schools, faculties and departments. The Infrastructure Branch will also report to the Committee and the University community on the progression of strategies and targets. Under the University's Legal Compliance Framework, the Infrastructure Branch maintains the University's environmental legislative reporting requirements to a number of State and Federal regulators including the Clean Energy Regulator and the Environmental Protection Authority.

Glossary

ACTS - Australasian Campuses Towards Sustainability A non-profit member based organisation representing higher and further education institutions within Australia and New Zealand. www.acts.asn.au

Carbon Dioxide Equivalent CO₂-e
An internationally accepted measurement that encapsulates all greenhouse gases based on their global warming potential.

Carbon emissions The release of greenhouse gases and/or their precursors into the atmosphere over a specified area and period of time. The term greenhouse gas emissions is utilised interchangeably with the term carbon emissions.

Carbon Neutral Adelaide State Government initiative to make Adelaide the world's first carbon neutral city by 2025.

EFTSL Equivalent full-time student load.

FTE Full-time equivalent (relates to staff).

GAP water Glenelg to Adelaide Pipeline.

Greenhouse gas (GHG) emissions
The release of greenhouse gases, such as carbon dioxide, methane and nitrous oxide, into the atmosphere. The term carbon emissions is utilised interchangeably with the term greenhouse gas emissions.

Potable water Water supplied from the tap that is safe to drink or to use for food preparation without the risk of health problems.

Renewable energy Energy that comes from resources which are naturally replenished on a human timescale such as sunlight, wind, rain, tides, waves and geothermal heat.

Scope 1 Direct greenhouse gas emissions e.g. corporate fleet or on-site energy generation.

Scope 2 Indirect greenhouse gas emissions from the consumption of purchased electricity.

Scope 3 Other indirect greenhouse gas emissions that occur as a result of the University's activities, such as waste disposal, air travel, outsourced services and transmission losses.

Sustainable and ethically source office supplies All products classified as 'sustainable' by the university's office supplier – includes products with recycled content, recyclable products and products certified under Fair Trade, Rainforest Alliance and UTZ.

For further enquiries

Infrastructure
The University of Adelaide
SA 5005 Australia

Telephone: +61 8 8313 5871

Email: ecoversity@adelaide.edu.au



adelaide.edu.au/ecoversity



facebook.com/EcoversityUoA



instagram.com/ecoversityuoa

DISCLAIMER: The information in this publication is current as at the date of printing and is subject to change. You can find updated information on our website at adelaide.edu.au. With the aim of continual improvement the University of Adelaide is committed to regular reviews of the degrees, diplomas, certificates and courses on offer. As a result the specific programs and courses available will change from time to time. Please refer to adelaide.edu.au for the most up to date information or contact us on 1800 061 459. The University of Adelaide assumes no responsibility for the accuracy of information provided by third parties.

CRICOS 00123M © The University of Adelaide. April 2017 2709-12