

Overview

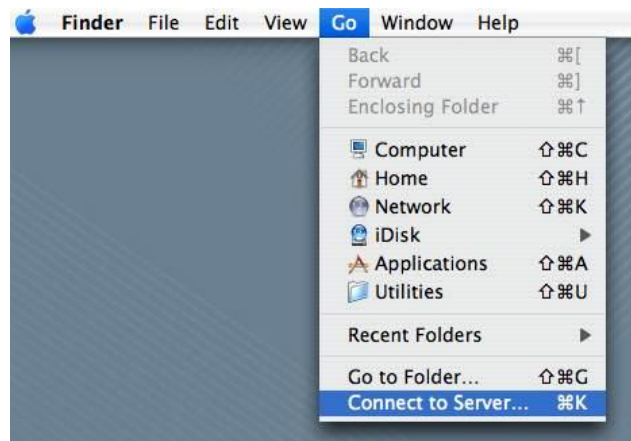
This document is the procedure for logging into the Active Directory (AD) shares in Mac OS10.x. without the ADMit Mac client installed.

Requirements

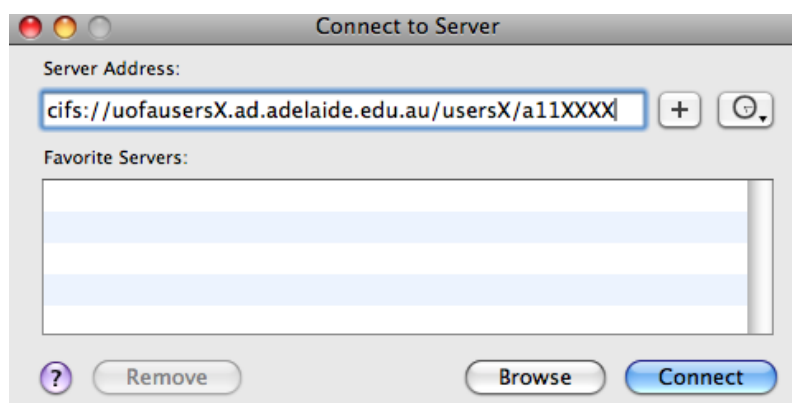
Connection to network
Permission to view shares in AD

Procedure –

Click on the "Go" menu in the menu bar at the top and choose "Connect to Server"



In the Server Address field put the complete name of the server share on Cifs server: ie., `cifs://uofausersX.ad.adelaide.edu.au/usersx/aXXXXXXX` you will need to know the [absolute path of the share](#) click the plus sign to add the path to the favourite servers list

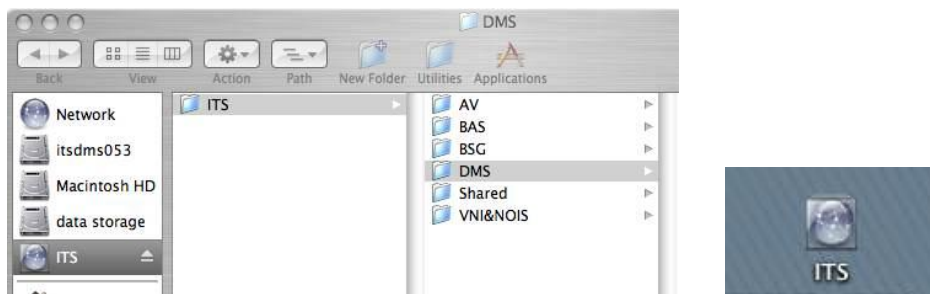


Once you have typed the server address click "Connect"

If the server address is correct and the server is up and running you will see a login box. Type your employee ID in and the password that you use to connect to the University network and click Connect.



If your username and password are correct the Volume you want to log into should appear as an icon on the desktop and as a volume in the sidebar. The Volume will open in a window displaying the directories to which you have access privileges

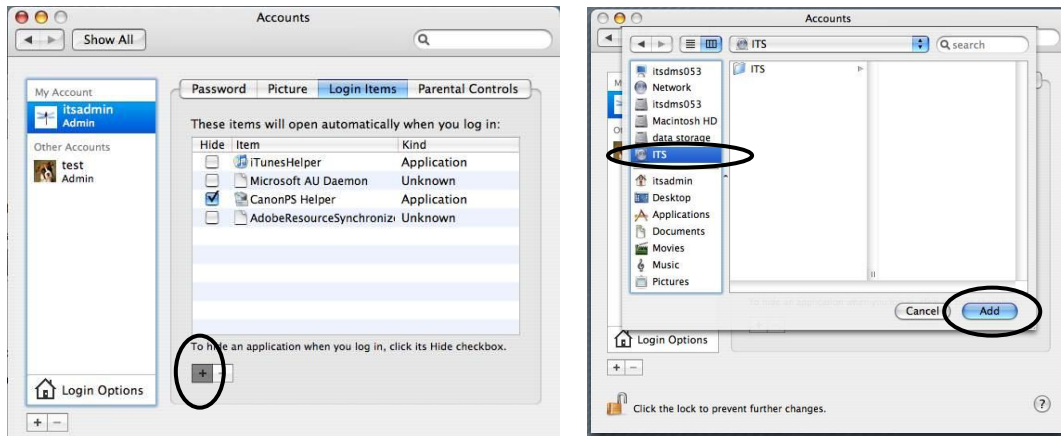


To set the volume to mount automatically at login go to the System Preferences from the Dock or from the blue apple in the upper lefthand corner of the screen and choose the Accounts pane. Select your account name and the Login options button.

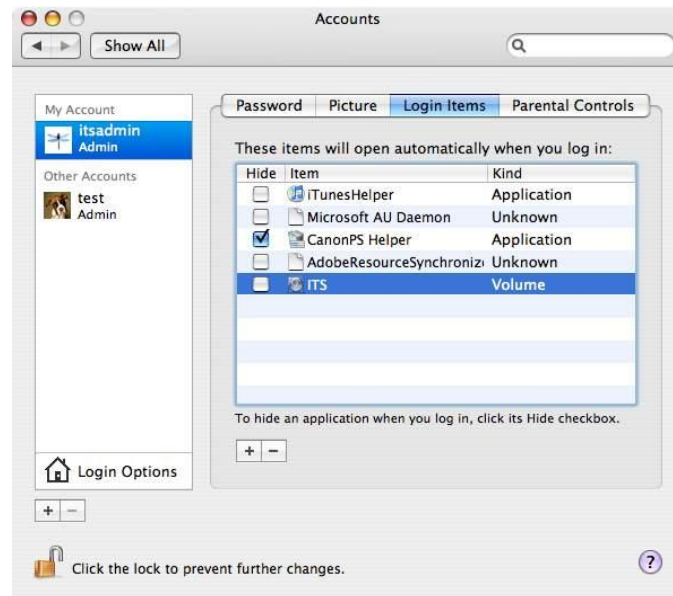


Select the Plus (+) button to add the Volume to Login items. Choose the volume from the sidebar and click Add

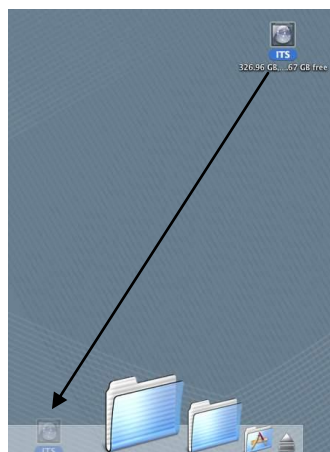
University of Adelaide, Information Technology Services DMS



The Volume will now mount automatically at your login and request authentication to the AD. Close the System Preferences window



To add it to your Dock drag the icon from the desktop (not the sidebar) to the righthand side of the Dock. This creates an alias that you can use to mount the Volume when you need it.



University of Adelaide, Information Technology Services DMS

To eject the volume before you logout drag the volume icon from the desktop to the Trash or click the eject button next to the icon in the sidebar.

