

# WIRELESS NETWORK

Configuration Guide for Windows XP

Author: Ethan Palmer (Updated Dec 09 – Greg Powell)

Version: 2.1-Final

# Table of Contents

System Requirements.....	2
Wireless Configuration.....	2
Proxy Configuration.....	5
Microsoft Internet Explorer .....	5
Mozilla Firefox .....	5
Appendix.....	5
Certificate Management.....	6
Troubleshooting.....	7

## System Requirements

- Microsoft Windows XP Service Pack 2 or above
- A Computer with in-built or external Wireless (802.11A/B/G/DraftN) Support
- Active Staff, Student or Visitor access to IT Services with a University ID No. (ie. A1234567)

## Wireless Configuration

1. Right click the wireless network icon in the system tray (The area next to the clock) and choose 'View available wireless networks'



Figure 1.1 – Opening the 'Wireless Network Connection' window

2. Click the 'Change the order of preferred networks' link in the left sidebar then click the 'Add' button (fig 1.3)

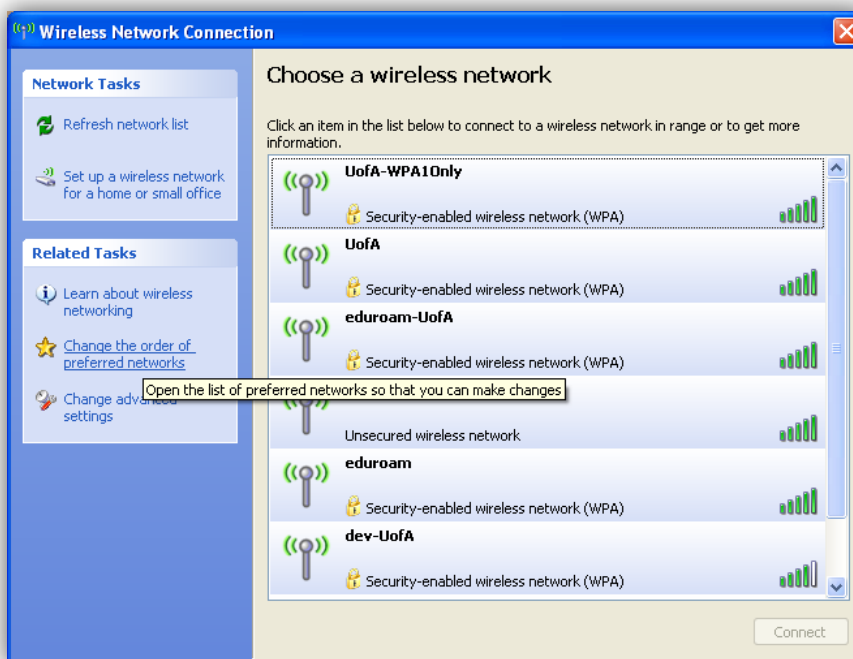


Figure 1.2 – The 'Wireless Network Connection' window – showing a list of available networks

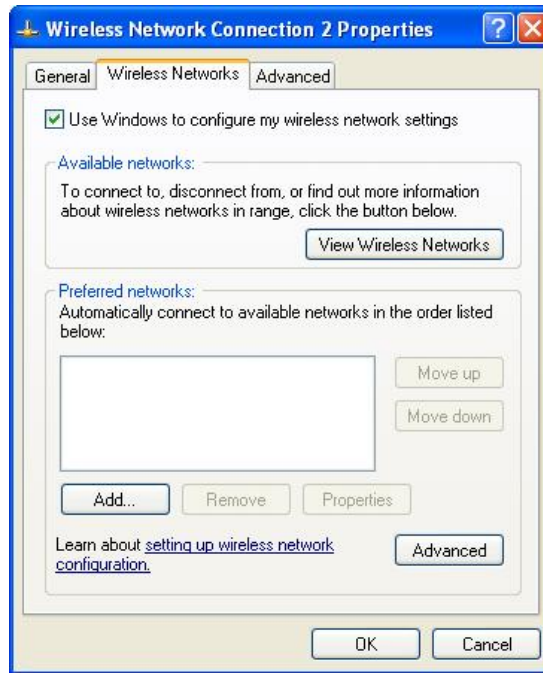


Figure 1.3 –Wireless Network Connection Properties window – choose ‘Add’.

3. Enter the required settings as per figure 1.4. If ‘WPA2’ is not available on the ‘Network Authentication’ menu – please choose WPA with TKIP for data encryption.
4. Click the ‘Authentication’ tab and change the ‘EAP Type’ to ‘Protected EAP (PEAP)’ and ensure **no** other boxes on this page are checked, then click the ‘Properties’ button

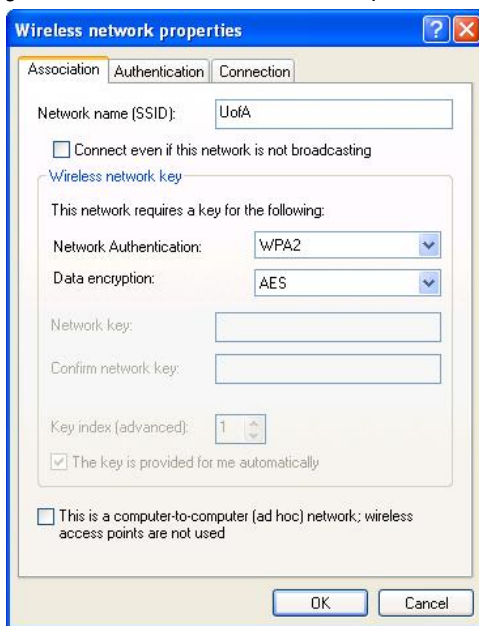


Figure 1.4 –Entering Connection Details

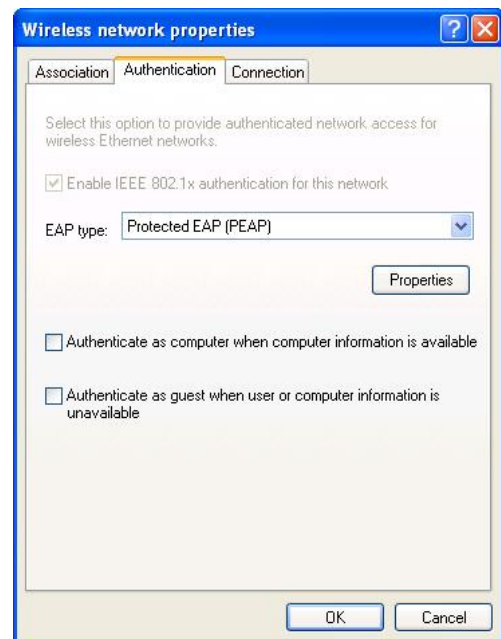


Figure 1.5 – Changing Authentication Settings

5. Enter the details as per figure 1.6, paying special attention to the ‘Connect to these servers’ field and the Certificate List

**Note:** You will need to have the GoDaddy Class 2 Certificate installed. If this certificate is not present, please read ‘the ‘Certificate Management’ section on page 6.

6. Click the ‘Configure’ button and untick ‘Automatically use my Windows logon and password’ Click OK to close this box then OK twice more to close the properties window

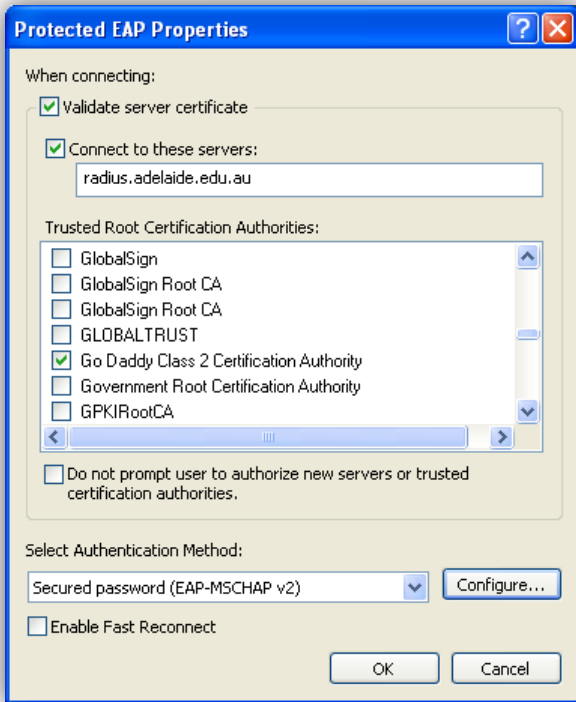


Figure 1.6 – Entering PEAP Settings



Figure 1.7 – Disabling automatic authentication

7. Momentarily, a balloon similar to *figure 1.8* may appear requesting additional connection information. Click the balloon. If you see a box similar to *figure 1.9* then enter your University ID and password (Logon domain left blank), if instead a dialogue like *figure 1.10* click appears, click OK to continue. If this balloon incessantly presents itself without connecting, please refer to the trouble section of this guide.

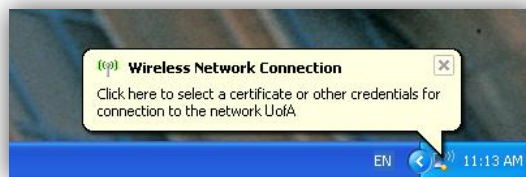


Figure 1.8 - Information Balloon requesting additional information

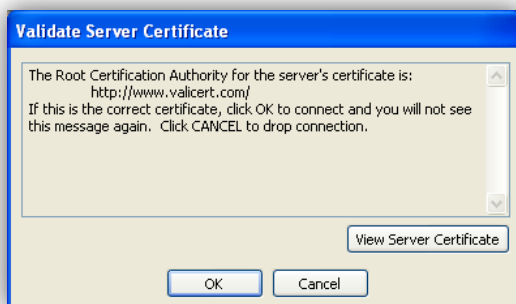


Figure 1.10 – Accepting the root certificate

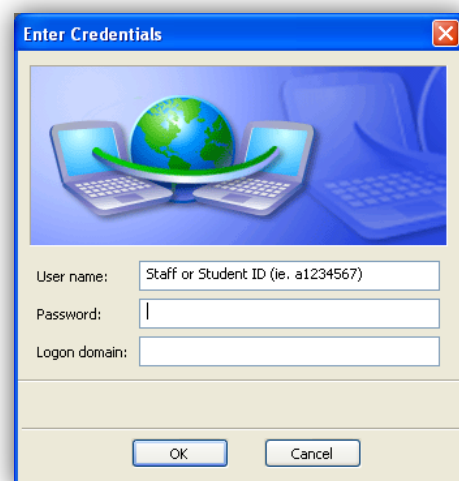


Figure 1.9 – Entering your University ID and Password

8. You should now be connected to the university Wireless Network, to verify this – double click on the Wireless Network icon in your system tray, you should see something similar to *figure 1.11* within the connection window.  
**Note:** You will only have access to Adelaide University internal websites at this point, to get external internet access please follow the proxy configuration section of this guide.

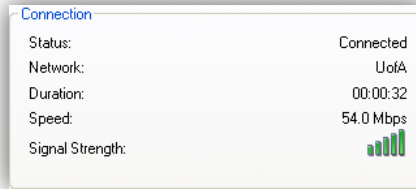


Figure 1.11 – A successful connection to UofA

## Proxy Configuration

### Microsoft Internet Explorer

1. With Internet Explorer open, go to the 'Tools' menu and choose 'Internet Options'

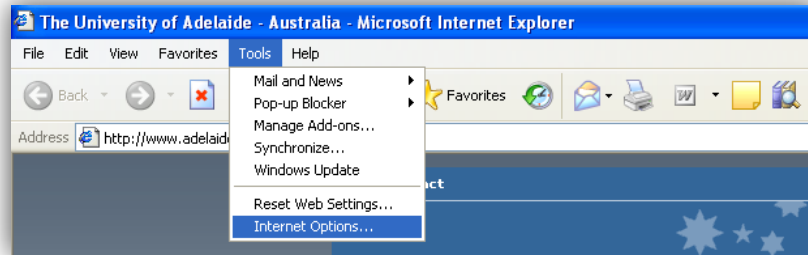


Figure 21 - Opening Internet Options

2. Go to the 'Connections' tab (top RHS) and choose 'LAN Settings'
3. Tick the box 'Use automatic configuration script'. NOTE: 'Automatically detect settings' and 'Use a proxy server for your LAN' are left unticked
4. In the Address field, enter *http://www.adelaide.edu.au/digest-proxy.pac*
5. Click OK to close the 'LAN settings' dialogue and OK again to close 'Internet Options'. Internet Explorer may need to be closed and restarted to read the changed settings.



Figure 2.2 - The Internet Options Window

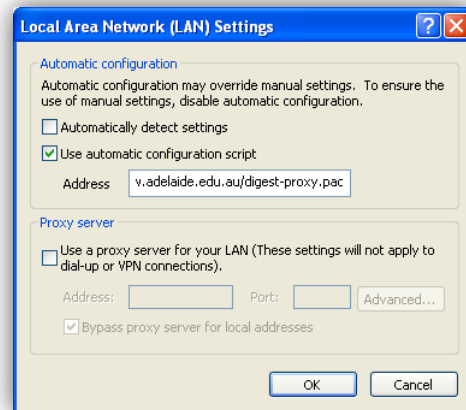


Figure 2.3 –Configuring Proxy Servers

Your computer should now be configured for access to external websites – you can test this by attempting to visit an external website such as Google ([www.google.com.au](http://www.google.com.au))

**Note:** This configuration will allow you to access External websites via the University Network; however these proxy settings may prevent access to websites while off campus, to restore web access outside the university please follow these steps:

1. With Internet Explorer open, go to the 'Tools' menu and choose 'Internet Options'
2. Go to the 'Connections' tab and choose 'LAN Settings'
3. Untick the box 'Use automatic configuration script'
6. Click OK to close the 'LAN settings' dialogue and OK again to close 'Internet Options'. Internet Explorer may need to be closed and restarted to read the changed settings.

### Mozilla Firefox

1. With Firefox open, go to the 'Tools' menu and choose 'Options'



Figure 3.1 - Opening Firefox Options

- Go to 'Advanced' icon, then select the 'Network' tab then press the 'Settings' button

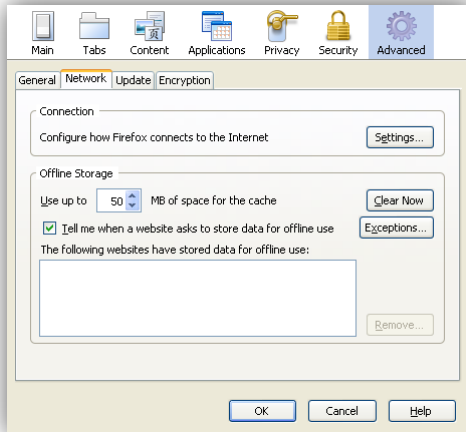


Figure 3.2 – The options menu, showing the 'Advanced' panel

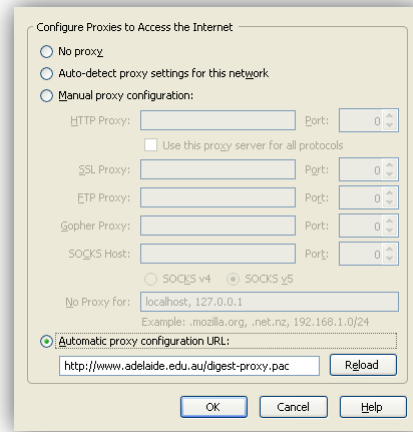


Figure 3.3 – Entering proxy settings

- Select 'Automatic proxy configuration URL' and in the field below it enter *http://www.adelaide.edu.au/digest-proxy.pac*
- Click OK to close the 'Connection Settings' dialogue then OK again to close the Options window.

Your computer should now be configured for access to external websites – you can test this by attempting to visit an external website such as Google ([www.google.com.au](http://www.google.com.au))

Note: This configuration will allow you to access External websites via the University Network, however these proxy settings may prevent access to websites while off campus, to restore web access outside the university please follow these steps:

- With Firefox open, go to the 'Tools' menu and choose 'Options'
- Go to 'Advanced', select the 'Network' Tab then press the 'Settings' button
- Select the 'No proxy' option
- Click OK to close the 'Connection Settings' dialogue then OK again to close the Options window.

## Appendix

### Certificate Management

If you were not able to find the GoDaddy Class 2 Certificate during Step 6 of the wireless configuration guide you will need to install the certificate as detailed below

- Download the GoDaddy Class 2 Certificate from <http://www.adelaide.edu.au/its/wireless/configuration/>
- Navigate to the location where you saved the certificate and right-click on it
- Click the 'Install Certificate' menu option
- The Certificate Import Wizard will open, click next twice then click finish
- A dialogue box will appear advising that installation was successful

## Troubleshooting

If a dialogue box constantly re-appears, please ensure the data you are inserting is correct. For instance, double-check passwords, have you included the 'a' at the start of your ID number, check for typographical errors in the Proxy settings dialog boxes. If you are experiencing difficulties connecting to the wireless network or following this guide, you can get help from the IT Service Desk

### For Staff

Contact the Service Desk on x33000 or email [servicedesk@adelaide.edu.au](mailto:servicedesk@adelaide.edu.au)

### For Students

North Terrace Campus – Please visit the 'Student Support Desk' located on the Info Desk, Level 3, Barr Smith Library  
Please note, opening hours are subject to change, latest times are posted at the Info Desk.

Waite and Roseworthy Campuses – Please contact the Service Desk on x33000 from a campus phone or \*\*1 from any Student Computing Suite.