

THE UNIVERSITY OF ADELAIDE
EXAMINATION FOR THE DEGREE OF B.A

June 1997

Early Greek Archaeology

7275/1193

Time: Two hours

In addition, candidates are allowed ten minutes, before the examination begins, to read the paper

Answer TWO questions from Section A, ONE from Section B.

- Section A

Either

a) Outline the chief characteristics of Mycenaean material culture. How derivative was it?

or

b) What were the chief characteristics of Geometric material culture?

Describe, using examples, the evolution of sacred architecture in the Greek world from the 10th to early 5th centuries B.C.

3. **Either**

a) Outline the development of black figure vase-painting to the end of the sixth century B.C.

Use examples.

or

b) Compare and contrast the style and development of Corinthian with Athenian vase painting from c. 700 B.C. to 500 B.C

- Section B -

4. **Either**

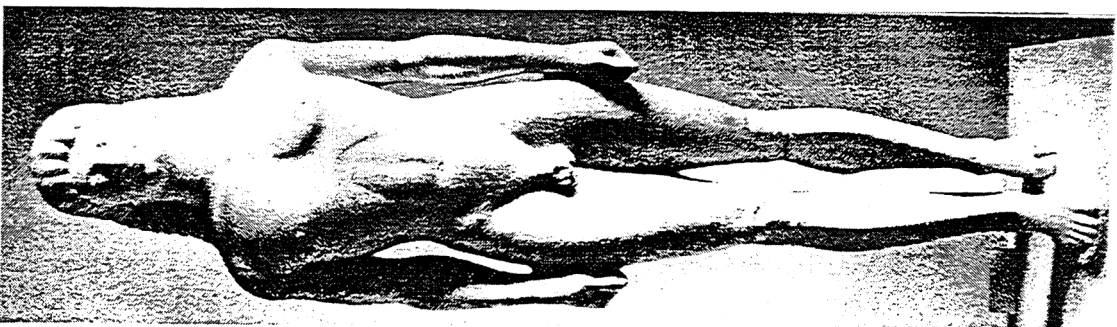
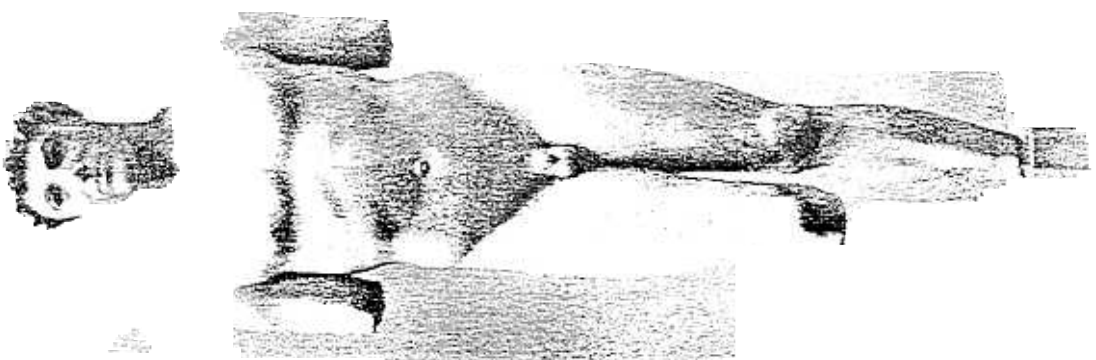
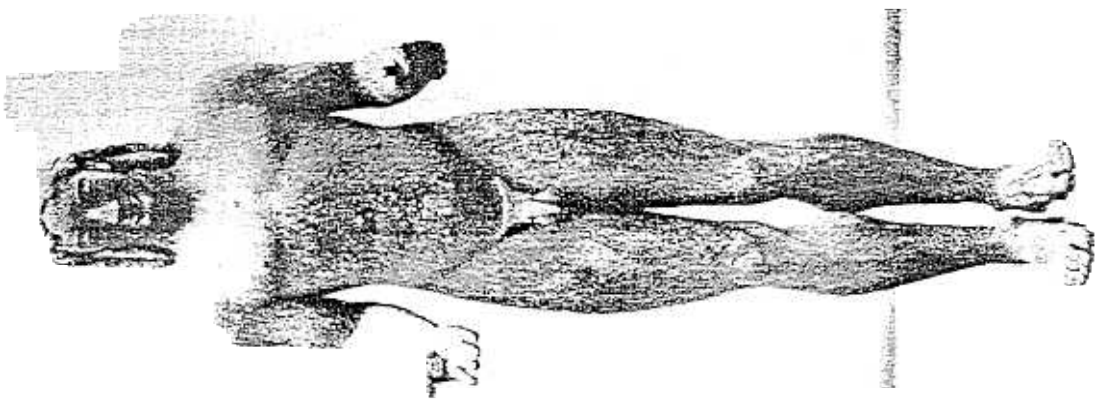
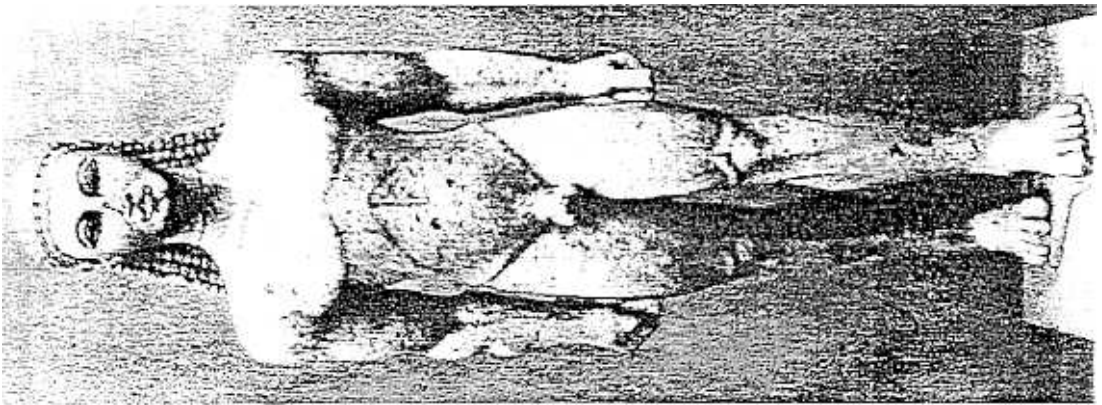
a) Critically evaluate the ways in which Greek Archaic sculpture has been dated.

or

b) Outline the chronological development of the *kouros* and, in doing so, place the illustrations *a - d* (next page) in dated chronological order.

Is it justified to call Athens a leader in Greek stylistic and technological developments from the Late Geometric period onwards? If so, to what extent?

6. Does the material culture of the Early Archaic period (7th century B.C.) have more in common with the Late Geometric period, or with the Later Archaic period?



f.
4
h.