

The University of Adelaide

Annual Report 2008

Part One: Annual Review





Forward: From the Chancellor

Two years ago, the University Council approved an ambitious North Terrace Development Strategy to replace ageing infrastructure across the North Terrace Campus. The aim of the Strategy is to help the University achieve its mission of being recognised internationally as a great research university and an Australian leader in research and teaching excellence. I am pleased to report that, despite the onset of the international financial crisis, the University has been able to record a good result for 2008 and that this important work has not been affected. Various refurbishment projects have been completed and work is well underway on the new nine-level Engineering Building on the Lower Level Campus. Once completed in readiness for Semester One 2010, it will undoubtedly become one of the landmark buildings on North Terrace Campus.

Graduation ceremonies are traditionally the highlights of the Academic Year. More than 5,500 students graduated this year and I had great pleasure in presiding over a number of the ceremonies in both Bonython Hall and Singapore. The graduation ceremonies in Singapore coincided with

the 10th Anniversary of the Ngee Ann–Adelaide Education Centre (NAAEC). A dinner at Singapore's Orchard Hotel honoured the achievements of the University's graduates in Singapore and the vision of two of the oldest and most respected institutions in the Asia–Pacific region — the Ngee Ann Kongsi and the University of Adelaide. The Singapore–Adelaide Alumni Fund was launched that evening. The Fund is designed to provide financial assistance to undergraduate students who are citizens or permanent residents of Singapore and are studying at the University of Adelaide. The dinner also provided the perfect backdrop for the Vice-Chancellor and President to announce the renaming of NAAEC as the University of Adelaide–Singapore Campus.

In August, my wife and I had the great pleasure of representing the University at the Lincoln College dinner in honour of the late Datuk Dr Sam Abraham, held in the Convention Centre in Kuala Lumpur. Graduating in Medicine in 1959, Dr Abraham became one of Malaysia's most highly respected medical practitioners, one of Asia's most senior paediatricians

and one of the founders of paediatric practice in Malaysia.

Amongst my other engagements for the year, those of interest included: the Annual Meeting of the University Community; the 125th Anniversary Open Day at the Roseworthy Campus; the Heritage Foundation fundraising dinner; the 1958 Graduates' Golden Jubilee Celebration; the Administrative Law Students' Forum; several Research Tuesday lectures; the annual University Professors' Forum, co-hosted with the Vice-Chancellor and President; and two meetings of the University Chancellors' Council. These meetings not only provide a networking opportunity for the chancellors of Australia's universities, but also allow us to discuss issues affecting the higher education sector and assist chancellors in their role as chairs of their university's Council.

Finally, I would like to acknowledge the work of all members of Council and its sub-committees who gave their time voluntarily. It has been a privilege to work with such a dedicated group of individuals and I look forward with pleasure to the year ahead.

Report of the Council of the University of Adelaide

For the period 1 January 2008 to 31 December 2008

To His Excellency, Rear Admiral Kevin Scarce AC CSC RANR
Governor of South Australia.

May it please Your Excellency, I have the honour to transmit to you the Report of the Council of the University of Adelaide for the period 1 January 2008 to 31 December 2008, furnished in compliance with Section 25 of the University of Adelaide Act 1971 (1 June 2007).

The Hon John von Doussa QC
Chancellor

Contents

Part one: Annual Review

From the Vice-Chancellor and President	3
Mission, Vision and Values	5
2008 at a Glance	6
Highlights of 2008	6
Student Statistics	8
Research Activity	8
Staff Statistics	9
Financial Performance	9
Higher Education Environment	10
Governance	12
Planning and Quality	16
Learning and Teaching	20
Research and Research Training	28
Internationalisation	40
Community Engagement	46
Property and Infrastructure	58
Financial Overview	60

The University's Financial Statements can be found in Part Two: Financial Statements



The University of Adelaide Annual Report is printed using soy-based inks on Mega Recycled FSC Silk paper, made from 50% Recycled post consumer waste and 50% fibre sourced from sustainably managed forests. Mega Silk is manufactured under the environmental management system ISO 14001.







From the Vice-Chancellor and President

2008 was a year without precedent for those of us in higher education. We eagerly awaited details of a higher education revolution promised by the newly-elected Labor Government and were presented with two major reviews — the Cutler Review of Innovation and the Bradley Review of Australian Higher Education. They, in essence, recommended full funding of research and a student-centred model of education that allowed for more flexibility, student choice and equity considerations.

While waiting for the outcome of these reviews, we have entered the worst global recession in the past 80 years. Australia is faring much better than the majority of OECD countries, but there is no question that this global financial crisis will have implications for the University.

Despite the challenges we now face, 2008 gave us plenty of cause to celebrate — both in terms of the success of our research performance and the recognition for our teaching excellence.

We achieved record research results for 2008, exceeding our research income target of \$131 million and surpassing our research publications output of the previous year by 14%. Building on our reputation as a research-intensive university,

in 2008 the University announced the formation of four new research institutes to tackle some of the most pressing challenges facing Australia and the world — the Robinson Institute focusing on reproductive health and regenerative medicine; The Environment Institute focusing on the management of natural resources; the Institute for Mineral and Energy Resources; and the Institute for Photonics and Advanced Sensing. Another two institutes focusing on plant sciences and cancer research will soon follow.

We have continued to improve the learning experience of our students and achieved a number of significant milestones in 2008. Eight staff were recognised as among the best educators in Australia, receiving national awards for excellence in teaching and learning. The University also welcomed a positive audit from the Australian Universities Quality Agency, which commended our outstanding curriculum and innovative approaches to learning and teaching. We were also commended for our language support programs and services provided for international students.

In 2008 the Commonwealth awarded the University \$11.1 million for improved teaching and learning facilities. This

money will be spent on improving and refurbishing teaching spaces across the University's campuses.

We also forged ahead with the University's most ambitious building program in many years. Work began on a new, state-of-the-art \$100 million maths, computer and engineering building on the North Terrace Campus, to be completed in 2010. A \$28 million Wine Innovation Cluster was opened at the Waite Campus, placing Adelaide at the centre of wine and grape research in the world. The University also unveiled the most high-tech medical teaching facility South Australia has ever seen — Bio Skills SA — complete with human simulator robots and a fully integrated audiovisual system for remote videoconferencing.

These works are integral to the success of our strategies in research and education and help position us as a major international institution.

The University of Adelaide continues its consistent record of achievement, thanks to the committed efforts of both staff and students. While 2009 poses some real challenges we will continue to uphold the highest standards in research and education, producing some of this country's finest graduates.

Professor James A. McWha
Vice-Chancellor and President



Mission, Vision and Values

Mission

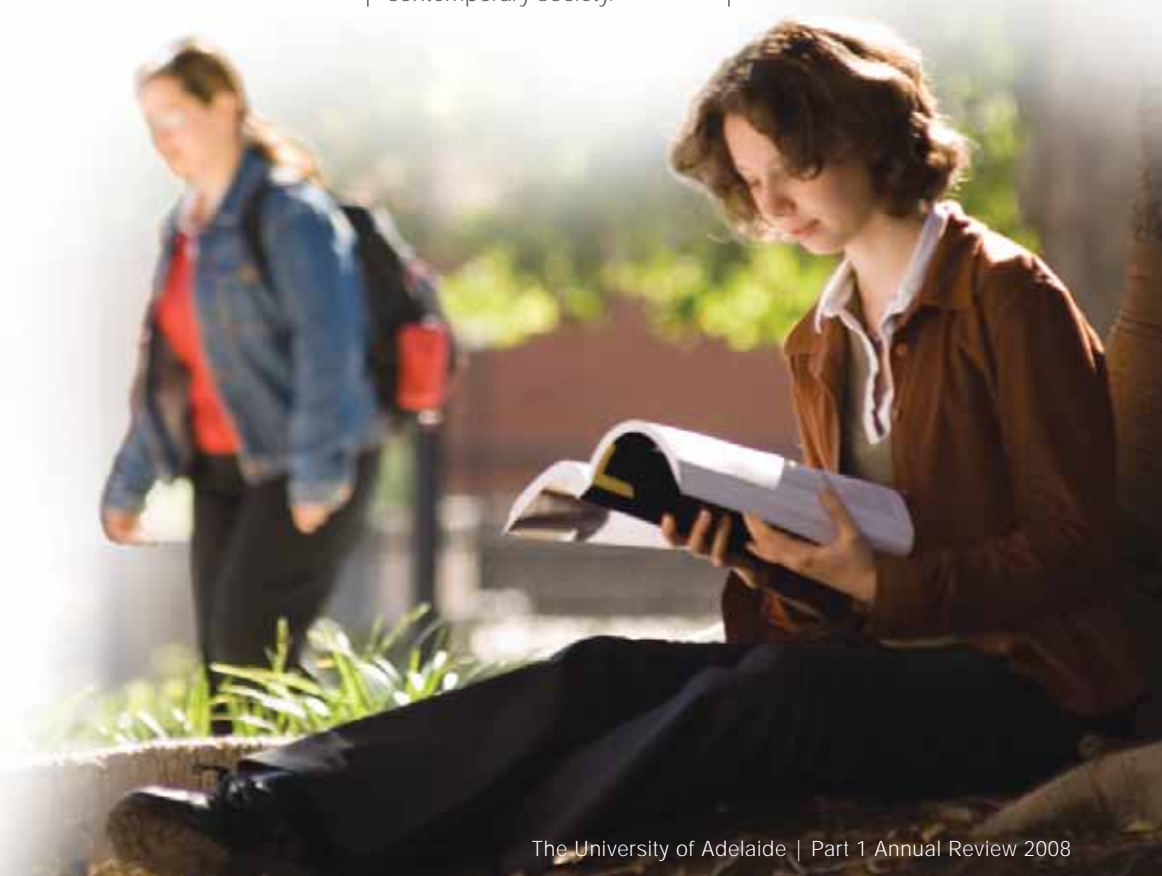
To be recognised internationally as a great research university and an Australian leader in research and teaching excellence, committed to the positive impact we can have on the lives of our students, staff and alumni as well as the local, national and international communities.

Vision

The University of Adelaide will build upon its tradition of innovation through high-impact research and excellent teaching across a broad range of disciplines and professions. It will be a growing, internationally focused and financially sustainable institution, enterprising in its approach to new opportunities as they arise and clear and consistent in its essential directions. It will provide a vibrant intellectual environment that will be satisfying for staff, rewarding for students, and engaging of the community, engendering a sense of pride in our contribution to contemporary society.

Values

1. We will pursue excellence in all that we do.
2. We will act with fairness, integrity and responsibility.
3. We will respect the rights and responsibilities of freedom of inquiry and expression.
4. We will be engaged with the local, national and international communities.
5. We will encourage innovation, creativity and breadth of vision.





2008 at a Glance

Some highlights of 2008

January

The world's largest search engine, Google, invests in the University's computer programs to improve students' problem-solving skills.

University hosts international cyberspace crime conference to discuss the latest developments in e-forensics.

Scientists achieve major breakthrough in discovering the causes of intellectual disability.

February

Virologists lead a \$2-million, five-year project to develop new vaccines and explore better treatment options for hepatitis C sufferers.

Researchers make a world-first discovery that links viral infection with high blood pressure during pregnancy and pre-term birth.

Former Australian Democrats Leader, Senator Natasha Stott Despoja, appointed a Visiting Research Fellow at the University of Adelaide.

March

For the third year in a row, the University of Adelaide is named Employer of Choice for Women.

Acclaimed novelist Eva Sallis becomes the University's writer-in-residence.

Young geologist and postdoctoral researcher Kate Selway named the 2008 Young Achiever of the Year for South Australia.

April

New research by the University's Centre for Neurological Diseases unlocks the links between chemical signals, brain cancer and stroke.

University celebrates historic 10th anniversary milestone with its Singapore partner, Ngee Ann Kongsi and announces plans to double student numbers in Singapore by 2010.

Photonics Professor Tanya Monro awarded prestigious Australian Research Council Federation Fellowship, boosting the University's reputation as a world leader in optical fibre research.

2008



May

University collaborates on international research project to sequence entire genetic record of the platypus over the last 160 million years.

Researchers make world-first discovery that reveals mutated gene causes epilepsy and mental retardation in women.

New institute established at the University to serve the mining and energy sectors in the Asia-Pacific region.

June

MBA student Christopher Ainsworth wins Fulbright Scholarship to the United States for research into emergency services education.

University researcher Dr Alex Johnson leads an Australian project to help address the world's biggest nutritional deficiency — lack of iron.

New \$30 million Trans-Tasman fund helps University researchers develop commercial opportunities for their work.

July

Australia's longest-serving former foreign affairs minister, Alexander Downer, appointed Visiting Professor with the School of History and Politics.

University announces plans to build \$26 million 'super greenhouse' that will place it at the cutting edge of international plant research.

Researchers develop novel approach to treating advanced prostate cancer that has fewer side effects.

August

A \$430,000 collaborative project involving the University will use simulators to train prospective miners in one of the world's most hazardous environments.

Eight academic staff receive national awards for Excellence in Teaching and Learning.

Five University of Adelaide researchers win SA Young Tall Poppy of Science Awards.

September

Adelaide medical student awarded one of the nation's top cardiovascular prizes for his research into atrial fibrillation.

University's new stem cell centre involving 180 research scientists and students gives hope for stroke victims.

Historic Bonython Hall glows pink to help launch National Breast Cancer Foundation's annual Pink Ribbon Campaign.

October

Australia's first agricultural college — Roseworthy Campus — celebrates 125th birthday with a series of events to honour its contribution to the State and nation.

University of Adelaide law graduate Benedict Coxon is named South Australia's Rhodes Scholar for 2009.

University wins \$22 million in federal funding for new medical research.

November

Zoologist Dr Jeremy Austin leads a new national project to save endangered Tasmanian Devil from extinction.

World-leading \$28 million wine research cluster opens at the Waite Campus.

University researcher unearths stone-age burial in Germany from 4600 years ago, yielding earliest evidence of people living together as a nuclear family.

December

New research institute launched to tackle environmental crises in Australia and the world.

University awarded \$11.1 million for improved learning and teaching facilities.

Record research results announced for 2008, with over \$140 million received from government, industry and other funding bodies.

Student Statistics

	Persons		EFTSL	
	2008*	2007	2008*	2007
Total Student Enrolments	21,311	20,472	16,839	16,012
Commencing Student Enrolments	7,785	7,539	5,831	5,732
Aboriginal & Torres Strait Islander Students	167	134	122	104
International Students — onshore	5,191	4,738	4,385	3,989
International Students — offshore	666	731	297	369
By Level of Program				
Postgraduate Research	1,814	1,851	1,269	1,294
Postgraduate Coursework	4,218	3,913	2,379	2,226
Bachelor Degrees	14,342	13,816	12,691	12,013
Other	937	892	499	480
By Faculty				
Engineering, Comp. & Maths Sciences	3,922	3,744	3,162	2,975
Health Sciences	3,326	2,999	2,646	2,386
Humanities and Social Sciences	3,791	3,772	2,902	2,847
Sciences	2,841	2,948	2,271	2,346
Professions	6,927	6,579	5,552	5,172
Central Areas	504	430	305	286
By Campus				
North Terrace (includes hospitals)	19,412	18,490	15,706	14,758
Roseworthy	192	216	167	178
Thebarton	51	54	10	13
Waite	288	335	244	294
Other Australian	725	653	427	401
Offshore	643	724	285	367
By Gender				
Female	10,361	9,884	8,186	7,741
Male	10,950	10,588	8,653	8,271
By Attendance Type				
Full-Time	17,268	15,295	14,969	14,123
Part-Time	4,043	5,177	1,869	1,889

*Preliminary Figures based on 2008 Student Submissions
Source: DEEWR 2007–2008 Student Data Collection

Research Activity

Research Income	2008*	2007	2006	2005
	\$000	\$000	\$000	\$000
Australian Competitive Research Grants	70,008	60,699	62,038	56,264
Other Public Sector Research Funding	40,094	28,649	27,462	25,887
Industry and Other Funding for Research	24,611	20,413	18,169	13,016
Cooperative Research Centres	6,004	6,011	6,813	6,684
Total University Research Income	140,717	115,722	114,482	101,851

*Preliminary figures based on 2008 financial statements

Research Block Funding (2006-2009)	2009	2008	2007	2006
	\$000	\$000	\$000	\$000
Institutional Grant Scheme	15,744	16,232	16,500	16,371
Research Infrastructure Block Grant	12,961	13,641	13,820	14,248
Research Training Scheme	27,809	28,127	28,989	29,757

Staff Statistics

	Persons *		FTE *	
	2008	2007	2008	2007
Total Staff	2886	2803	2614	2548
By Type				
Academic	1293	1255	1163	1136
Professional	1593	1548	1451	1412
Casual	n/a	n/a	n/a	n/a
Academic Staff by Faculty				
Engineering, Computer & Maths Sciences	197	187	190	181
Health Sciences	359	327	300	271
Humanities and Social Sciences	176	190	156	164
Sciences	378	380	355	363
Professions	155	143	136	130
Central Areas	28	28	27	27
Academic Staff by Function				
Teaching and Research	857	828	763	737
Research Only	424	416	389	388
Teaching Only	2	2	2	2
Other	10	9	10	9
Academic Staff by Gender				
Female	467	438	406	380
Male	826	817	757	756

AR

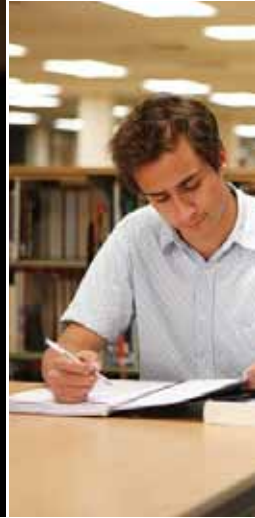
9

*Note: Full-time and Fractional Full-time Staff Statistics
 Casual staff figures for calendar year
 Source: DEEWR 2007 & 2008 Staff Data Collection

Financial Performance

	Consolidated		University	
	2008	2007	2008	2007
	\$000	\$000	\$000	\$000
INCOME STATEMENT				
Revenue	637,519	536,137	593,232	496,792
Expenses	605,274	503,442	558,440	462,919
Operating Result	32,245	32,695	34,792	33,873
Margin	5.1%	6.1%	5.9%	6.8%
BALANCE SHEET				
Net Assets	875,036	865,567	867,180	856,376
Current Ratio	1.4	1.5	1.2	1.3
Cash and Bank Bills	68,453	81,414	63,456	74,998

The University recorded an operating result of \$34.8 million in 2008, compared with an operating result in 2007 of \$33.9 million. This is an excellent achievement in light of the current global financial crisis, supported by continued growth in student numbers and research performance. This result, combined with the operating surpluses of previous years and receipt of \$48m in Infrastructure Grants in 2008, has enabled the University to reinvest in its student, staff and facilities, including the construction of the state-of-art Engineering Building, commencement of the National Plant Phenomics centre and planned development of the New Veterinary School building and Student Learning Hub.



Higher Education Environment

The Commonwealth Government

The first year of the Rudd Labor Government has heralded a number of changes to the higher education landscape in Australia, including reviews of both higher education and the National Innovation System. In March 2008, the Review of Australian Higher Education was commissioned, led by Professor Emeritus Denise Bradley. The final report from the Review was released in December 2008 and recommends a number of substantial reforms with a formal government response anticipated by March 2009. In August 2008, the Cutler Review of the National Innovation System was released with the Government indicating their intention to produce a response in early 2009 that will outline a ten-year vision for research and innovation in Australia. The formal government responses to these two reports will largely determine the future of the operating environment for higher education across Australia.

The Education Investment Fund (EIF) was introduced

in May 2008 as one of the Commonwealth Government's Nation Building funds. The EIF incorporates funding available via the Higher Education Endowment Fund (HEEF), which it will replace from 2009, as well as additional funding available from the federal budget surplus. The key priorities for expenditure of EIF are capital expenditure and infrastructure renewal and refurbishment in universities and vocational institutions (including research facilities). The one-off Better Universities Renewal Fund (BURF) also provided half-a-billion dollars to universities for urgent and critical upgrades in late 2008, recognising these as a crucial need. The University of Adelaide was allocated \$15.5 million from this fund.

Significantly, the Government is also proposing that universities be able to charge a student amenities fee to cover service provision. This is capped at \$250. The new amenities fee has been proposed to assist universities to help provide a range of services to students in the wake of Voluntary Student Unionism (VSU). Students

can defer payments of the amenities fee into the SA-HELP income-contingent loan scheme.

Also, from January 2009, full-fee domestic undergraduate places will be phased out. This means that entry to university for domestic students can only be based on merit and signals a loss of income for the University from these students. The Government has offered additional Commonwealth-supported places in lieu of these full-fee places.

In September 2008, the Government passed legislation removing both the Higher Education Workplace Relations Requirements (HEWRRs) that obliged universities to offer Australian Workplace Agreements (AWAs), and the National Governance Protocols. It was determined that all universities adequately met the National Governance Protocols and these no longer form the basis of any legislative or funding eligibility criteria. The Government has highlighted its expectation that universities will continue to strive for effective and



accountable governance, but the responsibility to govern and manage their internal affairs has reverted to the university.

In February 2008, the Excellence in Research Australia (ERA) initiative was announced. This will be developed by the Australian Research Council (ARC) and will "assess research quality within Australia's higher education institutions using a combination of indicators and expert review by committees comprising experienced, internationally-recognised experts". In December 2008, the 'Indicators of Excellence', key guiding documents for the ERA, were released with the first trial of these to be undertaken in the first half of 2009.

The full impact of Commonwealth Government approaches to higher education will become clearer throughout 2009 as responses to the Bradley and Cutler reviews are formalised and new programs and initiatives such as the ERA begin to be implemented.

Global Opportunities and the Economic Crisis

The impact of the global economic crisis is likely to significantly affect universities. The current economic situation could have a range of implications for the University of Adelaide in the context of changing student demand, changing spending priorities for the federal government and the impact on our international student markets.

The Economic Security Package introduced by the Government has potentially diverted some of the funding earmarked for education, although its commitment to the "education revolution" has been reiterated as a key component of the Economic Security Package. The full financial commitment from the Government will become clearer as responses to the Bradley and Cutler reviews are delivered.

Worsening economic conditions around the world may also affect international student numbers, as fewer families will have the money required for an overseas education. Countering this is the decreasing value of the Australian dollar, making Australian education cheaper and a more appealing option, as well as the fact that education is viewed as a sound long-term investment, particularly in times of economic difficulty.

Historically, times of economic crisis have seen the number of international students slow. However, the University of Adelaide has exceeded its targets for commencing international student load at a time when growth declined nationally. Australian visa regulations favouring South Australia have helped in this regard, as has the State Government's strategy to make Adelaide a university city.

Higher Education and the State Government

The State Government's Strategic Plan update for December 2008 states that there is "positive movement" in South Australia's share of overseas students, with the target of doubling numbers by 2014 "within reach".

The Strategic Plan also has a goal to "better align institutions of higher education with the State's economic and social priorities". With much of China's economic rise reliant on energy and mineral resources, the State Government is making mining a significant focal point for future development. The University has responded with an increased emphasis on mining-related research and teaching.

Further opportunities still exist for exports of the University's education and research capabilities. With its diverse range of academic programs, strong links with industry and impressive record in research and development, the University is well positioned to partner with the State in this endeavour and to achieve a lasting impact on our society.

In terms of domestic students, the State target is to "increase South Australia's proportion of higher education students to 7.5% of the national total by 2014". The December 2008 Strategic Plan update indicates that this target is "on track" with "positive movement", although, as in the rest of the country, domestic student demand for university places has declined. This has been attributed to low unemployment levels and governments redirecting resources into apprenticeships and vocational education; however, the current economic climate is likely to see unemployment increase substantially and this in turn should increase domestic student demand.

Demographic predictions indicate that due to the profile of our ageing population, Year 12 enrolments in South Australia will continue to decrease and the ability to maintain local student numbers will be critical. Innovative measures will be required to improve the participation of traditionally under-represented groups.

In a global and national context several factors disadvantage the University: a smaller domestic market; population growth at half the national rate and an ageing population; lower household incomes; declines in traditional manufacturing industries; and a flow of younger people to other states. However South Australia, like the University itself, also has many advantages over its interstate counterparts and, with strategy and planning, is showing that obstacles can be overcome.



Governance

National Governance Protocols

In September the Federal Minister for Education, the Hon Julia Gillard MP, informed the University that the *Higher Education Support Amendment Bill 2008* had been passed by the Parliament. This meant that the *Higher Education Support Act 2003* no longer had provisions that enabled the imposition of the National Governance Protocols as a specific condition of a higher education provider's Commonwealth Grant Scheme funding. A voluntary code will eventually replace the Protocols. Pending its development and implementation, the Minister announced that the Protocols will be regarded as an ongoing benchmark for good governance practice. Provisions of the *University of Adelaide Act 1971* and the University's own internal policies ensure compliance with the Protocols.

2008 University Performance Report

At its April meeting the Council considered the annual University Performance Report, the final report associated with the 2004–2008 University Strategic Plan. The document presents a set of key performance indicators that reflect the institution's performance across a broad range of activities. Collectively these provide indications regarding the overall health, effectiveness and quality of the University. Measures include change over time and comparable data for other South Australian universities and the Group of Eight (Go8) universities for benchmarking purposes. The report is structured around the five key reporting areas of learning and teaching, research and research training, financials, staff and reputation.

The Report revealed that the University remains in a strong position, firmly within the Go8 grouping on all indicators.

University Budget 2009

Council approved the University Budget for 2009 at its December meeting, along with the associated Facilities-Related Capital Management Plan 2009–2012. In developing the budget the University sought to provide the necessary investment for growth, quality and impact; to maintain underlying operating performance relative to the Go8; to ensure staff costs are sustainable; and to ensure the stability and transparency of funding allocations. The budget was based on conservative student load targets, tight control on increased operating costs, and maintenance of the approved capital management plan.



Risk Management

As part of the University's risk management framework, Council approved an Internal Audit Plan for 2009. This plan is a slightly modified sub-set of the three-year Internal Audit Plan covering 2008–2010 approved early in the year. The objective of the internal audit approach is to provide assurance that controls in respect of key risks are in place and operating effectively.

The approval of a new, comprehensive Fraud Prevention Plan, including a Fraud Prevention Policy, demonstrated the University's commitment to effective fraud risk-management and prevention. The aim of the plan is to minimise the potential for fraud against the University, whether by staff or persons external to the University.

As part of its responsibility to oversee and monitor the assessment and management of risk, Council conducted a joint risk workshop with the Audit, Compliance and Risk

Committee. This enabled members of both bodies to make a significant contribution to the development of the University's Enterprise-wide Residual Risk Profile, which was approved in December. The process for identifying enterprise-wide risks included consideration of the University's inherent risks, followed by discussion of the control environment in order to understand the residual risk situation. These risks were then assessed using management-approved risk-ranking criteria for potential consequences and likelihood.

In accordance with requirements of the University's *Council Induction, Professional Development and Performance Review Statement*, Council members were briefed on their rights and responsibilities as members of the governing body. The session covered the duties and liability of Council members, conflict of interest and the contents of the *University of Adelaide Act 1971*.

Controlled Entities

Council considered the quarterly management reports of the University's controlled entities and approved their budgets and business plans for 2009. It also approved a reporting timetable for controlled entities for 2009.

Honorary Degrees

In 2008 the University admitted two distinguished candidates to its degree of Doctor of the University (*honoris causa*) for their distinguished creative contribution in the service of society:

The Honourable John Jeremy Doyle AC, Chief Justice of the Supreme Court of South Australia; and,

His Excellency, Mr Hieu Van Le, Lieutenant-Governor of South Australia.

Annual Meeting

The annual meeting of the University community was held on 18 February. The meeting was addressed by both the Chancellor and the Vice-Chancellor and was well attended by members of the University community.

Elections

Elections were held for student and staff members of the University Council. An election was also held for the Chair and Deputy Chair of the Academic Board.

Council Membership



The University of Adelaide Council and Senior Management
Council Meeting 5/08, 8 September 2008

Standing (L to R): Ms Heather Karmel, Professor Birgit Lohmann, Professor John Taplin, Professor Robert Hill, Professor Nick Harvey, Professor Simon Maddocks, Professor Michael Brooks, Dr Rodney Crewther, Mr Paul Duldig, Dr John Radcliffe AM, Professor Justin Beilby, Mr Ian Kowalick, Professor Pascale Quester, Mr Charles Bagot, Professor Peter Dowd, Ms Sophie Plagakis, Mr Shane McGregor, Ms Carolyn Anderson

Seated (L to R): Ms Pamela Martin, Ms Kate Castine, Professor James McWha, The Hon John von Doussa QC, Mr Ross Adler AC, Ms Dianne Davidson, Professor Valerie Linton

UA

14

In 2008 the Council comprised:

Ex-officio Members:

The Hon John von Doussa QC
Chancellor

Professor James McWha
Vice-Chancellor and President

Professor Robert Hill
Presiding Member and Chair
of Academic Board

Appointed members:

Mr Ross Adler AC
(Deputy Chancellor)

Mr Charles Bagot

Ms Kate Castine

Ms Dianne Davidson

Mr Ian Kowalick

Ms Pamela Martin

Mr Stephen Young

Co-opted Members:

Vacant

Elected members:

Academic Staff:

Dr Rodney Crewther

Professor Valerie Linton

General Staff:

Mr John Cecchin

Ms Kylie Percival

Students:

Ms Jessica Cronin
(until 5 March 2008)

Mr Aaron Russell
(until 5 March 2008)

Mr Philip Swaine
(until 5 March 2008)

Mr Trent Harron
(elected 6 March 2008)

Mr Zhen Ji
(elected 6 March 2008)

Ms Sophie Plagakis
(elected 6 March 2008)

Graduates:

Ms Carolyn Anderson
(elected 6 September 2008)

Professor Simon Maddocks

Dr Michael Penniment
(until 5 September 2008)

Dr John Radcliffe AM

Standing Committees of Council as at 31 December 2008

Academic Board: Chair —
Professor Robert Hill

Audit, Compliance and Risk
Committee: Chair —
Mr Charles Bagot

Convenors' Committee: Chair —
The Hon John von Doussa QC

Finance Committee: Chair —
Mr Ross Adler AC

People and Culture
Committee: Chair —
Mr Ian Kowalick

Senior Executive Review
Committee: Chair —
The Hon John von Doussa QC

Special Degrees
Committee: Chair —
The Hon John von Doussa QC

Council Secretariat

Council Secretary:
Ms Heather Karmel

Senior Officer:
Mr Andrew Starcevic

Senior Officer:
Ms Anne Wildy

Council Officer:
Mr Mariusz Kurgan

Senior Management as at 31 December 2008

Deputy Vice-Chancellor and
Vice-President (Academic)
Professor Fred McDougall

Deputy Vice-Chancellor and
Vice-President (Research)
Professor Michael Brooks

Vice-President
Services and Resources)
Mr Paul Duldig

Pro Vice-Chancellor
(Learning and Quality)
Professor Birgit Lohmann

Pro Vice-Chancellor
(Research Operations)
Professor Richard Russell AM

Pro Vice-Chancellor (International)
Professor John Taplin

Executive Dean, Faculty of
Engineering, Computer and
Mathematical Sciences
Professor Peter Dowd

Executive Dean, Faculty
of Health Sciences
Professor Justin Beilby

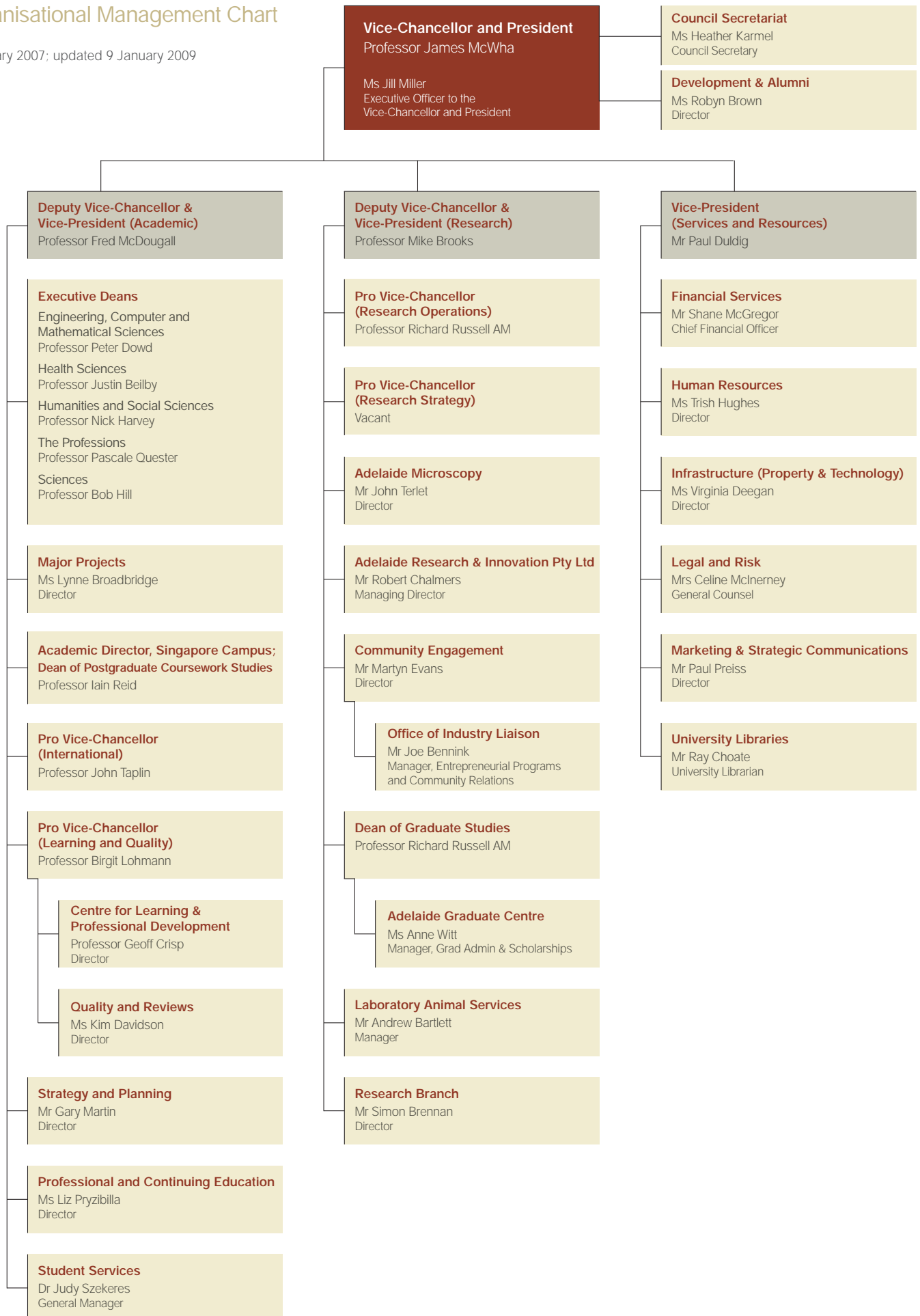
Executive Dean, Faculty of
Humanities and Social Sciences
Professor Nicholas Harvey

Executive Dean,
Faculty of the Professions
Professor Pascale Quester

Executive Dean, Faculty of Sciences
Professor Robert Hill

Organisational Management Chart

1 January 2007; updated 9 January 2009





Planning and Quality

Strategic Planning

The University of Adelaide's comprehensive process of strategic planning continued with vigour in 2008, with the public release in February of the University's Strategic Plan for 2008–2012, *Building a Great Research University*.

The Plan sets out the University's mission and vision, high-level goals and strategies for the core areas of business: Research and Research Training, Education, and Services and Resources. Integral to the plan is the pursuit of research excellence, focus and scale; continued advances in student numbers and the quality of their experience; and the effective management of resources, structures and processes. It also establishes high-level targets that enable the University to regularly review progress.

The Plan lays the foundations to become internationally recognised as a great research university, to develop significantly its research performance and reputation and to create a university community that thrives on research and innovation.

In a great research university, education and research are not alternatives but integrated, mutually supportive and equally valued activities. Research-intensive universities such as the University of Adelaide are able to provide their students with an excellent and distinctive education as a direct result of the proximity, integration and dissemination of extensive high-quality research activity.

The University intends to build on this distinction and ensure that it is central to the student experience. The curriculum and teaching will continue to be influenced by research and be developed and presented by excellent teachers: some may be primarily focused on teaching, but all will incorporate current research in their pedagogical practice. Students at the University of Adelaide will be given the opportunity, wherever possible, to apply the research methodologies that they learn in meaningful ways and on meaningful issues, drawing together the skills that they learn as part of their program of study.



Operational Planning

The University Operational Plan for 2009–2011 supports the Strategic Plan by outlining the major operational activities required to implement and achieve the University's strategies. Aligned with the Strategic Plan it identifies the targets and major operational plans for the core areas of the University's business. It also highlights the major priorities of the Divisions and Faculties over the next three years.

Together with the supporting Faculty and Divisional Business Plans, the University Operational and Strategic Plans form part of a systematic Institutional Planning and Performance Framework (IPPF). Introduced in 2004, the IPPF has been progressively developed over the last four years. The cornerstone of this framework is the ongoing review of past performance and implementation of practices leading to continual improvement such as annual progress reports. This process is supported by development and analysis of the University Performance Report as well as Performance Reports for Learning and Teaching, and Research and Research Training.

The annual update of student load and research income projections for the University provided the basis for the budget outlook considered by senior management. This provided the financial parameters around which the

priority operational objectives could be set. Priorities for the University in 2009 are continued growth with a focus on excellence, quality and innovation in education, research and service provision. In line with these objectives, Faculty and Divisional targets were determined, providing the financial underpinning for the development of individual Faculty and Divisional Business Plans, major strategic initiatives and the 2009 Budget.

The culmination of these processes was the development of a University Operational Plan for 2009–2011 highlighting the collective view of the University's senior management of the areas in which the University will focus its energy and resources during the next planning period to most effectively support achievement of the University's strategic goals.

Postgraduate Coursework Programs

In January 2008, a working party was established to review the University's current suite of postgraduate coursework program offerings and identify potential areas of growth. In late 2008, the Vice-Chancellor approved a set of recommendations aimed at improving the University's competitive position in the provision of postgraduate coursework programs.

Summer and Winter School

Consistent with the growth strategy of the *Strategic Plan 2008–2012*, a number of initiatives are under way to improve the participation of domestic, international, cross-institutional, non-award and study abroad students. Administrative support and marketing of summer and winter courses was centralised in the Office of the Deputy Vice-Chancellor and Vice-President (Academic) in 2008. A new website was established to provide comprehensive information to prospective students, and a marketing campaign was launched. A new range of winter courses with an Australian flavour was introduced by the Faculty of Humanities and Social Sciences, which proved popular with domestic, international, cross-institutional and study abroad students.

December enrolments saw an influx of students securing their places for Summer School 2009. A substantial number of courses had all available places filled on the opening day of enrolments, with student numbers exceeding the total enrolment for the previous Summer School period by the third day of enrolments. The University will continue to build the Summer and Winter School by expanding the range of course options to ensure that students are provided with improved flexibility and choice.

Quality

Australian Universities Quality Agency Audit

As part of the 5-yearly cycle of university audits conducted by the Australian Universities Quality Agency (AUQA), the University of Adelaide was audited in 2008. The University's Performance Portfolio was developed as part of the self-review process undertaken in the lead-up to the audit. The self-review highlighted a number of areas for improvement, many of which were already being addressed as the University strengthens its continuous improvement model for quality assurance and progressively embeds quality assurance principles in all its activities. The University submitted its Performance Portfolio to AUQA in June, and the AUQA Audit Panel visited the University in September, where they spoke with approximately 250 students and staff. Two Panel members also visited

the University's offshore educational partners in Singapore and Hong Kong in August. The AUQA Audit Report of the University was released on 17 December. The University welcomed the positive audit report, which commended the University's moves to strengthen the quality assurance role of the Academic Board, several outstanding and innovative curricula, innovative approaches to learning and teaching and moves towards a 'whole of university' approach in implementing these. Other commendations highlighted areas of international success such as the international agreements framework, programs that are leading the way in embedded English-language support, and the services and support provided for international students. In addition, the report affirmed many of the initiatives already underway across the University. Recommendations in the report in relation to areas for further action will be followed up through the Audit Report Implementation Plan.

Reviews

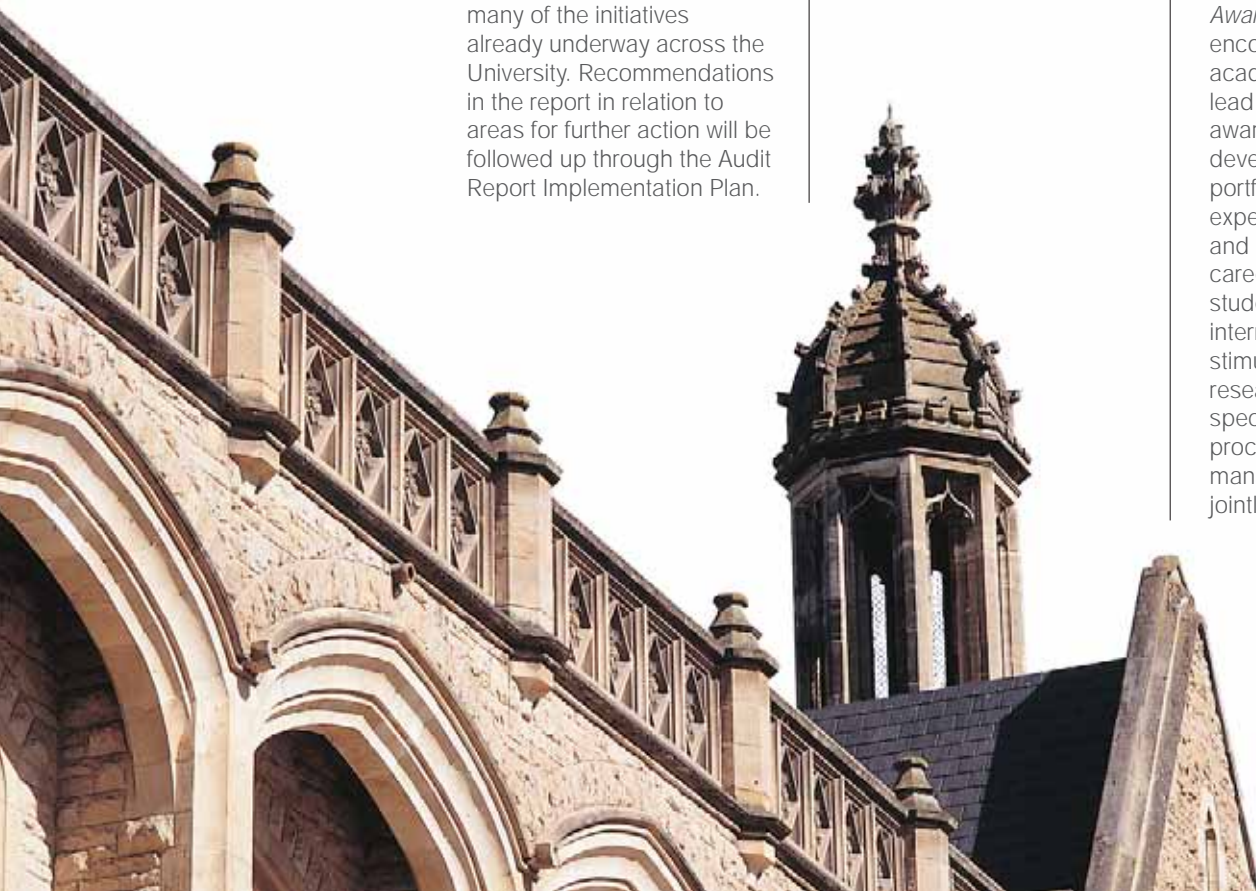
The AUQA Audit Report commented positively on the 5-yearly program review cycle that has been implemented by the University. The following program reviews were conducted in 2008:

- Undergraduate and Postgraduate programs related to Computer Science
- Undergraduate and Postgraduate programs in International Studies
- Undergraduate Economics programs
- Foundation programs in the Centre for Australian Indigenous Research and Studies (CAIRS)
- Undergraduate and Postgraduate programs related to Electrical and Electronic Engineering.

Review of Learning and Teaching Policies

The University Policy Development Framework was reviewed in 2008 and academic and student related policies are progressively being rationalised and revised in accordance with the updated framework. The following policies have been developed in 2008:

- *Assessment of Coursework Program Policy*. This recognises that assessment is a core academic activity and an essential component of the learning process. It provides for consistent assessment practices across the University and a formal governance requirement for Assessment Review Committees, and replaces the Good Practice Guidelines on Assessment for Staff and Students.
- *Jointly Conferred Academic Awards Policy*. The University encourages collaborative academic programs that lead to jointly conferred awards as a means of developing its education portfolio, enhancing the experience of its students and staff, expanding the career opportunities of its students, broadening its international outlook and stimulating collaborative research links. This policy specifies the principles and processes for establishing, managing and administering jointly conferred programs.



Frameworks for Benchmarking and Accreditation

- *Student Finances Framework.* A web-based framework has been developed which contains easily accessible information relevant to student finances. The Framework subsumes a number of fee-related policies and incorporates three new policies and guidelines:
- Fee for Award Programs and Courses Policy, which describes the principles and process for setting and charging tuition fees and incidental fees.
- Student Loans Policy that governs the University's Student Loan Fund (SLF), which provides financial support to students whose academic progress is being or may be impeded by a lack of financial resources.
- Incidental Fee Guidelines, which provide examples of the types of fees that may or may not be charged to students.

As part of the University's commitment to the establishment of robust quality-assurance processes, benchmarking and accreditation frameworks were established in 2008.

The University encourages benchmarking with comparable institutions within Australia and overseas as a method of improving performance and assuring standards. The Benchmarking Framework supports this commitment by outlining the core principles and the code of conduct expected of benchmarking projects undertaken at the University and providing information on authorisation, project initiation, project management and integration with existing quality assurance systems.

The University also recognises that external accreditation of its programs by professional bodies is an important component of a quality assurance framework. The Accreditation Framework comprises background information about professional accreditation at the University of Adelaide; accreditation schedules, reports and implementation plans; principles, procedures and responsibilities for the accreditation process; a checklist for professional accreditation process; and a flowchart describing the accreditation process.

Survey Framework

In November 2008, the Survey Framework was released, with the first meeting of the Survey Reference Group held in December 2008. The Survey Framework and Reference Group have been established to ensure that surveys conducted in the name of the University of Adelaide:

- are of a consistently high standard
- do not duplicate data collection conducted through other University surveys
- do not compromise population samples through the overlap of surveys
- do not over-survey the University's core stakeholders, and
- are disseminated and utilised appropriately.

The Framework was developed in response to the increasing volume, complexity, importance, and interrelationship between the numerous surveys conducted throughout and by the University. It outlines the conditions under which staff, students, alumni, and other stakeholders of the University may be involved in surveys, the application processes and procedures for scheduling of surveys, and the requirements for the dissemination of data and outcomes derived from surveys.

The Survey Reference Group comprises representatives from each Faculty and Division and reports to the Pro Vice-Chancellor (Learning and Quality). Adherence to the Framework will ensure that the University will be provided with robust data and analysis for its quality assurance, benchmarking and continuous improvement purposes.





Learning and Teaching

As part of the University's commitment to continually improving the quality of learning and teaching, a number of new initiatives were implemented during 2008.

Education Plan

The University's goals and aspirations in learning and teaching are addressed through the Education Operational Plan, which supports the 2008–2012 University Strategic Plan. The Education Plan includes goals and strategies to provide a distinctive learning experience for students, via provision of excellent and innovative program offerings, high-quality supervision of student research, and student-focused administration and support services. There is an increased emphasis on graduate programs, both coursework and research, which will provide advanced opportunities for students to develop their skills and attributes in a research-rich environment that promotes critical thinking.

Initiatives to Improve Learning and Teaching

The University received \$500,000 from the 2008 Learning and Teaching Performance Fund. This is an acknowledgement of the University's excellence in learning and teaching, and the money have been reinvested in a range of innovative projects, across all faculties, designed to improve learning and teaching outcomes for students. Recognising the importance of assessment in student learning and student outcomes, the University developed a new Assessment for Coursework Programs policy, which enunciates the principles that underpin the University's approach to assessment. New, innovative curricula were developed in Dentistry, Veterinary Science and Engineering, and a major university-wide project was undertaken to explore initiatives to improve student retention. High-quality program offerings are a hallmark of the University; in order to facilitate collaboration in the development of new program proposals, and to support the University's strategic direction, a new two-stage program approval process has been introduced. Peer-mentoring and internship programs were introduced in a number of faculties, and regular feedback on the student experience was obtained through course and program Student Experience of Learning and Teaching surveys and through student focus groups.

Centre for Learning and Professional Development

Initiatives of the Centre for Learning and Professional Development (CLPD) that establish the University's commitment to improving the quality of learning and teaching are:

- The Writing Centre in the Barr Smith Library created an initiative to assist students with their writing skills. Students are offered individual consultations with a learning advisor for assistance with strategies for answering assignment questions, how to critically analyse and interpret evidence, and how to reference correctly and avoid plagiarism.
- A program of informal meetings between volunteers and international students whose first language is not English. The volunteer program provides language support for students from non-English speaking backgrounds who have an additional need to improve their oral communication. In this program trained volunteers are matched with one or more students, and volunteers and students arrange their meetings to suit their individual needs and time availability.

There are currently 40 volunteers who work with 50 international students. Volunteers are men and women from all walks of life, from those who are actively engaged in work or study but spend some lunchtimes with their students, to retirees with greater availability.

Online Learning

An upgrade to the online education resource MyUni was completed at the end of 2008 with additional features available for staff and student use. New or enhanced features include the ability of staff to podcast feedback to students on their work and provide oral notes in addition to text-based documents, the use of wikis for group projects, and the ability to present virtual classroom sessions and have these recorded for later review by students. A new Online Content management system was tested with MyUni in the second half of the year so that staff and students will be able to readily access teaching resources covered by copyright and special licence provisions. Approximately 1,577 individual lectures were audio-recorded and made available to students in 2008, as well as 1,693 video-recorded lectures. The daily use of MyUni during teaching semesters is now up to 10,000 individuals.

Several academic staff have been trialling a new approach to teaching called Just-in-Time Teaching. This methodology allows students to complete online diagnostic quizzes before classes. Teachers review the students' results and adapt their teaching so that it concentrates on those issues that are most relevant to the students' learning. Teachers are able to spend more time on concepts that the students may be finding difficult and less time on those areas of the course that students find straightforward.



Academic Professional Development

Eleven University of Adelaide academics graduated in the Graduate Certificate in Higher Education in 2008 and one graduated in the Graduate Certificate in Online Education. A total of 209 sessional teachers attended development workshops during the year and 51 academic staff completed the 'Teaching at University' course. Seventy-eight staff attended workshops as part of the Cultural Awareness Program, where topics included: The big picture; Cross-cultural communication; Internationalisation of the curriculum; and Research communication in the multicultural academy.

These development programs have a significant impact on the quality of teaching in the University as participants share effective learning and teaching strategies across disciplines.

Collaboration with TAFE

The University has established and implemented a systemic and effective approach to increase collaboration with TAFE.

With the assistance of faculties, the University has been working towards formalising collaborative agreements. This approach has seen the existing arrangement between the School of Dentistry and TAFE Gilles Plains renegotiated, providing a model for resource sharing and credit transfer in the area of Oral Health.

In addition, the University has enhanced communication by developing an articulation and credit transfer website to publicise relevant policies and procedures. The Guidelines for Staff have been revised to make the arrangements for collaborative developments explicit. Information on TAFE collaboration has been updated progressively as credit transfer and articulation arrangements have been established.

As a result of these activities, the University and TAFE are facilitating pathways for students to move between the sectors.

Transition Unit — First Year Experience

Recognising that the first-year experience is pivotal in improving retention rates, peer mentor programs were conducted in the School of Business (for both undergraduate and postgraduate students), School of Economics, School of Architecture, Landscape Architecture and Urban Design and the Faculty of Sciences. The equity-based SmoothStart peer mentoring program was expanded to include Wilto Yerlo and a peer mentor scheme was run to welcome and assist newly arrived residents to the University of Adelaide Village. A peer tutoring program was also piloted in the School of Economics.

A network of peer mentor program coordinators was established to provide a forum for academic and professional staff university-wide to share information, ideas and outcomes of programs.



Orientation

In 2008, the Transition Unit developed a three-tiered approach to orientation called UniStep (University Student Transition Experience Program). The first tier included traditional orientation week activities, with the focus on orienting first year students to the campus, providing opportunities to meet with other students and attending preliminary lectures. The second tier offered first-year students the opportunity to attend comprehensive transition to University lectures held during orientation week, and the third tier introduced a six-week extended orientation program.

Approximately 3,800 commencing students attended orientation week with 2,000 attending the Vice-Chancellor's Welcome in Bonython Hall. Study preparation sessions, library tours and IT information sessions attracted nearly 4,000 attendees. A Welcome Centre on Goodman Lawns and on the Hughes Plaza made it possible to answer the many questions of new students as well as promote services, run competitions and provide entertainment. In addition, a two-week intensive program for international students focused on providing information and addressing issues specific to this cohort.

Scholarships

The Coursework Scholarships Committee (CSC) considered the selection of recipients for the Commonwealth Scholarships (Accommodation [CAS], Education Costs [CECS]), Indigenous Enabling [CAS-IE and CECS-IE], Indigenous Access [IAS], Adelaide Access, and Vice-Chancellor's Scholarships. These scholarships increase higher education participation by students from low socio-economic backgrounds, particularly Indigenous students and students from rural and regional areas or from particular equity groups. A total of 78 Access scholarships of four-year duration, 119 CAS, 168 CECS, 17 CAS-IE, 29 CECS-IE and 43 IAS were awarded. The four Vice-Chancellor's scholarships were awarded to two male and two female students, all of whom had outstanding academic records.

In 2007 the University of Adelaide introduced two merit scholarship schemes, which were continued in 2008.

The University of Adelaide South Australian Merit Scholarships are for South Australian students who accept a Commonwealth-supported place at the University of Adelaide and who have demonstrated outstanding academic merit by achieving a Tertiary Entrance Rank (TER) of 99.95 (excluding all bonus

points). These scholarships provide an allowance of \$10,000 to assist students with their education and living costs in the first year of a Bachelor level program.

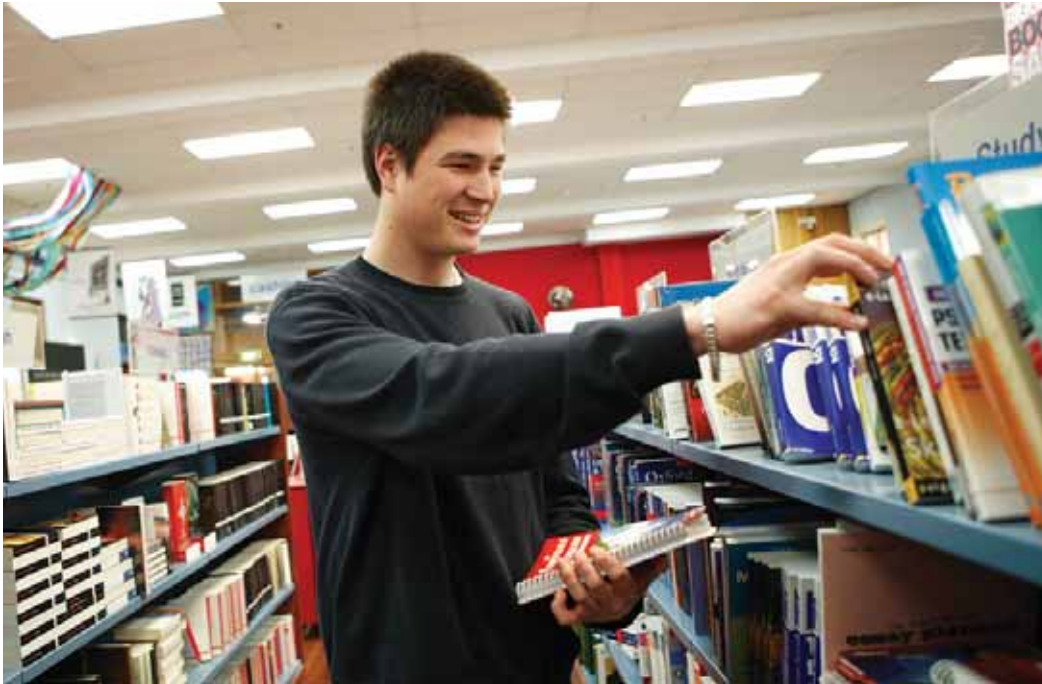
The University of Adelaide Principals' Scholarships are available for one student from each school in South Australia that had students completing Year 12 studies in 2007. In 2008, the scheme was extended to also cover all schools in the Northern Territory, Broken Hill and border Victoria. Students must have accepted a Commonwealth-supported place at the University of Adelaide and have demonstrated outstanding academic merit by achieving a TER of 90 or greater (after the addition of the University's Fairway Bonus if applicable) and made a significant contribution to their school or wider community. These scholarships provide an allowance of \$5,000 to assist students with their education and living costs in the first year of a Bachelor level program.

In 2008, 14 students were awarded South Australian Merit Scholarships and 98 students were awarded The University of Adelaide Principals' Scholarships.

In 2008, the University of Adelaide introduced a further scholarship scheme for 2009 for students from areas of

South Australia affected by drought. These scholarships are for South Australian students who accept a Commonwealth-supported place at the University of Adelaide and who have demonstrated academic merit by achieving a TER of 75 or greater (after the addition of the University's Fairway Bonus). These scholarships provide an allowance of \$5,000 for education and living costs in the first year of a Bachelor level program to assist students from families who have suffered financially from the drought.

These scholarships are in addition to the existing prestigious Adelaide Undergraduate Scholarships (four available) and the Andy Thomas Scholarship, which are awarded to academically outstanding students who made a significant contribution to their school and to the wider community and showed potential for leadership, creativity and innovation in the future. These valuable scholarships provide a living allowance of \$5,000 for up to four years and for students' contribution to HECS to be paid by the University.



Undergraduate Entry

The University's Coursework Entry Committee (CEC) is responsible for providing advice on undergraduate entry policy and practices for local and international admissions.

In 2008, a Bonus Points Review Working Group was established with representation from each faculty to review the current outcomes of the Bonus Points Scheme, future benefits and costs of continuing with the Scheme relative to its original objectives and other relevant issues. The Committee endorsed the Working Group's recommendation to retain subject bonus points as the default position for all programs; however, the Scheme is to be amended to provide performance-based bonus points from 2011 onwards. The Committee agreed to exempt the Bachelor of Medicine and Bachelor of Surgery program (MBBS) from the Scheme following recommendations from the Working Group. The Committee also approved a proposal to expand the Fairway Bonus Points Scheme to schools with a three-year average university participation rate of 28% or less for 2009 entry (up from 25%).

During 2008, the decision was made to allow domestic applicants to apply for the Bachelor of Psychological Science from 2009 and the program is expected to be very popular amongst local applicants.

A Reference Group on SACE Issues, established to consider the implementation of the *futureSACE* and the implications for university selection, continued to meet throughout 2008. The CEC considered recommendations regarding the calculation of the Tertiary Entrance Rank; the Extended Learning Initiative (now named the Research Project); counting restrictions and precluded-subject combinations.

Approximately 20 postgraduate coursework programs were successfully run through a mid-year pilot of the *GradStart* application portal of the South Australian Tertiary Admissions Centre (SATAC). The Committee approved the use of *GradStart* for more than 200 postgraduate coursework programs from 2009 onwards.

Grants for Learning and Teaching Enhancements

The University Implementation Grants for Learning and Teaching Enhancements were offered for the first time in 2008. This funding scheme is aimed at improving learning and teaching outcomes at the University. The Committee received and reviewed a total of twenty-six applications and was generally impressed with the quality of the applications received. A total of \$237,000, part of the Learning and Teaching Performance Fund Grant awarded to the University by the Commonwealth in 2008, was allocated for projects that addressed the overarching theme of assessment and feedback. The successful projects ranged from the implementation of a program evaluation mechanism to the development of an integrated web based assignment submission, assessment and feedback system.



External Learning and Teaching Grants

Promoting Excellence Initiative

The Centre for Learning and Professional Development (CLPD) received a 'Promoting Excellence Initiative' grant of \$220,000 from the Australian Learning and Teaching Council. The grant enhances the University's ability to support academic and professional staff development by further building the culture of engagement in the scholarship of teaching, reflective practice and evidence-based teaching activity that improves student learning. The project involved information sessions and development workshops for University staff and incorporated a series of sessions by interstate visiting scholars.

Research Skills Development

A Research Skills Development website was established by the CLPD with funding from the Australian Learning and Teaching Council (ALTC). The Research Skills Development project is an example of the teaching-research nexus; it provides a practical way for undergraduate students to engage in research-informed teaching. The website provides details of the theoretical model and examples of discipline implementations of the model. Undergraduate students are able to engage in research-informed learning activities that more effectively prepare them for Honours and postgraduate research programs.

The University of Adelaide took on the lead role in the ALTC Priority Grant titled 'Develop and Implement a Pilot Program of External Peer Review of Teaching in four Australian Universities'. Project leader is Professor Geoffrey Crisp from the CLPD and partner institutions are the University of New South Wales, Griffith University and the University of Wollongong.

National Staff Awards

Australian Learning and Teaching Council Citations

Eight teaching staff from the University of Adelaide received Citations for Outstanding Contributions to Student Learning, awarded by the ALTC.

The eight staff are:

- Dr Karin Barovich — School of Earth and Environmental Sciences (Geology & Geophysics) — for outstanding contribution to the personal and academic development of first-year students in Geology, leading to successful transition from high school to university.
- Associate Professor Tom Burton — School of Humanities (English) — for successfully stimulating deep learning by bringing to the study of English both rigour and a boundless enthusiasm that challenge and inspire students to achieve.
- Dr Katrina Falkner — School of Computer Science — for enhancing learning and contributing to the successful transition of first-year Computer Science students through cooperative learning activities.
- Associate Professor Peter Devitt — School of Medicine; and Mr Edward Palmer — Centre for Learning and Professional Development — a team award for the development of innovative and comprehensive blended learning resources to provide medical students stimulating opportunities to develop their problem-solving and diagnostic skills.
- Associate Professor Simon Pyke — School of Chemistry and Physics — for enabling successful learning in the discipline of organic chemistry by providing a supportive, student-centred learning environment that fosters self-confidence and independent learning.
- Professor Hemanta Sarma — Australian School of Petroleum — for initiating students into the profession of Petroleum Engineering while interacting with them to secure their welfare as individuals and success as scholars.
- Associate Professor David Walker — School of Civil, Environmental & Mining Engineering — for providing a supportive learning environment while improving learning outcomes through the implementation of a successful self-paced learning strategy for engineering modelling and analysis.

Professor Mark Buntine, from the University's School of Chemistry and Physics, was named Science Educator of the Year at the State Government's 2008 Science Excellence Awards. Professor Buntine has established a community of practice among academics and students that makes a demonstrable difference to student learning in laboratories across the nation, with the development of the program, Advancing Chemistry by Enhancing Learning in the Laboratory.

Vice-Chancellor's Award for Excellence in University Teaching

In 2008, Associate Professor Anne Tonkin (School of Medicine) received the Vice-Chancellor's Award for Excellence in Teaching. The recipient is selected annually from the pool of prize-winners of the Stephen Cole the Elder Prizes, on the recommendation of the Committee for Learning and Teaching Awards.

Stephen Cole the Elder Prizes for Excellence in Teaching

The 2008 recipients of the Stephen Cole the Elder Prizes for Excellence in Teaching were:

Team Award:

- Margaret Castles, Anne Hewitt, Cornelia Koch, Andrew Ligertwood and Matthew Stubbs (Law School) — their work on a situational learning program and assessment motivated students and gave them a deep understanding of the ways in which legal theory is applied.

Teaching Awards:

- Dr Katrina Falkner (School of Computer Science) — a leader in her school and faculty in terms of education innovation and enthusiasm, she is determined to help every student acquire the skills and confidence to succeed in their chosen field of study.
- Associate Professor Elizabeth Koch OAM (Elder Conservatorium of Music) — an insightful educator who is able to instil confidence in young musicians while honing their musical skills. She is prepared to invest considerable time and effort to help students achieve their goals, nurturing their talents and aspirations.
- Associate Professor Anne Tonkin (Medicine Learning and Teaching Unit) — shares an exceptional rapport with students, has the ability to inspire and guide, and assists students in becoming confident and capable self-directed learners.

University of Adelaide Award for Excellence in Higher Degree by Research Supervision

- Associate Professor Martin Lambert (School of Civil, Environmental and Mining Engineering) — a supervisor of exceptional ability who provides postgraduate students with a sense of camaraderie and collegiality, a sense of purpose and achievement, and technical expertise.

Faculty Teaching Prizes

Dean's Certificate for Excellence in Teaching:

Engineering, Computer and Mathematical Sciences

Dr Cheryl Pope (School of Computer Science)

Associate Professor Martin Lambert (School of Civil, Environmental and Mining Engineering)

Health Sciences

Dr Eleanor Peirce and Dr Mario Ricci (School of Medical Sciences)

Mr Frank Donnelly (School of Population Health and Clinical Practice)

Mr Dane Horton (School of Molecular and Biomedical Sciences)

Dr Corinna Vandenheuvel (School of Medical Sciences)

Dr Paul Duggan (School of Paediatrics and Reproductive Health)

Associate Professor Anne Tonkin (School of Population Health and Clinical Practice)

Humanities and Social Sciences

Dr Benjamin McCann (Languages)

Associate Professor Angela (Kimmi) Coaldrake (Elder Conservatorium of Music)

Professions

Dr Linda Westphalen (School of Education)

Ms Margaret Castles, Ms Anne Hewitt, Ms Cornelia Koch, Mr Andrew Ligertwood, Mr Matthew Stubbs (Law School, team award)

Sciences

Dr Tak Kee (School of Physics and Chemistry)

University Medallists

Engineering, Computer and Mathematical Sciences	Samuel Nicholas COHEN — Honours B Maths & Computer Sciences Alex John FLINT — Honours B Maths & Computer Sciences Michelle HO — B Eng (Civil & Structural) and B Eng (Civil & Environmental) with Honours Qiang LIU — B Eng (Mechatronic) with Honours with B Maths & Computer Sciences Sam Karl POHLENZ — Honours B Maths & Computer Sciences George Forrest YOUNG — B Eng (Mechatronic) with Honours
Health Sciences	Rebecca Rosamaria FEO — Honours B Psychology Anne Marie KOERBER — Honours B Health Sciences Jason MICHAEL — BDS and Honours B Science in Dentistry Daniel YEOH — MBBS
Humanities and Social Sciences	Brendan Lim — Honours BMus (Performance) Rachael WHITE — Honours B Arts Jill Frances WOODLANDS — Honours B Environmental Studies
The Professions	Aidan John BROOKSBY — Honours B Commerce Michael HRUBY — Honours B Laws Brendan LIM — Honours B Laws Changchang LIU — Honours B Commerce
Sciences	Qingwen CHEN — Honours B Science Samuel Ryan EDWARDS — Honours B Science Samuel David STRANKS — Honours B Science

New Academic Programs

The following are academic programs at the undergraduate and postgraduate level that were approved in 2008 to address the needs of students and industry:

Program Name	Faculty
Bachelor of Engineering in Petroleum Engineering and Bachelor of Engineering in Mining Engineering	ECMS
Master of Applied Innovation and Entrepreneurship (Advanced)	ECMS
Master of Applied Innovation and Entrepreneurship	
Graduate Diploma in Innovation and Entrepreneurship	
Graduate Certificate in Innovation and Entrepreneurship	
Master of Applied Project Management (Advanced)	ECMS
Master of Computing and Innovation	ECMS
Master of Science and Technology Commercialisation (Advanced)	ECMS
Bachelor of Nursing (Honours)	Health Sc
Graduate Diploma in Addiction and Mental Health	Health Sc
Master of Health Economics and Policy	Health Sc
Master of Minimally Invasive Surgery	Health Sc
Master of Nurse Practitioner	Health Sc
Master of Arts (Studies in Art History) and Master of Arts (Curatorial and Museum Studies)	HUMSS
Master of Music (Performance Studies)	HUMSS
Graduate Diploma in Wealth Management	Professions
Master of Accounting	Professions
Master of Accounting and Marketing	Professions
Master of Accounting and Performance Management	Professions
Master of Planning (Urban Design) with Master of Landscape Architecture	Professions
Bachelor of Science (Mineral Geoscience)	Sciences
Master of Sustainability (Advanced) Master of Sustainability Graduate Diploma in Sustainability Graduate Certificate in Sustainability	Sciences



Professional and Community Education

Professional and Continuing Education (PCE) achieved significant growth during 2008 with a total of 5,200 students attending a broad range of community and professional education programs offered by the unit.

PCE's Community Education programs provide the South Australian community with access to, and a positive experience of, the University of Adelaide. Community Education programs include the Community Language and Year 12 Revision programs. Over 900 people took the opportunity to learn one or more of the 12 languages taught at PCE throughout the year. Chinese, Spanish and Italian were the most popular languages offered. Over 790 Year 11 and Year 12 students attended the Year 12 Revision

courses, which are offered during each school holiday period. These courses provide this key client group with a positive learning experience studying at the University of Adelaide. Twenty-four mature age applicants attended the Preparation for Tertiary Study courses in order to better prepare themselves for taking the Special Tertiary Admissions Test (STAT) and improve their chances of admission to the University of Adelaide.

A total of 1,200 students attended PCE's professional development programs in 2008, an increase of over 15%. PCE has also delivered approximately 80 individually tailored training courses to a number of clients (government, corporate, not-for-profit, universities, small business and professional associations).



Research and Research Training

The University of Adelaide aspires to be one of Australia's top universities by any measure, and the quality of research is an essential component of the University's overall success. It affects every aspect of the University's activities: directly through research revenue, commercial engagement, publications and other outcomes; indirectly through student recruitment, community service, employment outcomes, the ability to attract high calibre staff, and through many other widely accepted indicators of excellence.

Even though the University is not large, the quality of its research is such that it continues to attract one of the highest levels of per capita research funding in Australia. Funded projects include many examples of pure and applied research, as well as collaborative ventures with government bodies, industry, other research institutions and the community in general.

Research

Research Policy and Management

The primary goal for Research and Research Training in the University Strategic Plan 2008–2012 states that:

“The University will actively support the development of world-class research in an increasingly competitive environment, both nationally and internationally.”

In order to promote this goal, one of the major initiatives undertaken during the year was the implementation of a new research investment strategy, focusing on selected, high quality, strategically significant research centres and institutes. The overarching objective is to provide an investment framework that supports research income growth, and links the University's funding to high-quality research outcomes. A rigorous and competitive selection process was conducted to identify outstanding, strategic, large-scale research activities with the potential to leverage significant financial, government and public support, to drive and deliver key national and strategic objectives, and to ensure maximum exposure and take-up of research outcomes.

The Australian Government announced its plans for a new external research quality and evaluation system to replace the Research Quality Framework. Throughout the year the Excellence in Research for Australia (ERA) initiative was progressively developed by the Australian Research Council (ARC) in conjunction with the Department of Innovation, Industry, Science and Research (DIISR). The ERA uses research metrics and peer review panels, and is intended to be a less labour-intensive system than the RQF. Its stated aim is to identify excellence across the full spectrum of research activity, compare Australia's research effort against

international benchmarks, create incentives to improve the quality of research, and identify emerging research areas and opportunities for further development. Evaluations will be conducted on eight main disciplines, with Physical, Chemical and Earth Sciences the first discipline to be evaluated in 2009.

In July 2008, Professor Mike Brooks was appointed to the position of Deputy Vice-Chancellor and Vice-President (Research). Professor Brooks is a leading international researcher in computer vision and image analysis. His work has seen wide commercial use in the security and defence industries and has resulted in international awards. He has published numerous influential papers in the field of computer vision, image analysis and surveillance and has won many ARC Discovery grants for his research. Professor Brooks is a Fellow of both the Australian Academy of Technological Sciences and Engineering and the Australian Computer Society, Co-investigator with the ARC Research Network for a Secure Australia, Associate Editor of the *International Journal of Computer Vision*, and serves on the board of National ICT Australia.

At the time of his appointment, Professor Brooks held the position of Pro Vice-Chancellor (Research Strategy), following on from his successful role as Chair of the Research Quality Framework Board, where he played a major part in auditing the University's research capability. He is also a former Head of the School of Computer Science, where he holds the Chair in Artificial Intelligence.

Professor Richard Russell AM continued in the dual role of Pro Vice-Chancellor (Research Operations) and Dean of Graduate Studies.

Research Funding Success

The University attracts research income from a wide variety of sources, although the major contributors remain Commonwealth Government agencies. The University of Adelaide and its research partners continue to receive well over two-thirds of the total funding awarded to South Australia from the ARC and the National Health and Medical Research Council (NHMRC). This excellent result highlights the strong nature of the University's continuing expertise and position as the premier research university in the State, as well as its productive, collaborative relationships with other South Australian organisations in government and industry. Funding supports a wide array of projects including research in reproductive medicine, children's health, minerals exploration, plant functional genomics, environmental change and sustainability, and biomedical sciences.

The NHMRC provided the University of Adelaide and its affiliated research partners with funding for 46 new Project Grants, as well as a number of fellowships, Development Grants, an Equipment Grant and a substantial Capacity Building Grant. This funding will support research projects into cancer, obesity, transplants, wound healing, genetic disease, reproduction, diabetes, oral health, asthma, stroke, drugs, heart disease, and early childhood development.

Examples of the funded projects and their research team leaders include:

- Professor Caroline Crowther, School of Paediatrics and Reproductive Health, won a major grant for a study to determine which type of antenatal steroid given prior to pre-term birth is better for optimising child health at two years of age.
- Associate Professor Christine Feinle-Bisset, School of Medicine, for work on gastrointestinal adaptation-weight loss, and the effects of fatty and lauric acid on health and obesity.
- Associate Professor Robert Fitridge, School of Medicine, won funding for a study looking at endovascular aortic aneurysm repair.
- Dr Peter Coyle, School of Molecular and Biomedical Science/IMVS, will study the impact of alcohol exposure on zinc deficiency in the fetus, which is a major cause of cognitive problems in children.
- Professor Konrad Jamrozik, School of Population Health and Clinical Practice, won a major Capacity Building Grant worth over \$2 million for integrated decision-making for improving health services.

The funded projects involve researchers from research partners at institutions including the Women's and Children's Hospital, the Royal Adelaide Hospital, the Queen Elizabeth Hospital, the Women's and Children's Health Research Institute, the Hanson Institute and the Institute of Medical and Veterinary Science. The University of Adelaide continues to place high priority on its relationship with affiliate institutions and staff, the mutual benefits of which are evident in successful collaborative research projects and other activities.

The 25 ARC-funded Discovery Projects won by University researchers include groundbreaking research in the areas of climate change, communications, genetics, reproduction, obesity, agriculture, history and mental illness. Some examples are:

- Associate Professor Samar Akkach, School of Architecture, Landscape Design, will conduct a project designed to contribute to expanding Australia's knowledge of Islam.
- Dr Russell Brickworth and Dr Karin Nordstrum, School of Molecular and Biomedical Sciences, won funding in the area of computational neuroscience to understand and model insect motion vision, with possible applications in miniature unmanned vehicles and collision avoidance detectors in defence and civilian roles.
- Dr Philip Gerrans and Dr Jakob Hohwy, School of Humanities, will investigate a model of the mind that explains the role of emotions in normal cognition and affective disorder, with a focus on increased understanding of depression.
- Professor Derek Leinweber *et al*, School of Chemistry and Physics, received funding to advance significantly our knowledge of the subatomic structure of the universe through fundamental and computational science research.
- Dr Petra Marschner *et al*, School of Earth and Environmental Sciences, were awarded funding to investigate how microbial activity and nutrient cycling in saline soils will be affected by drought and sporadic summer rainfall.

Continuing a strong tradition of developing research outcomes in partnership with industry, the University also won 16 new ARC Linkage Grants over the two funding rounds announced in 2008, examples of which are:

- Professor Graeme Hugo *et al*, in collaboration with the Queen Elizabeth Hospital Research Foundation, Workcover SA, SA Health and the Council on the Ageing, won over \$641,000 for research into obesity and work patterns in the Baby Boomer generation.
- Professor Andy Austin *et al*, School of Earth and Environmental Sciences, in partnership with the Tasmanian Department of Primary Industries, Water SA and Zoos SA, won \$168,000 to study molecular evolution in Tasmanian devils. The study will provide critical genetic data and tools to monitor and prioritise conservation strategies aimed at preventing extinction, including insurance populations and disease suppression.
- A research team led by Associate Professor Jonathan Karnon, School of Population Health and Clinical Practice, was awarded \$300,000 to investigate more effective ways to allocate public funds for government services. This is a collaborative project between the University of Adelaide and the South Australian Government to evaluate the long-term costs and benefits of community-based initiatives.

The University of Adelaide was also successful in winning a prestigious ARC Federation Fellowship for Professor Tanya Monro, Chair of Photonics in the School of Chemistry and Physics — the University's fourth such fellowship since the program commenced, and one of only 14 fellowships awarded across the country for 2008. The Federation Fellowship program allows researchers of international renown to make a significant contribution to the generation of knowledge and the Australian innovation system. In her relatively short career, Professor Monro has made important and pioneering advances in fundamental and applied aspects of microstructure optical fibres and photonics that have led to a number of 'world firsts'. For example, her research has led to the realisation of a new family of optical materials: the first non-silica holey fibres and the first all-glass microstructured fibres. These fibres have unprecedented optical nonlinearities and properties that have only just begun to be exploited. Professor Monro has driven the establishment and success of the University's world-class, interdisciplinary Centre of Expertise in Photonics, the activities of which span the disciplines of Physics, Mathematics, Chemistry and the Biological Sciences.

Professor Wayne Meyer
Photo by Jennie Groom

Dr Alex Johnson
Photo by Cobi Smith

The University was also awarded significant funding from the Grains Research and Development Corporation (GRDC) and the Grape and Wine Research Development Corporation (GWRDC) for research projects and programs that include the following:

- Professor Stephen Tyerman, School of Agriculture, Food and Wine, was awarded funding from the GWRDC to support the research project 'Integrating the carbon and water economies of grapevine for optimal management in challenging environments'.
- Associate Professor Gurjeet Gill et al, School of Agriculture, Food and Wine, received funding from the GRDC for research on the identification of emerging weeds in southern and western regions, factors contributing to their increasing abundance, and the development and promotion of adoption practices for effective management.



As already mentioned, researchers at the University successfully win funding from a considerable variety of sources in the government, industry and community sectors. The list is too long to reproduce here, but the following give a flavour of the types of projects funded and the sources of that funding:

- The SA Premier's Science and Research Fund provided funding worth almost \$1.3 million to researchers at the University for two new projects:

Professor Wayne Meyer will lead a project on 'Climate Change, Communities and Environment: Building research capability to identify climate change vulnerability and adaptation options for South Australian landscapes'; and

Professor Nesimi Ertugrul will conduct research into the 'Development of a Low-cost High-efficiency Small-scale Wind Turbine System for Standalone and Grid-connected Applications'.

- Associate Professor Megan Lewis, Dr Nick Murphy, Dr Jennie Fluin and Associate Professor Graham Heinson, School of Earth and Environmental Science, were awarded \$1,490,000 to conduct research on mound springs in the arid zone of South Australia. The research is funded by the National Water Initiative and forms an integral part of a larger, \$8-million project entitled 'Allocating Water and Maintaining Springs in the Great Artesian Basin' which is administered by the South Australian Arid Lands National Resource Management Board.

- Dr Alex Johnson, based in the Australian Centre for Plant Functional Genomics, was awarded nearly \$300,000 to work with the Bill Gates-funded HarvestPlus Challenge Program to increase iron content in rice and other cereal grains.



Collins Class submarine HMAS Waller
Photo by ABPH Bill Louys, courtesy of the Department of Defence

- Dr Carl Howard and his research team in the School of Mechanical Engineering won significant funding, under the Department of Defence's Capability and Technology Demonstrator Program, to investigate a new stealth solution for the Collins Class submarines. This work builds on the expertise within the University's Acoustics, Vibration and Control group, which has been researching solutions for industry for more than 20 years. It also builds on the University's longstanding research partnership with the Defence Science and Technology Organisation (DSTO).
- Dr David Ogunniyi, Professor James Paton and Dr Layla Mahdi, School of Molecular and Biomedical Science, were awarded funding by the Meningitis Research Foundation (United Kingdom) for the project 'Characterization and vaccine potential of pneumococcal virulence factors expressed during meningitis'.
- The National Heart Foundation awarded seven grants-in-aid to University researchers, which will attract almost \$900,000 in funding to the University over the next 2 years.

Research Infrastructure

Early in the year, the South Australian Regional Facility for Microscopy and Microanalysis (SARF) was launched as part of a national network of microscopy and microanalysis research infrastructure and expertise. The launch included SARF's first new flagship instrument, an Ultra High Resolution Dual Beam Instrument. The \$3.5 million combination focused ion beam scanning electronic microscope is the only one of its kind installed in the southern hemisphere, and gives researchers the ability to look at the smallest particles making up the structure of materials. The facility is designed to help researchers perform cutting-edge research in a broad range of disciplines with application across industries including defence, health, biotechnology, mining, manufacturing and pharmaceuticals. A beneficiary of the Commonwealth Government's National Collaborative Research Infrastructure Strategy (NCRIS), SARF is a collaboration between South Australia's three universities.

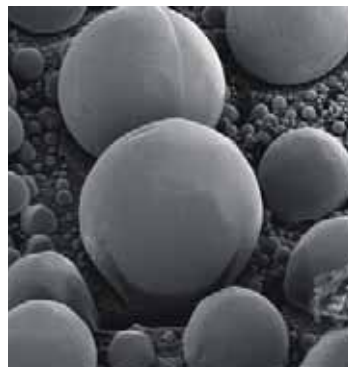
Construction began in 2008 on another NCRIS-supported facility worth \$26 million, a 'super greenhouse' known as the Plant Accelerator. Situated at the Waite Campus,

it will be the largest and most sophisticated public facility of its type in the world, helping to facilitate cutting-edge international plant research and its rapid application to the agriculture and bio-plant industries. The Accelerator is the national flagship of the new Australian Plant Phenomics Facility, and is jointly funded by an alliance of the Commonwealth, the South Australian Government and the University of Adelaide. It will feature a series of 50 high-tech glasshouses and laboratories that will house over 1km of conveyor systems, automatically delivering plants to state-of-the-art imaging, robotic and computing equipment. This will allow continuous measurements of the physical attributes (the phenotype) of up to 160,000 plants a year. The accelerator mode of this facility will come from its ability to identify more rapidly those varieties that will be successful, and therefore reduce the time to market. Once complete, this will be a world-class facility that will drive research to assist in improving Australia's agriculture export industry.

Late in the year, the University was also awarded further NCRIS funding as part of the Terrestrial Ecosystems Research Network (TERN).

The purpose of TERN is to establish the necessary cooperative and data frameworks for a national collaborative approach to ecosystem infrastructure and research. As part of the national network, led by the University of Queensland, NCRIS provided \$4.5 million for an Eco-Informatics capability, which is to be operated by the University of Adelaide and the South Australian Department for Environment and Heritage. This activity will build upon a range of investments made by governments at all levels and aims to provide, through a distributed model, a single framework for data and information management and discovery for Australian ecosystems data.

The University was also successful with a Higher Education Endowment Fund bid, winning \$28.8 million for capital works to house an Institute for Photonics and Advanced Sensing. The funding will enable specialised laboratories to be built at the University's North Terrace Campus. The Institute will be led by Federation Fellow Professor Tanya Monro and aims to become the international leader in developing new technologies that underpin health, the environment, industrial processes and defence systems. This will be



Tin metal which has been evaporated onto a carbon substrate, as seen by the super high-powered electron microscope
Photo courtesy of Adelaide Microscopy



Professor Tanya Monro
Photo by Jennie Groom

done by bringing together leading research in optical fibres, lasers, luminescence, chemistry, proteomics and virology. These facilities will provide the University with the opportunity to become a world leader in photonics and advanced sensing technologies, with great potential for social and economic benefits for the State and the nation. Additional funding is being provided by the University and partner institutions.

Another source of Commonwealth Government support for research infrastructure is the Linkage Infrastructure, Equipment and Facilities Scheme (LIEF). In 2008 the University was awarded funding for new facilities to support breakthroughs in research in areas such as cancer, neurological disease, nanotechnology and pharmaceuticals. The new facilities included a High-resolution and Ion-mobility Mass Spectrometry Facility; an Ultrafast Dynamics Measurement Facility for the Physical, Biochemical, and Materials Sciences; and a Facility for Small and Large Molecule X-Ray Diffraction Structure Determination.

Publications

Institutional data on publications by staff, students and affiliates of the University are collated annually to comply with the requirements of the Department of Education, Employment and Workplace Relations (DEEWR) Higher Education Research Data Collection (HERDC). The data are used by the Commonwealth Government in the formula for allocating funding under the Institutional Grants Scheme and the Research Training Scheme.

This year a total of 2,729 publications contributed to the HERDC and resulted in the total unweighted score of 1,797.3 for the University. This is 11.8% greater than the unweighted score reported for 2006 publications (Table 1). The University of Adelaide is continuing to improve its relative performance in weighted publications in comparison to the other Group of Eight universities.

Research Commercialisation

The University is a great resource for the community and government, business and industry are increasingly tapping into this hub of expertise. With a strong focus on multidisciplinary and collaborative research, University of Adelaide researchers identify and address the needs of their partners in industry, government and the wider community.

The University's commercial development company, Adelaide Research & Innovation Pty Ltd (ARI), provides a focal point for collaboration between the University and its partners. The approach used is to match client needs and business opportunities with the resources and expertise of the University, enabling organisations to develop competitive advantage, expanding the University's research base and translating research into real benefits for the community.

2008 was another record year of success for the University's commercial portfolio, with researchers providing consistent year-on-year growth in the number of government and industry-funded projects. ARI enabled research contracts worth more than \$24 million.

Public health and environmental research continue to be consistently strong areas of research capability for the University, along with emerging strengths in areas such as resources and social innovation. The University's largest customers are state and federal government departments and agencies.

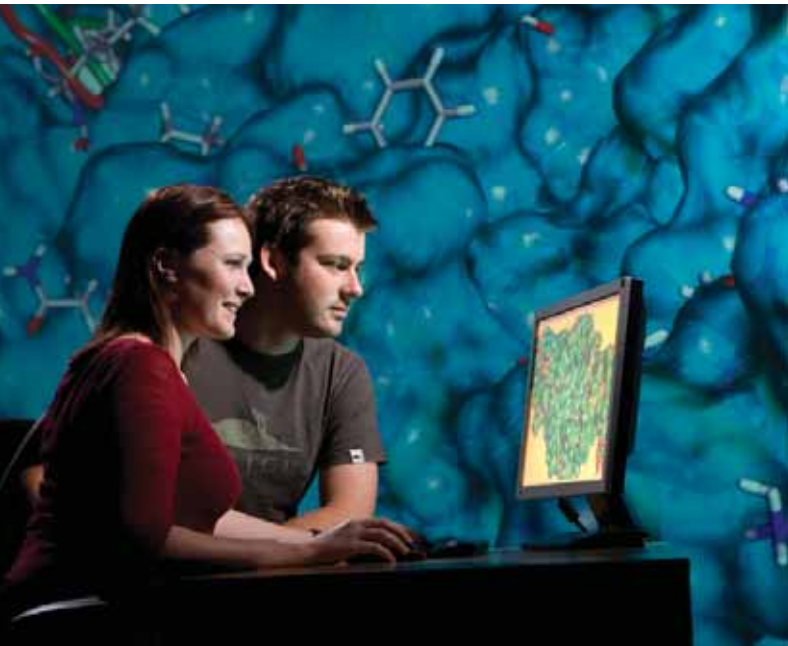
University-generated technologies and products continue to provide returns which are used to fund further research. The University has produced more than 30 wheat and 11 barley varieties with commercial partners such as ABB Grain Ltd. ARI is promoting and negotiating a range of new opportunities with commercial partners in relation to reproductive technology, software packages and other innovations.

In a significant coup for South Australian innovation, ARI was instrumental in the development and launch of the new Trans Tasman Commercialisation Fund. This collaborative venture aims to capture university research and take it towards commercialisation, creating successful spin-out companies that in turn create economic opportunities, competitiveness and growth, regionally

Table 1: University of Adelaide Publications: Unweighted Scores, 1998-2007

Year	Books (A1)	Book Chapters (B1)	Refereed Journal Articles (C1)	Refereed Conference Papers (E1)	TOTAL
1998	13.1	98.9	858.9	183.9	1154.7
1999	12.8	104.3	821.4	156.5	1095.1
2000	9.5	112.4	922.0	122.3	1166.2
2001	16.0	91.2	1038.5	173.6	1320.8
2002	13.5	78.6	1010.2	158.9	1261.2
2003	16.0	95.2	979.9	208.6	1299.7
2004	13.0	104.3	1086.2	271.5	1475.0
2005	15.5	112.9	1053.8	305.9	1488.1
2006	16.7	107.8	1137.1	345.9	1607.4
2007	27.5	145.4	1246.4	378.0	1797.3

Source: University of Adelaide Research Branch



and nationally. Backed by the Western Australian superannuation fund, Westscheme, the \$30-million fund provides a new source of pre-seed capital to support agreed projects from inception to the point where they can be commercialised. The participating institutions include the University of Auckland, Monash University, Flinders University, the University of South Australia and the University of Adelaide, with support from the State Government.

The Trans Tasman Commercialisation Fund complements the Commercial Accelerator Scheme, a program launched by ARI in 2007. This scheme provides an opportunity to support researchers with funding up to \$250,000 so that they can establish proof-of-concept or reach a development milestone necessary to attract a commercial partner. One of the projects supported in 2008 is directed at the development of a new class of antibiotics to combat the spread of multiple drug-resistant strains.

The annual Adelaide Research & Innovation Impact Awards provided an opportunity to celebrate the University's research and development effects on society, and to recognise academic entrepreneurs, as

well as encouraging more collaboration between the State's industry, education and research sectors. Some \$30,000 of prize money was on offer to the most successful partnerships between academics and industry, and research from throughout the University was profiled.

Associate Professor Mark Carroll from the Elder Conservatorium of Music was a major award winner for his work on the history of Ballets Russes tours and their influence on Australian high art and music. The two other major award winners were the Pain and Anaesthesia Research Clinic and the Data Management and Analysis Centre.

Impact Accolades were awarded to the following people for their significant contribution to applied research: Professor Michael Rumsewicz (Engineering, Computer and Mathematical Sciences); Associate Professor Bruce Ainsworth (Australian School of Petroleum); Professor Gary Wittert (School of Medicine); and Associate Professor John Spoehr (Australian Institute for Social Research). The award winners are great examples of partnerships resulting in knowledge transfer and real-world application of research.

Research Training and Scholarships

The University is proud of the quality research training and experience it provides to its postgraduate research students. In 2008, the University completed 300 research-intensive postgraduate qualifications, including 268 research PhDs.

Student feedback indicators demonstrate a high level of student satisfaction with their graduate experience at the University of Adelaide. The Adelaide Graduate Centre is constantly evolving to meet the changing needs of students and their supervisors, playing a vital role in ensuring that candidatures are well administered and students are supported at every step of their research training.

One of the fundamental research training aims of the University's Strategic Plan is to increase the number and proportion of domestic and international higher degree by research students. One important way in which this is achieved is through the provision of scholarships. In 2008, the University administered 64 commencing Australian Postgraduate Awards. In addition to this prestigious national scholarship program, the University funds its own scholarships scheme, allocating 188 new Divisional research scholarships.

An initiative to provide tuition fee waivers to international students completing a four-year undergraduate degree or equivalent (with First Class

Honours), or a Masters degree at the University of Adelaide, resulted in an additional six students accepting places.

In late 2007 an agreement completed between the University and the China Scholarship Council was signed by the Pro Vice-Chancellor (International). This joint initiative provides research training for qualified postgraduate research students and early career postdoctoral research scholars from Chinese universities. The first set of 10 tuition-fee scholarships was awarded in 2008 to applicants from partner universities in China. Recipients are undertaking research programs in Agriculture and Animal Science, Pharmacology, Plant and Food Science, Dentistry, Medicine, Mechanical Engineering, Civil and Environmental Engineering and Entrepreneurship.

The University also allocated a number of international postgraduate research scholarships, funded by the Commonwealth Government and the University. Twenty-three scholarships were made available to cover tuition fees and a living allowance for up to 3½ years, with an additional 15 scholarships covering tuition fees only. The successful recipients come from a diverse range of countries including Israel, Germany, Brazil, Canada, Myanmar and South Africa.

Scholarships are also funded by several external bodies. The University was awarded

University of Adelaide Law graduate Benedict Coxon at Government House shortly after his announcement as South Australian Rhodes Scholar for 2009
Photo by David Ellis

Research Collaboration

six NHMRC Postgraduate Scholarships, up from three awarded in 2007 and the best outcome so far achieved, according to NHMRC statistics dating back to 1996.

The University celebrated its 102nd Rhodes Scholar, Benedict Coxon. Mr Coxon completed an Honours Degree of Bachelor of Laws (First Class) in 2008. The scholarship will enable him to study for a D.Phil (PhD) at the University of Oxford, concentrating on the field of statutory interpretation.

Another graduate, Mr James Daniell, was awarded a General Sir John Monash Award in 2008. Mr Daniell completed a Bachelor of Engineering (Civil and Structural) degree with First Class Honours and a Bachelor of Science degree in 2006. He will be undertaking a PhD at the University of Karlsruhe, Germany. His research will be conducted on the vulnerability and risk assessment of cities against natural and human-made disasters, incorporating social, environmental, infrastructural and economic impacts.

Two graduates won Commonwealth Scholarship and Fellowship Awards to study in the United Kingdom. Mr Brendan Lim and Ms Stephanie Wilkins will both be undertaking Taught Masters courses in Law at the University of Oxford.

Members of the University regularly collaborate with industry, government, other research institutions and the general community in many and varied ways. The following section provides just a few examples of activity in 2008.

The University of Adelaide and Qantas Airways signed a Memorandum of Understanding that aims to provide benefits to both organisations through collaboration on engineering teaching and research. The alliance provides even greater opportunities for students to receive a quality industry-relevant education in their chosen areas of study, as well as strengthening the industry relevance of our research programs. It is an outstanding example of universities and industry working together to identify and achieve common goals.

November saw the launch of the Wine Innovation Cluster and the opening of its new \$28-million building at the Waite Campus. The Cluster brings together the resources of the Australian Wine Research Institute, CSIRO Plant Industry, private research agency Provisor Pty Ltd, the South Australian Research and Development Institute (SARDI) and the University of Adelaide. The Cluster is a collaborative initiative that will assist Australia to become the world's leader in wine science, with research spanning

such fields as microbiology, chemistry, sensory science, engineering, oenology and viticulture. The investment upholds the Waite campus as a leading wine centre, and will help to ensure our wine industry remains competitive and sustainable.

The University of Adelaide became part of a new Centre for Intergenerational Health. This is an important initiative that includes Flinders University and the University of South Australia, the Department of Health and the Department of Further Education and Training. The Centre brings together researchers from diverse research fields spanning fundamental bio-medical and clinical research, intervention and evaluation research, population studies, strategic research, the social and environmental determinants of health, and multidisciplinary research that will inform future decision making and health and wellbeing outcomes.



Awards and recognition

Throughout 2008 numerous University researchers and affiliates were recognised by external bodies for their outstanding commitment and hard work. The following provide some examples of the high regard in which the University's staff and students are held:

- A number of the University's past and present researchers were recognised in the 2008 Queen's Birthday Honours, including Professor Chris Burrell AO for service to medicine, and Associate Professor David Paton AM for service to conservation and the environment.
 - The 2008 South Australian of the Year Awards saw recognition for four people associated with the University. Paralympic swimmer Matthew Cowdrey OAM, who is studying Media and Law, was named 2008 Young South Australian of the Year. Professor Richard Ruffin, School of Medicine, claimed the Health Award. Professor Mike Young, Research Chair of Water Economics and Management, won the Environment Award. Professor John Hopwood, an affiliate professor with the School of Paediatrics and Reproductive Health, received the Science Award.
 - Dr Tamath Rainsford, (School of Electrical and Electronic Engineering) was named the overall winner of the South Australian Young Tall Poppy Science Award. Her research is about applying mathematics to various real-world problems, especially those that are medical or biological in nature. The University also saw four other Young Tall Poppy winners, selected on the basis of research achievement and passion for communicating their science: Associate Professor Corey Bradshaw, Dr Catherine Gibson, Dr Galen Halverson and Dr Megan Mitchell.
 - In the 2008 SA Science Excellence Awards, Professor Mark Buntine, School of Chemistry and Physics, was named Science Educator of the Year. The title of SA Scientist of the Year went to Professor John Hopwood, Head of SA Pathology's Lysosomal Diseases Research Unit based at the Women's and Children's Hospital, and an affiliate of the University. Another affiliate, Associate Professor John Mulley, won the Excellence in Research for Public Good Benefit award. The University of Adelaide is a partner in Marine Innovation SA, which won the Constellation SA Award for Excellence in Collaborative Research.
- Dr Kate Selway, a postdoctoral research associate with the School of Earth and Environmental Sciences, won the 2008 SA Young Achiever of the Year award. She is working on a project between the University of Adelaide, BHP Billiton and Teck Cominco in the Olympic Dam region, carrying out large scale magnetotelluric (electromagnetic) surveys which provide 3D images of the earth to depths of about 70 kilometres. Dr Selway also won the Science and Technology Award.
- Professor Tanya Monro, Director of the Centre of Expertise in Photonics, won the Malcolm McIntosh Prize for Physical Scientist of the Year, one of the Prime Minister's science prizes. Professor Monro has demonstrated a remarkable ability to carry out world-class research that has important outcomes and applications in science, industry and defence. Her research targets problems both in fundamental and applied physics as well as in other fields such as proteomics, virology and structural health monitoring.
 - Professor Garrett Cullity won the 2008 Australian Museum Eureka Prize for Ethics Research, which recognises excellence and originality in ethics that is directly applicable to our lives. Professor Cullity's book, *The Moral Demands of Affluence*, examines what has been called "the great moral challenge of our time" — whether and to what extent well-to-do individuals are obliged to help the vast numbers of poor people around the world.
 - Dr Jason Able, School of Agriculture, Food and Wine, was the recipient of the Peter Goldacre Award from the Australian Society of Plant Scientists. The Award is given to a plant scientist who is less than 10 years out of their PhD and whose work is recognised as important and of high merit.
 - Dr Pichu Rengasamy, from the School of Earth and Environmental Sciences, was awarded the prestigious Prescott Medal from the Australian Soil Science Society, for his outstanding contribution to soil science and sodicity research in Australia.
 - Dr Ron Smernik, a QEII Fellow in the School of Earth and Environmental Sciences, was awarded the Frederick White Prize of the Australian Academy of Science. The prize is awarded biennially to an Australian scientist under the age of 40 whose research makes a significant contribution to community interests, to rural or industrial progress or to the understanding of natural phenomena.
 - Professor Robin Graham, Affiliate Professor in the School of Agriculture, Food and Wine, was awarded the CM Donald Medal by the Australian Society of Agronomy. The medal recognises the lifetime achievement of an Australian agricultural scientist.
 - Professor Charles Pearce, Elder Professor of Mathematics, was presented with the Ren Potts Medal of the Australian Society for Operations Research for his outstanding contributions to Operations Research in Australia.
 - Dr Zbigniew Kruk, his research team and research partners won the Business Higher Education Round Table Award for the Best Research and Development Collaboration, for a value-adding project which aims to develop healthy lamb meat products with attractive flavours via dietary manipulations.

Research Centres and Research Institutes

In 2008 approval was given for a number of new research institutes and centres in the areas of health, defence and agriculture, all of which are conducting cutting-edge research with collaborative partners.

The Robinson Institute was established in October 2008, focusing on reproductive health, stem cell research and health across generations. Named after renowned obstetrician Professor Jeffrey Robinson CBE, Emeritus Professor at the University of Adelaide, the Robinson Institute encompasses the University's Research Centre for Reproductive Health, the Centre for Stem Cell Research and the Centre for Early Origins of Health and Disease, in a collaborative venture with the Lyell McEwin, Women's and Children's, Royal Adelaide and Queen Elizabeth hospitals, and the Hanson Institute at the Institute of Medical and Veterinary Science. The Institute is led by University of Adelaide reproductive medicine expert Professor Robert Norman, and involves more than 200 research staff and students with expertise ranging from epidemiology through to molecular biology and genetics. The Robinson Institute builds on the University's international reputation in reproductive health stemming from world-leading research over the past 50 years, which has increased understanding of human and animal reproduction and produced new infertility treatments and genetic diagnosis of embryos.

The Institute for Mineral and Energy Resources was formally announced by the Premier of South Australia, the Hon. Mike Rann MP, on 23 May 2008. The Institute builds on the University's established education and research profile in petroleum engineering, mining engineering, petroleum and minerals geoscience, and on its internationally significant, interdisciplinary capability in geothermal

energy. This capability will enable the Institute to address the complex challenges faced by the mineral and energy resources sectors. The Institute will seek national and international partnerships and alliances that complement its expertise, with the intention of bringing together the world's best researchers across the spectrum of the Institute's activities. It aims to establish the State as a world leader in the provision of research and education for the minerals and energy resources industries. The first of the international partnerships has been established with the University of Nottingham in the United Kingdom, which will bring to the Institute leading European research groups in energy and mining engineering. The Institute is led by Professor Richard Hillis of the Australian School of Petroleum.

The Environment Institute was approved in late 2008. Research undertaken within the Institute will deliver expertise and understanding to underpin a step change improvement in the management of natural resources such as water, soil, land and native flora and fauna, particularly under changing climate and economic conditions. Under the Director, Professor Mike Young, the Institute brings together leading research groups at the University of Adelaide in the field of science, engineering and economics relating to the management and use of natural resources and infrastructure. It combines the research strengths of the Research Institute for Climate Change and Sustainability, the Australian Centre of Evolutionary Biology and Biodiversity, the Australian Centre for Ancient DNA, and the Water Research Cluster. The Institute provides a bridge between great research and sound practice, linking researchers with government and industry to ensure that research is focused on issues of state and national importance.



Three other Research Institutes were approved at the end of 2008, to be established in 2009: The Waite Research Institute; the Adelaide Cancer Research Institute; and the Institute for Photonics and Advanced Sensing.

The Centre of Clinical Excellence in Nutritional Physiology, Interventions and Outcomes (CCRE) was officially launched in early March by the Minister for Health, the Hon. John Hill MP. The Centre, led by Professor Michael Horowitz, as part of the School of Medicine, consists of experts from the Faculty of Health Sciences, the Royal Adelaide Hospital, IMVS, Hanson Institute, and CSIRO Human Nutrition. Research at the CCRE is focused on four main areas: diabetes, obesity, nutrition in critical illness, and nutrition in the elderly. The Centre is supported by a \$2-million NHMRC grant for five years, and comprises 10 chief investigators, associate investigators and postdoctoral students.

The University of Adelaide and the University of South Australia have established the Defence Systems Innovation Centre (DSIC), a defence community-focused centre of excellence in systems integration. The new centre is an advanced engineering organisation, whose primary goal is the delivery of leading-edge expertise and advice to the defence community. This will be achieved through joint projects, contract-based studies and consultancy, postgraduate and undergraduate education programs, and a research program focused on collaborative projects of direct relevance to the defence community.

The Centre for Stem Cell Research, focusing on turning novel basic research into potential life-saving treatments and cures for serious conditions and diseases, draws together almost 100 research scientists

and 80 research students from 18 research groups based at the University of Adelaide, the Women's and Children's Hospital, the Institute of Medical and Veterinary Sciences (IMVS), the Hanson Institute and the Queen Elizabeth Hospital. The members of the Centre undertake internationally recognised and awarded research on areas such as the isolation of adult and cord blood stem cells, clinical applications including potential cures for stroke damage and cardiac repair, and novel approaches to diseases such as cystic fibrosis and leukaemia.

The Food Plus Research Centre brings together researchers from the science and agricultural disciplines with health professionals, with the aim of rapidly growing research to support the production and testing of healthy foods. Modern agriculture must address the nutrient imbalances that can impair healthy development and ageing. Agriculture and food manufacture occur in different business environments and are driven by separate business considerations. FoodPlus is designed to be a vehicle for a two-way health linkage between the two environments. The chief researchers associated with FoodPlus have extensive connections with the international food industry.

The Mosaic Fertilizer Technology Research Centre, based at the Waite Campus, brings together world-leading scientists and facilities. The new centre was established by the University in a joint commercial venture with one of the world's largest fertiliser companies, the United States-based Mosaic Fertilizer LLC. The Centre will develop and evaluate more efficient fertiliser products that will be marketed around the world, enabling farmers to produce higher yields in crops to meet ever-increasing demand.



Commonwealth-Funded Research Centres

National Research Centres

The University of Adelaide is home to, or a significant participant in the following National Research Centres funded by the Commonwealth Government and research organisations:

Australian Research Council (ARC)

- Special Research Centre for the Molecular Genetics of Development
- Special Research Centre for the Subatomic Structure of Matter

ARC Research Network

- Environmental Futures Network

ARC-NHMRC Research Network

- Genes and Environment in Development

National Biotechnology Centre of Excellence Program

- Australian Centre for Stem Cell Research (partner)

National Health and Medical Research Council

- Centre of Clinical Research Excellence in Nutritional Physiology, Interventions and Outcomes
- Program for Early Origins of Adult Disease
- Program in Reproductive Health for Women: From Egg to Embryo
- Program for Understanding the Human Genome: Molecular Mechanisms of Genetic Disease (affiliate)
- Program for Leukocyte and Endothelial Cell Biology (affiliate)
- Program for the Molecular Basis of Bacterial Infectious Diseases (partner)
- Program for a Practical Model of Pig Islet Xenotransplantation (partner)
- Program for Post-traumatic Mental Health: Enhancing Resilience and Recovery (partner)



Cooperative Research Centres

The University is also involved in several Cooperative Research Centres (CRC), a Commonwealth Government program linking industry with government and higher education research organisations:

- CRC for Australian Weed Management (core partner)
- CRC for Beef Genetic Technologies (core partner)
- CRC for Desert Knowledge (associate)
- eWater CRC (core partner)
- CRC for Future Farm Industries (core partner)
- CRC for Greenhouse Gas Technologies (core partner)
- CRC for an Internationally Competitive Pork Industry (core partner)
- CRC for Landscape Environments and Mineral Exploration (core partner)
- CRC for Molecular Plant Breeding (core partner)
- CRC for National Plant Biosecurity (supporting participant)
- CRC for Seafood (supporting participant)
- CRC for Sustainable Aquaculture of Finfish (supporting participant)
- CRC for Water Quality and Treatment (core partner)

University-designated Research Institutes and Centres

- Australian Institute for Social Research
- Australian Centre for Evolutionary Biology and Biodiversity
- Australian Research Centre for Population Oral Health
- Centre for Biomedical Engineering
- Centre for Early Origins of Health and Disease
- Centre for Food Plus
- Centre for High Performance Integrated Technologies and Systems
- Centre for International Economic Studies
- Centre for Labour Research
- Centre for the Quantification and Management of Risk
- Centre for Reproductive Health
- Freemasons Foundation Centre for Men's Health
- Institute for Climate Change and Sustainability
- Institute for Geometry and its Applications
- Institute for Mineral and Energy Resources
- The Environment Institute
- The Robinson Institute

Other University Centres

- Australian Centre for Ancient DNA
- Centre for Australian Indigenous Research and Studies
- Centre for Automotive Safety Research
- Institute for International Trade
- International Centre for Financial Services
- National Centre for Social Applications of Geographical Information Systems
- TRC Mathematical Modelling

Faculty Research Centres, Units and Groups

- Australian Research Centre for Health and Wellbeing of Women and Babies
- Cardiovascular Research Centre
- Centre for History of Food and Drink
- Centre for Internet Technology Research
- Centre for Orofacial Research and Learning
- Centre for Pain, Addiction and Anaesthetic Research
- Children's Research Centre
- Colgate Australian Clinical Dental Research Centre
- Public Health Information Development Unit
- Research Unit for the Study of Society, Law and Religion

Joint University/Other Research Organisation Units

- Adelaide Microarray Facility
- Adelaide Proteomics Centre
- Australian Centre for Plant Functional Genomics
- Australian Centre for Visual Technologies
- Centre for Stem Cell Research
- Centre for Treatment of Anxiety and Depression
- Centre for Defence Communications and Information Networking
- Centre of Expertise in Phased Array and Microwave Radar Systems
- Centre of Expertise in Photonics
- Centre for Military and Veterans' Health
- Defence Systems Innovation Centre
- Don Dunstan Foundation
- Ethics Centre of South Australia
- Mosaic Fertilizer Technology Research Centre
- SARDI / University of Adelaide Food Safety Alliance
- South Australian Centre for Economic Studies
- South Australian Centre for Rural and Remote Health



Internationalisation

Internationalisation Strategy

New strategies were developed and approved for nine major markets: Canada, Chile, France, Germany, India, Indonesia, Scandinavia, the United Kingdom and the USA. The University's strategy with respect to its largest market, China, was developed in 2007. These country strategies are accessible by all University staff and are a key reference whenever new or existing international agreements are being evaluated. Attention was also given to developing new markets in the Middle East and Latin America, to the recruitment of sponsored research students from overseas, and to the quality of the international student experience.

As part of its international engagement, the University joined Academic Consortium 21 (AC21), an international grouping of 19 research-intensive universities. Member universities include Sydney in Australia, Warwick in the United Kingdom, Freiburg in Germany, Nagoya in Japan, Peking, Fudan and Shanghai Jiaotong in China, Chulalongkorn in Thailand, and Gadjah Mada in Indonesia. The Consortium enhances the University's international standing and provides additional opportunities for research and teaching collaboration, student and staff exchange, benchmarking and quality assurance with high quality partners. The University has offered to host the biennial International Forum and General Assembly of AC21 member institutions in Adelaide in 2012.

International

International Agreements and Links

During the year the University put in place a comprehensive framework for the approval of all international agreements, and an on-line international agreements database accessible to all University staff. Both were commended by the Australian Universities Quality Agency in its 2008 audit of the University.

Forty-three international agreements with 49 overseas institutions were signed by the University in 2008; nine of these were renewals of existing agreements. The agreements covered such things as research collaboration, student sponsorship, student exchange, and joint teaching programs. The countries most strongly represented among these agreements were Germany (agreements with 11 institutions), China (8) and Malaysia, France, Sweden and the UK (3 each). There were agreements with Chile, Indonesia, Italy and the USA (2 each). Other countries involved, each with a single institution, were Canada, Eritrea, Finland, Hong Kong, India, the Netherlands, New Zealand, Spain, Taiwan and Vietnam.

Among the international agreements signed by the University in 2008 were:

- *An Agreement for Cooperation in Human Capital Development (Chile)*. This Agreement provides for the Chilean Government Bicentennial Fund to fund sponsored postgraduate coursework, masters by research and PhD students who enrol at the University in nine specified priority fields.
- *An Agreement for Educational Exchange and Cooperation (Germany)*. This state-to-state agreement between Baden-Württemberg and South Australia is a renewal of an agreement that has been in place since 1997. It is primarily about student exchange between the public universities of the two states. The signing was the occasion of a visit to Adelaide by the Minister of Science, Research and the Arts and by the Stuttgart University Orchestra, which gave a free public concert in Elder Hall.
- *An Agreement for Offering a Joint Programme Leading to a Master of Science in Addiction Studies Degree (UK, USA)*. This unique, fully online masters degree combines the expertise of three of the top addiction studies centres in the world. Teaching commenced in mid-August 2008. It is a fully integrated joint degree, with a specially designed curriculum. The University is the host university, responsible for the administration and coordination of the program, for the first three years.

The University chose to terminate or not renew a number of international agreements which were inactive or no longer deemed to be strategically important. It also decided to amend all prior agreements without an expiry date so that they can be properly reviewed prior to renewal.

During 2008 overseas missions were led by the Vice-Chancellor, the Deputy Vice-Chancellor (Academic), the Deputy Vice-Chancellor (Research), the Pro Vice-Chancellor (International), the Pro Vice-Chancellor (Research Operations), and the Executive Deans of every faculty within the University. These missions were designed to develop and strengthen links with overseas partner institutions and governments in all of the University's major markets around the world.

In turn, the University hosted 42 visits by delegations from 22 overseas countries. Visitors included government ministers from Eritrea and Germany; Ambassadors or High Commissioners from Argentina, Brazil, Chile, Hungary, Mexico and Pakistan; Presidents or Vice-Presidents from universities in many countries; representatives of the regional government of Apulia (Italy) and of scholarship sponsoring bodies; and a group of 23 senior Thai public health officials. The country most strongly represented among visiting delegations was China, followed by Chile and Malaysia.



義
安

The
Ngee
Ann
Kongsi

Offshore campus

The University decided in 2008 to upgrade the Ngee Ann-Adelaide Education Centre in Singapore to a full-fledged campus and announced plans to double its student numbers on that campus with the help of its joint venture partner, the Ngee Ann Kongsi. The introduction of new postgraduate programs and the development of research activities there in consultation with the Economic Development Board of Singapore is expected to make this offshore campus a regional centre of excellence. An academic director for this campus was to take up his appointment in January 2009.

In April 2008, the University and the Ngee Ann Kongsi commemorated the 10th anniversary of this joint venture, with a very well-attended dinner in Singapore and the launch of the Singapore Adelaide Alumni Fund to provide financial assistance to undergraduate students from Singapore who wish to study full-time at the University. The Ngee Ann Kongsi generously agreed to match every dollar contributed to this Alumni Fund up to S\$250,000. Many high profile Singaporean identities are graduates of the University, including Dr Tony Tan (former Deputy Prime Minister), the late Mr Ong Teng Cheong (first elected President of Singapore), High Court judge Mr Justice Lee Sieu Kin, Singapore's Minister for Transport (Mr Raymond Lim), the Senior Minister of State for Trade and Industry (Mr S Iswaran), and the past Managing Director of Singapore Airlines, Chairman of the Singapore Broadcasting Corporation and current Chairman of the OCBC Bank (Dr Cheong Choong Kong).

International Research Collaborations

Academic staff at the University of Adelaide have extensive links with research colleagues in other institutions around the world, which have resulted in large numbers of joint research grants and co-publications. The countries with which the University has the closest research links are the United States, the United Kingdom and Germany. During 2002-2006, the University's academic staff produced jointly authored publications with faculty members in United States universities (716 papers), the United Kingdom (367), Germany (280), Canada (215), and France (157). In recent years, a growing number of research relationships have developed with universities in Asian countries as well, particularly Japan, China, India, Indonesia, Malaysia and Singapore. The University again hosted many international research conferences during the year also. All faculties are represented in these international research collaborations, which contribute significantly to the University's global reputation and ranking.

International Enrolments

In 2008 the University exceeded its targets for international student enrolments, and again outperformed the average rate of growth in international students for Australian universities. Importantly, after little change in recent years, international higher degree by research (HDR) load grew significantly. The overall international student load increased from 4358 EFTSLs in 2007 to 4682 EFTSLs at the end of 2008, an increase of 6.9%. International students comprised 27.8% of the University's total student load and 26% of the student load at the University's campuses in Adelaide.

The total number of international students (persons rather than student load) reached 5857 in 2008, a 6.3% increase on the previous year, of whom 666 were enrolled offshore in Singapore and Hong Kong. The top source countries for international students were (in order) China, Malaysia, Singapore, Hong Kong, India, USA and Vietnam. Again, the academic programs with the highest international student enrolments were those in Commerce and Engineering, with the numbers in Medicine being constrained by the availability of places.

The University took several initiatives in 2008 to diversify the sources of its international students. For example, the University hosted a full-day seminar on 'Opportunities for

Collaboration between Latin America and South Australia'. This was opened by the Premier of South Australia, and attended by Heads of Missions to Australia from Argentina, Brazil, Chile, Mexico and Venezuela, as well as Austrade and nearly a hundred people from the local business community. Subsequently, an agreement was entered into between the University and the Chilean government for the sponsorship of postgraduate students from that country. Similar initiatives are also being pursued with selected countries in Asia, including Indonesia, Vietnam and Saudi Arabia. Bursaries were introduced for outstanding postgraduate applicants from India. Further, the International Office brought to Adelaide 20 of the University's agents from 10 different countries for Agents Week, while two study abroad students from the United States were appointed Student Ambassadors by AEI North America to raise awareness among American students of study opportunities here through peer-to-peer marketing.

Professional and Continuing Education (PCE) saw a growing demand for its range of English language programs, cultural programs and English teacher training services for international students and visiting groups. In 2008, PCE conducted short-term study tour programs for 17 groups made up of over 400 students from Japan, Iraq, Oman, the

United States, Korea and China; it had over 640 students undertaking its Pre-enrolment English Program (PEP), which provides a direct entry pathway to undergraduate and postgraduate programs at the University of Adelaide (a 43% increase over the previous year); and over 100 students enrolled in the General English for Academic Purposes (GEAP) program (a 26% increase from 2007). There was a significant increase in scholarship students from Saudi Arabia undertaking long-term GEAP programs prior to entry into the University. PCE achieved its objective of improving diversification of the student base by welcoming GEAP students from 10 new countries. The Centre also experienced significant growth in tailored English Language and TESOL Methodology programs for groups of teachers from countries such as Korea, China and Thailand.

AusAID scholarship numbers grew to over 100 students in 2008. These numbers included the last intake under the Australian Partnership Scholarship (APS), a program specific to Indonesia created in response to the December 2004 tsunami. Negotiations with AusAID led to a specific agreement to provide education for 64 Iraqi postgraduate students in Agriculture and Water Resource Management.



Study Abroad and Student Exchange

In 2008, 178 University of Adelaide undergraduate students undertook (as part of their degree) a study abroad program arranged through the International Office. Of these, 58% took advantage of OS-HELP loans offered by the Australian Government, while 42% received externally-funded student exchange scholarships from the Endeavour Cheung Kong and the University Mobility in the Asia-Pacific (UMAP) schemes. These scholarships were for study in Canada, Japan, Korea, USA, China, Hong Kong, Singapore, Thailand and Malaysia. Each scholarship winner received \$5,000 to subsidise costs. A further seven students received scholarships of \$7,600 each to study in Europe as part of a consortium agreement with four European universities and three other Australian universities, with funding from the European Union and the Australian government, in the fields of ethics, human rights and institutions. In addition, the University received Endeavour Cheung Kong funding for 18 students from five different countries to study in Adelaide.

An important development in 2008 was the expanded range of courses offered for incoming study abroad students through the University's Summer and Winter programs. This initiative was based in part on evidence indicating that more than 50% of US study abroad students now spend less than a semester overseas. The schools with the largest number of outgoing exchange students were Business and Law, while the Faculty of Humanities and Social Sciences had the largest cohort of incoming study abroad students.

The overwhelming majority (80%) of the University's students on exchange still go

to universities in Europe or North America. There appears to be growing student interest in exchanges with Spanish-speaking countries as well. The above figures do not include the large number of Higher Degree by Research (HDR) students who participate in international conferences during their degree programs. Student-initiated programs in medicine and internships arranged through the award-winning local chapter of AIESEC are also not included.

During the year, the University signed new student exchange agreements with quality universities in Finland, France, Germany, Italy, the Netherlands, Spain and the United Kingdom. The University also held a Student Exchange Fair on campus to encourage Adelaide students to consider overseas study and to discuss this possibility with representatives from exchange partner institutions. Around 1,000 students visited this Fair, meeting representatives from partner universities in Europe, Asia and North America. The level of student interest was noticeably greater than in previous years.

The largest ever number of students from the University of Adelaide won Chinese Government scholarships to continue their studies in China. Five students went to China to undertake programs ranging from intensive Chinese language courses to doctoral research. The Confucius Institute also assisted two students to attend the Dragon Foundation's Dragon 100 Young Leaders' Forum, held in Hong Kong and Guangzhou. A University of Adelaide student participated in a 21-day tour of Japan in November/December, one of 10 Australian university students funded by Mitsui Educational Foundation.

Internationalisation of the Curriculum

The Academic Board defined internationalisation of the curriculum as "a curriculum with an international orientation in content, aimed at preparing all students for performing (professionally and socially) in a global context", and invited faculties to determine the most appropriate strategies for implementing this in their programs. The Internationalisation Committee endorsed a list of 11 strategies. The University's website on this topic was revamped, to assist staff in selecting those strategies most appropriate to their program.

Internationalisation of the curriculum is an integral part of the twice-yearly *Teaching at University* course and the first course of the *Graduate Certificate in Education (Higher Education)*, with one of the eight 3-hour sessions focused on Curriculum for Student Diversity and Graduate Attributes. More than 50 academic staff participated in these courses during 2008. Internationalisation, with a focus on student diversity, was also the common thread that ran through the 6-hour Sessional Teacher induction programs provided by the Centre for Learning and Professional Development (CLPD) in three faculties: Sciences; Humanities and Social Sciences; and Engineering, Computer and Mathematical Sciences. A total of 209 demonstrators and tutors attended these programs during the year. The University's Cultural Awareness Program of four 3-hour modules was again provided by CLPD. It was attended by 78 professional and academic staff in 2008.

International Student Experience

An important advance in 2008 was the introduction of the International Student Barometer (ISB) to assess the quality of the international student experience. The survey also enables the University to benchmark itself in this respect against other universities participating in the survey, as it is used by over 90% of the United Kingdom's research-intensive universities and other institutions in Australia, Ireland, New Zealand, the United States and continental Europe. The findings showed a high level of satisfaction with many of the University's student services: the arrival services provided by the International Student Centre (ISC) were rated more highly than at most other benchmarked universities, and were the accommodation services and student counselling services. However, international students rated Adelaide very poorly as a place in which international students could form friendships with locals. The Australian Universities Quality Agency (AUQA) commended the University for the high levels of satisfaction expressed by international students with the services and support provided by the International Student Centre. However, AUQA recommended however that the University "more actively promote the value of social and cultural inclusivity and implement activities and programs to ensure effective two-way interaction between domestic and international students". This will be a priority on the University's agenda for 2009.

In 2008, the ISC extended its national award-winning Peer Mentor Program in order to support activities for new students through the first six weeks of each semester; 54 mentors provided over 3,800 hours of voluntary service welcoming and supporting new international students. The Centre for Learning and Professional Development also continued to run a volunteer support scheme for international students, based around English conversation development.

A well-attended International Careers Evening was held each semester, focusing on employment preparation and skilled migration opportunities in South Australia as well as job prospects in home countries (China, Malaysia, Singapore) and generic information. In addition, the University's Careers Service ran weekly workshops on such topics as 'International Job Search Strategies'.

International Alumni

The University introduced the new online alumni community Adelaide onLION. This has been designed to make it easier for people working overseas and in remote regions to keep in contact with developments in Adelaide and with each other. The response to this initiative from international alumni has been outstanding.

The University currently has seven international alumni networks located in East and West Malaysia, Singapore, Hong Kong, the United Kingdom, the United States (New York) and Thailand; a new China-based network is also being set up. Senior members of the University visited each of these alumni networks during the year. Further, the University played a very active part in the Australian Universities International Alumni Convention in Singapore in June 2008.





Community Engagement

Art and Heritage

In 2008 the Art and Heritage (A&H) program continued to provide a diversity of platforms for connection and discussion between the community and academic disciplines. Art and Heritage also supported statewide cultural activities such as History Week and the South Australian Living Artists Festival, to maximise the profile of the University in the wider cultural landscape.

Collection management work continued with an increasing rate of entries into the database, enhancing A&H's ability to source artefacts for a variety of projects and exhibitions. One such activity was assisting a documentary about Sir William and Sir Lawrence Bragg. Material from the Physics Museum collection and the Scientific Apparatus Collection helped to recreate the Braggs' laboratory at Leeds University.

In 2008 A&H established a volunteer group to support staff in meeting the demands of collection management and cultural tour development. This initiative proved to be successful with fifteen volunteers helping to complete several significant projects. These include the establishment of a self-guided cultural tour of the Roseworthy

Campus and cataloguing of the Heritage Furniture Collection.

A&H also helped to respond to the cultural needs of the community by organising a public memorial for the sculptor John Dowie AM DUniv (Adel), who died in March 2008. Over 300 people attended the ceremony, held in Bonython Hall. The Dowie family and the broader community expressed gratitude to the University for honouring the much loved and celebrated South Australian artist.

A key strategy of Art and Heritage is collaboration with industry partners as well as schools within the University. One such significant cross-sectorial collaboration was organising a fundraising exhibition for the Elder Conservatorium of Music, for which the senior artist Franz Kempf contributed artworks.

A jewel in the crown for A&H was receiving the generous donation of Australian and international artworks, valued at a total of \$178,000, from private collectors. The gifts demonstrate the regard in which the University and its collections are held.

Development and Alumni

2008 saw the dawn of a new era for both the development and alumni programs at the University of Adelaide. Several key initiatives launched during the year heightened the way in which the University engages, supports and recognises its alumni and friends.

Alumni Relations

Several key objectives from the University's Alumni Relations Strategic Plan 2007–2011 were implemented in 2008, including the distribution of the Alumni Membership Card to over 55,000 alumni, the launch of the online community Adelaide onLION, and the establishment of Development and Alumni Officer positions in the Faculty of Sciences, Health Sciences, Professions and Humanities and Social Sciences.

Alumni Awards

The Honours Alumni University Medal for 2008 was presented to Brendan Lim at the August Graduations. The recipients of the 2008 Distinguished Alumni Award were:

- Robert Benjamin Cooter, MBBS 1952 — In recognition of his outstanding and innovative vision for rural health, which has been important in laying the foundation for rural health training in general practice in South Australia, together with his continued contact and support of the University of Adelaide over many years.
- Elizabeth Alice Silsbury B Mus (Hons) (1967), Mus Bac (1959), BA (1956), Dip Mus (1953) — In recognition of her exceptional contribution to music and music education in South Australia at primary, secondary and tertiary levels; the value of her talents and skills promoting South Australia through national and international organisations and publications, and her service to the University of Adelaide.
- Gwendoline Fay Gale D Univ (1994), PhD (1962), BA (Hons) (1954), BA (1952) — In recognition of her outstanding teaching influence and achievements in Women Studies and University Equity, in Human Geography and Aboriginal Studies (awarded posthumously).

Alumni Communications

In July 2008, the University of Adelaide launched its new online community, Adelaide onLION. This interactive, social and professional networking facility enables alumni to connect within a secure, private online environment. Over 8,000 alumni from all over the globe joined Adelaide onLION in 2008.

Perpetual Email is now available to all alumni through Adelaide onLION. Over 11,000 of the University's alumni are making use of this free email forwarding service that allows alumni to keep a single University-based email address, no matter where life takes them.

The University's bi-annual alumni magazine *Lumen* highlights the latest research and educational strengths of the University and provides a forum for sharing the achievements of alumni with over 56,000 hardcopy readers and 40,000 electronic readers around the world.

The University's new alumni e-newsletter, *The Roar*, (formerly known as *Adelaide-link*) continues to grow with over 8,000 subscribers now receiving the latest University and alumni news directly to their inbox each month.

Alumni Events

The Student and Industry Program continued to be a great success with events held in: Civil, Environmental and Architectural Engineering; Psychology; Viticulture, Oenology, Wine Business and Marketing; Environmental Policy and Management; and Architecture and Landscape Architecture.

Roseworthy Campus celebrated its 125th Anniversary in 2008, marking the occasion with a service in St Peter's Cathedral, a commemoration ceremony held in Bonython Hall, a reunion dinner for graduates held at the Adelaide Oval, reunions for former staff and Council members, and an Open Day at the campus. Around 5,000 people in total attended these events.

The Golden Jubilee for graduates of 1958 took place on October 17. The reunion included a commemoration ceremony, at which John Halbert MBE (Dip Phys Ed) gave the Golden Jubilee Address, and was followed by a reunion luncheon. The School of Architecture, Landscape Architecture and Urban Design held a Gala Reunion Dinner for alumni to celebrate its 50th Anniversary. The dinner was preceded by a cocktail reception hosted by the Lord Mayor of Adelaide. Internationally, University staff and alumni celebrated the 10th Anniversary of the University's partnership with the Ngee Ann-Adelaide Education Centre in Singapore and later in the year participated in the Australian Universities International Alumni Convention, also held in Singapore.



Top left: Chief Minister Taib (right), Vice-Chancellor Professor James McWha and other guests tour the newly landscaped Taib Mahmud, Chief Minister of Sarawak Court
Photo by John Hemmings

Top right: Vice-Chancellor and President Professor James McWha with two of the scholarship recipients, Mechatronic Engineering student Christopher Lee and Veterinary Science student Stephanie Warwick.
Photo by John Hemmings

Above: Part of the Art & Heritage Collection, this microscope was purchased by Nobel Laureate William Bragg in London in 1898 for his private use and the enjoyment of his family.
Bragg microscope made by C. Collins of London
Donated by Dr John Jenkin
Photo by Mick Bradley

Alumni Networks

The alumni networks both in Australia and overseas held numerous activities in 2008, ranging from reunion dinners to public lectures, and continue to play an integral role in reconnecting alumni to each other and to the University. A Federal Parliamentary Alumni Network was officially launched in May by the Vice-Chancellor at Parliament House in Canberra. Instigated by arts graduate Senator Natasha Stott Despoja, the network will provide an opportunity for Federal Members of Parliament and key parliamentary staff to re-engage with the University and fellow graduates. The inaugural annual alumni luncheon was also held in Canberra and attended by over 100 graduates and University staff.

Development

Adelaide Benefactors Circle

A University-wide Donor Recognition Program — called Adelaide Benefactors Circle — was launched in Bonython Hall in June to acknowledge, recognise and thank the University's major benefactors.

In February, the Heritage Foundation Committee organised a Progressive Dinner held in three of the University's heritage-listed buildings. The silver service dinner attracted 160 guests and raised over \$150,000 for the Heritage Foundation.

Annual Appeals

Every year, alumni, friends and the general public support the University of Adelaide's commitment to educational excellence by giving to its annual appeals. These appeals are directed to two priority areas: the Barr Smith Library, and deserving students through an undergraduate scholarships program known as The Vice-Chancellor's Scholarships Fund.

The Barr Smith Library Appeal has raised over \$90,000, which helps to purchase books and electronic resources to keep the University's main library a state-of-the-art facility. Over \$50,000 has been donated to the 2008 Vice-Chancellor's Scholarships Fund, and this gives four exceptional students the chance to attend the University of Adelaide in 2009. Each scholarship is valued at \$5,000 per year for the program of study, with recipients selected on academic merit and financial need.

Bequest Program

The Hughes Bequest Society was launched on 10 October to thank those in the community who have remembered the University in their wills. The Vice-Chancellor hosted a luncheon attended by 50 guests. Since the launch of the Society, there has been a high level of interest, with many new bequestors making their intentions known and confirming their bequests to the University of Adelaide.

As part of the Bequest Program, several Friends and Benefactors events were held in 2008:

- A tour of the School of Agriculture, Food and Wine at the Waite campus, where benefactors were hosted in the Plant Research Centre and toured the Greenhouse area.
- A recital in Elder Hall at which the Elder Trio performed.
- A behind-the-scenes tour of the Barr Smith Library.
- A tour of the Ray Last Anatomy Laboratory and a presentation on brain function.
- A visit to Whalers Inn in Victor Harbor to hear a presentation about University developments.

One significant bequest will fund new University of Adelaide research fellowships for outstanding young scientists. Adelaide resident, Hamish Ramsay, has fulfilled his late stepmother's wish to help advance scientific research by pledging funds for 4-year Ramsay Fellowships in the natural sciences.

Planned Giving Newsletter

The University's bi-annual planned giving newsletter *Impact* has a readership of over 2000 alumni and friends of the University. It highlights events and profiles alumni whose generosity has made an impact on the University.

Scholarships

In 2008, the scholarship program recognised and encouraged academic excellence, helping young people to realise their potential. Development and Alumni negotiated over 40 new scholarships valued at close to \$1 million for undergraduate and postgraduate students in the areas of Music, Engineering, Business, Commerce, Economics, Agriculture and/or Horticulture, as well as for Indigenous students and support for elite athletes.

Taib Mahmud Court Naming Ceremony

In November, the plaza outside the Ligertwood Building was officially named the Taib Mahmud, Chief Minister of Sarawak Court (Taib Mahmud Court on signage), to honour and recognise one of the University's most distinguished and long-time benefactors, the Right Honourable Pehin Sri Dr Haji Abdul Taib Mahmud AO.

Thank You Event

The University entertained over 500 guests on 19 November at its annual thank you event. The celebration — 'BBQ in Bonython' — was held to thank supporters for the real difference they make to the University of Adelaide every year.

Elder Hall

General Overview

Elder Hall was a lively, busy and popular venue throughout the year. Steeped in a rich cultural and musical tradition, the historic and elegant 670-seat auditorium has become an increasingly well-known venue for the general public. Well over 45,000 people — local, interstate and international — attended concerts, conferences and other events in 2008. This increasingly varied use of Elder Hall continues to break down barriers between the University of Adelaide and the wider community.

ELDERHALL lunchtimes 2008

The Friday lunch hour series again proved to be one of Adelaide's most prestigious and increasingly popular concert series. The 2008 season had a total of 33 concerts over two semesters.

Income for the year was up by approximately 20% from 2007 and over 15,500 tickets were sold, with an average attendance of 475. The continued success of this series is due to the consistently high quality performances by local and international artists performing, and the accessibility of the concerts through pricing, timing and location.

The inaugural Adelaide International Cello Festival in April, presented in association with the Adelaide Symphony Orchestra, was a highlight of the series. Elder Hall was the venue for over 20 Festival events, including six daily lunch hour concerts presented to great critical acclaim.

Several concerts were sold out, including performances by world-renowned jazz trumpeter Ray Vega in concert with the Elder Conservatorium Jazz staff, and Konstantin Shamray, the 2008 winner of the Sydney International Piano Competition of Australia. Also of note was a concert by early music specialist Lucinda Moon and friends, which featured the only Lirone (a 16th Century

string instrument) in the southern hemisphere, and the all-Bach organ recital by Calvin Bowman, where videoing of the performer's hands and feet at work was beamed onto large screens to great effect.

ELDERHALL evenings 2008

A broad mix of styles and eras, this series of concerts not only showcases the Elder Conservatorium students and ensembles but is vital in facilitating their development from student musicians to professional performers. The concerts feature guest artists from Australia and abroad and attract music lovers of all genres, school groups, academic and professional staff from the University of Adelaide, invited guests as well as family groups. The series was supported by ETSA Utilities and average attendance across the six concerts was 350 people per performance.



Office for Community Engagement

During the year, a review was undertaken as to the best way that the Division of the Deputy Vice-Chancellor and Vice-President (Research) could support the University's community engagement activities. This included a re-evaluation of the role of the Office of Industry Liaison at Thebarton campus, whose primary responsibility has been the general promotion and facilitation of linking University students with industry, and other engagement activities such as the Western Region Enterprise Day for primary and secondary school students.

It was agreed that the staff of the Office of Industry Liaison would move from Thebarton to join the Director, Community Engagement, Mr Martyn Evans, in a new Office for Community Engagement, located in the city. The management of the Business Incubator programs and associated staff were relocated to the Entrepreneurship, Commercialisation and Innovation Centre.

Throughout the year, Mr Evans met with senior Government and Opposition members of parliament in Adelaide and Canberra, in order to strengthen the relationship between the University and parliamentary and government decision makers. He also represented the University at a forum in Seoul, Korea, at which he gave a presentation on the benefits of international joint research projects and on the opportunities to facilitate collaboration between major research universities. The forum was attended by staff from about 40 universities from 20 countries, including three Australian universities.

The Office for Community Engagement actively worked to increase the University's presence in Adelaide's northern suburbs through attendance at the Northern Community Summit held in Elizabeth (which targeted the

critical issues of education, social inclusion and workforce participation in Northern Adelaide); the Salisbury Learning Forum hosted by the City of Salisbury; City of Playford — Playford Partnership Networking Breakfasts; and Playford Alumni. A relationship has been established with the Northern Advanced Manufacturing Industry Group which, through its *Concep2Creation* program, is promoting a 'product life cycle' approach to science, mathematics and technology education by helping schools and students to develop the knowledge, understanding and appreciation of advanced manufacturing processes and possibilities through a problem-based learning approach.

The Office has also taken a leading role in engaging with the community on the possible development of the University's Glenthorne Farm as a base for a world-class Woodland Recovery Initiative. The University has proposed the initiative to halt the loss of animal and plant species in the Mt Lofty Ranges and to provide long-term environmental and social gains for the local community, the state and the nation.

In support of an increased emphasis on establishing and reinforcing the University's links with industry, the Office promoted Student-Industry Partnership programs that bring together industry, commerce and University schools and students. These programs provide a paid structured workplace experience for students while industry benefits from knowledge transfer and an opportunity to access potential employees.

The 12th Western Region Enterprise Day (WRED), coordinated by the Office, was held in September. WRED



THE FUTURE IS WRED



began in 1997 as way for younger students to learn about business enterprise and entrepreneurship and to strengthen school and community links between the University and the western region of Adelaide. The opening ceremony was attended by upper primary and secondary school students, teachers, principals, parents, volunteers, and a number of community leaders. State Attorney-General, the Hon. Michael Atkinson MP, whose electorate is in the western suburbs, officially opened proceedings. The day was a success, with a record number of students attending: 135 primary and 108 secondary school students from 22 schools within the council areas of Port Adelaide Enfield, Charles Sturt and West Torrens. Some 60 volunteers and 23 teachers supported the activities of the day.

Above from left: Science Honours students Owen Burnell and Kate Haylock with Associate Professor David Paton AM at Glenthorne

Open Day

Open Day is the key iconic event in the University of Adelaide's calendar. It is a day when the University opens its historic North Terrace campus to prospective students, their families and the broader community, and offers a diverse and exciting program of events.

The core objectives of the day are to engage prospective students, giving them the chance to talk with staff, explore the campus and discover what the University can offer them, and to generate positive involvement of the broader community.

Attendance at Open Day has been growing each year, with numbers more than doubling over the last four years — from 6,000 people in 2005 to 14,000 in 2008.

Professional and Continuing Education (PCE)

Professional and Continuing Education (PCE) plays an important role in linking the University with the local, national and international community. In 2008, over 5200 students studied with PCE, which offers its programs through three business streams: Community Programs, Professional Education and the English Language Centre (ELC).

PCE's Professional Development Programs enrolled over 1200 people in public courses throughout 2008, and delivered over 80 tailored training solutions to another 800 participants. Tailored training was developed and delivered for local, national and international corporate clients in both the public and private sector.

In 2008, over 800 students studied in PCE's Year 12 Holiday Revision Program. The program runs during school holidays throughout the year, supporting University recruitment efforts by raising awareness of the University throughout secondary schools.

PCE's Community Language Program continued to thrive, attracting nearly 900 learners across a selection of nine languages in over 50 classes. The most popular languages in 2008 were Spanish, Chinese and Italian.

PCE welcomed 17 international Study Tour groups in 2008. Over 415 students from China, Japan, Oman, the United States, Iraq and Korea, came to the University for between two and twelve

weeks and studied programs developed to meet specific educational needs in subject areas including English and TESOL (Teaching English to Speakers of Other Languages) Methodology.

The Pre-Enrolment English Program (PEP) attracted over 640 students during 2008. For students who successfully complete this program it provides a direct entry pathway to undergraduate and postgraduate programs at the University of Adelaide. General English for Academic Purposes (GEAP) attracted over 100 students from 25 different countries.

PCE's Certificate IV in TESOL was once again extremely popular with two 4-week intensive and two part-time courses reaching maximum numbers. Graduates are in high demand by local and international institutions seeking quality teachers of English as a Second Language (ESL).

PCE runs a successful Homestay Accommodation Program, placing international students with local families for a first-hand experience of everyday Australian family life. Homestay is a wonderful way for students to improve their English, acquire confidence, and learn more about Australian culture in a friendly, nurturing environment. PCE placed over 450 students with Adelaide families throughout 2008.



Research Tuesdays

In April 2007, the University launched the 'Research Tuesdays' lecture series to put industry, business and the broader community in touch with the latest work from University researchers. The monthly series continued in 2008 to attract audiences interested in hearing from the University's leading researchers on a diverse, challenging and relevant mix of topics.



Radio Adelaide

The University of Adelaide gains a valuable cultural and educational outreach to local, national and international audiences through its ongoing support of Radio Adelaide, its community radio station.

Nationally, community radio audiences are growing rapidly. Radio Adelaide's estimated audience is around 80,000 per week, with many more accessing the station's online broadcast and podcasts.

With over 500 volunteers, Radio Adelaide is the largest volunteer body in the University and is a microcosm of the cultural diversity of the University and South Australia. Volunteers aged between 16 and 85 years speak over 30 languages and broadcast regular programs in Swahili, Farsi, Dari, Arabic, Dinka, Serbian, Bosnian, Polish, Japanese, Spanish and English.

The diversity of Radio Adelaide's programs, volunteers and listeners was recognised when the station received the inaugural Governor's Multicultural Award for Media in November. The judges were impressed by Radio Adelaide's "fresh inventiveness" and said "commercial radio could learn a lot from Radio Adelaide". They noted that while many media outlets run special features or present articles, they rarely transform their policies and daily practices as Radio Adelaide has.

Radio Adelaide is committed to equity and access, social inclusion, community engagement and education on a range of levels and some of the results of this commitment were revealed in the first Station Census, conducted over one week in August 2008. The census surveyed both people and content and the results were remarkable. In an average week the station creates 101 programs and broadcasts a further 17 from other sources. It presents 154 interviews – 49% news and current affairs and 34% music,



arts and culture, 30 reviews across various artforms, 86 discussions on a range of topics, 24 commentaries, 6 serials, drama or poetry segments, 24 news bulletins, 328 community and 'what's on' announcements. The station plays over a thousand pieces of music across a wide range of genres, with 48.2% being Australian music; this is well above the community radio guideline of 25% and about 5 times the percentage of the average commercial radio station. Of that music, 18% originates in South Australia and 4% has been recorded by Radio Adelaide, giving exposure to a wide range of local artists.

Radio Adelaide marked its 36th birthday in 2008 with a mid-winter event that emphasised the diversity of participants and listeners and notions of sharing and respecting cultural tradition. The *Souper Celebration* brought together 12 different program communities, each cooking up their own special soup for a live broadcast and soup kitchen on North Terrace. It raised \$700 and provided an important opportunity for broadcasters to meet listeners and engage with each other.



With 2008 an Adelaide Festival year, February and March were particularly busy for the station. There were 11 different festivals running during those months, ranging from cultural institutions such as the Adelaide Festival and Fringe, WOMADelaide and Writers Week through to the lesser-known Deadly Funny Awards, Future Music Festival and FUSE. *The Big F* was a program dedicated to them all and provided the largest daily media coverage supporting local arts and culture.

This large-scale support of local arts and music was continued later in the year with Radio Adelaide's annual *Live Music Fest*, which brought over 400 musicians into the station over six days to play live and be interviewed.

Station Manager, Deborah Welch, was elected President of peak body the Community Broadcasting of Australia Association (CBAA) in November 2007, the third Radio Adelaide Manager to hold this position. This places her at the forefront of community radio policy and development, including the imminent move into digital radio broadcasting.

Digital radio has brought partnerships with other local community radio stations, but many other partnerships have also been formed, or continued, through access programming, training, consultancy and production services, which together have generated significant income for the station.

Radio Adelaide Training, a Registered Training Organisation, has continued to develop effective partnerships that make the station the foremost broadcast training entity in South Australia. Radio Adelaide works in Alice Springs with partner CAAMA to provide certified training for young Aboriginal broadcasters, with Ausmusic SA, with the University of Adelaide's Bachelor of Media and the University of South Australia's School of Journalism, with secondary schools and community radio stations around the state. The focus of training is to sustain quality broadcasting on Radio Adelaide, with over 60 new graduates each year.

Production and multimedia services have continued to expand and include recording, podcasting, equipment hire, audio conversions, mastering, editing, telephone hold messaging and duplications. Clients include the Office for Volunteers, the Barr Smith Library, State Library of SA, the Elder Conservatorium, the Hawke Centre of SA, the South Australian Museum, the Don Dunstan Foundation and the Adelaide Festival.

While many feared Voluntary Student Unionism would spell the death of student broadcasting, a new partnership with the Adelaide University Union in 2008 saw an increase in airtime to six hours over three nights and a dynamic new director, Jonathan Brown, co-ordinating some of the best broadcasting for many years.

Radio Adelaide Awards

- 2008 New York Festivals — Silver World Medal, Human Relations Category for *Songs in the Blood: Stories of Women Living with HIV/AIDS*
- 2008 Governor's Multicultural Award for Media
- 2008 Archbishop of Adelaide — Media Citation for *5 Tables for 5: Conversations Around Queer Ageing*
- 2008 CBAA Award — Excellence in Music Programming for *Rhythm Stick*
- 2008 SA Unions Annual Award — Best Example of Organising Women Workers for *Your Rights at Night*, Special International Women's Day Broadcast.
- 2008 SACBA Bilby Award — Best Outside Broadcast Award for *Club Cool*
- 2008 SACBA Bilby Award — Interview of the Year for Jessie Younan Interview
- 2008 SACBA Bilby Award — Best Station Message, Highly Commended for *Reel Time Darth Vader*



University Tours

The University of Adelaide offers tours at its four campuses, and also the National Wine Centre. The tours are conducted by experienced guides, some of whom are graduates of the University. Throughout 2008, more than 70 tours were taken up by the general public, community groups, international visitors to the University, and current and prospective staff members. The guides also participated in SA History Week, the South Australian Artists Festival (SALA) and the University of Adelaide Open Day.

Volunteer Program

The University of Adelaide Volunteer Program, under the patronage of Mrs Lindsay McWha, provides an integral link between the University and the wider community. It also adds to the richness of university life by involving a diverse range of people in a variety of activities.

The University of Adelaide Volunteer Recognition Event is held annually to coincide with South Australia's Volunteer Day. On Friday 6 June 2008 a morning tea was held in Bonython Hall, hosted by Mrs McWha and attended by a large number of volunteers from all campuses of the University. Other invited guests included the Chancellor, Vice-Chancellor and President, the Minister for Volunteers, the Hon. Jennifer Rankine MP and many senior staff. Radio Adelaide provided the keynote speakers for the event.

At the end of 2008, some 1606 volunteers were registered, contributing more than 156,000 volunteer hours.

The following areas are currently involved in the Volunteer Program:

- AFUW-SA Inc Trust Fund Academic Dress Hire Service
- Art and Heritage
- Barr Smith Library Volunteer Group
- CLPD Volunteer Support Scheme
- Development and Alumni
- Don Dunstan Foundation
- Florey Medical Research Foundation
- Freemasons Foundation Centre for Men's Health
- International Student Centre — Peer Support Program
- PCE English Language Centre
- Radio Adelaide
- Research Branch — Research Ethics and Compliance Unit
- University Archives Volunteer Group
- University of Adelaide Theatre Guild
- Waite Precinct Volunteer Program
- Western Region Enterprise Day (WRED) — Thebarton Campus



Waite Historic Precinct

The Waite Historic Precinct, which is listed on the State Heritage List and National Estate, comprises the internationally renowned Waite Arboretum, and Urrbrae House, an accredited museum. The Precinct offers a range of facilities and activities for the public, including tours. The Urrbrae House gardens, Waite Arboretum and Waite Conservation Reserve are open to the public every day of the year from dawn to dusk.

Urrbrae House

During 2008, action was taken to promote greater awareness of Urrbrae House, both on the Waite Campus and across the University, through new activities, such as lunch-time tours for staff. There was an increased range of community events — held in association with the Friends of Urrbrae House and other community groups — such as the Scottish ceilidh, concerts, a literary event, exhibitions and the Mitcham Council's Queen's Birthday Honours celebration.

The Urrbrae House interactive history program for primary schools continued to be a success. The free program is designed to enable primary students in Years 4–6 to step back into the recreated world of the 1890s. It provides an excursion option for a group of up to 30 students, with costumed guides taking students through a range of nineteenth century activities in Urrbrae House. Guides encourage students to think about how life was lived over a century ago and discuss aspects of South Australian history during the course of activities. In 2008, more historical artefacts and reproductions were acquired to enhance the depth and authenticity of the historical experience.

A school holiday event, 'Fun in 1901', organised by the Friends of Urrbrae House and supported by University staff, was held at Urrbrae House and gardens in October. Some 60 children aged 7 to 13 and 40 parents and grandparents attended, with a lot of positive feedback offered and requests to make it a regular event.

Waite Arboretum and Waite Conservation Reserve

In the Waite Arboretum, 67 new trees were planted, mostly additions to the experimental Dry Rainforest Demonstration Garden.

Arboretum guides conducted 31 walks for community groups, schools and the general public including special walks during the Fringe Festival, History Week and SALA (South Australian Living Artists) Week. Collaboration continued with Urrbrae TAFE. Seeds collected from the Waite Arboretum are being propagated using new technologies to provide trees for trialling by local governments as part of the TREENET Street Tree Trials.

In June, Death Cap fungus *Amanita phalloides* was discovered in the Arboretum by mycologist Pam Catchside. The mushroom was the first verified record of this species in South Australia. An immediate public warning was issued jointly by the University, Health SA and the Botanic Gardens of Adelaide. The last specimen appeared on 27 August and 94 specimens were collected and destroyed.

Horticultural multimedia personality Ms Sophie Thomson was appointed Patron of the Friends of the Arboretum. As part of the Fringe Festival, the Friends conducted various community events, including 'Manipulated', an exhibition in collaboration with Basketry SA which featured art and craft made from recycled Arboretum materials.

The very successful 9th National Street Tree Symposium, 'The Role of Trees and Arboriculture in the 21st Century', was held in September, attended by 300 delegates.

Friends of Waite Conservation Reserve held 15 working bees and a public lecture by Colin Harris, 'Environmental History of the Adelaide Hills'. A fauna survey was conducted by 25 volunteers over 8 days of intensive mammal and reptile trapping, bird counts and bat recording in collaboration with the Herpetological Society of South Australia and The Mammal Club — Field Naturalists Society of South Australia. Many species were recorded for the first time.

Some 110 volunteers work in Urrbrae House and gardens, the Waite Arboretum and the Waite Conservation Reserve and they continue to make a significant contribution to the overall benefit of the University and the community at large.



Property and Infrastructure

In 2008, the University delivered significant new capital works as part of the Building Life Impact program established under the University Strategic Plan (2008–2012).

Building Life Impact is a significant investment in the continuous improvement of the University's facilities and infrastructure, encompassing a program of major capital works that is the most ambitious building initiative in the University's history. Spread over four years from 2008, the program will enhance significantly the University's learning and teaching environment, strengthen its research capacity, and contribute to its environmental sustainability.

The delivery of capital works under Building Life Impact was led by the Infrastructure, Property and Technology Branch within the Division of Services and Resources. This branch operates under the

directorship of Ms Virginia Deegan, and was formed in March 2008 following the merger of Property Services and Information Technology Services.

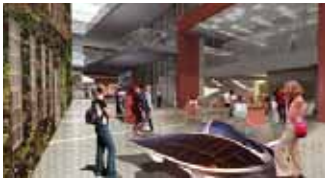
The new Facilities and Infrastructure Strategic Framework 2008–2012 was approved by University Council in December, aligning infrastructure plans with the strategic directions of the University. The Framework sets out physical space requirements in response to the significant growth targets outlined in the University Strategic Plan and identifies the key challenges for the University in terms of quantity of space, quality of facilities and infrastructure, and environmental sustainability.

As one of the State's largest employers and significant consumers, the University acknowledges its responsibility to minimise its ecological footprint and impact on the State's natural resources. In

addition to the sustainability goals of the Building Life Impact program, the Division of Services and Resources has also established the Sustainable Adelaide program. This program, in conjunction with the Sustainability Working Party, oversees and guides exploration of sustainable practices across the University, including involvement in state and federal schemes, and the transformation of business processes.

The University is engaged in several resource management activities to ensure that it is a leader in operational sustainability. In 2008, preliminary investigations were completed for an integrated Water Management Plan for the University. This plan will minimise the use of water in all parts of all campuses, and be supported by a communication and change management strategy to inform and educate staff and students with the objective of influencing behaviour.

Key infrastructure projects in 2008



Innova 21, the new Engineering Building

In 2008, work began on Innova 21, the new \$100-million Engineering Building at the North Terrace campus. Innova 21 will cater for the significant growth in students from the Faculty of Engineering, Computer and Mathematical Sciences and will provide more than 11,000m² of space for learning, teaching and research. The state-of-the-art building is designed to achieve a 6-Star Green Star Rating and is on schedule for occupation in May 2010.



School of Veterinary Sciences

A purpose built School of Veterinary Science is under construction at Roseworthy campus to provide facilities for the new program introduced in 2008. This facility will have space for undergraduate, pre-veterinary and postgraduate education and training for students, clinical research, as well as specialist diagnostic and treatment services.



Institute for Photonics and Advanced Sensing

In December 2008, the Federal Government announced \$28 million in funding to help establish a new Institute for Photonics and Advanced Sensing (IPAS) at the University. The disbursement from the Higher Education Endowment Fund (HEEF) contributes to the development of over 2000m² of integrated experimental laboratories for research in photonics and sensing. The facilities will also provide space for collaboration with industry and defence.



The Wine Innovation Cluster

The new Wine Innovation Cluster at the Waite Campus was officially opened on 19 November 2008, and is being hailed as the most dynamic mix of grape and wine researchers assembled in one precinct anywhere in the world. The \$32.6-million facility brings together the resources of the Australian Wine Research Institute, CSIRO Plant Industry, private research agency Provisor Pty Ltd, the South Australian Research and Development Institute (SARDI), and the University of Adelaide.



10 Pulteney Street

Work to refurbish the 10 Pulteney Street complex continued in 2008 and is well advanced. The refurbishment to eight floors of the 10 Pulteney Street building and two floors of the adjacent Marjoribanks Building will meet the needs of the Faculty of the Professions, providing for the co-location of faculty areas and upgraded facilities for staff and students.



Hughes Plaza Learning Hub

Planning for the development of a new Student Learning Hub at the North Terrace campus commenced in 2008. To be located next to the Barr Smith Library, the Student Learning Hub will contain lounge, project and study facilities and will create a vibrant, centrally located destination for all campus users. The new facility will centralise non-academic student support and administrative services in one key location and foster interdisciplinary interaction, facilitate informal and social learning, bolster student experience, and encourage on-campus activity.



Australian Plant Phenomics Facility

The establishment of a new purpose-built greenhouse and research facility at the Waite campus was announced in July 2008 and construction of the Plant Accelerator was due to commence in January 2009 at a cost of \$24.8 million. The largest and most sophisticated public facility of its type in the world, the Plant Accelerator will place Adelaide at the cutting edge of international plant research, and its rapid application to the agriculture and bio-plant industries. The facility is jointly funded by the University and the Commonwealth and State Governments under the National Collaborative Research Infrastructure Strategy.

Images are preliminary artistic interpretations for representational purposes



Financial Overview

UA

60

	Consolidated		University	
	2008	2007	2008	2007
	\$000	\$000	\$000	\$000

SUMMARY INCOME STATEMENT:

OPERATING REVENUE

Received under Higher Education Support Act	252,837	199,645	252,837	199,645
Learning and Teaching	132,470	105,474	132,470	105,474
Research Grants and Fees	129,212	106,188	122,544	100,440
Research - Other	20,222	21,260	20,222	21,260
Other	102,778	103,570	65,159	69,973
Total operating revenue	637,519	536,137	593,232	496,792

OPERATING EXPENSES

Salaries, superannuation and related expenses	319,909	279,032	308,094	269,710
Non salary expenses	285,365	224,410	250,346	193,209
Total operating expenses	605,274	503,442	558,440	462,919

OPERATING RESULT

	32,245	32,695	34,792	33,873
Operating Margin	5.1%	6.1%	5.9%	6.8%

SUMMARY BALANCE SHEET:

Total Assets	1,071,168	1,025,963	1,060,065	1,014,212
Total Liabilities	196,132	160,396	192,885	157,836
NET ASSETS	875,036	865,567	867,180	856,376
Current Ratio	1.4	1.5	1.2	1.3
Cash and Bank Bills	68,453	81,414	63,456	74,998

The University of Adelaide Council has adopted two principle financial targets:

An operating margin no less than 3% (Operating result as a percentage of total operating revenue as shown in the income statement)

A current ratio of at least 1.0 (Ratio of current assets to current liabilities as shown in the Balance Sheet).

The University continued to achieve these targets in 2008.

Financial



Overview

The University of Adelaide

South Australia 5005

Australia

telephone: +61 8 8303 4455

CRICOS Provider Number 00123M

Produced by the Marketing and Strategic

Communications Branch

Executive Editor: John Edge

Printing: Fivestarprint

ISSN 0729 - 9885

www.adelaide.edu.au