



Prospective Students Office



SATAC Metropolitan Counsellors' Briefing July 2009

Sally Owen

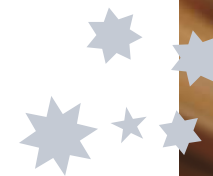
Access and Equity Officer

Prospective Students Office

08 8303 8317

sally.owen@adelaide.edu.au

Life Impact The University of Adelaide





Professions Hub

- At a cost of \$49 million and located on the corner of Pulteney Street and North Terrace, the Hub has been developed to house facilities and Student Services for the Faculty of the Professions.
- Facilities include; a student lounge, kitchen, learning support services, and numerous computing facilities with wireless network access.
- An outdoor area and café, with casual seating and tables will create a social and interactive learning environment for the students.
- The Hub will have a glass sky-bridge and glazed atrium, linking the existing Professions tower and Education building.





New Engineering, Mathematical and Computer Science Building

- At a cost of \$100 million, the nine level building is the largest construction project in the University's extensive development program and will enable students to utilise teaching and research resources that are among the best of their kind anywhere in the world.
- The building has significant Environmental Sustainable Design (ESD) aspirations and is aiming to achieve South Australia's first six star Green Star rating for an education building from the Green Building Council of Australia.
- The building is expected to be in use by students in semester 2 2010.





School of Veterinary Science

\$37 million program for the development of infrastructure required for the new School of Veterinary Science at Roseworthy campus.

- **Stage One** is complete and included lecture theatre audiovisual upgrades, the creation of five new tutorial rooms and the establishment of the School office.
- **Stage Two** has been completed and includes laboratory audio-visual and furniture upgrades, and the refurbishment of the first 20 staff offices. There will also be improvements to the equine, cattle and sheep facilities.
- **Stage Three** is to be completed by mid 2010. This will include specialist anatomy, physiology and surgical skills teaching laboratories with associated ancillary areas, and a multi purpose specimen museum/e-learning centre.
- **Stage Four** is to be ready by late 2010, encompasses a state-of-the-art veterinary teaching hospital, a pathology suite, clinician offices and a multipurpose facility that will also form the basis of a continuing education resource for the South Australian veterinary profession.





Hughes Plaza Learning Hub

- \$30 million project
- Aim to provide a 'community' centre offering
 - ✓ learning facilities,
 - ✓ information kiosks,
 - ✓ exhibits and displays,
 - ✓ food services and
 - ✓ entertaining areas for informal and formal events.
- It will integrate retail and public services with new learning facilities, student services and iconic facilities such as the Barr Smith Library.
- The development, to begin in 2010, will bring together the leading thinking on educational space planning and has engaged Dr Ken Fisher as the project's educational space planner.





Website support for applications

whatsyourpreference.com

- This website has been created to take the student on a journey from Open Day - where they can source valuable information and talk to staff - right through to the 'Change of Preference' period and on to O'Week.
- By registering their details on the website, the student can opt to receive reminders about important dates, and electronic communications tailored to their study preferences.
- As a teacher or school careers counsellor, we welcome *you* to sign up and receive our updates also.





IT Enhancements and New Initiatives

Student Portal

- Online service delivery channel from early 2010, at a cost of \$1million
- It will provide students with a single entry point to everything they need on the university web site and will be configurable by the students.
- It will include a fully loaded personal calendar and will provide links to gmail, myuni etc

Google Applications

- First Go8 university and first in the state to make this facility available to students
- 10,300 students have opted for the application offering mail storage, calendar and chat functions





Fairway Access Scheme

- Schools whose students are underrepresented at university are eligible to receive bonus points under the Fairway Access Scheme.
- Metro Fairway Access schools are determined by the participation rate of their students in South Australian universities.
- For all other schools across Australia the University refers to the Australian Bureau of Statistics' (ABS) Australian Standard Geographical Classification (ASGC)
- Applicants under the Fairway Access Scheme have 6 bonus points automatically added to their university aggregate.





Fairway Equity Scheme

- Students from South Australian non-Fairway schools, who hold a **School Card** or receive **Youth Allowance** and who are applying to study at the University of Adelaide, will be eligible to receive bonus points under the new Fairway Equity Scheme.
- Students will be required to fill in an **individual application** form and submit their form to the Student Centre no later than Friday 4 December.
- Once applications have been assessed, the University will send a list of those who meet the criteria to SATAC for bonus point allocation.
- Applicants under the Fairway Equity Scheme have 6 bonus points automatically added to the university aggregate.
- www.adelaide.edu.au/student/admission/year12/





Scholarships

- The **Adelaide Undergraduate Scholarship Scheme**—\$10 000 pa for a maximum of 4 years and indexed at 3% to **ALL** students achieving a unbonused score of 99.95, replacing the Merit Scholarship Scheme.
- **Andy Thomas Scholarship** increased to \$6000 per year for up to 4 years, HECS exempt
- **Principals Scholarships** increased to 160
- **Adelaide Access Scholarships** increased to \$2500pa for 4 years with a focus to support students from a range of equity groups, particularly students from rural and isolated areas.
- Unspent scholarship funds will provide further start up Scholarships of \$2000pa for low SES students not receiving any other scholarship from the university
- www.adelaide.edu.au/scholarships/ from September 2009 onwards.





What's New – 2010 Admissions

- STAT test will apply from age 18 from February 2010
- Recognition of completed qualifications from all Registered Training Organisations (RTO), not just TAFE
- English Language Subject requirements for International Students Studying Year 12 in Australia:
 - Pass mark in ESL or other English subject
- No changes to Medicine, Dentistry, Oral Health
 - Oral Health requires UMAT. Students who relied on UMAT guide can contact the Faculty for help and advice.





New Programs

Bachelor of Agricultural Sciences

- supersedes the Bachelor of Agriculture, delivered at Roseworthy, and the Bachelor of Science (Agricultural Sciences) programs delivered at Waite
- takes into account the changing needs of industry and broadens the range of agricultural career paths available to our graduates.





New Programs

Bachelor of Viticulture and Oenology

- incorporates courses in both viticulture and oenology
- students completing the course qualify as both a viticulturist and winemaker
- leads to deletion of Bachelor of Science (Viticultural Science) and Bachelor of Oenology





Faculty of Sciences: focus and name changes

- **Bachelor of Food and Nutrition Science (formerly Bachelor of Food Science and Technology)**
The new name better reflects the program mix of theoretical and practical science
- **Bachelor of Science (Pre-veterinary) (formerly Bachelor of Science (Animal Science) Pre-veterinary)**
Reflects that this is the pathway to becoming a veterinarian.





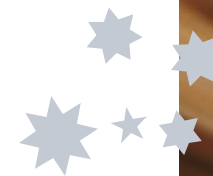
Health Sciences

New pathways to Nursing:

- As an enrolled nurse with the Nurses Board of South Australia
- By tertiary transfer from a Health Science related degree

Pre-requisites for Medicine from 2012:

- Any one of chemistry, biology or maths studies





Humanities & Social Sciences

- **Bachelor of Social Sciences**

Revised and revitalised for 2010-strong focus on applied social research, policy writing and analysis following consultation with key employers

- **Bachelor of Development Studies**

Offers professional practicum in a developing country

- **Internship Program**

Currently offered in Arts, Parliamentary, Environment and Media and will extend to merit based internship in Social Sciences in 2010

- **Better promotion of alternative pathways to HUMSS programs**





New Humanities & Social Sciences courses for 2010

- Translation for Chinese speakers
- Social Research
- Latin American Literature and Society
- Living with uncertainty: adapting to Global Change
- Power, Passion and Greed: Georgian London (1714-1830)
- Principles of Environmental Economics
- Social Sciences and Policy
- Cities in the Developing World
- Spanish Literature and Society
- The Ancient World of Film
- The Art and Craft of Creative writing
- The Practice of Australian Politics
- Global Environmental Politics
- Aboriginal People and the Criminal Justice System
- Art Against Society: Censorship and Iconoclasm
- Culture and Human Rights
- Development Studies- professional practice
- Digital Games, Culture and Co-Creation
- Games, Festivals and Leisure in Ancient Greece and Rome
- Geographies of Food and Agriculture
- Globalisation and Culture: Anthropological Perspectives
- Governance and Sustainable Development
- Key issues in Asian Studies





Changes in the Prospective Students Office

- Kiri Hagenus, Acting Manager (until November) 8303 3225
- Karen Pichlmann, Manager (from November) 8303 3225
- Tracy Dancer, Prospective Student Adviser 8303 8257
- Tony Duggan, Prospective Student Adviser 8303 6364
- Access and Equity Officers:
 - Sally Owen 8303 8317
 - Michelle McKinnon (from September) 8303 8317
- Assistant Prospective Student Advisers:
 - Jit Loh 8303 8299
 - Angela Ballantyne 8303 8381
 - Jason McArthur 8303 8381

