

CAGE SIZES – ANIMAL HOUSING LEVELS

SOP No: MSAH #35
Prepared by: Pacita Wissell and Denise Noonan
Version: E
Reviewed: 20/06/2012
Authorised By: Andrew Bartlett, Manager and Denise Noonan,
Animal Welfare Officer

Signed: _____

Date: 11/12/12

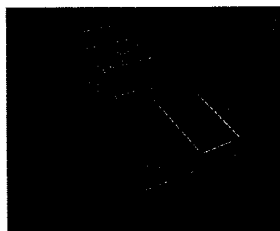
Signed: _____

Date: 11/12/12

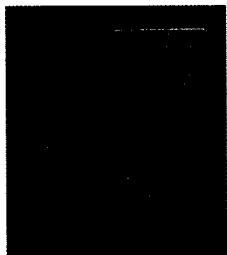
PLEASE ENSURE THAT OVERCROWDING DOES NOT OCCUR BY ADHERING TO THE FOLLOWING GUIDELINES.

(*Guidelines are based on specific assumptions. Numbers will be modified if there is a welfare concern i.e. pregnant females or the male will be separated for the welfare of the adults or offspring. Guidelines correspond with recommendations from the "Department of Primary Industries, Code of Practice for the Housing and Care of Laboratory Mice, Rats, Guinea Pigs and Rabbits")

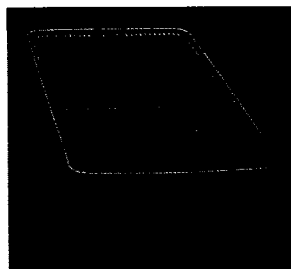
MICE:



Small Cage 5 mice / cage
Length 30cm x Width 12cm = 360cm²
Breeding cage: Not Permitted

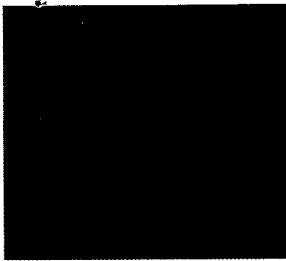


Long, narrow cage 7 mice / cage
Length 45cm x Width 12cm = 540cm²
Breeding cage 1M:2F*

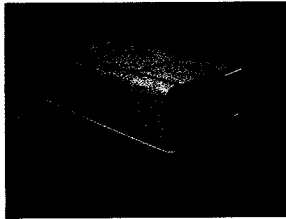


Large Mouse cage 14 mice / cage
Length 41cm x Width 25cm = 1025cm²
Breeding cage 1M:3F*

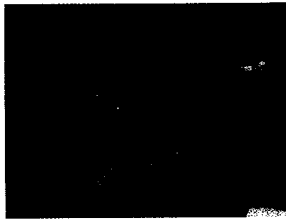
Document	MSAH#35 Cage Stocking densities	Effective Date:	20/06/2012	Version E
Authorised by:	Branch Manager & AWO			
S:\DVCRLaboratory_Animal_Services\SOPs\MSAH\AEC Guidelines\MSAH#35 Cage Stocking densities.doc		Print Date	11/12/2012	Page 1 of 2



Sml Micro-isolators 5 mice / isolator
Length 27cm x Width 16cm = 432cm²
Breeding cage 1M:1F (due to reduced air exchange)



Lge Micro-isolators 10 mice / isolator
Length 27cm x Width 16cm = 432cm²
Breeding cage 1M:1F (due to reduced air exchange)

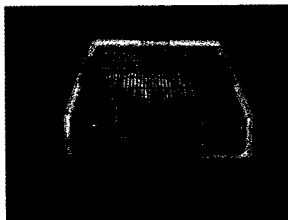


Techniplast IVC 7 mice/IVC
Length 39cm x Width 16cm = 500cm²
Breeding cage 1M:2F*

RATS (maximum numbers / cage)



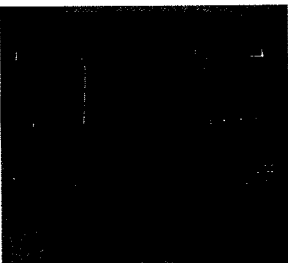
Medium Rat cage 2 rats/cage (<150g)
with high top lid 1 rats/cage (>150 – 500g)
Breeding cage: Not Permitted
Length 27cm x Width 16cm = 432cm²



Large, Drop Front 12 rats/cage (<150g)
with flat top lid 8 rats/cage (150 – 350g)
>350g Not allowed
Breeding cage: Not Permitted
Length 59cm x 31cm = 1829cm²



Large, Drop Front 12 rats/cage (<150g)
with high top lid 8 rats/cage (150 – 350g)
6 rats/cage (350 – 550g)
4 rats/cage (>500g)
Breeding cage 1M:1
Length 59cm x 31cm = 1829cm²



IVC, Double Decker 12 rats/cage (<150g)
8 rats/cage (150 – 350g)
6 rats/cage (350 – 550g)
4 rats/cage (>500g)
Breeding cage 1M:1
Length 46.2cm x 40.3cm = 1862cm²

Document	MSAH#35 Cage Stocking densities	Effective Date:	20/06/2012	Version E
Authorised by:	Branch Manager & AWO	Print Date	11/12/2012	Page 2 of 2
S:\DVCR\Laboratory_Animal_Services\SOPs\MSAH\AEC Guidelines\MSAH#35 Cage Stocking densities.doc				