

MCE
 Molecular and Cellular Endocrinology

Special Issue
Endocrine Cell Lines

Guest Editors
 W.E. Rainey
 R.J. Rodgers

SEMINARS IN
Reproductive Medicine

Volume 24
 Number 4
 September 2006
**Extracellular Matrix
 in the Ovary**

Editor in Chief
Bruce R. Carr, M.D.

Guest Editor
Raymond J. Rodgers, Ph.D.

Vol 129 • No 1 • January 2005
Reproduction
 The Journal of the Society for Reproduction and Fertility

www.reproduction-online.org
 ISSN 1470-1626 (paper)
 ISSN 1741-7899 (online)

ISSN 1360-9947
Molecular Human Reproduction

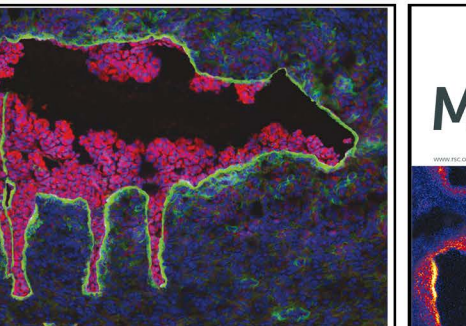
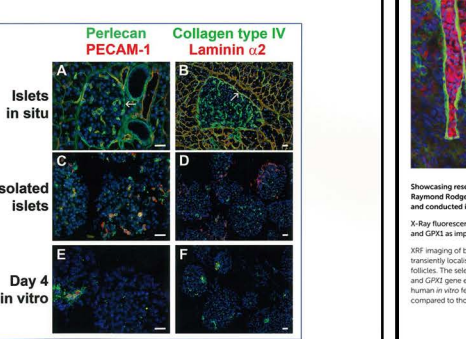
Volume 13, Number 9, September 2008
 Volume 12, Number 10, October 2008
 www.ambika.oxfordjournals.org
OXFORD OPEN

ESHRE
 European Society of Human Reproduction and Embryology
OXFORD JOURNALS

Reproduction, Fertility and Development
 Volume 19(3) 2007

www.publish.csiro.au/journals/rfd

Volume 23, Number 1
CELL TRANSPLANTATION
 The Regenerative Medicine Journal
 ISSN 0963-6897
 E-ISSN 1555-3892



Showing research from the groups of Hugh Harris and Raymond Rodgers at the University of Adelaide, South Australia, and conducted in part at the Australian Synchrotron.

X-Ray fluorescence imaging and other analyses identify selenium and GPXI as important in female reproductive function

XRF imaging of bovine ovaries showed that selenium was transiently localised to specific cells in developing ovarian follicles. The selenium-containing species was identified as GPXI and GPXI gene expression was elevated in related cells from human in vitro fertilisation samples that resulted in a pregnancy, compared to those that did not.

Volume 7 | Number 5 | May 2015 | Pages 721-918
Metallomics
 www.rsc.org/metallomics



BioMed Research International

New Advances in Reproductive Biomedicine

Guest Editors: Irma Virant-Klun, Jeroen Krijgsveld, John Huntriss, and Raymond J. Rodgers

