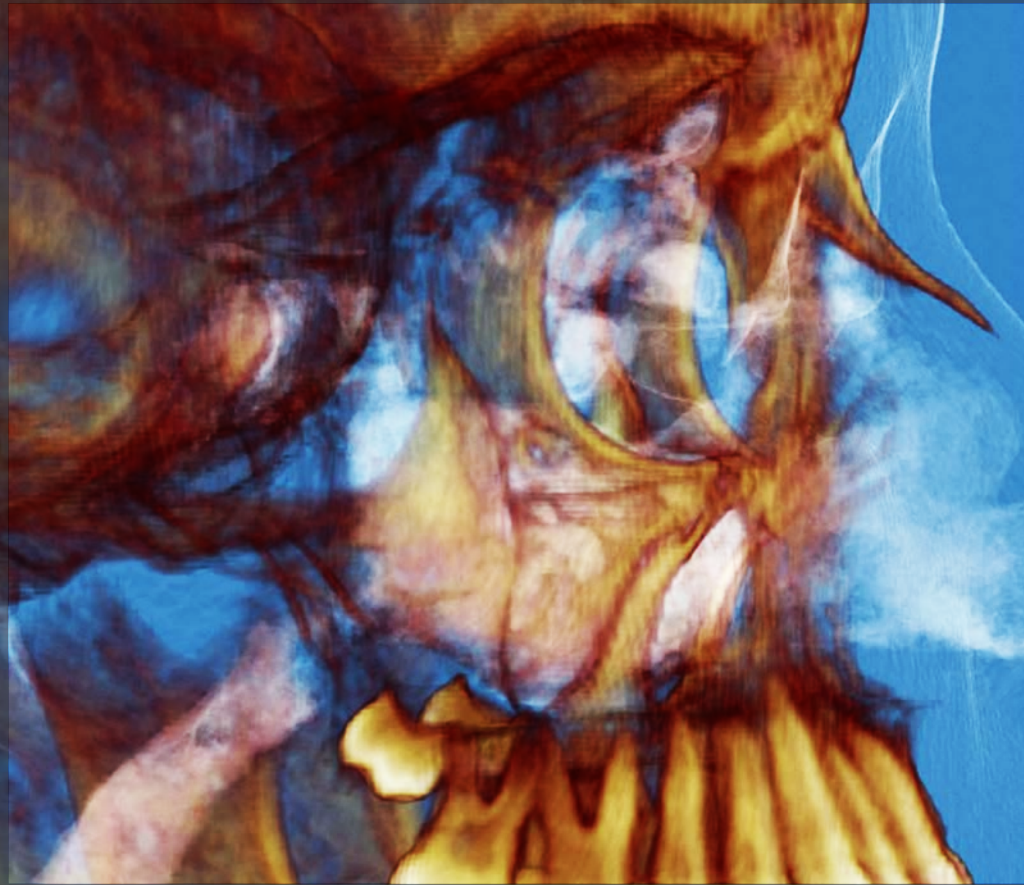




THE UNIVERSITY
of ADELAIDE



UNIVERSITY OF ADELAIDE CONTINUOUS DEVELOPMENT PLAN, DENTAL SCHOOL

Sustaining and enhancing value



The vision is to produce the most sought after practitioners who actively contribute, not only to oral health, but also to creating positive health outcomes more generally as part of a broader team.

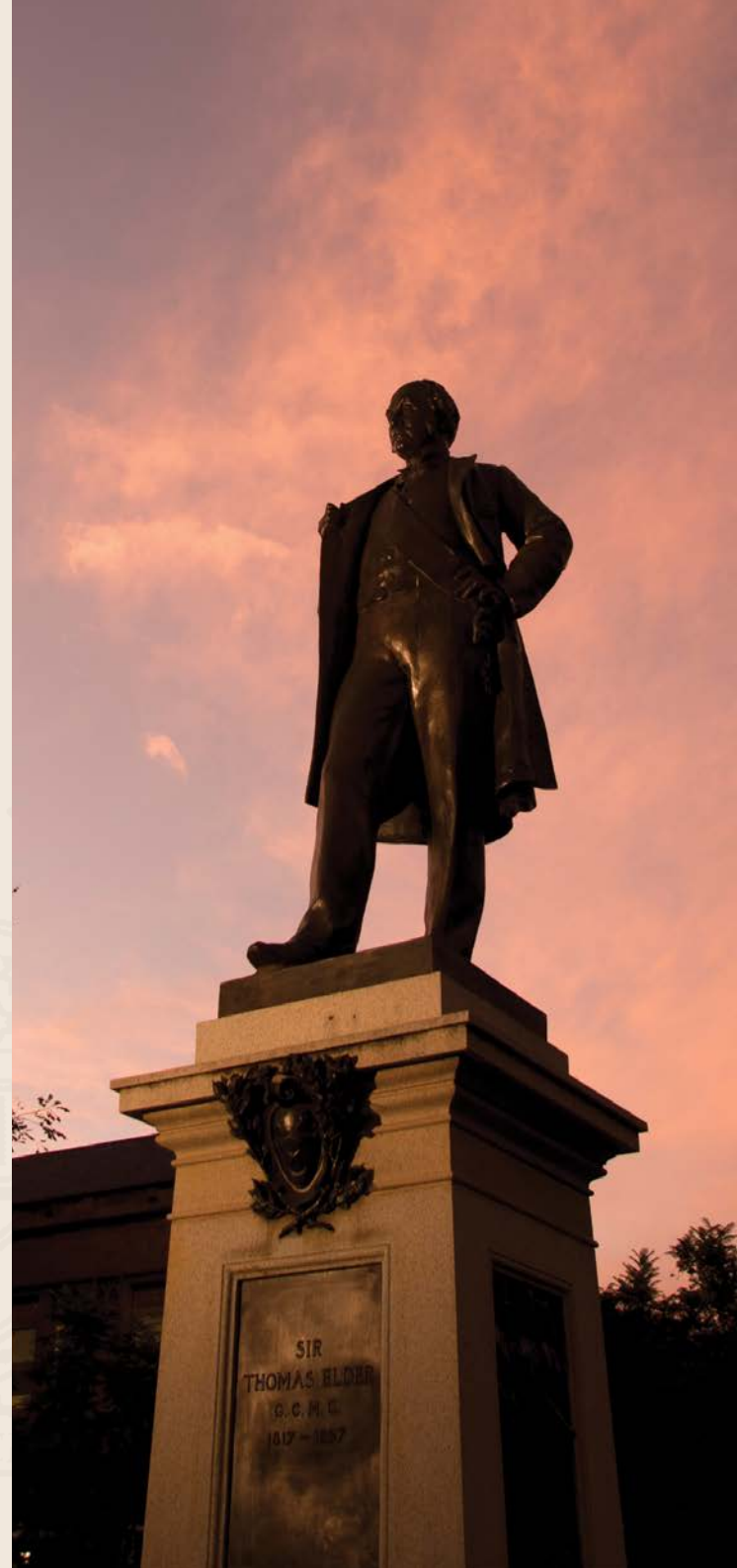
This will be underpinned by a strong research program that informs the school's curricula and translates to positive developments in health care.

In line with core values, therefore, we look to attract leading academics, both for teaching and research, whilst at the same time fulfilling our commitment to the state of South Australia, in particular disadvantaged communities through The Adelaide Outreach Clinic and Indigenous Oral Health Unit

Greatly encouraged by the major impact of the Paul Lee bequest in 2017, we seek to build a permanent ring-fenced endowment that supports the ongoing needs for students and staff, in perpetuity.

As well as generating important outcomes, it will offer certainty and importantly autonomy in a financial structure which is currently over-reliant on the volatility of research grant applications, student enrolments and external influences such as government actions and restrictions.

From the Dean and Head of School, Richard M. Logan





CORE VALUES

To recruit and retain the most able students, regardless of background or financial means; and to deliver optimum outcomes for the benefit of themselves, the State of South Australia and dentistry world-wide

To recruit and retain top quality academic staff; and particularly those home-grown from Adelaide Dental School, who wish to pursue a career in teaching and research

To develop and promote the School's international profile and reputation, reflected in an enhanced world ranking, contributing to the overall standing and contribution of the University of Adelaide

To increase ongoing financial support to the School's Community Outreach Dental Program and the School's Indigenous Oral Health Unit to ensure that these programs are financially sustainable

ALUMNI AND DEVELOPMENT

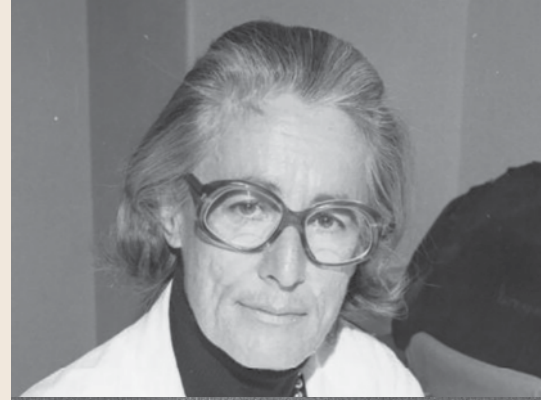
The Dental School asks support from its alumni and friends collectively to underwrite its value, reputation and standing, in perpetuity.

It is part of a university-wide programme across all the Schools of Study to grow the worth of the whole by raising the individual outcomes of its most important constituent parts.

Complementary to the fundraising activities of DREF (Dental Research and Education Fund); and through a programme of class reunions, the School connects with consecutive alumni cohorts, year-on year. It builds a continuous relationship that strengthens the mutual bond, re-visiting the student experience that delivered a formative education and contributed to their professional progress.

The development programme underlines the importance of endowment giving which, as it grows, strengthens the School's position permanently and continuously. The benchmark gift of \$25,000, payable over a period up to ten years, qualifies the donor for the Board of Benefactors' life membership (Dental School Foundation) and for an annual invitation with spouse, partners and guests to the Benefactors' *Festum*.

Looking down the development pathway, a number of key requirements are highlighted in this document, some of which (most notably Scholarships, teaching and Research) can be funded through alumni cohorts giving at Board of Benefactors level, often in the follow-up to a class reunion. Others (Evolution Funding initiatives) will depend on very major gifts to achieve transformative outcomes.



THE ADELAIDE DENTAL SCHOOL

The Adelaide Dental School prides itself on its history and the impact that it has made both nationally and internationally.

Notable are the works of Dr Elizabeth Fanning who published the first fluoride toothpaste trials that were conducted in Adelaide in 1967, Professor PR Begg who revolutionised the discipline of orthodontics, Thomas Draper Campbell, foundation professor and anthropologist, and Milton Sims, an orthodontic pioneer who devoted his life to teaching, research and clinical service for the benefit of the University.

The School offers programs from undergraduate through to research degrees, its flagship being the 5-year Bachelor of Dental Surgery; but also offering, over 3 years, the Bachelor of Oral Health. A further suite of dental specialty training programs allow postgraduate graduates to become registered specialists in various disciplines.

Its research program is focussed on broad themes that make a significant impact on the oral health of the community. The target is to become the leading school for dental and oral health research in Australia. Particular strengths include population oral health, including indigenous; translational research; dental materials; cancer; and oral health impact on systemic health.

The School is currently ranked number 32 by subject in the QS World University Rankings (2018) and number 1 in Australia and New Zealand.

It has also developed a strong Community Outreach Program, supporting disadvantaged and homeless populations in the Adelaide area. The School is also proud of its Indigenous Oral Health Unit (IOHU) which undertakes research and research education that is internationally recognised to be of the highest quality.



*Ranked number
32 by subject in the
QS World University
Rankings (2018)*



*number one in
Australia and
New Zealand.*



THE DENTAL SCHOOL DEVELOPMENT PLAN

Everything that adds value to the School's outcomes is enhancing its reputation and standing worldwide - targeted scholarships at key points in the student pathway, placements, visiting professors, staff support, such as travel and Early Career Research grants, and attracting world class professors.

The ability to underwrite these predictably and permanently will continuously build its capability to rank amongst the very best.

By supporting the development plans, Alumni can underwrite either individually or in cohorts elements of the dental programme that may be vulnerable at the margin, but which are crucially important in attracting and retaining the best students, teachers and researchers.

The development plan comprises three individual endowment funds; *The Student, Teaching and Research Support* to enhance permanently the quality of scholarship, in those areas; the *Evolution Fund* for transformative developments and the *Community Outreach* to fulfil the School's commitment to the local community, particularly those with economic disadvantage.

Student, Teaching and Research Support Fund

Key elements of the development plan are outlined below and summarised for annual and endowment costs on page 11.

Undergraduate scholarships to students from rural backgrounds to encourage a career in the dental profession are part of the 30-year partnership with the South Australian Dental Service. Although the School's currently commands strong applications at undergraduate level, in number and ability, and both domestically and from overseas, there is still a need for such targeted student support. Valued at \$10,000 per annum, and offered to 2 students per year, they facilitate accommodation and provide support for equipment and materials required during studies for the duration of their 5 year program.

An endowment fund of \$2 million to underwrite this commitment would make an important contribution to one of the core expenditures that the School incurs. Over a ten year period, it can be met through 16 Board of Benefactor gifts annually, from consecutive year-group cohorts (see page 12).

Student Research Scholarships will support honours degree students and their supervisors by financing research costs, including travel to relevant meetings and conferences, to present results of their research. It will attract the best students into the School's honours degree programs and feed pathways for potential higher degree by research students (i.e. MPhil, PhD). The fund would be administered by the School's Research Committee.

With the ability to offer 10 Students \$2,500, a single endowment gift of \$500,000 (with naming rights) or 20 Board of Benefactor level gifts will cover the entire programme.

Specialist Training Programs need funding support for students undertaking postgraduate training on a 3-year coursework program leading to a Doctor of Clinical Dentistry. The qualification costs \$40,500 per year for Australian domestic students; and, at this point, the interstate competition for the most able students is at its strongest. The aim, therefore is to offer 2 scholarships per year, competitive across all disciplines in the dental school, to cover the 3-year program, attracting the best students from across the country.

When in a steady state with six scholarships running concurrently, the endowment cost will be close to \$5 million. This may most appropriate for a major gift or legacy to cover the \$800,000 for a single scholarship; or cohorts of Board of Benefactor gifts.

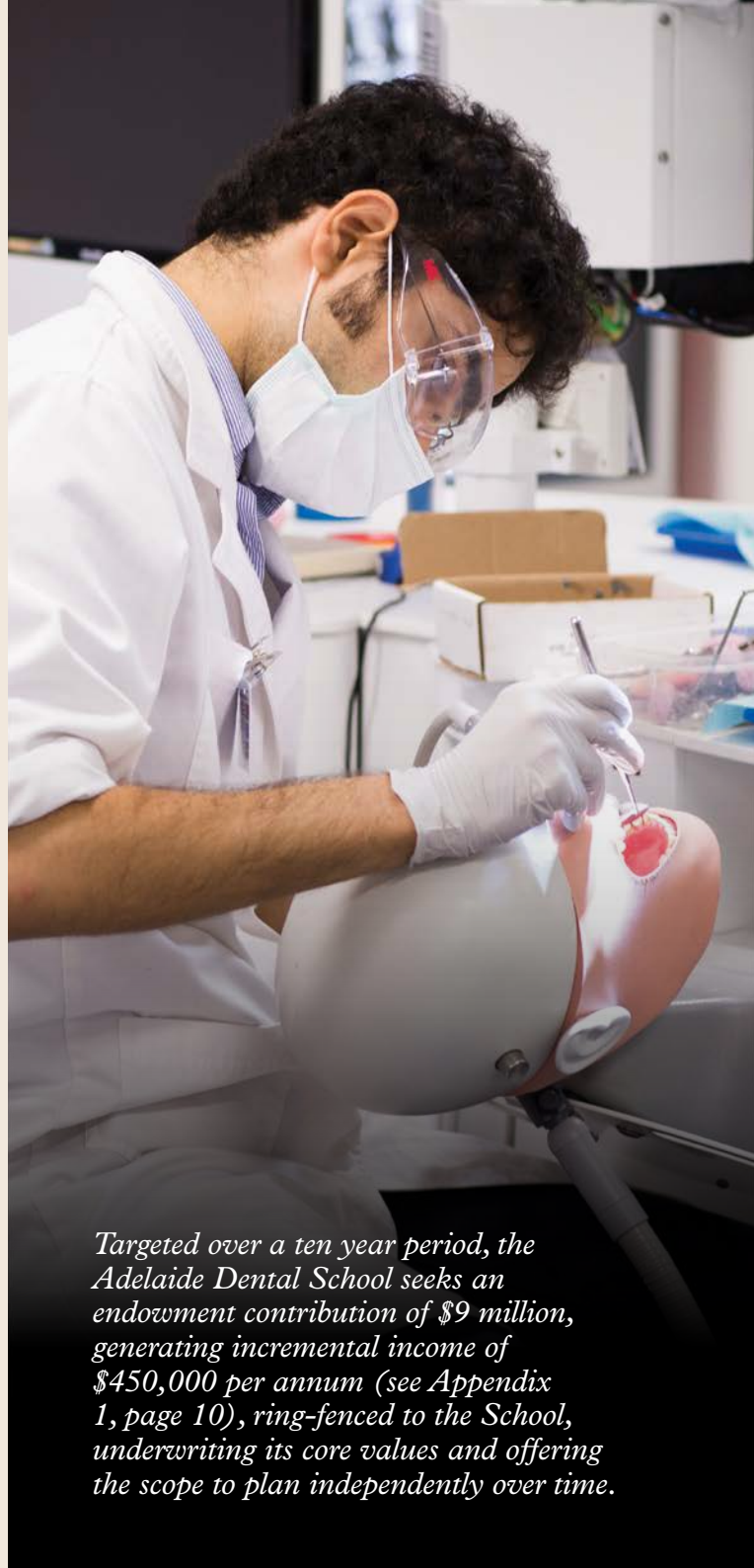
Staff development funding is important to support continuing professional development for those staff who do not have access to traditional university supports through faculty travel grants or through the university's education academy.

This fund would annually support two travel scholarships of \$5000 to enable attendance at an international conference or facilitate a visit to another institution for professional development in an area relevant to their discipline. This will help attract and retain the best staff to the School. An endowment of \$200,000 would allow the School to offer this funding year-on-year and could be underwritten by a cohort of eight Board of Benefactor gifts.

Visiting Professorships are integral to rising in international rankings, and to developing strong international links and collaborations.

Endowment funding to support professorships in specialist areas will complement the significant contribution from the Milton Sims Orthodontics Professorship. It would allow the specialist disciplines within the school rotationally to invite a visiting international academic to spend time in the school to develop research opportunities, be involved with teaching both undergraduate and, importantly, postgraduate students and also potentially participate in their assessment.

The fund would support travel and accommodation costs for a 1 month visit to the School, \$30,000 annually. A single endowment gift of \$600,000 (with naming rights), or 24 Board of Benefactor gifts, will endow such an appointment in perpetuity.



Targeted over a ten year period, the Adelaide Dental School seeks an endowment contribution of \$9 million, generating incremental income of \$450,000 per annum (see Appendix 1, page 10), ring-fenced to the School, underwriting its core values and offering the scope to plan independently over time.

Dentistry Evolution Fund

A key factor in the ability of the School to rise in the international rankings is a strong research profile.

Chair in Oral Health Research Innovations and Technology:

In order to address the challenges of the future, the School aspires to appoint a Chair in the area of Oral Health Research Innovations and Technology that will develop overarching initiatives to bring together the diverse research interests already in the School, to develop collaborative opportunities and to promote translational research in the school. The position will also place oral health firmly in the context of general health and highlighting the links between oral health and systemic disease.

This will make our Dental School highly relevant and responsive to the needs of the community, the profession and ensure that the School is competitive for research funding opportunities and help to attract the best postgraduate students from around the country and the world.

The Oral Health Innovations Conference will be a biennial event that showcases the research strengths of the Adelaide Dental School raising its profile both nationally and internationally. Drawing on its location in the Adelaide Biomed Precinct, this will attract people from around the country, as a means to showcase research and biomedical innovations in oral health.

At a cost of \$150,000 per conference, an endowment of \$1.5 million will cover the expenditure for holding in every other year.

Dental Outreach Fund

The Community Outreach Dental Program provides services for people who have suffered homelessness, or have difficulty accessing conventional care. Driven by the Adelaide Dental School, it attends to hundreds of patients—and provides our students an additional 1040 clinical hours—every year

The clinic relies on many University of Adelaide staff and, importantly, private dentists who volunteer their time to provide this valuable service. In order to ensure security for this important part of the curricula and also for the community who directly benefit from the clinic, \$120,000 per year is required to support the unit, and endowment of \$1.2 million. Although this has historically been funded on a hand-to-mouth basis, through a number of key individual efforts, it could be permanently secured from six segment gifts of \$200,000 each.

The Adelaide Dental School's Indigenous Oral Health Unit focusses specifically on the Aboriginal and Torres Strait Islander people and is concerned with Indigenous oral health, access to dental care, and provision of dental care to this disadvantaged population.

The Unit has plans to enhance significantly its scope and coverage, needing an annual injection of \$200,000 per year to provide financial certainty for the unit to maintain the necessary infrastructure and the support required for its research activities.

MAKING A GIFT TO THE ADELAIDE SCHOOL OF DENTISTRY

Any gift to the Adelaide Dental School is ring-fenced to supporting the development plan as outlined in this document.

The Dental School Endowment Fund supports the core needs for both students and research, strengthening the ranking, reputation and autonomy of the School with underpinning independent income. But donors can also singly choose to underwrite a substantial proportion of one of the Dentistry Evolution options.

Gifts of \$25,000 or more (payable over ten years) qualify for Board of Benefactors at the point of pledge. They are particularly appropriate to the Foundation Fund which can, in a relatively short period of time, and in conjunction with like-minded dental graduates, make a number of affordable gifts, significant to both the School and University.

Amount	Instalment payable				Higher rate tax		
	Annually (five years)	Annually (eight years)	Monthly (five years)	Monthly (eight years)	Net Cost 32.5%	Net Cost 37%	Net Cost 45%
\$25,000	\$5,000	\$3,125	\$417	\$260	\$16,825	\$15,625	\$13,750
\$100,000	\$20,000	\$12,500	\$1,667	\$1,042	\$67,300	\$62,500	\$55,000
\$250,000	\$50,000	\$31,250	\$4,167	\$2,604	\$168,250	\$156,250	\$137,500

The table above shows the giving costs for Board of Benefactors and above, with the implications of higher rate tax relief and gifts made over time. Over an eight year period, Board of Benefactors can be achieved with a monthly gift of \$260, costing an equivalent of as little as \$13,750 (\$143 per month) in the maximum higher rate tax band.

Net of tax contributions are provided as examples calculated for current tax rates at the time of writing. Donors should seek their own tax advice.

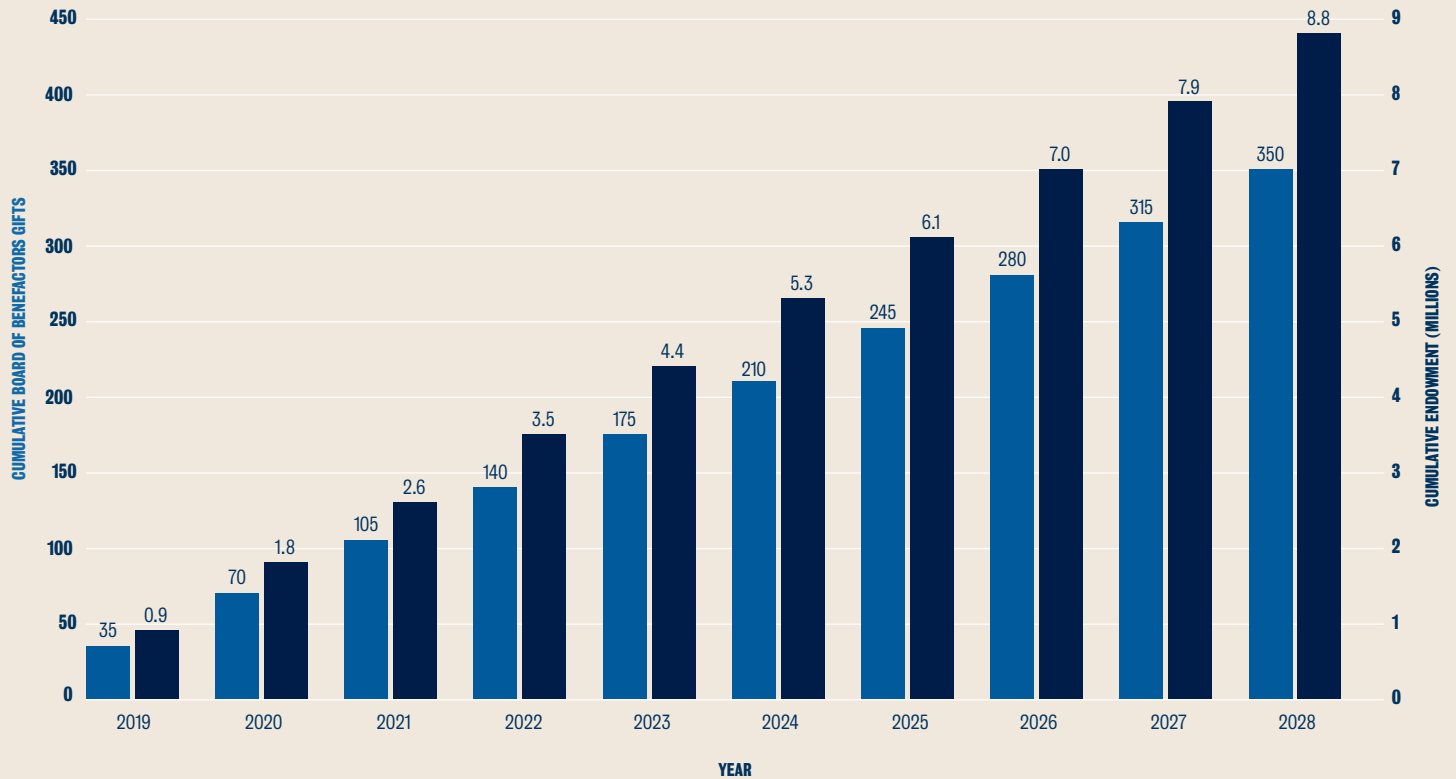
APPENDIX 1: ENDOWMENT SUMMARY

Adelaide Dental School development targets

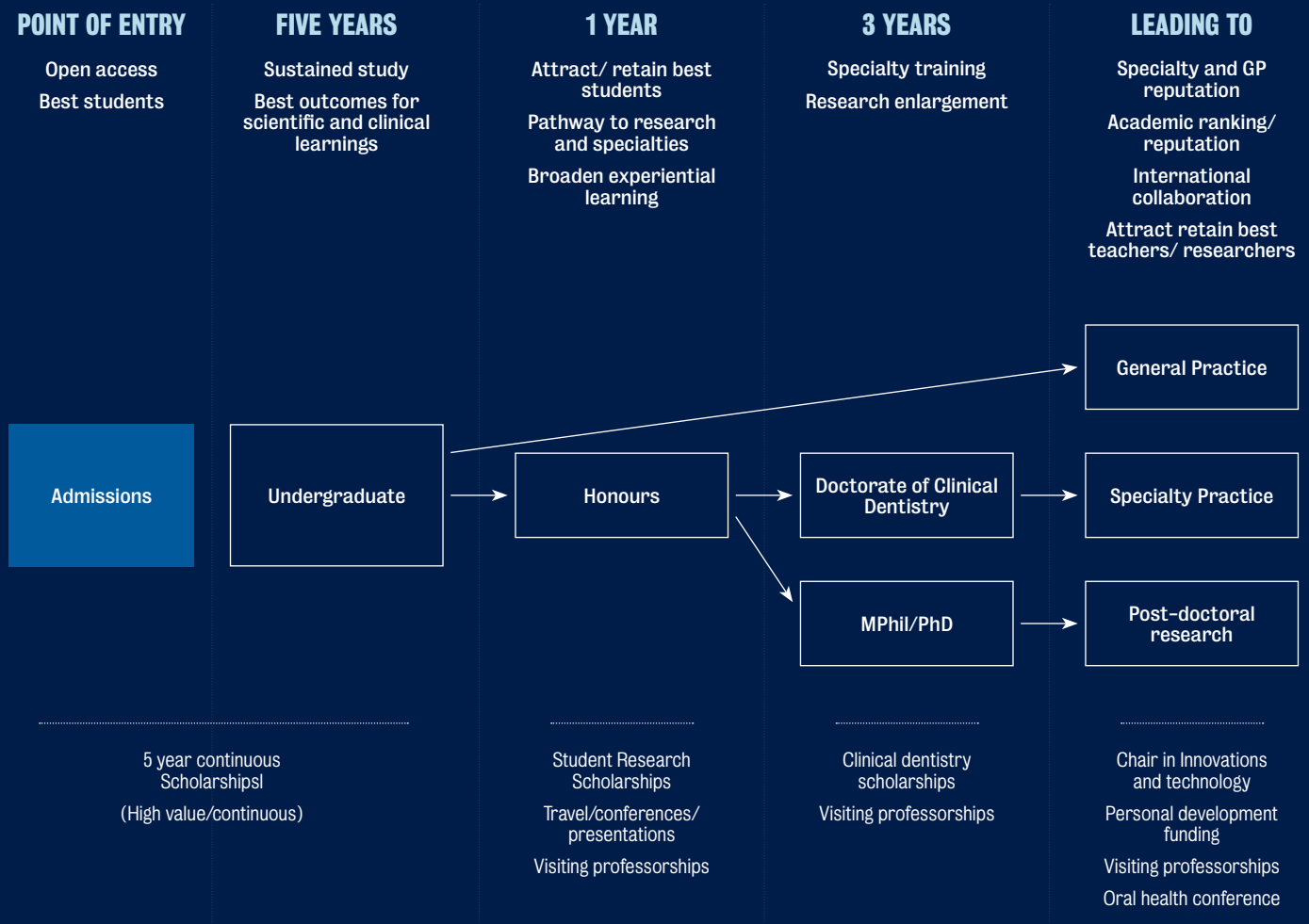
Student Teaching and Research Funds	Annual Cost (in steady state)	Endowment (in steady state)	
Student support scholarships (2 per annum for five years)	\$100,000	\$2,000,000	
Honours (10 per annum for one year)	\$25,000	\$500,000	
Specialist training awards (2 per annum for three years)	\$243,000	\$4,860,000	
Staff development awards (2 per annum for one year)	\$10,000	\$200,000	
Visiting Professors (2 per annum)	\$60,000	\$1,200,000	
		\$8,760,000	
Evolution Funds			
Chair in Oral Health Research Innovations and Technology	\$250,000	\$5,000,000	
Oral Health Conference (every other year)	\$75,000	\$1,500,000	
		\$6,500,000	
Dental Outreach Fund	Annual Cost (per segment)	Endowment (per segment)	Cost (total)
CODP (six segments)	\$20,000	\$400,000	\$2,400,000
IOHU (six segments)	\$40,000	\$800,000	\$4,000,000
		\$6,400,000	



ADELAIDE DENTAL SCHOOL ENDOWMENT TARGETS (2019-2028)



UNIVERSITY OF ADELAIDE DENTAL SCHOOL PATHWAY





ACADEMIC STAFF

DEAN AND HEAD OF THE ADELAIDE DENTAL SCHOOL



Professor Richard M. Logan

BDS MDS PhD FFOPRCPA) FICD FPFA

Richard Logan graduated from The University of Adelaide in 1993. He completed his post-graduate training in Oral Pathology in 1998 and gained his PhD in 2008. In 2007, he completed the Fellowship examination in Oral Pathology with the Royal College of Pathologists of Australasia.

His main research interest is in regard to toxicities of cancer treatment, particularly the pathobiology of alimentary tract mucositis. Richard has engaged widely with both the dental and medical professions throughout his career. He is a past President of the International Society of Oral Oncology and is a previous Chair of the Faculty of Oral and Maxillofacial Pathology of the Royal College of Pathologists of Australasia. Richard is the current Chair of the South Australian Registration and Notification Committee of the Dental Board of Australia and also chairs the Board's Expert Reference Group (Specialists) as well as Equivalence Assessment Panels for internationally qualified dental specialists.

LEADING RESEARCHERS WITHIN THE SCHOOL



Dr Peter Zilm

Peter Zilm's core study area looks at understanding the physiology and molecular changes associated with the stress response of bacteria during the transition from health to disease in the host. His skills include the utilisation of both continuous culture, animal and biofilm models to study bacterial responses to allogenic and autogenic changes using proteomic and genetic techniques. More recently Dr Zilm's research has focussed on the relationship between extra-oral diseases as a result of the migration of oral bacterial to extra-oral niches and their effect on the microbiome.

All current projects investigate the genotypic and phenotypic changes of the pathogens *Enterococcus faecalis*, *Staphylococcus aureus* and *Fusobacterium nucleatum* when growing in niches not normally associated with colonisation.

Dr Zilm is the Assistant Dean, Research for the Adelaide Dental School.



Professor Lisa Jamieson

Lisa Jamieson is an NHMRC Associate Professor at ARCPHO, University of Adelaide. She has established and leads the University of Adelaide's Indigenous Oral

Health Unit which is one of the most internationally-respected Indigenous health research units in the world.

She has also established four research interventions among Indigenous Australians and was involved in establishing the dental component of Wave-3 of the Aboriginal Birth Cohort. Lisa is recognised as a

leading researcher in Indigenous oral health. In this role she has been contributor of information to national Indigenous oral health and dental services policy in Australia. She has published widely and been an invited presenter at numerous international research meetings involving Indigenous oral health. She is on the Editorial Board of BMC Public Health and has served on several recent NHMRC working parties.



Professor Giampiero Rossi-Fede

Professor Rossi-Fede is currently the Head of Endodontics at The University of Adelaide.

He qualified as a dentist in 1996 from the University of Rome "La Sapienza" in Italy. He obtained his MCLinDent in Endodontology from UCL/Eastman Dental Institute in the United Kingdom (UK) in 2005 and his PhD from PUCRs in Porto Alegre, Brazil in 2013. He is a registered specialist in Australia, New Zealand and the United Kingdom.

He has been dedicated to clinical practice and postgraduate education at UCL/Eastman Dental Institute and Warwick Dentistry in the UK, as well as publishing more than 50 peer-reviewed papers in topics such as root canal irrigation and basic chemistry of endodontic biocides. Furthermore, Giampiero has published several systematic reviews with direct clinical translation in the field of endodontics.

He is actively involved in international research and is currently collaborating with colleagues from University of New York, UCL and University of the Pacific in the USA, University of Hong Kong, the Universities of Barcelona and UEM in Spain, Cagliari in Italy, PUCRs and UFRGs Brazil.

The development plan and broader needs of the School may be subject to change over time. The Adelaide Dental School Endowment Fund will be held in perpetuity to support those plans and needs, in accordance with the fund rules, which are available on request.

PR Begg image courtesy of Australasian Begg Society of Orthodontists.



FOR FURTHER ENQUIRIES

University of Adelaide Development
The University of Adelaide SA 5005 Australia

TELEPHONE +61 8 8313 5800

EMAIL development@adelaide.edu.au

WEB adelaide.edu.au

© The University of Adelaide. Published January 2019
CRICOS 00123M

DISCLAIMER The information in this publication is current as at the date of printing and is subject to change. You can find updated information on our website at adelaide.edu.au or contact us on 1800 061 459. The University of Adelaide assumes no responsibility for the accuracy of information provided by third parties.