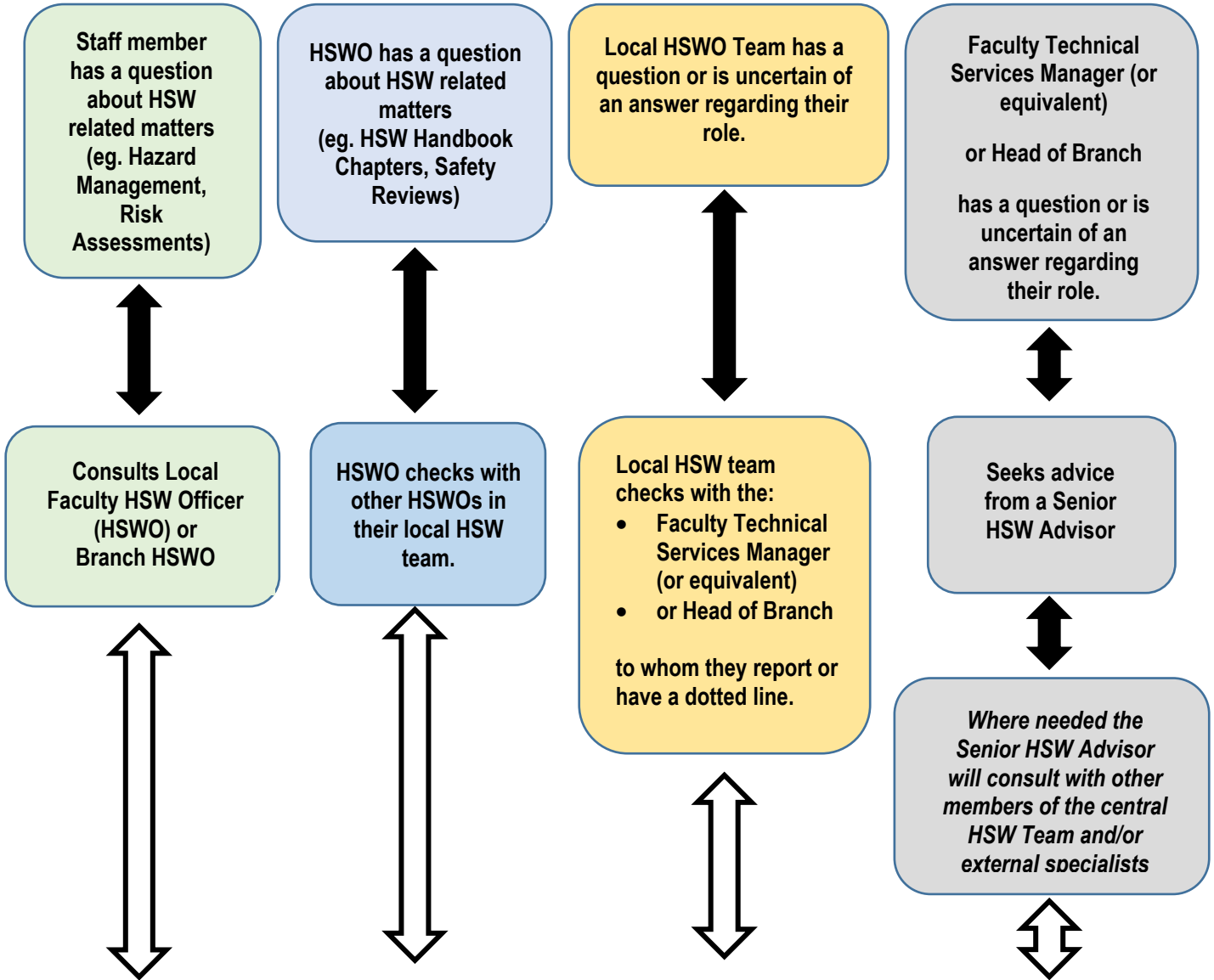


HSW ADVICE PATHWAY

Key contacts for staff when seeking advice on HSW related matters



Issue or question has been resolved, feedback provided to person seeking advice.

HSW Email Enquiry:
[Radiation](#)
[System Support](#)
[Central HSW Team](#)

NOTE: Email queries are responded to in a time frame that depends on workload and priorities – some responses will come back via Senior HSW Advisors

HSW	HSW ADVICE PATHWAY	Effective Date:	25 May 2018	Version 1.0
Authorised by	Associate Director, HSW	Review Date:	As required	Page 1 of 1
Warning	This process is uncontrolled when printed. The current version of this document is available on the HSW Website.			