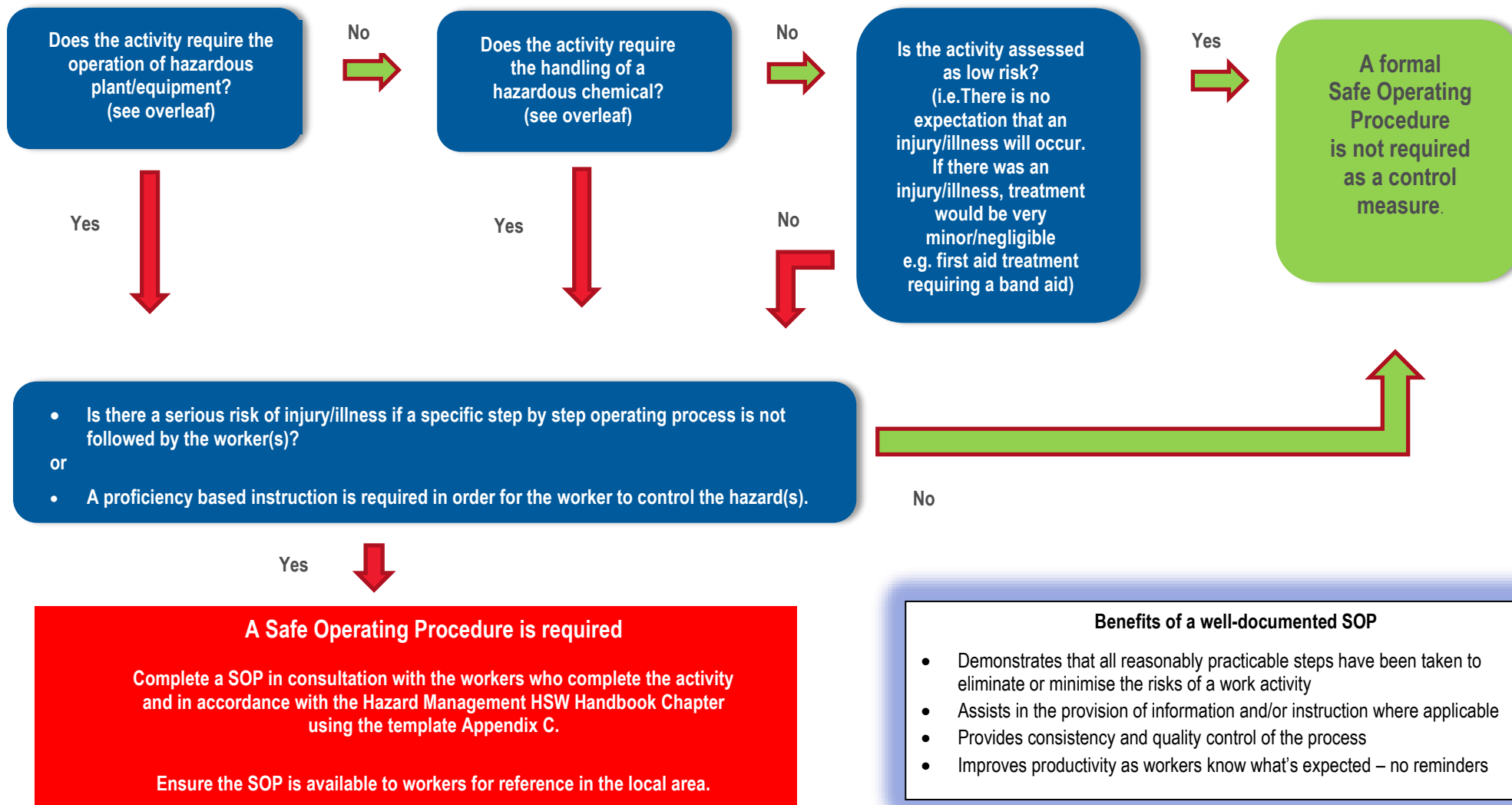


## HAZARD MANAGEMENT – SAFE OPERATING PROCEDURE (SOP) DECISION TOOL

Supervisors or person in control of the activity/area:



|               |  |                 |             |             |
|---------------|--|-----------------|-------------|-------------|
| HSW Handbook  | Hazard Management – SOP Information sheet  | Effective Date: | 18 May 2018 | Version 1.0 |
| Authorised by | Associate Director, HSW  | Review Date:    | 18 May 2021 | Page 1 of 2 |
| Warning       | This process is uncontrolled when printed. The current version of this document is available on the HSW Website. |                 |             |             |

| Hazardous chemical   | Hazardous plant/equipment  |
|--|--|
| <p>A substance, mixture or article that satisfies the criteria for a hazard class in the Globally Harmonised System of Classification and Labelling of Chemicals (GHS), including a classification referred to in Schedule 6 <a href="#">Work Health and Safety Regulations 2012 (SA)</a>, but does not include a substance, mixture or article that satisfies the criteria solely for one of the following hazard classes:</p> <ul style="list-style-type: none"> <li>(a) acute toxicity – oral – cat 5</li> <li>(b) acute toxicity – dermal – cat 5</li> <li>(c) acute toxicity – inhalation – cat 5</li> <li>(d) skin corrosion/irritation – cat 3</li> <li>(e) serious eye damage/irritation</li> <li>(f) aspiration hazard – cat 2</li> <li>(g) flammable gas – cat 2</li> <li>(h) acute hazard to the aquatic environment</li> <li>(i) chronic hazard to the aquatic environment – cat 1 – 4</li> <li>(j) hazardous to the ozone layer.</li> </ul> | <p>Any plant/equipment used for a work/task related activity that:</p> <ul style="list-style-type: none"> <li>• has the potential:                             <ul style="list-style-type: none"> <li>• to entangle, crush, cut/stab/puncture, trap, shear, tear or strike (i.e. safe-guarding is required);</li> <li>• for a pinch point to trap any part of the body or catch loose clothing, hair etc (e.g. conveyor, gears, loaders and other moving equipment);</li> <li>• for a worker to come into contact with fluids under high pressure;</li> <li>• to cause a serious burn/injury;</li> <li>• to expose the worker to live electrical conductors;</li> <li>• to expose the worker to gases/vapours/liquids/dusts/other substances triggered by the operation;</li> <li>• to explode or implode;</li> <li>• to exceed safe noise levels;</li> <li>• for the worker to adopt poor posture (see definition for a Hazardous manual activity);</li> <li>• to overturn, collide with another person or thing (e.g. moving powered plant);</li> </ul> </li> <li>• lifts or suspends a load;</li> <li>• is an industrial robot or other remotely or automatically energised plant at the workplace;</li> <li>• involves non-ionising radiation or high level magnetic fields;</li> <li>• requires registration in accordance with Schedule 5 of the <a href="#">Work Health and Safety Regulations 2012 (SA)</a>.</li> </ul> <p>Refer to the <a href="#">HSW Handbook chapter Plant/Equipment Safety Management</a> for additional information.</p> |

|               |  |                 |             |             |
|---------------|--|-----------------|-------------|-------------|
| HSW Handbook  | Hazard Management – SOP Information sheet  | Effective Date: | 18 May 2018 | Version 1.0 |
| Authorised by | Associate Director, HSW  | Review Date:    | 18 May 2021 | Page 2 of 2 |
| Warning       | This process is uncontrolled when printed. The current version of this document is available on the HSW Website. |                 |             |             |