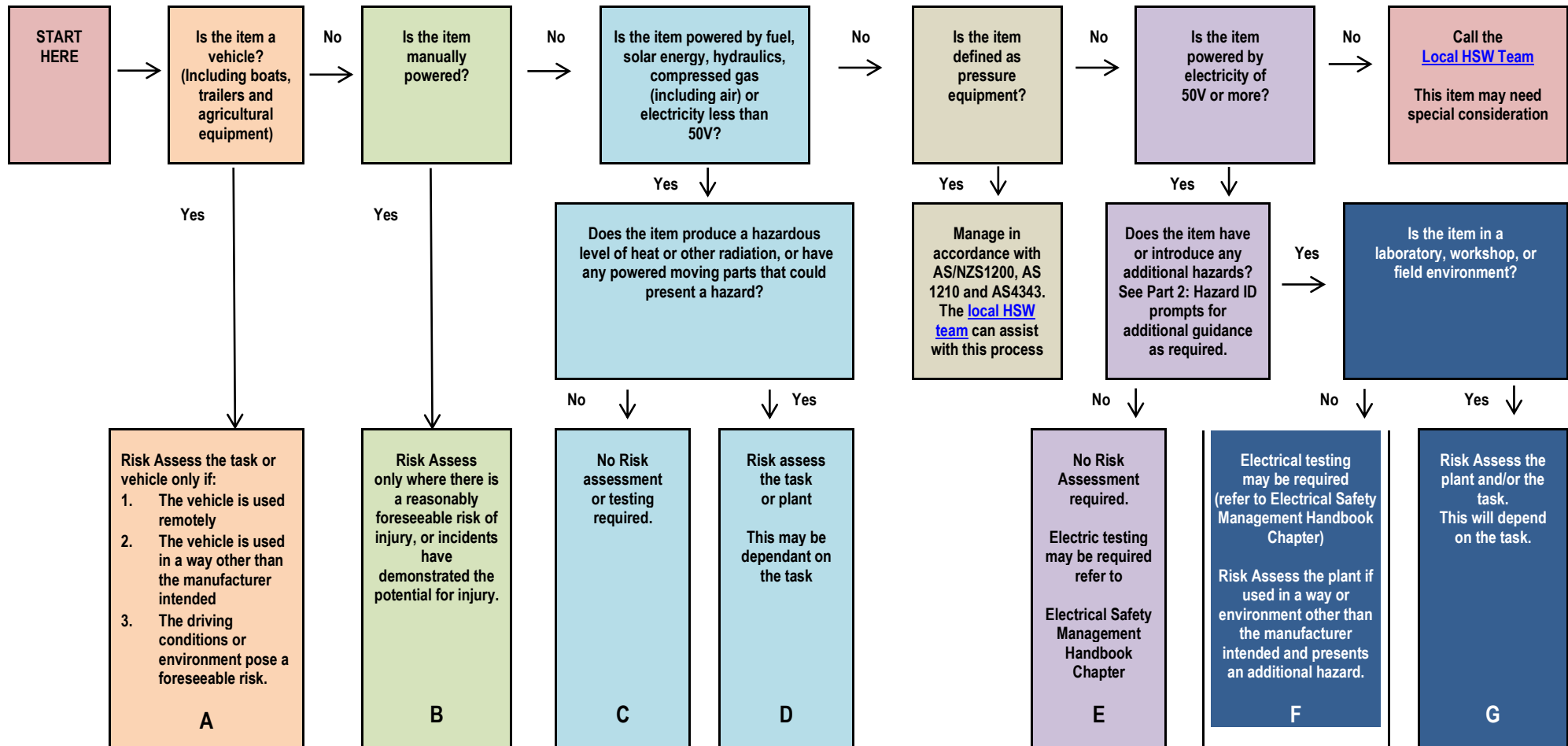


PLANT/EQUIPMENT “RISK ASSESSMENT” DECISION TOOL PART 1



HSW Handbook	Plant/Equipment Safety Management	Effective Date:	April 2021	Version 4.0
Authorised by	Chief Operating Officer (University Operations)	Review Date:	1 April 2024	Page 1 of 2
Warning	This process is uncontrolled when printed. The current version of this document is available on the HSW Website.			

PLANT/EQUIPMENT “RISK ASSESSMENT” DECISION TOOL

Part 2: Hazard Identification prompts (to assist with your risk assessment, where required by part 1)

Can the plant/equipment cause:

- entanglement of hair, clothing, gloves, jewellery, brushes, rags or other materials in moving parts?
- crush or impact injuries from parts due to unexpected failure and/or ejection of plant/equipment or material?
- injury by uncontrolled or unexpected movement?
- injury by cutting, puncturing, shearing, trapping, abrading or tearing?
- injury by electrocution, burn (by heat, steam, flame), explosion, leak of a high pressure substance (hydraulic fluid and air) toxic substances or radiation?
- high falls, suffocation, noise, vibration and contact with overhead or underground power lines?
- the exposure to dust from silica and silica containing products (e.g. during sawing, grinding, cutting, crushing - rock, concrete, brick, block and mortar sand)?

Are:

- Workers unable to access the plant/equipment without risk of slip, trip or fall?
- Paths of access and egress less than 600mm?
- Hazards foreseeable if the controls and/or power are able to be switched on or off accidentally when in use (e.g. where the switch is not shrouded)?
- Guards inadequate for the type of plant/equipment and the work being undertaken?

Work environment hazards

- Does the plant/equipment create hazardous conditions due to harmful emissions (e.g. fluids, gas under pressure, vapour, fumes, noise etc)?
- Is any discharge of hazardous chemicals contained?
- Does the area which the plant/equipment is being placed have any weight restrictions (refer to [Infrastructure Branch](#))?

Hazards with plant/equipment used for lifting people or materials

(Note all lifting equipment must have current certification for the weight being lifted and you must not lift loads above that certified/rated capacity).

- Is plant/equipment used for lifting people or hazardous materials?
- Are loads inadequately protected if they are required to be suspended over people or property?
- Has all required maintenance and servicing been conducted?

With plant/equipment in operating position:

- Are there any other foreseeable hazards that may occur during the operation of the plant/equipment (e.g. electricity/water, surface, hazardous chemicals, security and/or dust)?

Part 3: Plant/equipment Categories

- A. Vehicles. (e.g. boat, trailer, agricultural equipment, all-terrain vehicles/ATV)
- B. Manually-powered. (e.g. simple hand tools, bench vice, hand winch)
- C. Battery, hydraulic, solar, compressed gas/air or fuel-powered **portable** or **movable** items with no additional hazards. (e.g. portable radio, cordless screwdriver)
- D. Battery, hydraulic, solar, compressed gas/air or fuel-powered **portable** or **movable** items with additional hazards. (e.g. some cordless power tools, gas burner/soldering iron, air tools)
- E. Mains-power electrical items with no additional hazards, used as the manufacturer intended. (e.g. computer, photocopier, printer, refrigerator - including refrigerators purpose-designed for flammables)
- F. Mains-powered office-based electrical items with additional hazards. (e.g. heater, kettle, microwave oven)
- G. Mains-powered **fixed**, **portable** or **movable** lab, workshop and field equipment that may present additional hazards. (e.g. circular saw, heater-stirrer, lathe)

HSW Handbook	Plant/Equipment Safety Management	Effective Date:	April 2021	Version 4.0
Authorised by	Chief Operating Officer (University Operations)	Review Date:	1 April 2024	Page 2 of 2
Warning	This process is uncontrolled when printed. The current version of this document is available on the HSW Website.			