

---

# University of Adelaide North Terrace Campus Public Realm Concept Design

---

Prepared for The University of Adelaide

**Date:** 21 March 2019

**Doc no.:** A18033-LA-SK004

**Rev.:** P8

ASPECT Studios™

| infraPlan

| mantirridesign

01

INTRODUCTION

03

Introduction and Context

03

Key Opportunities

04

Design Principles

05

02

CONCEPT DESIGN

06

Key Design Moves

06

Overall Concept Plan

11

Victoria Drive Edge Central

12

Victoria Drive Edge West

15

Victoria Drive Edge East / Mawson Corner

17

Kintore Gateway & Observatory Precinct

19

Barr Smith Lawns

21

University Central Plaza

22

Laneway & Engineering Gardens

25

Helen Mayo Precinct & Botanic Gardens Interface

26

Western Drive

28

Walter Young Garden

30

Colombo Plan Alumni Court

32

Nexus 10 Precinct

33

Plan Overlays

35

Potential Staging

48

03

URBAN ELEMENTS & DESIGN  
PALETTE

49

Lighting

49

Furniture & Structures

50

Public Art

51

Paving

52

Planting

53

04

APPENDICES

54

Appendix A: Movement Report

54

REVISION STATUS

REV	DESCRIPTION	BY	CHECKED	DATE
P1	WORKING DRAFT	DM/SL	TC	24.07.2018
P2	DRAFT PRESENTATION	DM/SL	TC	26.07.2018
P3	REVISED PRESENTATION	DM/SL	TC	03.08.2018
P4	DRAFT REPORT	DM/SL	TC	14.08.2018
P5	REVISED REPORT	DM	TC	28.09.2018
P6	REVISED PRESENTATION	DM	TC	18.10.2018
P7	REVISED REPORT	DM	TC	26.02.2019
P8	PLAN OVERLAY ADDED	DM	TC	21.03.2019



## INTRODUCTION AND CONTEXT

The University of Adelaide has commissioned this report to articulate the design vision and proposals associated with concept plans for the public realm associated with the University's North Terrace Campus.

The scope of the study area includes the main campus bound by North Terrace to the south, Frome Road to the east, Victoria Drive to the north and Kintore Avenue to the west. It also includes concepts for the university's Nexus 10 site located on the south eastern corner of North Terrace and Pulteney Street and the School of Medicine precinct to the east of Frome Road. While the core focus of the project looks at the public realm on the campus, the surrounding context, particularly connections to the River Torrens, Riverbank Precinct, Lot Fourteen, new Botanic High School and the city have been taken into consideration.

The campus has been the subject of numerous design strategies and master plans over the past 10 years and this report seeks to elevate the core principles for the public realm that have been reinforced through these plans and which support the University's vision to create a campus that better connects to the city and surrounds. With numerous changes underway in the east end of the city, particularly with the redevelopment of the Lot Fourteen, there will be an increasing importance on creating a vibrant campus that welcomes people in the city and which adds to the vitality and culture of the east end.

The concept plan presents strategies that focus primarily on lifting the pedestrian experience of the campus, maximising space for pedestrian and bike movement, with improved greening, wayfinding and the identification of key sites within and adjacent to the campus that promote opportunities for increased activation of the campus' external spaces and which supports the reorientation of the campus to better connect with the city and surrounds.

The process for the development of the Concept Plan included:

- Initial visioning workshop with the campus project reference group
- Review and synthesis of existing reports, in particular the FJMT Master Plan, 2016
- Site walkovers and investigations
- Workshops with key campus groups, Adelaide City Council and Renewal SA to further develop preliminary ideas and opportunities
- Preparation of a draft summary report (this report)

Campus public realm vision:

***The North Terrace Campus will be an extension of the City of Adelaide, a place where students, staff and the wider public are attracted to, allowing for social connection, for events and smaller gatherings, as a place of respite and inspiration as well as active use both day and night***

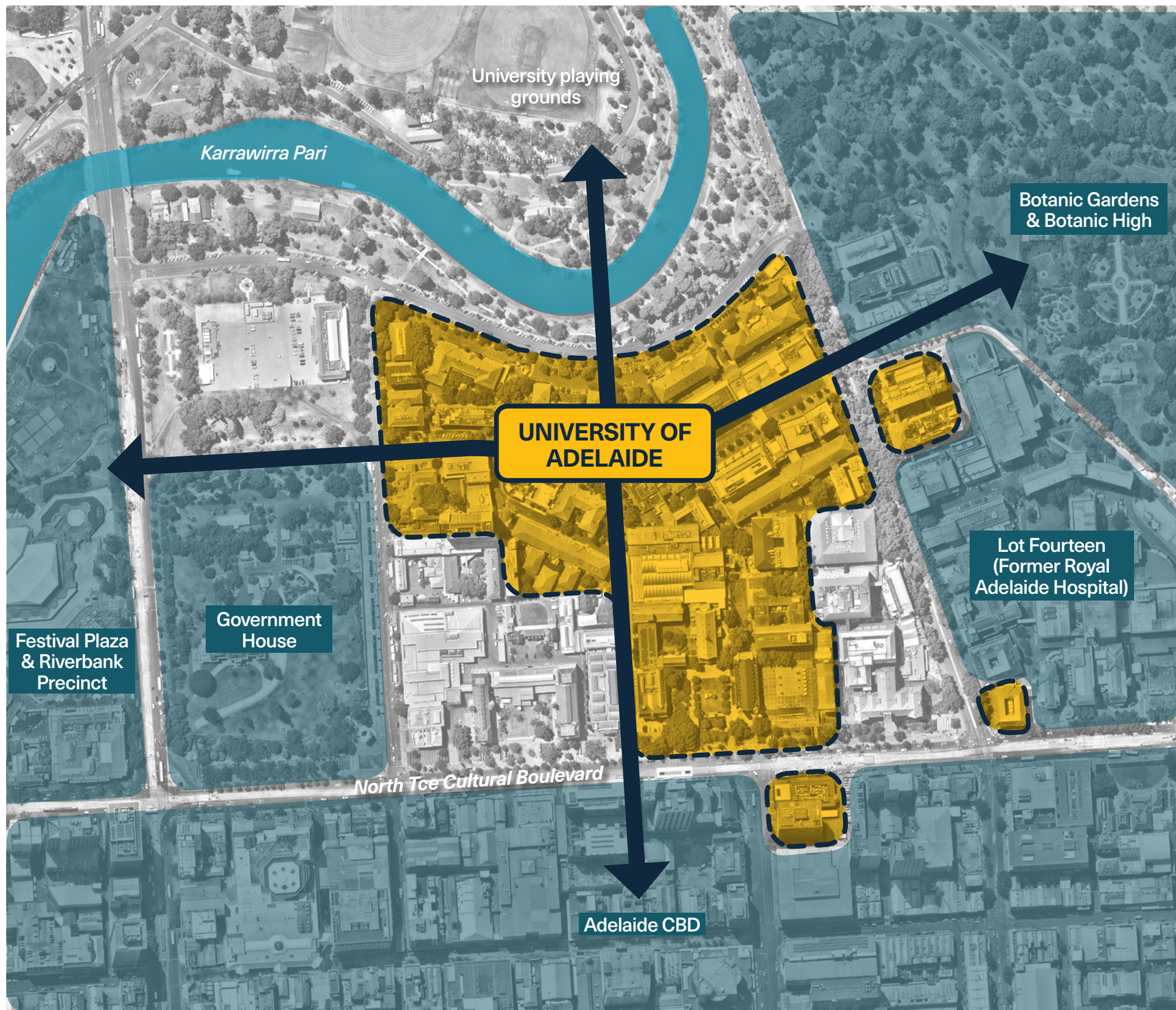


Fig. 1: Site Context Plan

### DISCLAIMER

- There are aspirational elements to this concept design that may not be achievable or which require consultation and alignment with parties external to University of Adelaide



## 01 INTRODUCTION

### KEY OPPORTUNITIES

During the week beginning 18th of June the design team for the North Terrace Public Realm project attended a site walk over and a series of workshops with the client and key university departments. As an outcome of the initial workshops, we have identified the following as key design opportunities for the Campus:

#### 01 Victoria Drive Activation

Potential for frontage activation with:

- Consolidated landscape
- Improved connections to / from riverbank
- Car parking removal
- Building entries relocation
- Multi purpose landscape spaces
- Potential development on Victoria Dr. corner
- Removal (part) of fences
- Recreation and sports opportunities

#### 02 Frome Road Activation

Potential for frontage activation with:

- Removal (part) of fences
- Potential development on Victoria Dr. corner
- Improved connections with Botanic Gardens and Lot Fourteen.

#### 03 Western Gateway

Reinforce area adjacent to Hartley Building on Kintore Avenue as the western gateway into the Campus coming from Festival Centre precinct.

#### 04 Hub Central Forecourt

Potential for a Hub Central forecourt where main Campus connections intersect. Improve accessibility and, at the same, reinforce escarpment as a landscape feature of the site.

#### 05 Outdoor Campus Hub / University Square

Potential for new outdoor hub for the Campus with improved pedestrian circulation and minimised vehicle access. Opportunity to rationalise level change to create usable spaces.

#### 06 Colombo Plan Alumni Court Activation

Potential for court activation with:

- Public Art
- Sports courts

#### 07 Engineering Gardens

Opportunity for new landscape area between Engineering North and Engineering South Buildings with:

- Car parking removal
- Improved connection from UniSA Campus edge and Maths Lawn
- Potential for an intimate and shaded garden
- Integration with potential redevelopment of the Engineering Annexe site

#### 08 Western Drive

Reinforce Western Drive as the main pedestrian link through the Campus with:

- Removal of car parking
- Rationalised service and emergency access
- Use of high - quality landscape finishes
- Single surface paving treatment
- Potential water-sensitive urban design

#### 09 Barr Smith Link

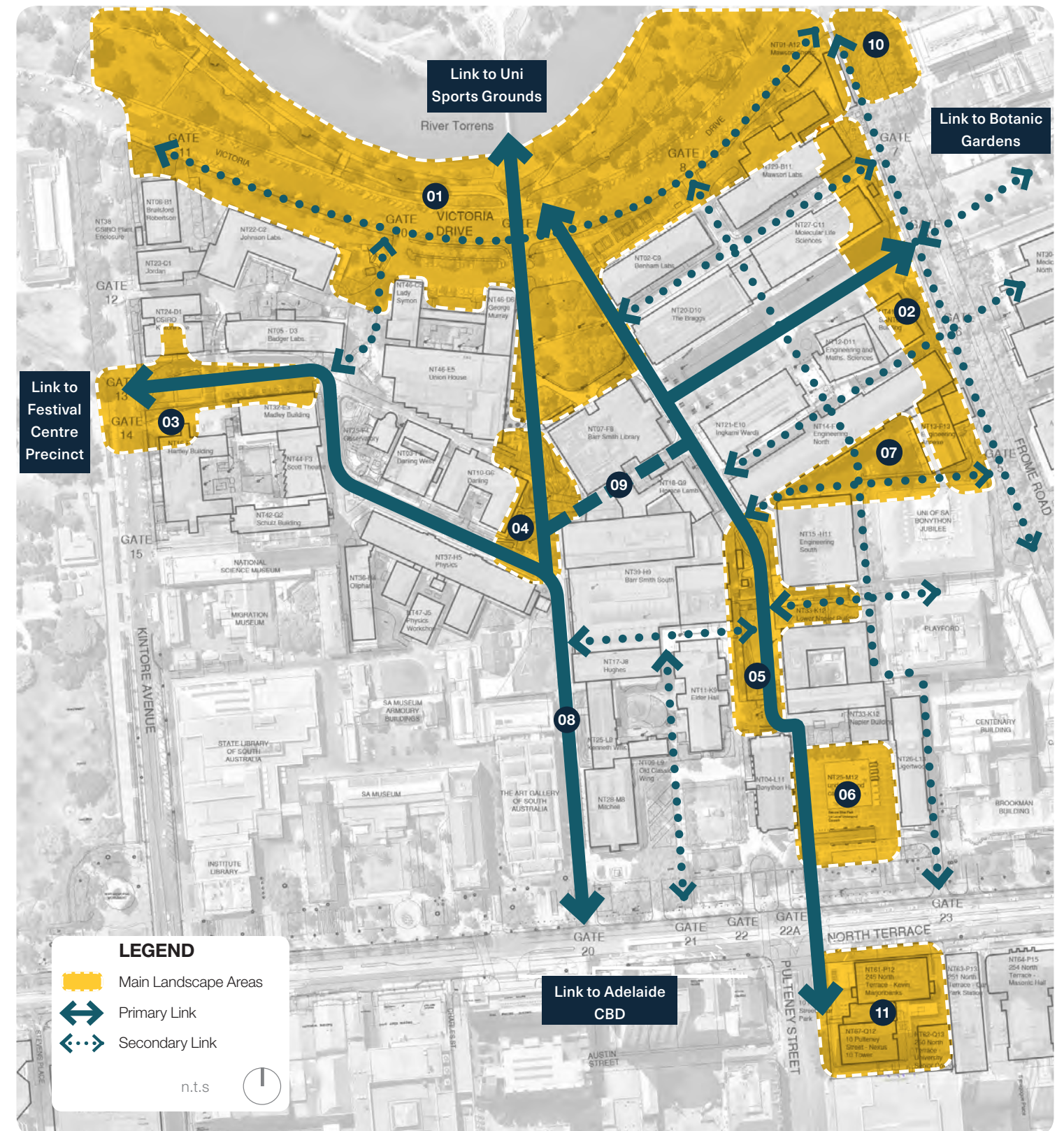
Reinforce East-West link through the Campus connecting new western gateway, through new proposed development south of Barr Smith Library and Frome St edge.

#### 10 Botanic High Crossing

Potential to create scramble crossing to new Botanic High School and Botanic Gardens.

#### 11 Nexus 10 Forecourt Activation

Reimagine court as city lounge or meeting place for University users with bar, cafe. Gateway to / from the CBD





## DESIGN PRINCIPLES

The following overarching design principles have been refined from previous planning and design studies and adapted to reinforce the Campus vision for the public realm.



### IDENTITY

City university on the river, in the Park Lands



### CONNECTION

North-South, East-West connection, improved legibility, inter-connectivity, safety and activation



### PUBLIC ROUTES

Define a style palette that unites the University's public routes



### TOPOGRAPHY

Celebrate the lie of the land, terraces, stairs, slopes, amphitheatres and belvederes



### PUBLIC SPACES

Define a family of well connected, diverse and complementary public spaces in each precinct



### UNIVERSITY SQUARE

Provide an integrated outdoor central university square to complement Hub Central



### PEOPLE FRIENDLY

Provide a comfortable and accessible campus for people of all ages and abilities

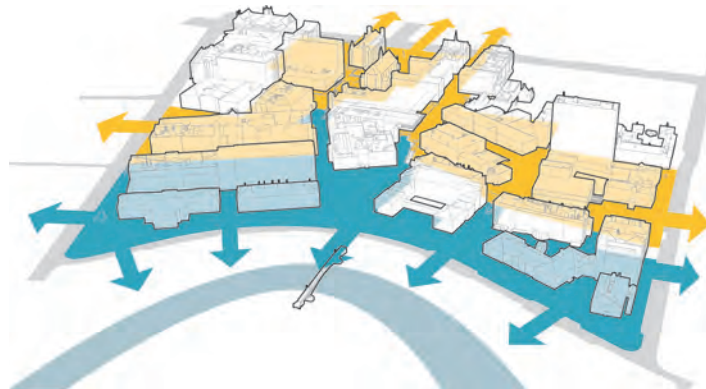


### INTERFACES

Animate and activate public interfaces to enhance public routes and spaces

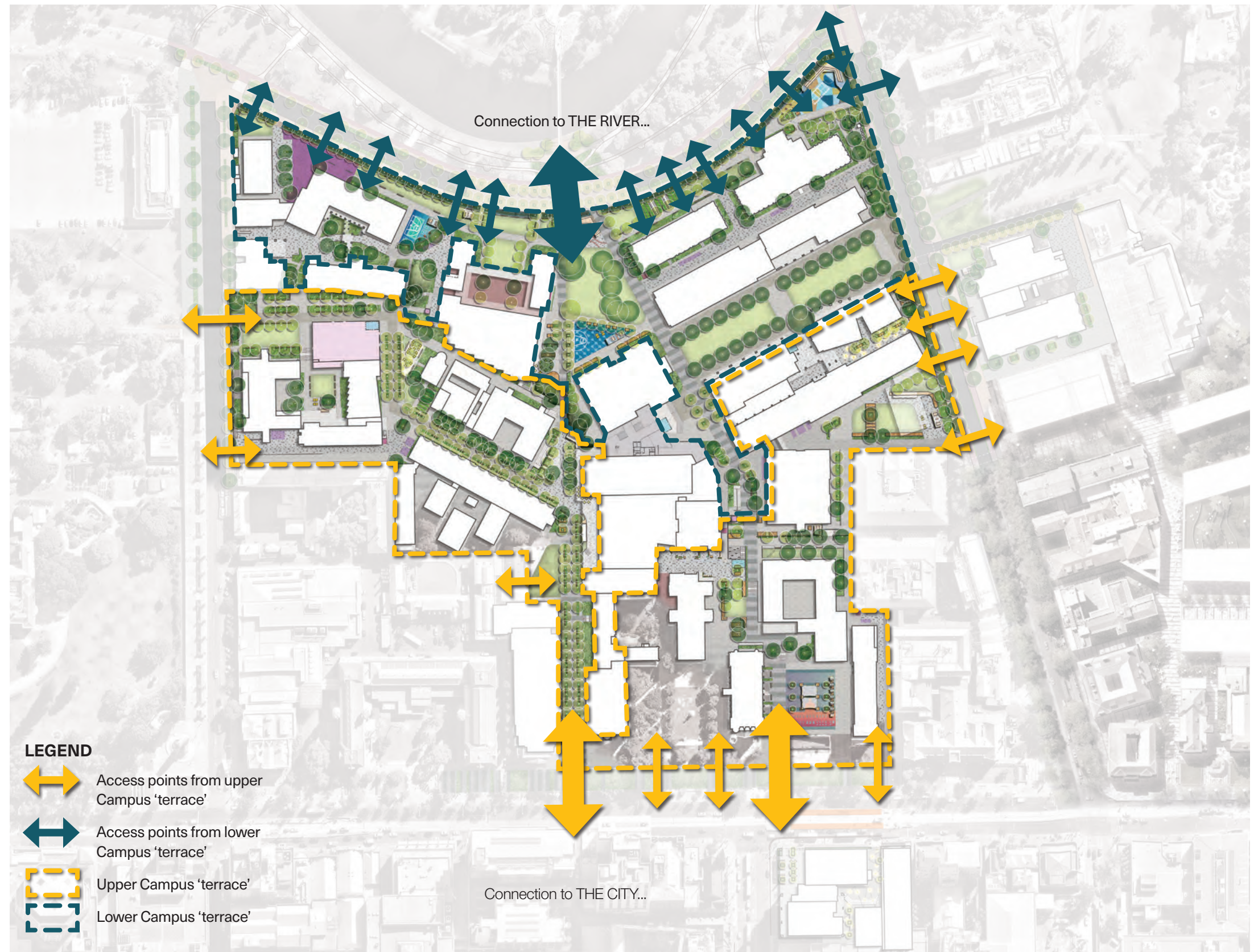


## KEY DESIGN MOVES



# CONNECT

- Connect the Campus to the City and River
- Reinforce the 'upper' terrace link to the City and the 'lower' terrace link to the river
- Improve connects to the Festival Centre Precinct, Lot Fourteen, North Terrace cultural centre, Botanic High School, Botanic Gardens and surrounding public transport



### LEGEND

- Access points from upper Campus 'terrace'
- Access points from lower Campus 'terrace'
- Upper Campus 'terrace'
- Lower Campus 'terrace'

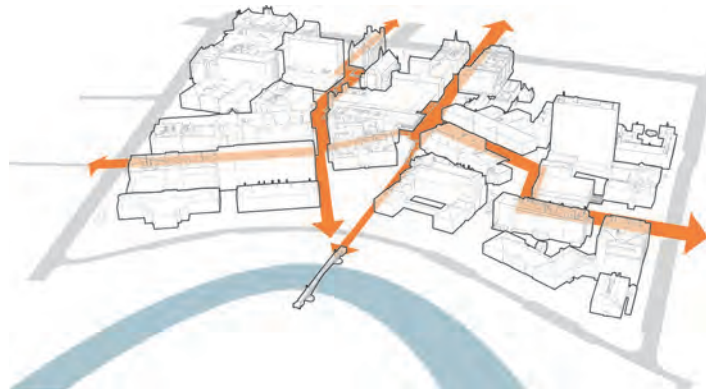
SCALE: 1:1500@A3

0 15 30 45m



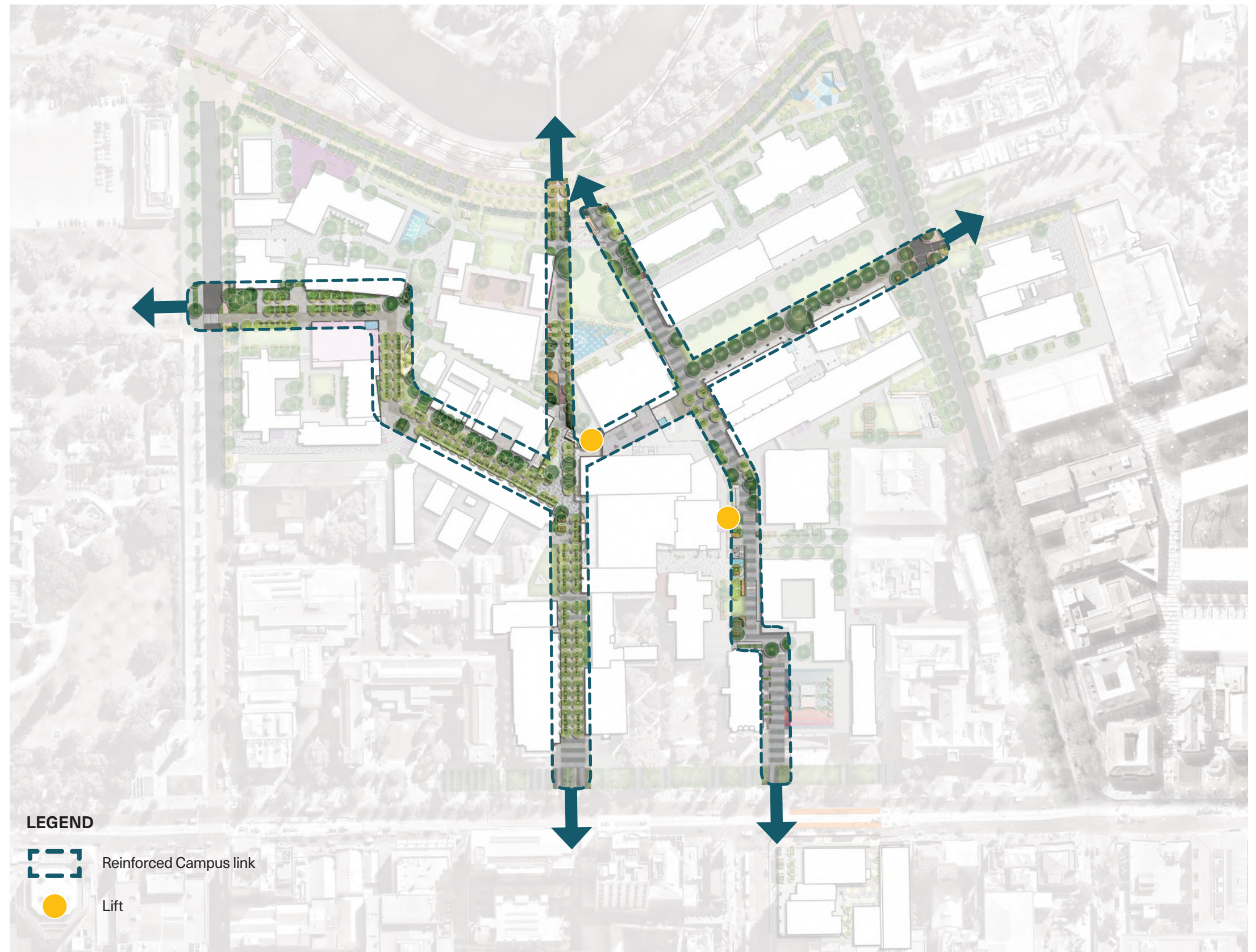


## KEY DESIGN MOVES



# STRENGTHEN

- Reinforce the North-South City links through the Campus
- Strengthen the legibility of the important East-West links through the Campus
- Strengthen pedestrian links and invite public to walk through the Campus



### LEGEND

- Reinforced Campus link
- Lift

SCALE: 1:1500@A3

0 15 30 45m



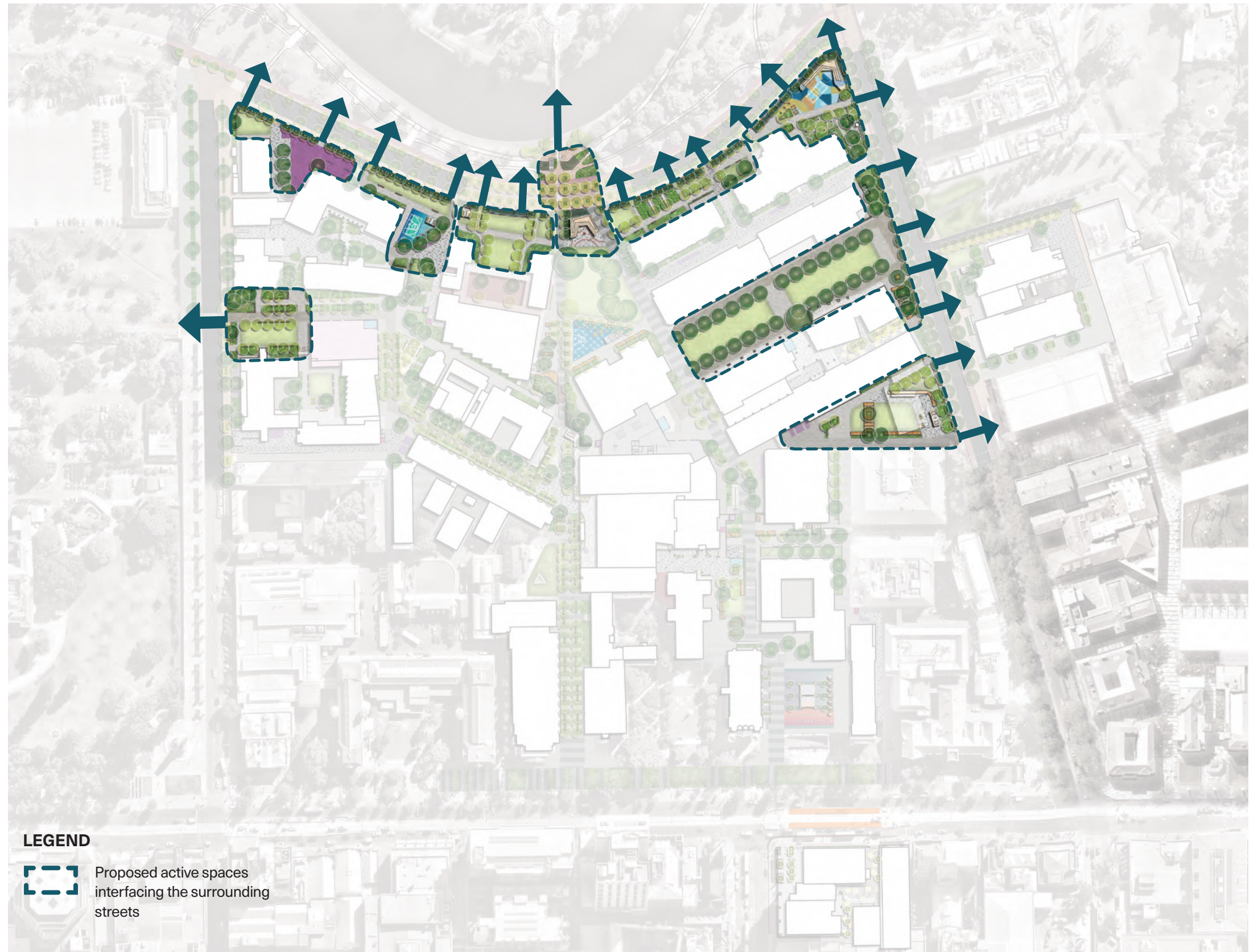


KEY DESIGN MOVES




# INTEGRATE

- Activate the edges of the Campus, particularly at the lower terrace level
- Develop stronger physical and visual connections to important adjacent sites including Botanic High School, Lot Fourteen, River Torrens and Festival Precinct
- Engage with neighbours and surrounds
- Invite activation into Campus grounds



LEGEND

-  Proposed active spaces interfacing the surrounding streets

SCALE: 1:1500@A3

0 15 30 45m



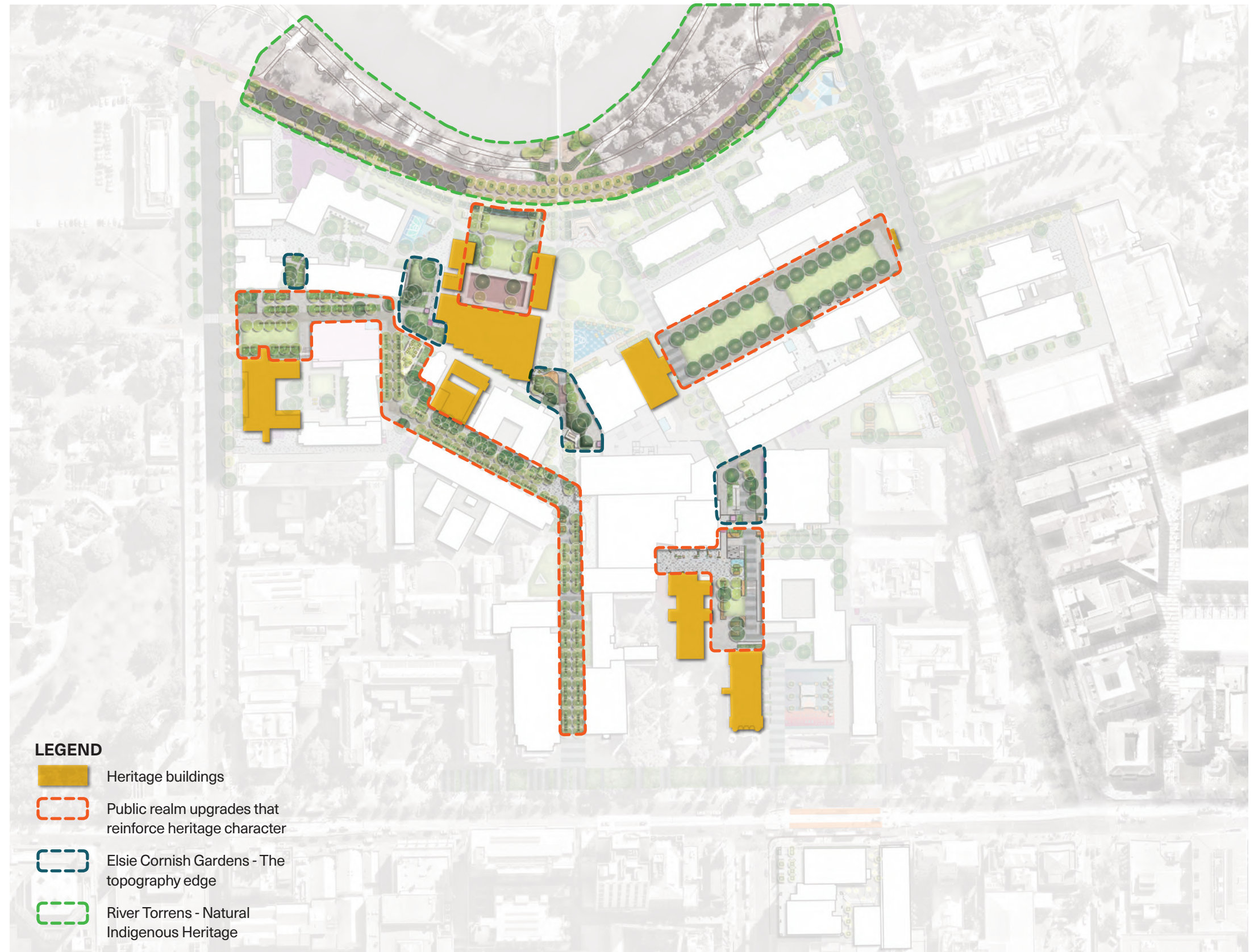


KEY DESIGN MOVES

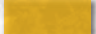





# RESPECT

- Reinforce the distinct topography and cultural heritage of the Campus



LEGEND

-  Heritage buildings
-  Public realm upgrades that reinforce heritage character
-  Elsie Cornish Gardens - The topography edge
-  River Torrens - Natural Indigenous Heritage

SCALE: 1:1500@A3

0 15 30 45M



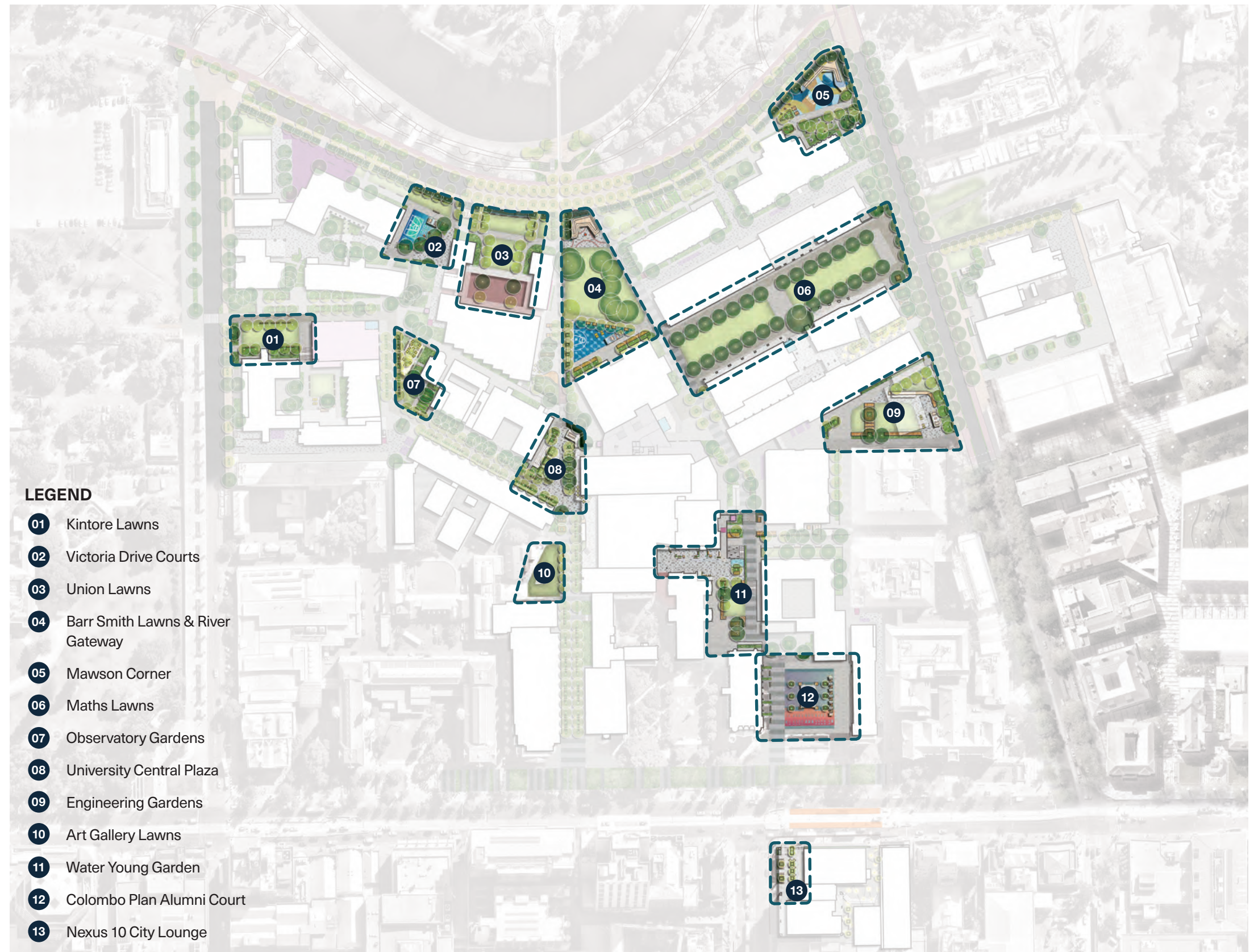


## KEY DESIGN MOVES



# ACTIVATE

- Create distinct external hubs within the Campus that allow for day and night activation with spaces for BBQs, bookable events, sports, recreation and staff social spaces



### LEGEND

- 01 Kintore Lawns
- 02 Victoria Drive Courts
- 03 Union Lawns
- 04 Barr Smith Lawns & River Gateway
- 05 Mawson Corner
- 06 Maths Lawns
- 07 Observatory Gardens
- 08 University Central Plaza
- 09 Engineering Gardens
- 10 Art Gallery Lawns
- 11 Water Young Garden
- 12 Colombo Plan Alumni Court
- 13 Nexus 10 City Lounge

SCALE: 1:1500@A3





## 02 CONCEPT DESIGN

### OVERALL CONCEPT PLAN

This concept plan is a representation of the future vision for the North Terrace Campus public realm. With a focus on the wholesale pedestrianisation of the Campus, and improved connections to the City, it is to be read as a long term strategy that will require co-operation with numerous stakeholders both within and external to the University.

### NOTES

\* Further consultation with external stakeholders including City of Adelaide, Renewal SA, SA Health and Art Gallery is required to realise these concepts.

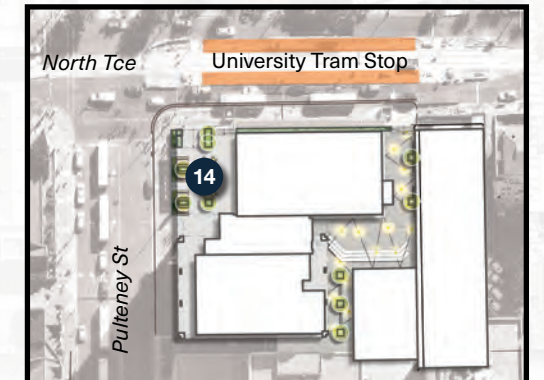
### LEGEND

- 01 Barr Smith Lawns
- 02 Cloisters
- 03 Mawson Corner \*
- 04 Maths Lawns
- 05 Pfitzner Court
- 06 Hub Central
- 07 Walter Young Garden
- 08 Colombo Plan Alumni Court
- 09 Kintore Lawns
- 10 Western Drive \*
- 11 Engineering Gardens (long term site plan)
- 12 Victoria Drive Shared Zone \*
- 13 University Central Plaza
- 14 Nexus 10 Outdoor Lounge

SCALE: 1:2000@A3



### NEXUS 10 SITE





VICTORIA DRIVE EDGE CENTRAL



LOCATION PLAN  
N.T.S



LEGEND

- 01 Riverbank terraced lawns \*
- 02 BBQ / Shelter
- 03 Raingardens
- 04 Service Hub
- 05 Lawn area
- 06 Aboriginal learning circle
- 07 Podium seating / Stage / Canopy
- 08 Biology Research Gardens
- 09 Victoria Drive Shared Space \*
- 10 Accessible car parking
- 11 Multimedia Screen / outdoor cinema

NOTES

\* Further consultation with external stakeholders including City of Adelaide, Renewal SA, SA Health and Art Gallery is required to realise these concepts.



SCALE: 1:500@A3



VICTORIA DRIVE EDGE CENTRAL: ARTIST IMPRESSION



LOCATION PLAN  
N.T.S





VICTORIA DRIVE EDGE CENTRAL: ARTIST IMPRESSION



LOCATION PLAN  
N.T.S

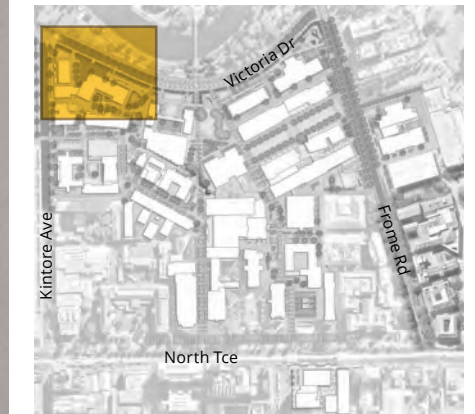




VICTORIA DRIVE EDGE WEST



LOCATION PLAN  
N.T.S



LEGEND

- 01 Relocated childcare
- 02 Childcare drop-off zone \*
- 03 Coach / Bus drop-off zone \*
- 04 Lawn area
- 05 Proposed building entry
- 06 Emergency / Service lane
- 07 Multi-use hard court
- 08 Shelter / picnic table
- 09 Fitness equipment
- 10 Accessible car parking
- 11 Raingarden
- 12 Delivery zone
- 13 Potential raised crossing \*

NOTES

- Soundproofing of building glazing required to accomodate adjacent hard courts.
- \* Further consultation with external stakeholders including City of Adelaide, Renewal SA, SA Health and Art Gallery is required to realise these concepts.



SCALE: 1:500@A3



VICTORIA DRIVE EDGE WEST: ARTIST IMPRESSION



LOCATION PLAN  
N.T.S

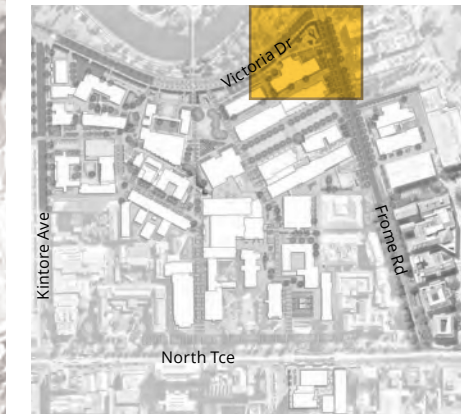




VICTORIA DRIVE EDGE EAST / MAWSON CORNER



LOCATION PLAN  
N.T.S



LEGEND

- 01 Lawn area
- 02 Raingardens
- 03 Fitness equipment
- 04 Picnic tables
- 05 Podium seating / Canopy
- 06 Multi-use courts
- 07 Geology Gardens
- 08 Potential raised scramble crossing \*
- 09 Accessible car parking
- 10 Retained ramp
- 11 Delivery zone

NOTES

\* Further consultation with external stakeholders including City of Adelaide, Renewal SA, SA Health and Art Gallery is required to realise these concepts.



SCALE: 1:500@A3



VICTORIA DRIVE EDGE EAST / MAWSON CORNER: ARTIST IMPRESSION

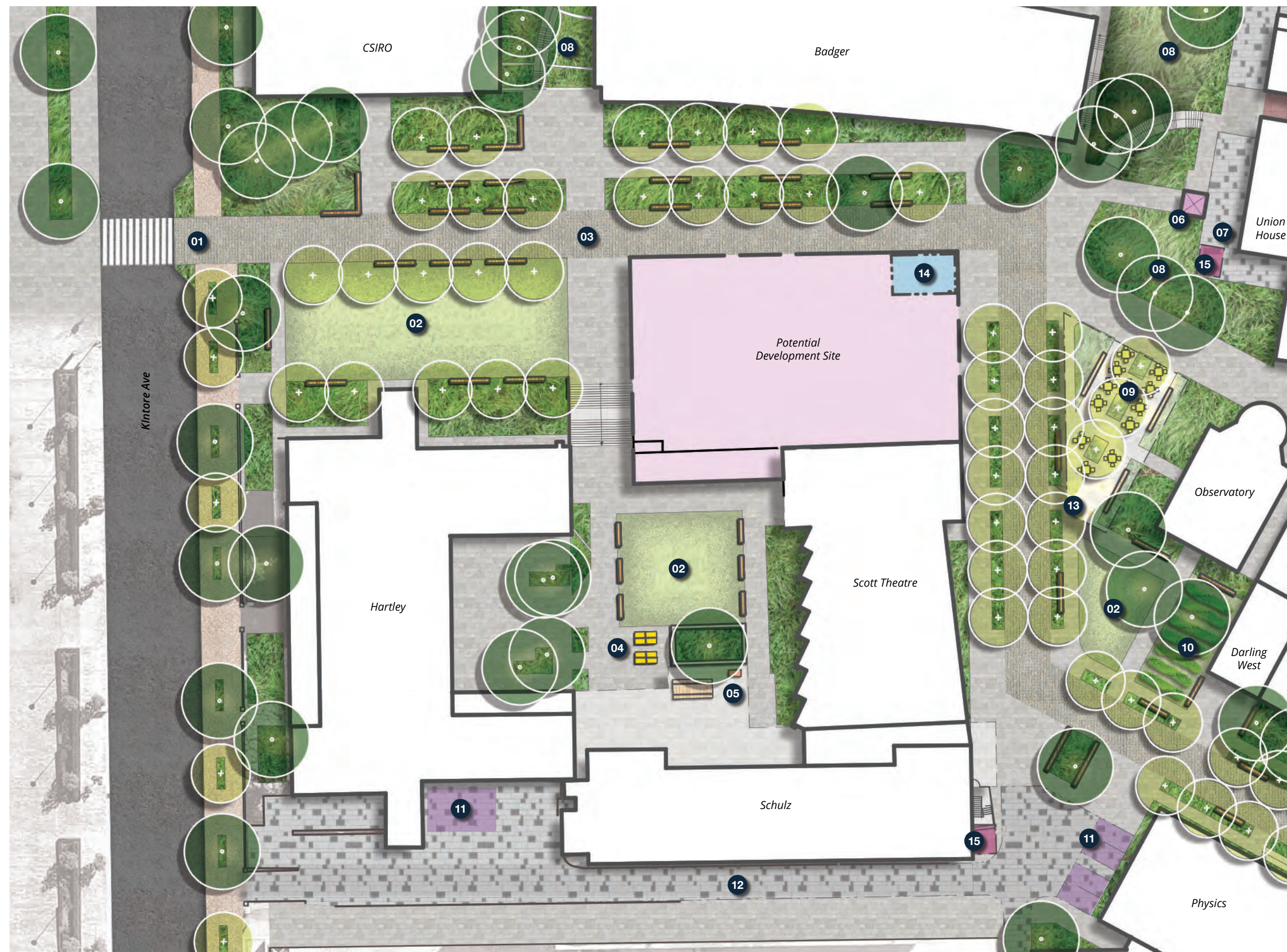


LOCATION PLAN  
N.T.S





## KINTORE GATEWAY & OBSERVATORY PRECINCT



### LOCATION PLAN N.T.S



### LEGEND

- 01 Improved Kintore Ave crossing \*
- 02 Lawn area
- 03 Stone setts 'heritage trail'
- 04 Table tennis tables
- 05 BBQ / shelter
- 06 Proposed Lift
- 07 Loading zone / Delivery point
- 08 Reinstated Elsie Cornish Gardens
- 09 Outdoor area for potential Observatory renovation as a restaurant
- 10 Edible gardens
- 11 Accessible car parking
- 12 Service lane
- 13 Potential location for large outdoor covered area
- 14 Bike Hub
- 15 Service Hub

### NOTES

\* Further consultation with external stakeholders including City of Adelaide, Renewal SA, SA Health and Art Gallery is required to realise these concepts.



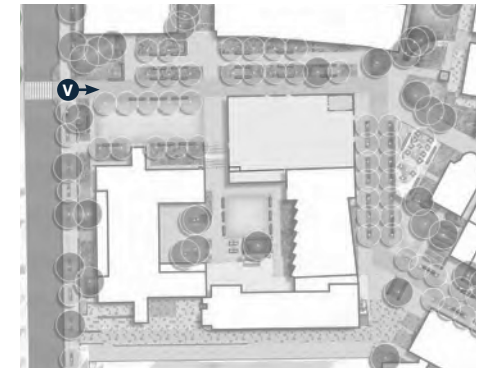
SCALE: 1:500@A3



KINTORE GATEWAY & OBSERVATORY PRECINCT: ARTIST IMPRESSION



LOCATION PLAN  
N.T.S





BARR SMITH LAWNS



LOCATION PLAN  
N.T.S



LEGEND

- 01 Cloisters
- 02 Multimedia screen / outdoor cinema
- 03 Barr Smith Lawns
- 04 High quality paving extending North Tce boulevard treatment
- 05 Informal multi-use court
- 06 Table tennis table / Badminton
- 07 BBQ / Shelter
- 08 Daybed
- 09 Seating steps
- 10 Communal table
- 11 Terraced gardens & seating deck
- 12 Existing heritage stairs
- 13 Reinstated Elsie Cornish gardens
- 14 Relocated Union House stairs
- 14 Bike Hub (Level 1)
- 15 Service Hub

NOTES

- Soundproofing of library glazing required to accomodate adjacent hard courts



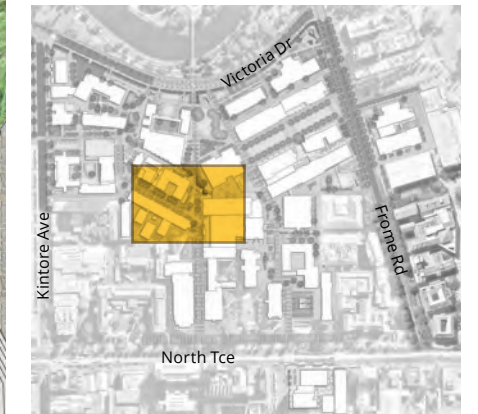
SCALE: 1:500@A3



## UNIVERSITY CENTRAL PLAZA



### LOCATION PLAN N.T.S



### LEGEND

- 01 Cobblestone setts 'heritage trail'
- 02 University Central Plaza
- 03 Communal table & shelter
- 04 Proposed lift
- 05 Rearranged stairs / ramp
- 06 Reinstated Elsie Cornish Gardens
- 07 Existing heritage stairs
- 08 Extended plaza with shade awning
- 09 Proposed mural artwork
- 10 Redesigned seating deck to allow free movement
- 11 Seating deck
- 12 High quality paving extending North Tce boulevard treatment
- 13 Art Gallery Lawns
- 14 Raised terrace with seating & gardens
- 15 Potential location for large outdoor covered area
- 16 Bike Hub (Level 1)



SCALE: 1:500@A3



UNIVERSITY CENTRAL PLAZA: ARTIST IMPRESSION

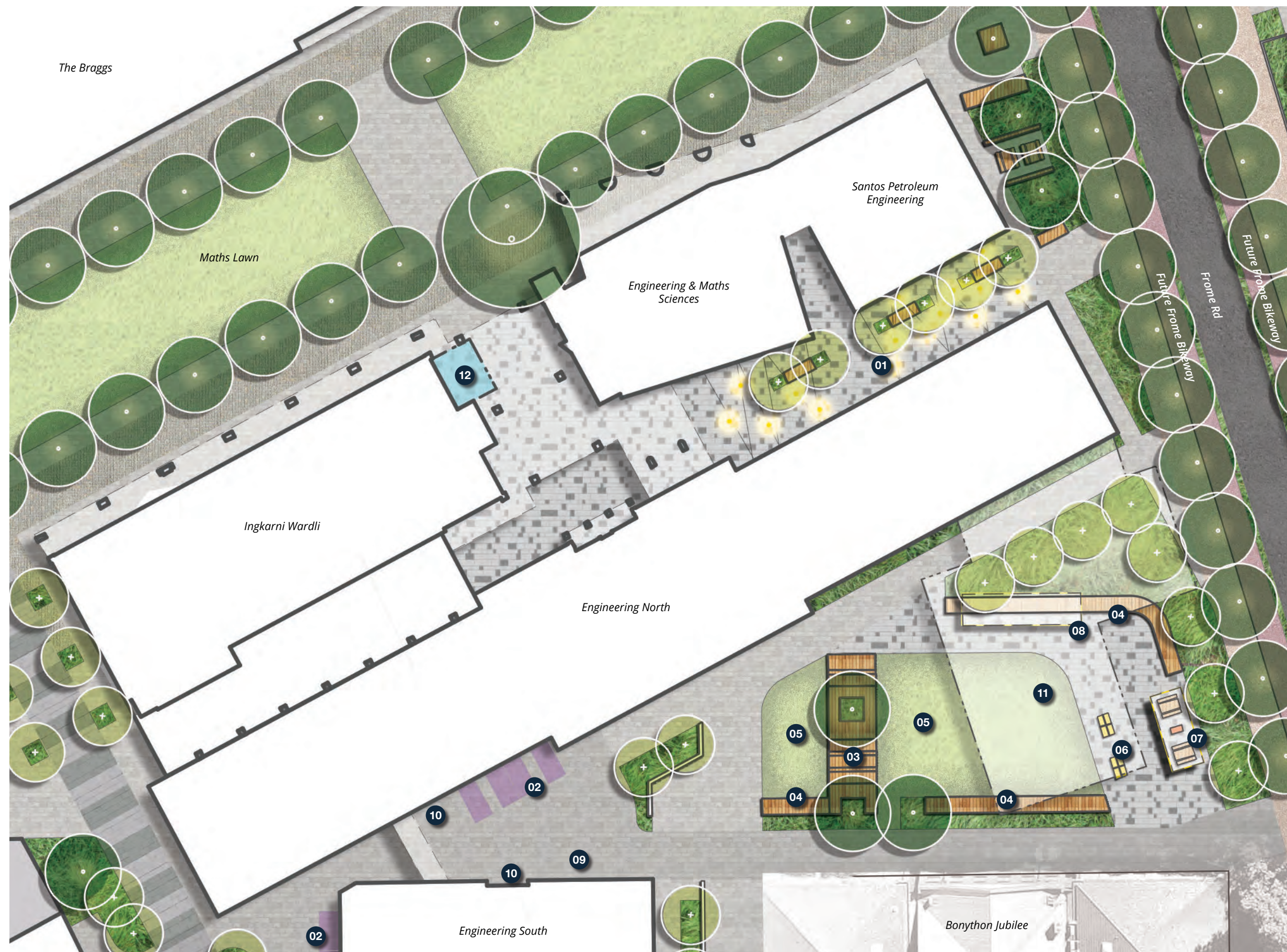


LOCATION PLAN  
N.T.S

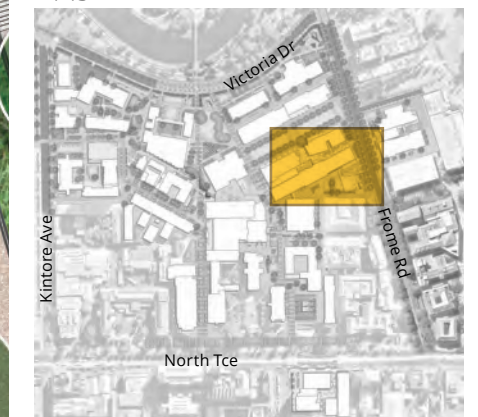




LANEWAY & ENGINEERING GARDENS (LONG TERM PLAN)



LOCATION PLAN  
N.T.S



LEGEND

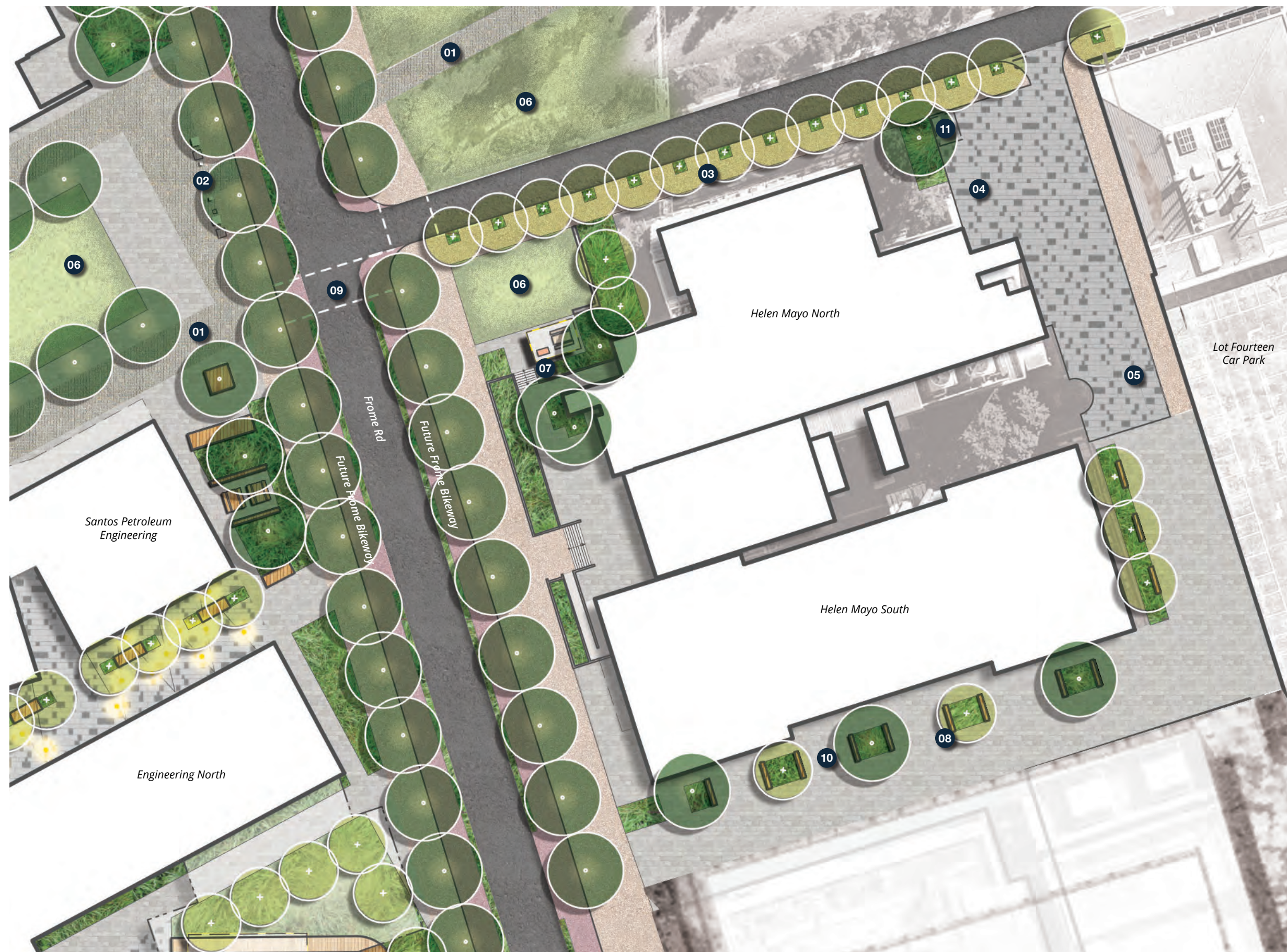
- 01 Engineering Laneway with catenary lighting and seating
- 02 Accessible car parking Seating
- 03 deck
- 04 Daybed
- 05 Lawn area
- 06 Table tennis table
- 07 BBQ / Shelter / Communal table
- 08 Canopy
- 09 Pedestrian priority service lane
- 10 Delivery zone
- 11 Potential future removal of Engineering Annexe (long term plan)
- 12 Bike Hub



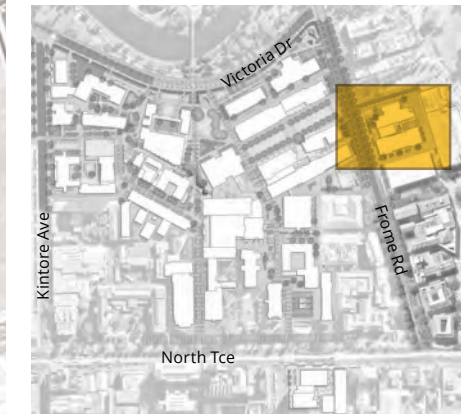
SCALE: 1:500@A3



## HELEN MAYO PRECINCT & BOTANIC GARDENS INTERFACE



### LOCATION PLAN N.T.S



### LEGEND

- 01 Stone setts 'Heritage Trail' \*
- 02 Relocated Mitchell Gates on Barr Smith Axis
- 03 Footpath to Lot Fourteen car park \*
- 04 Rationalised loading zone
- 05 Accessible car parking
- 06 Lawn area \*
- 07 BBQ / Shelter / Communal table
- 08 Tree planting with seating
- 09 Improved pedestrian crossing \*
- 10 Delivery zone
- 11 Service Hub

### NOTES

\* Further consultation with external stakeholders including City of Adelaide, Renewal SA, SA Health and Art Gallery is required to realise these concepts.



SCALE: 1:500@A3



## HELEN MAYO PRECINCT & BOTANIC GARDENS INTERFACE: ARTIST IMPRESSION



LOCATION PLAN  
N.T.S

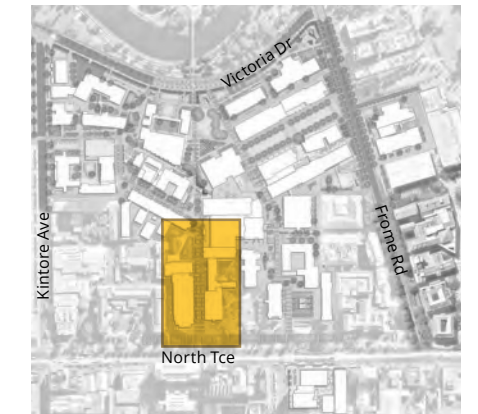




WESTERN DRIVE



LOCATION PLAN  
N.T.S

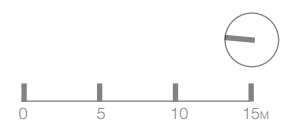


LEGEND

- 01 Art Gallery Lawn \*
- 02 Seating deck
- 03 Garden with integrated artwork and seating \*
- 04 High quality paving extending North Tce boulevard treatment \*

NOTES

\* Further consultation with external stakeholders including City of Adelaide, Renewal SA, SA Health and Art Gallery is required to realise these concepts.



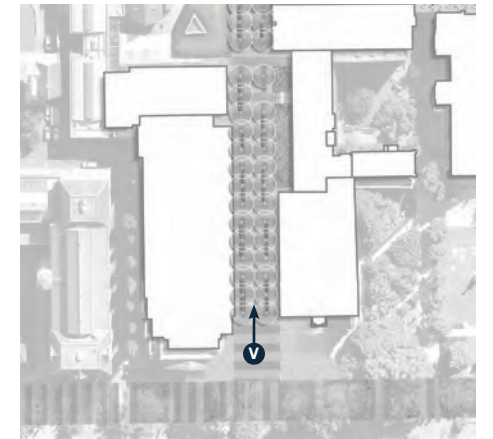
SCALE: 1:500@A3



WESTERN DRIVE: ARTIST IMPRESSION



LOCATION PLAN  
N.T.S

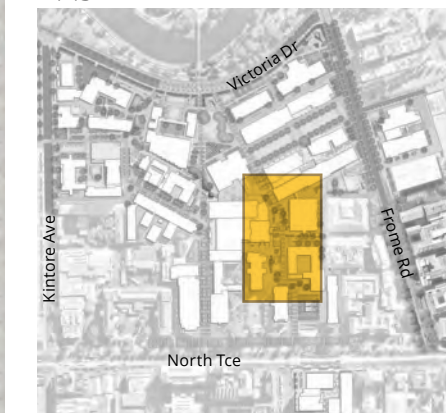




WALTER YOUNG GARDEN

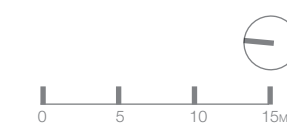


LOCATION PLAN  
N.T.S



LEGEND

- 01 High quality paving extending North Tce boulevard treatment
- 02 Rearranged stairs and ramp
- 03 Existing lift
- 04 Communal table
- 05 BBQ / Shelter / Communal table
- 06 Seating steps
- 07 Daybed
- 08 Lawn area
- 09 Seating deck
- 10 Rationalised loading area
- 11 Accessible car parking
- 12 Bike Hub (On Level 3 integrated with potential plaza redevelopment)
- 13 Service Hub (Level 1)



SCALE: 1:500@A3



WATER YOUNG GARDEN: ARTIST IMPRESSION



LOCATION PLAN  
N.T.S





COLOMBO PLAN ALUMNI COURT



LOCATION PLAN  
N.T.S



LEGEND

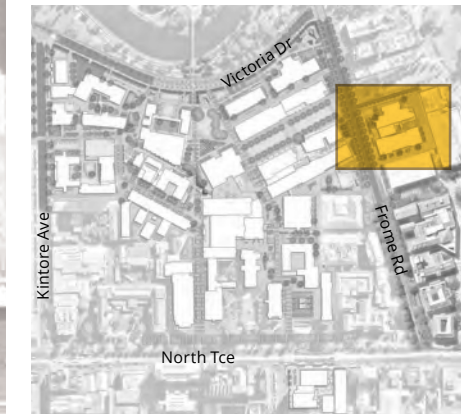
- 01 Widened stairs
- 02 Lightweight shade sail
- 03 Planter box with seating
- 04 Paving super graphic
- 05 High quality paving extending North Tce boulevard treatment
- 06 Existing umbrellas and tables



## NEXUS 10 PRECINCT



### LOCATION PLAN N.T.S



### LEGEND

- 01 Pedestrian ramp
- 02 Planter boxes
- 03 Lounge tables
- 04 Catenary lighting
- 05 Amphitheatre
- 06 Additional stairs from Pulteney St



SCALE: 1:500@A3



NEXUS 10 PRECINCT: ARTIST IMPRESSION



LOCATION PLAN  
N.T.S





## PLAN OVERLAYS

### Pedestrian Movement

A hierarchy of major and minor walkways are proposed that provide direct east-west and north-south access through the campus.

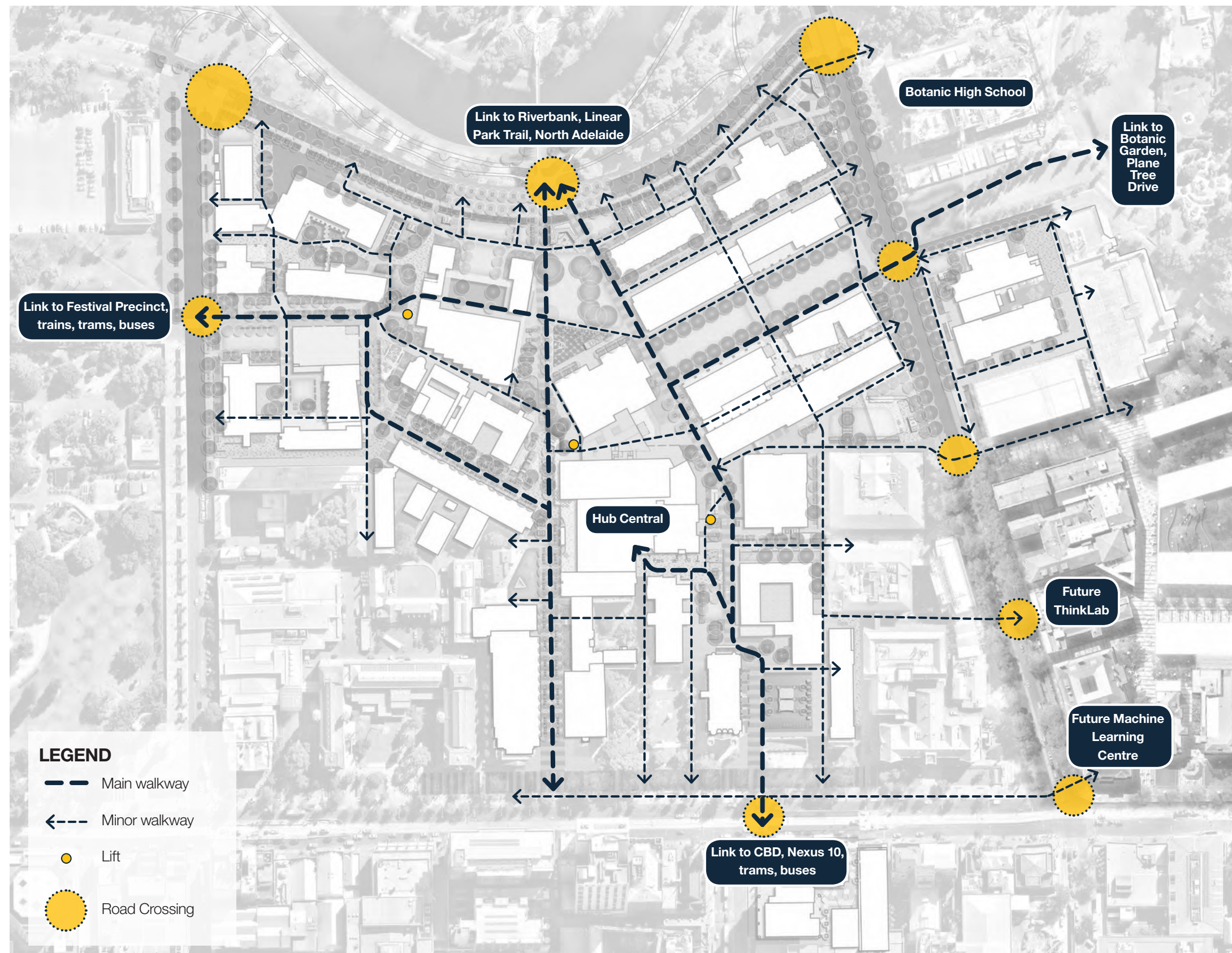
The alignment of these routes respond to pedestrian desire lines, provide direct and practical connections, and are separated from vehicle circulation routes where possible.

Pedestrian activity through the campus via Frome Road and Kintore Avenue will significantly increase as a result of the future Botanic High School and future University buildings (and other development) at the former Royal Adelaide Hospital site.

Gate 13 (Kintore Avenue) provides a direct link through the campus to these future developments from various public transport stops (train, tram, bus). In addition, the proposed upgrade of the Path of Honour between Kintore Avenue and King William Road, will attract more users to this access point. To strengthen this link, we have recommended a new passenger lift and upgraded stairs to be installed on the western side of Union House to provide access from the Path of Honour to the lower level of the campus and further to Botanic High.

Pedestrians crossing Frome Road will significantly increase at the junction of Victoria Drive (to Botanic High), as well as opposite the medical buildings and the relocation of the ThincLab to the eastern side of Frome Road.

The new tram stop on North Terrace will result in an increase in pedestrian access from North Terrace.



SCALE: 1:1500@A3

0 15 30 45M





## PLAN OVERLAYS

### Cycle Movement

Key cycling routes are identified to provide east-west and north-south access and are supported with wheeling ramps (and/or lifts) at stair locations.

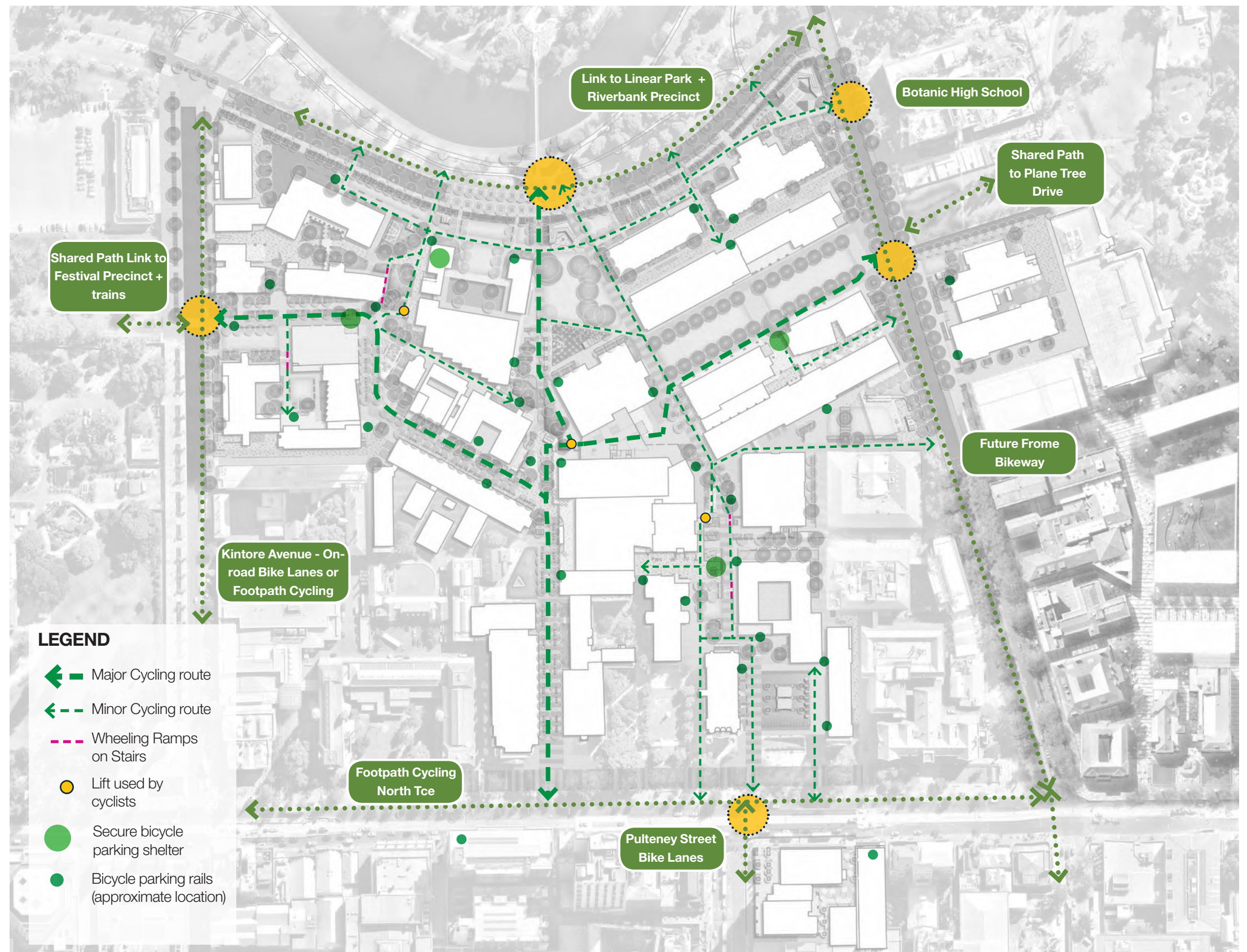
Where cycleways and walkways coincide, there will be sufficient width and appropriate alignment to minimise any potential conflict between pedestrians and cyclists.

Cyclist facilities surrounding the campus are good and includes the Linear Park Trail and the future Frome Bikeway, both separated from traffic. In addition, on-road bicycle lanes are provided on Kintore Avenue, and footpath cycling is facilitated with wide footpaths on Kintore Avenue and North Terrace.

A proposed BikeHub (showers, lockers and secure parking) in the new building that will replace the Horace Lamb Building will provide additional secure bicycle parks and other end-of-trip facilities.

Secure bicycle parking is provided at the buildings that have showers (Lady Symon, Badger and Hub Central) and other bicycle parking is provided by a set of rails at each building. Space will be created for these by the removal of car parks. A survey of students needs would help locate and identify the numbers of parks required.

A private bicycle rental company may also be encouraged to provide bicycles and bicycle parking pods on the campus.



SCALE: 1:1500@A3





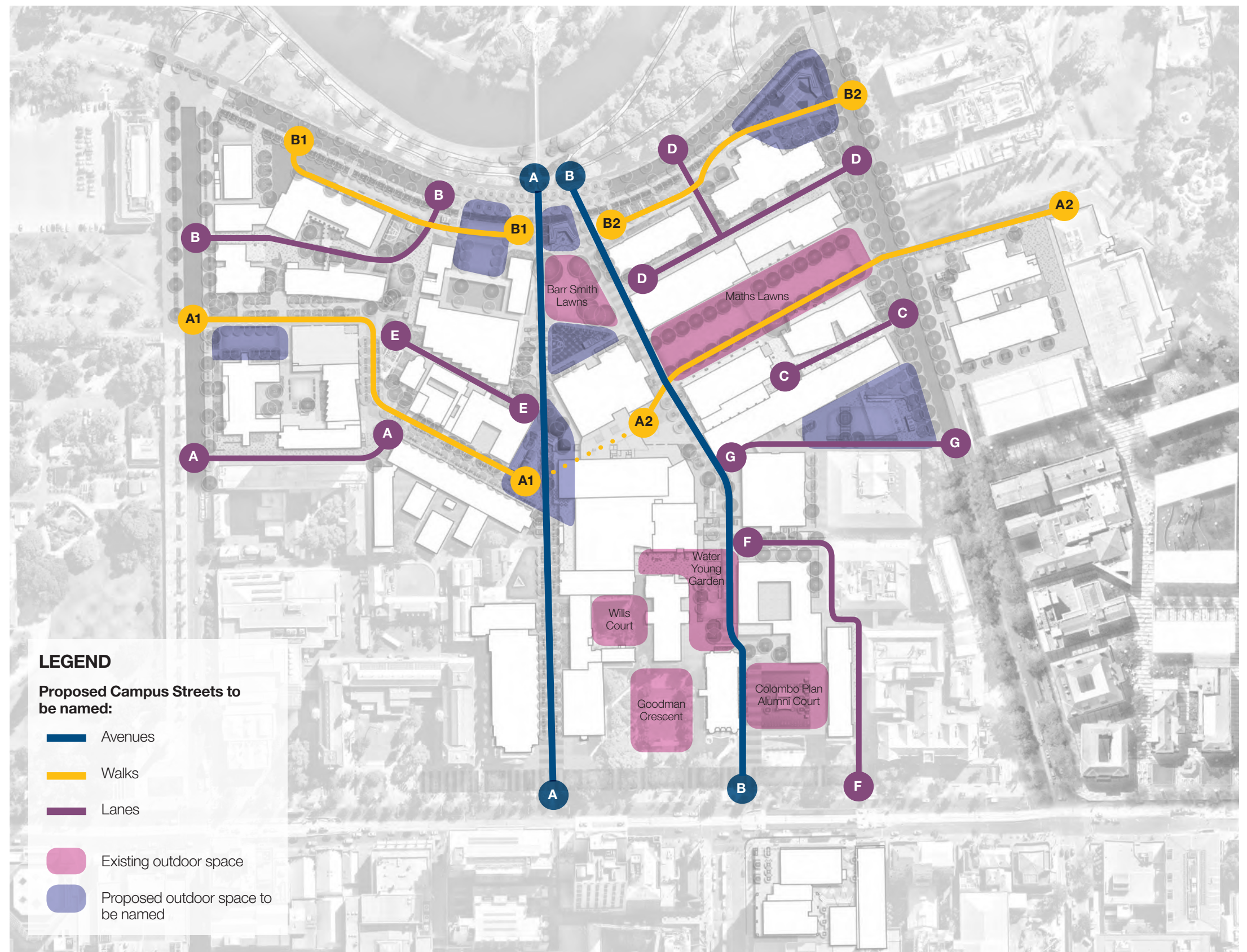
## PLAN OVERLAYS

### Wayfinding & Branding

The proposal of a network of Campus 'streets' to provide opportunities to improve legibility of the public realm. This network can potentially be divided into 3 categories (avenues, walks and lanes) to create a hierarchy of Campus streets and mirror the way people navigate in cities. This potential city-like grid can improve navigation within the Campus by providing decision making points and wayfinding signage location at street intersections.

This network of Campus streets also creates an opportunity to honour past students and staff with street names and outdoor spaces, also in a city-like system.

One entrance point in each side of the Campus would also receive Kurna names in acknowledgement to the traditional owners of the land.





## PLAN OVERLAYS

### Activation

To achieve the desired activation of the Campus, a series of outdoor spaces and infrastructure are to be provided throughout the Campus. Lawn and hard paving areas allow for a range of social activities and the provision of connection points for pop-up retails allow for easy set-up of events. Proposed infrastructure such as informal sports courts, table tennis tables, fitness equipments can improve activation of the Campus by encouraging users to stay longer without the need for programmed events. Small fixed BBQs and picnic settings would also be provided to cater for small student events without the need for temporary infrastructure to be assembled for every occasion.



#### LEGEND

-  Informal Sports Court
-  Table Tennis Table
-  BBQ
-  Fitness Equipment
-  Pop-up Retail Opportunities
-  Lawn Activity Space
-  Hardscape Activity Space
-  Dining / Food & Beverage

SCALE: 1:1500@A3

0 15 30 45m



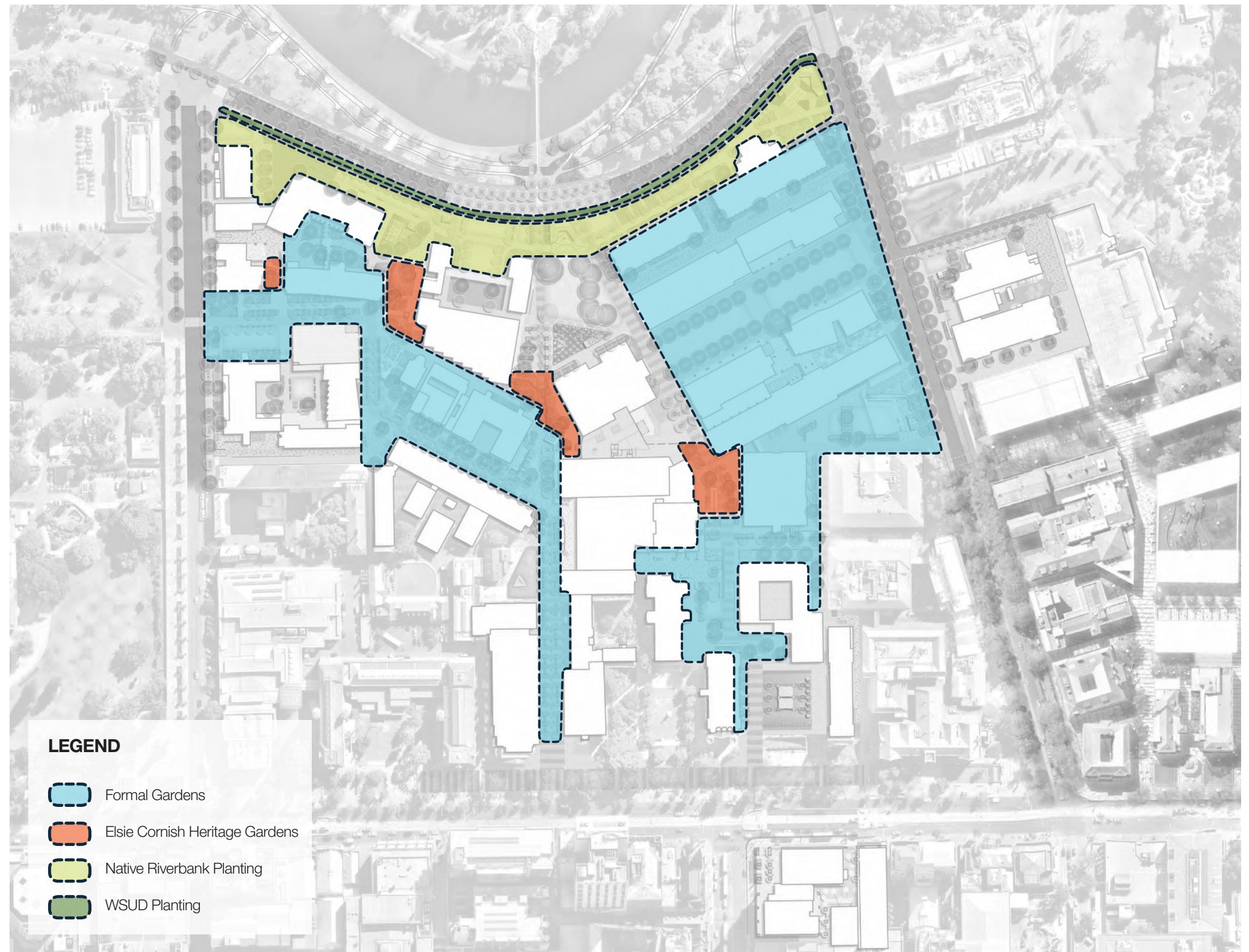


## PLAN OVERLAYS

### Planting Character

The proposed planting character emphasises the desire to connect the Campus to its surroundings. The planting character along Victoria Drive would follow the adjacent native riverbank planting while areas along Kintore Avenue, Frome Road and North Terrace would follow the formal gardens character.

The landscape areas along the remaining visible 'escarpment' would have succulent gardens as per the original Elsie Cornish heritage gardens.



SCALE: 1:1500@A3





## PLAN OVERLAYS

### Indigenous Culture Interpretation

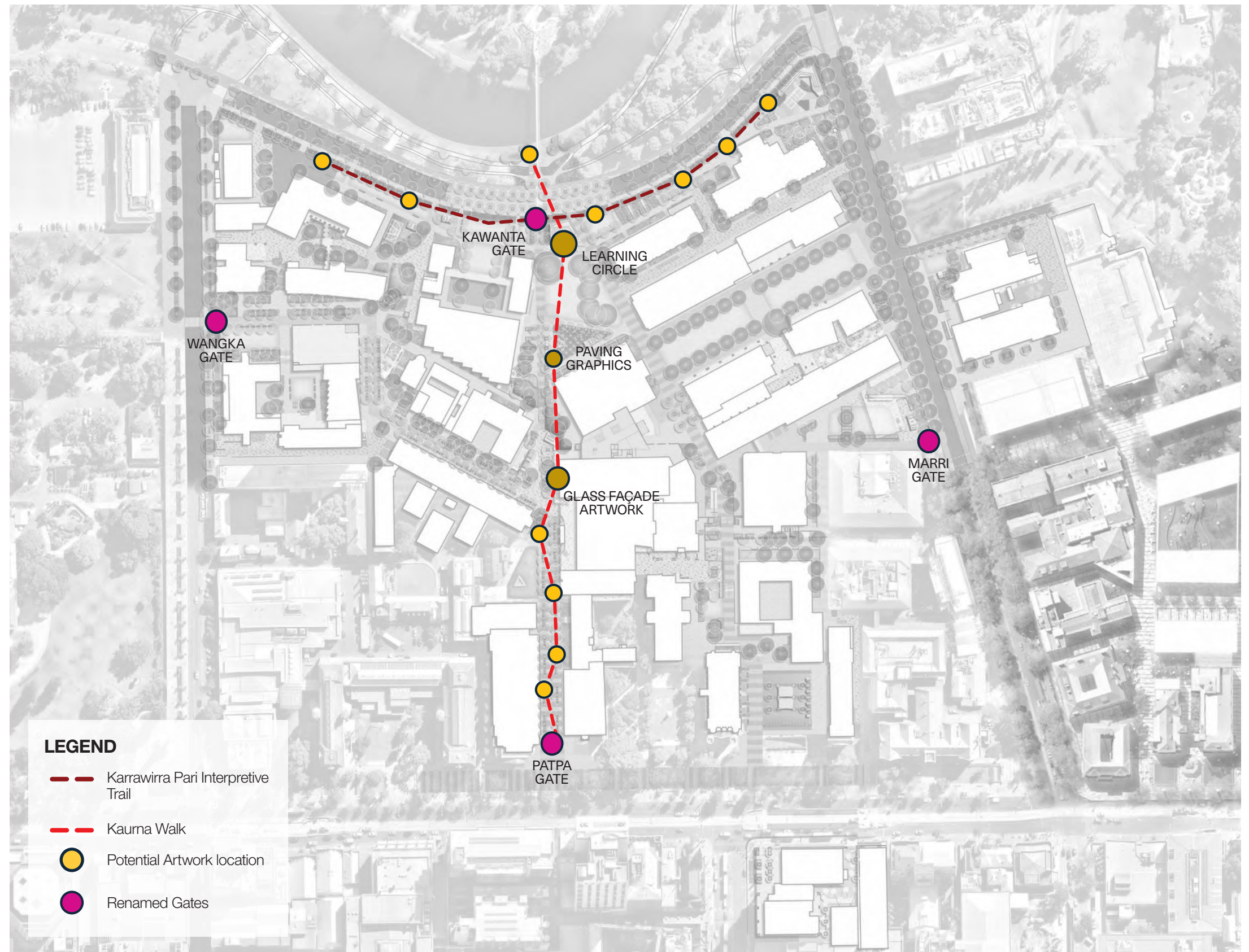
The concept design for the Campus public realm provide a great opportunity to incorporate information about Kurna culture.

Key aspects of their culture and their interaction to the Campus site and river would be displayed in cultural markers, wayfinding signage and artwork around the Campus.

A learning circle, proposed in front of the Barr Smith Lawn, would become a ceremonial and knowledge sharing space.

Arranging these elements to create 'walks' through the Campus would encourage people to explore the public realm of the Campus and, at the same time, provide information about the Kurna people.

It's also proposed that 4 campus gates would be renamed with Kurna words for North (Kawanta), South (Patpa), East (Marri) and West (Wangka)



SCALE: 1:1500@A3





## PLAN OVERLAYS

### Indigenous Culture Interpretation

#### Learning Circle



Amphitheatre Seating



Smoking Ceremony Preparation Platform

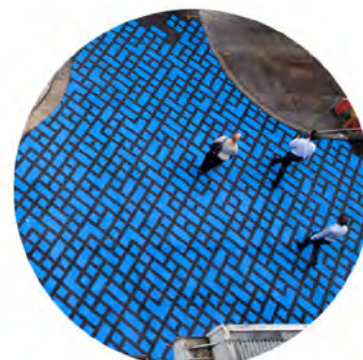


Learning Circle Event

#### Pavement Graphics



DuraTherm Asphalt Graphic



DuraTherm Asphalt Graphic

#### Glass Facade Artwork



Decorative Coloured Glass Film



Decorative Grey Glass Film



Acid-Etched Glass Artwork



Acid-Etched Glass Artwork

#### Cultural Walk



Natural Timber Poles with engraving



Steel Kaurna Cultural Marker



Electronic Kiosk



Timber in Kaurna engraving pattern



## PLAN OVERLAYS

### Outdoor Weather Protection

In order to improve activation of the Campus, it's important to provide outdoor spaces that can be used all year long. Existing covered spaces are generally at building entries. In addition to these locations, potential canopy structures and covered walkways related to future building developments can provide a more consistent sequence of weather protected spaces and encourage the use of the Campus public realm throughout the year.

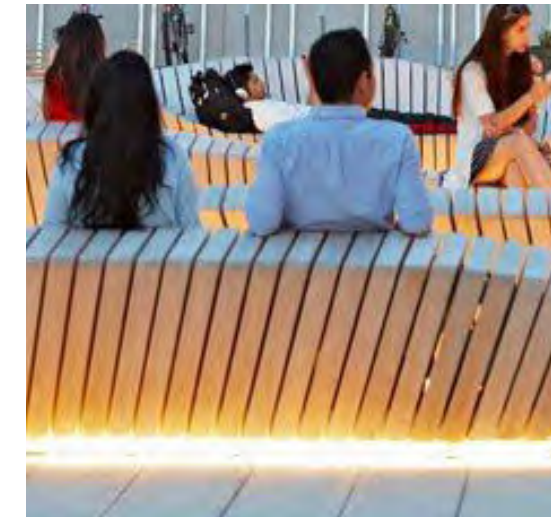
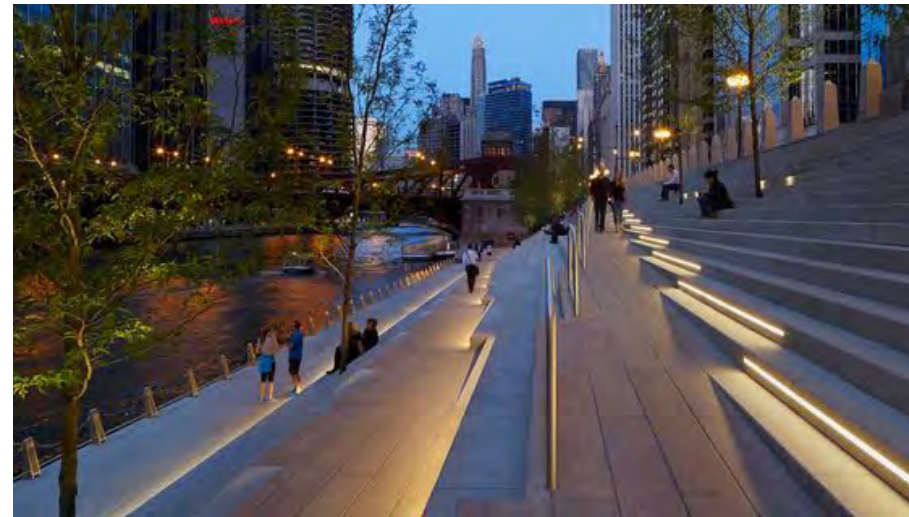


SCALE: 1:1500@A3





## LIGHTING

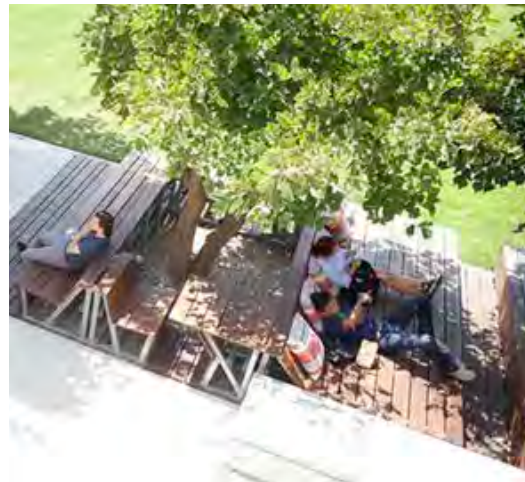


### NOTES

- Feature lighting integrated with furniture and urban elements as an additional to general lighting to ensure safety of public spaces around the Campus at night.



FURNITURE & STRUCTURES

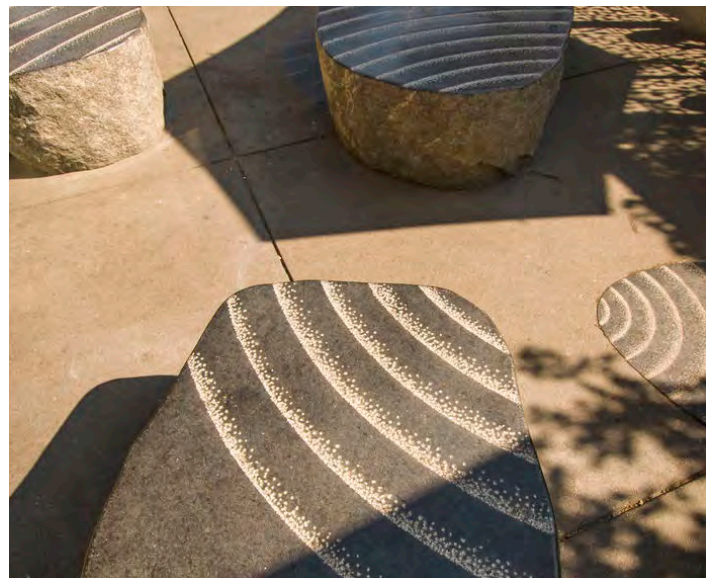
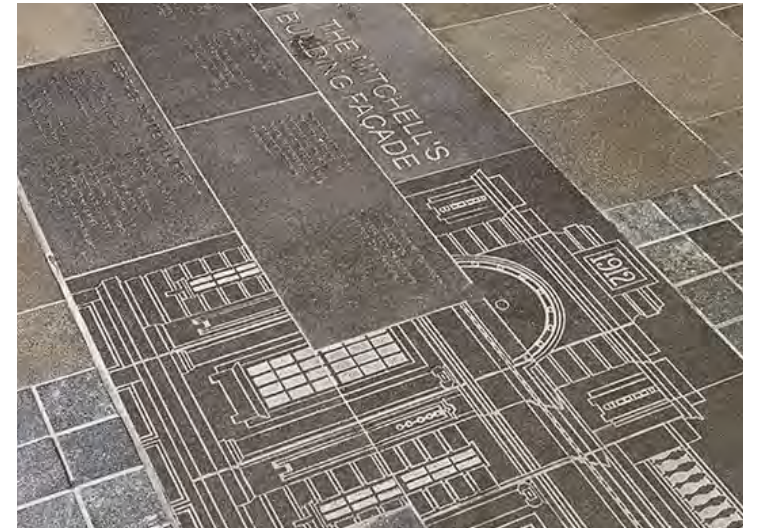


NOTES

- Placement and selection of furniture such as benches, walls, planters and bollards to help mitigate vehicle-ramming risks, specially at the edges of the Campus.



PUBLIC ART





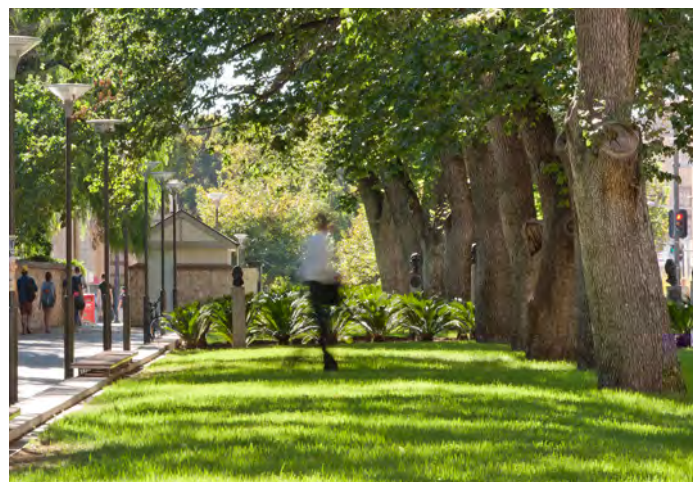
PAVING





PLANTING

Formal Gardens



Elsie Cornish Gardens



Informal / Indigenous Planting (Riverbank)



WSUD Raingardens

