

Key



Quad PAR LED DRGBW 5oh (5.5 kg) (144W)

24



Pharos LED Zoom Profile (14°/30°) M size goobo

6

Notes

DMX Allocation,
All in house fixtures are on universe 1 (A)
Address 1 through 126.
Universe 1.127 onwards is available.

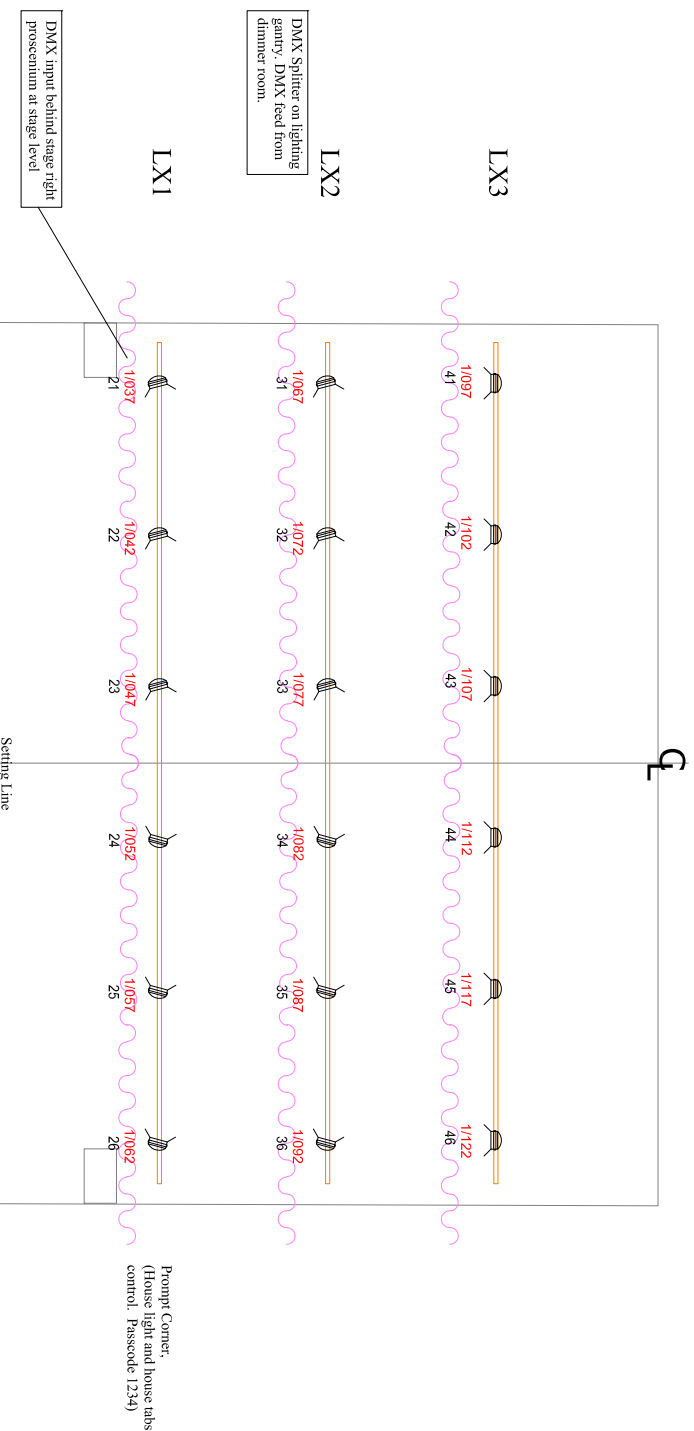
The venue lighting desk is GrandMA
Dot2 core (Version 1.3.2.2)

Please use Scott Theatre Master
showfile to start and then immediately
'SAVE AS' (YOUR SHOW NAME)

House lights can only be operated from
the stage managers desk in prompt
corner (down stage left) or from the
'bio-box' They cannot be remotely
operated from the rear of the auditorium.

Each lighting fixture is hard powered
from the dimmer room 12 way hard
power distribution box. Do not unplug or
change existing hardpower patch. Each
outlet is rated at 10 Amps.

This drawing and design remain the property of Matthew Britten on behalf of Scene Change
Adelaide.
This drawing represents visual concepts and construction suggestions only.
The designer is unqualified to determine the electrical or structural appropriateness of the
design and will not assume responsibility for improper engineering, construction, handling,
installation or use of the equipment.
All materials and construction must meet the most stringent local safety requirements.



Not to scale.



2015/16 National Award Winner
2015 National & Eastern Melbourne Award Winner
Scene Change Adelaide
Innovative & Creative Production Company
1999 Team 8 Employees



2016 NATIONAL WINNER
Scene Change Adelaide
Innovative & Creative Production Company
1999 Team 8 Employees



2017-2020
MEA HALL OF FAME
Scene Change Adelaide
Innovative & Creative Production Company
1999 Team 8 Employees

PROJECT Scott Theatre Lighting Master

DRAWING Lighting DMX Addresses

DRNG NO. SCAST12062018

SCALE Do Not Scale

REVISION 1

DRAWN BY Matthew Britten

DATE 12/06/2018