

# Environmental Compliance & Reporting Handbook

Infrastructure Branch

2022

**make  
history.**

<b>1. Background</b>	<b>2</b>
1.1. Obligations as a Public Office	2
1.2. Legal Compliance Framework	3
<b>2. Environmental &amp; Sustainability Legislation (C12)</b>	<b>5</b>
2.1. Roles and Responsibilities	6
2.2. Reporting	6
<b>3. Appendix</b>	<b>10</b>
3.1. Appendix 1. Environmental Data Capture & Reporting Diagram	10
3.2. Appendix 2. Scope of Data Collection	11

# 1. Background

The past decades have seen an ever increasing global awareness of environmental issues and the impact our decisions have on air, land and water quality. As such, there is a growing raft of legislation, including Acts, Regulations, Standards and Codes of Practice, designed to enhance and protect our natural environment.

Individuals and organisations, including the University of Adelaide, face a greater level of scrutiny than ever before from Federal, State, local government regulators and associated community expectations. Enforcement mechanisms (such as monitoring, audits and penalties for non-compliance), incentives and the promotion of self-regulation, seek to put environmental compliance at the forefront of many business decisions.

The management of environmental compliance is a key task if the University's reputation, resources, accreditations and long-term survival are to be preserved.

This handbook draws not only on the University's Legal Compliance framework, but on the University's history of recognising the importance of environmental management and sustainability, both in the academic programs it delivers and the management of its campuses.

Compliance usually refers to behaving in accordance with legislation, such as driving within the maximum speed limit or not endangering protected wildlife. More simply expressed, compliance is *a willingness to follow a prescribed course of action*, such as acting according to certain accepted standards, or observing official requirements – including legislation. It follows that “non-compliance” is a failure to conform to those prescribed courses of action, either deliberately or inadvertently. Non-compliance has very visible consequences, ranging from inconvenience and embarrassment, additional cost or loss of a contract, through to prosecution, fines or severe damage to the University's reputation. Compliance can sometimes seem less tangible than non-compliance, as it tends not to have such visible consequences. In order for a compliance system to be implemented successfully, it is important that each person recognises and accepts the role they play in legal compliance within the University. Individual commitment to a compliance culture is a critical factor in achieving compliance on a University-wide scale.

This document outlines environmental compliance as it relates to the Infrastructure Branch and details specific reporting methodologies, roles and responsibilities.

## 1.1. Obligations as a Public Officer

University personnel should also note that they are public officers under the Independent Commission Against Corruption Act 2012. Public Officers must report corruption, maladministration or misconduct in public administration. You must make a report to the Office of Public Integrity (OPI) as well as any reporting obligations set out in this document. For further information please refer to:

<https://www.adelaide.edu.au/legalandrisk/integrity-and-accountability>

## 1.2. Legal Compliance Framework

The University has a Legal Compliance Framework. This Framework has developed a tier rating for legislation based on extent of application, obligations it imposes and the seriousness of risk associated with non-compliance.

### 1.2.1.1. Classification of Legislation

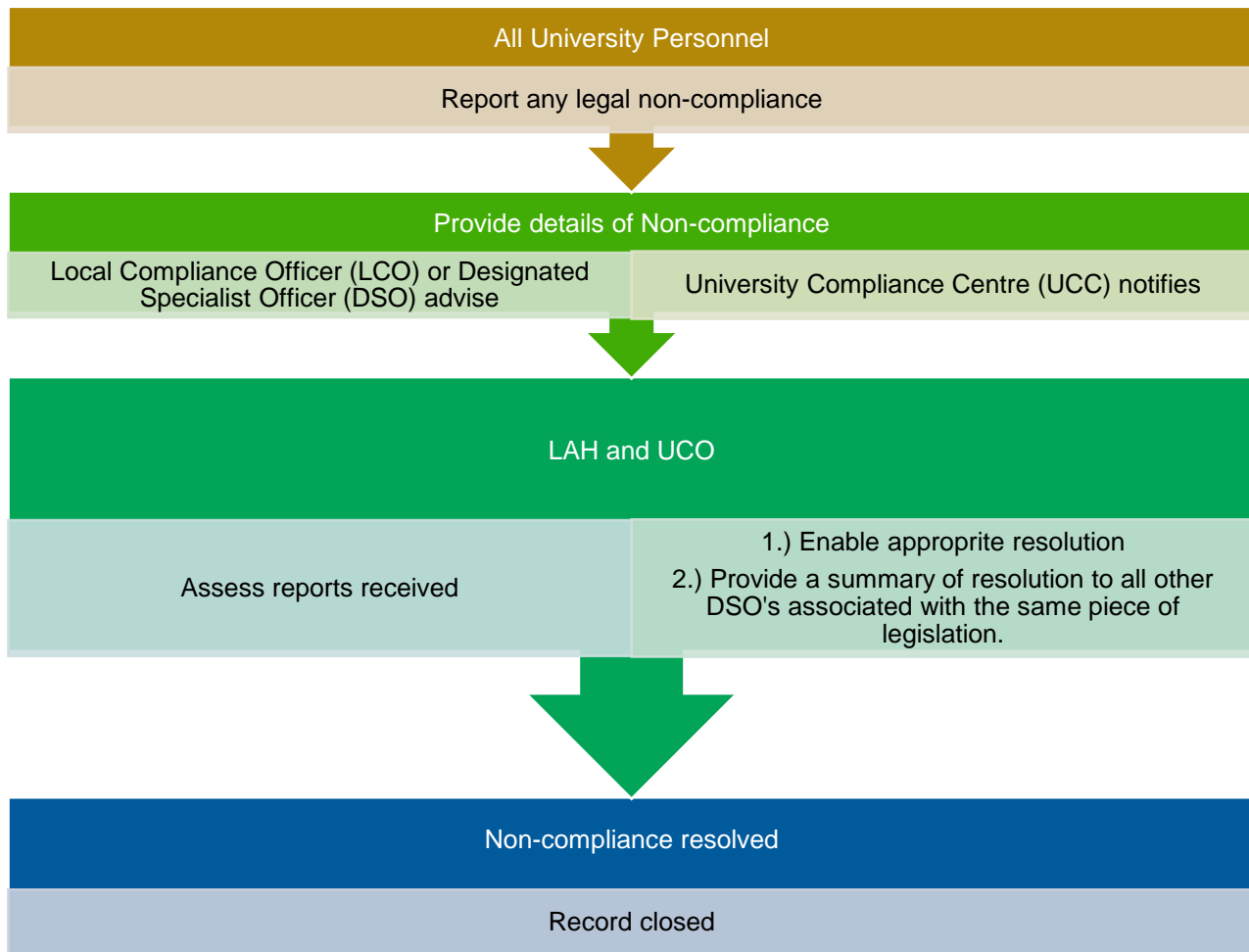
Tier	Explanation
<b>Tier 1</b>	University wide concern with high risks associated with non-compliance. Eg: Environment Protection Act
<b>Tier 2</b>	University wide concern with lower risks associated with non-compliance Eg: National Parks and Wildlife Act
<b>Tier 3</b>	Local level concern with compliance notified centrally Eg: National Greenhouse and Energy Reporting Act
<b>Tier 4</b>	Local level concern - lower risk to the university as a whole but may be high risk to specific areas. Eg: Burial and Cremation Act
<b>Tier 5</b>	Awareness of legislation exists but no active compliance monitoring is required Eg: Dog and Cat Management Act

Some University personnel will be more active in the compliance process than others. Some staff will primarily identify non-compliance, some will help to educate others as to their specific legal obligations and others will predominantly carry out tasks to ensure a compliance breach is resolved. Some staff may have no formal role, but *all* staff are expected to work to actively promote a positive compliance culture at the University. Staff are also expected to report any event, activity, omission or incident that is, or is potentially, non-compliant with the University's legislative obligations. You can discuss with an LCO or DSO if you are uncertain.

The Legal Compliance Framework defines the responsibilities of six roles to be played in identifying compliance requirements, disseminating information and resources, monitoring and reporting on compliance activity, and certifying compliance performance.

Culture of Compliance	Local Area responsibilities	University-wide responsibilities
All Staff and those actively engaged with the University's activities, including contractors	Local Area Head (LAH)	University Compliance Owner (UCO)
	Head of Faculty/Division (HFD)	Designated Specialist Officer (DSO)
	Local Compliance Officer (LCO)	University Compliance Centre (UCC)

For a detailed description of the roles and responsibilities, see the [Legal Compliance Handbook](#).



**Figure 1: Legal non-compliance reporting process**

Recording of non-compliances (or near non-compliances) provides a permanent record of the University's pro-active management of its legislative obligations. This provides assurance to senior managers, governance bodies and external regulators.

## 2. Environmental & Sustainability Legislation (C12)

The Director of Infrastructure is a University Compliance Owner (UCO) and has the overarching responsibility for legislation which sits within category 12 “environment and sustainability” below. As the UCO, the Director must certify annually that the University is meeting its obligations. The UCO is also responsible for ensuring external licensing and reporting to the relevant government agency.

	Legislation	Designated Specialist Officer (DSO)	Reporting Commitments
<b>Tier 1</b>	Environment Protection Act 1993 (Cth)	Director, Capital Projects & Facilities Management Director, Estate Planning & Investment	EPA – Environmental Authorisation - Section 45(2) – Licensed Waste Activities (annual) National Pollutant Inventory (annual)
<b>Tier 2</b>	National Parks and Wildlife Act 1972 (SA)	Director, Capital Projects & Facilities Management Director, Estate Planning & Investment	
	Product Stewardship Act 2011 (SA)	Director, Estate Planning & Investment	
<b>Tier 3</b>	National Greenhouse and Energy Reporting Act 2007 (Cth)	Director, Estate Planning & Investment	Section 19 (annual)
	Climate Change and Greenhouse Emissions Reduction Act 2007 (SA)	Director, Estate Planning & Investment	
	Building Energy Efficiency Disclosure Act 2010 No. 67 (Cth)	Director, Capital Projects & Facilities Management	
	Native Vegetation Act 1991 (SA)	Director, Capital Projects & Facilities Management	
	Landscape South Australia Act 2019 (SA)	Director, Capital Projects & Facilities Management	
	Ozone Protection and Synthetic Greenhouse Gas Management Act 1989 (Cth)	Director, Capital Projects & Facilities Management	
	Product Stewardship Act 2011 (SA)	Director, Estate Planning & Investment	
	Single-use and Other Plastic Products (Waste Avoidance) Act 2020 (SA)	Director, Estate Planning & Investment	

## 2.1. Roles and Responsibilities

The University and its employees have a “general duty” to protect the environment, primarily through harm and pollution prevention. Further, managers or staff acting in positions where their decisions may have significant environmental impacts must consider the more specific obligations under the legislation and behave accordingly. This may also include reporting a non-compliance with these obligations. Personal liability can be attached to Directors and Officers of the University whose decisions adversely affect the environment and fines or even jail terms may result from serious compliance breaches.

Across the Infrastructure Branch, staff make a collective effort to comply with environmental legislation and assist the Sustainable Development Planner to collect data and respond to reporting requirements.

	Reporting Requirement	Designated Specialist Officer	Data Collection & Technical Reporting
<b>Environment Protection Act 1993 (Cth)</b>	Environment Protection Act 1993 (Cth) EPA License (University wide permits)	Director, Estate Planning & Investment	Sustainable Development Planner
	National Pollutant Inventory	Director, Estate Planning & Investment	Sustainable Development Planner
	Incident Reporting	Director, Capital Projects & Facilities Management	Relevant University Officers
<b>National Greenhouse and Energy Reporting Act 2007 (Cth)</b>	Section 19	Director, Estate Planning & Investment	Sustainable Development Planner
<b>Staff Education</b>	Factsheets and associated communication pieces for internal staff	Director, Estate Planning & Investment Director, Infrastructure Strategy and Support Services	Manager, Communication & Engagement

## 2.2. Reporting

The Sustainable Development Planner maintains an environmental data management system and is responsible for maintaining relevant data sets to enable the University to respond and report to environmental legislation. Below is an example of how environmental compliance is maintained and work flowed through the Branch and broader University.

### Environmental Protection Act 1993 (Cth)

The Infrastructure Branch maintains the University’s Environmental Authorisation to produce listed wastes. The University’s current license under Part 6 of the Environmental Protection Act 1993 was issued on 30 April 2022 and expires on 30 April 2027. The license covers the North Terrace Campus, Roseworthy Campus, Thebarton Campus, the Waite Campus and Adelaide Health and Medical Sciences Building. To maintain the license, the Infrastructure Branch prepares an annual report to the

regulator to ensure specified volumes of waste are appropriate. All other aspects of the EPA Act are managed and responded to locally by Schools and Branches.

### National Pollutant Inventory

The University reports to the National Pollutant Inventory for Campuses that meet relevant emission thresholds in relation to heavy metals and gases. The Waite Campus often does not meet reporting thresholds however the University continues to report in a voluntary capacity.

### National Greenhouse and Energy Reporting Act 2007 (Cth)

The University has been reporting under the NGER Act since its inception in 2007. Annual reporting under this framework has a detailed reporting procedure developed to ensure consistent and accurate data collection practices.

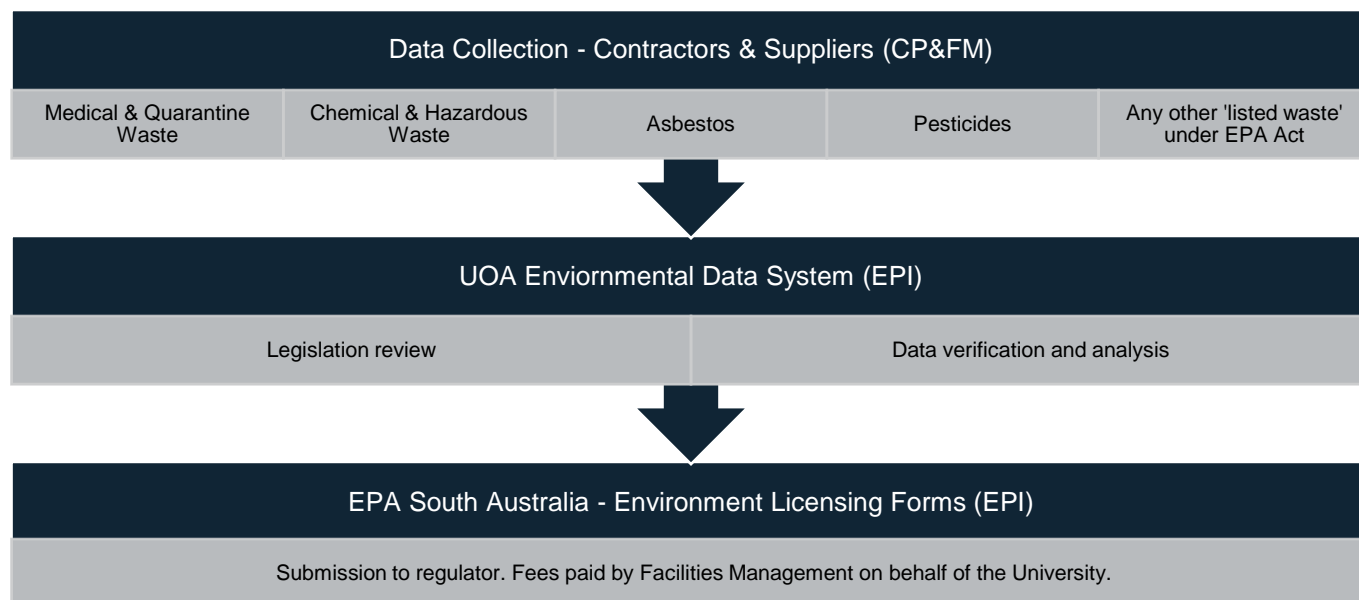
### Greenhouse Gas Reporting Protocol

In 2017 the University commissioned its first Greenhouse Gas Inventory under the international protocol.

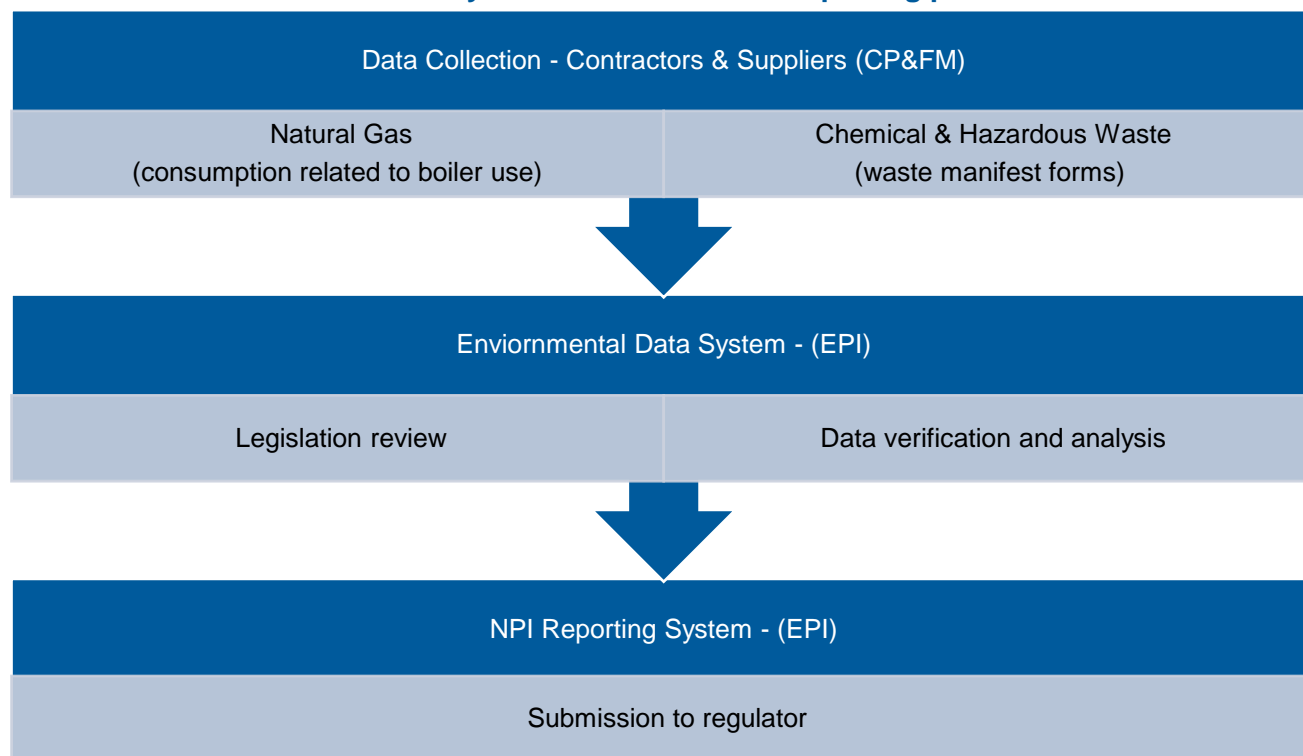
### Internal Reporting

The Sustainable Development Planner also provides environmental reporting for a number of unregulated internal reporting requirements including environmental metrics and reduction target reporting for executive committees and benchmarking within the higher education sector.

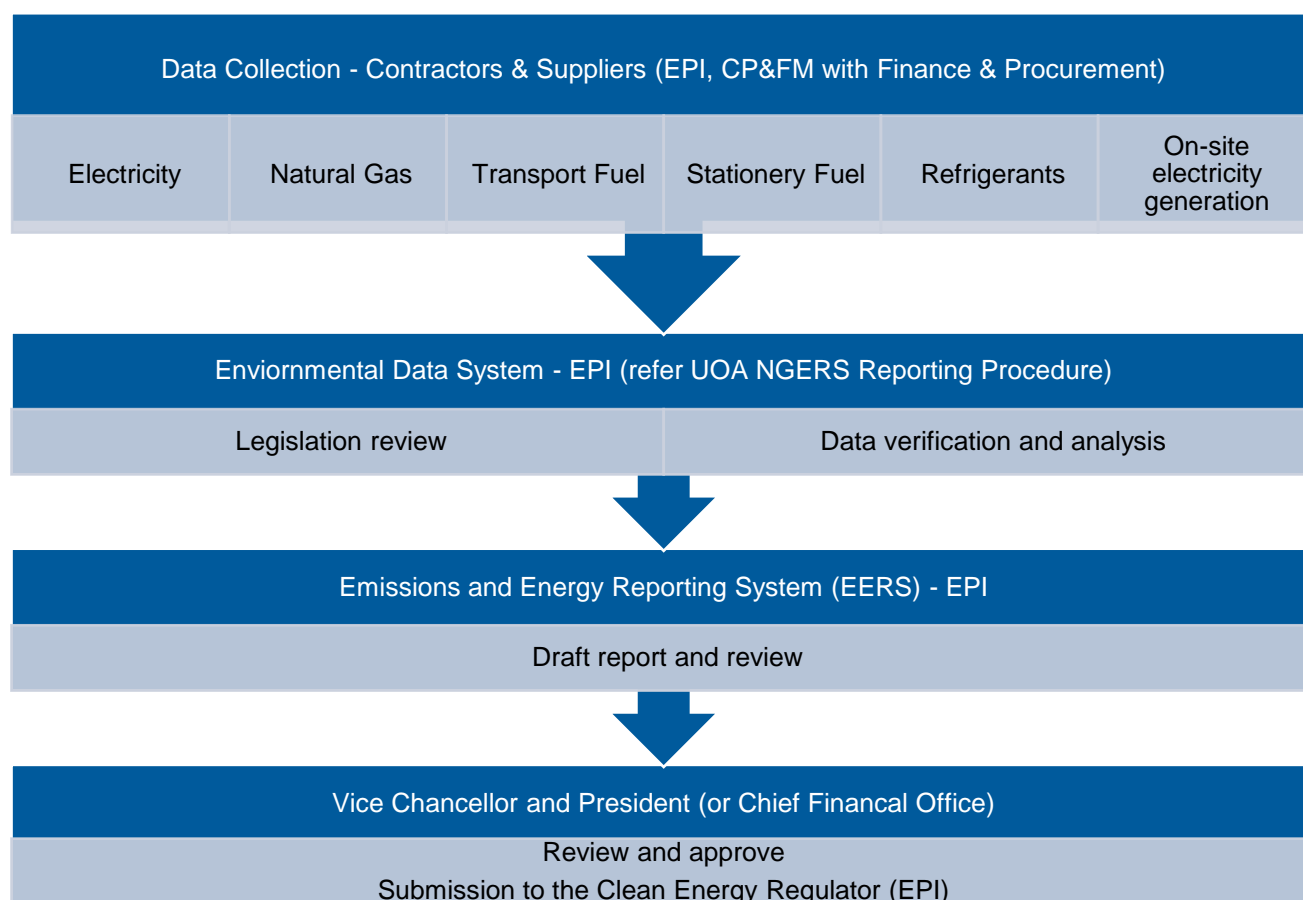
#### 2.2.1. EPA Hazardous Waste Licence – Data collection and reporting process



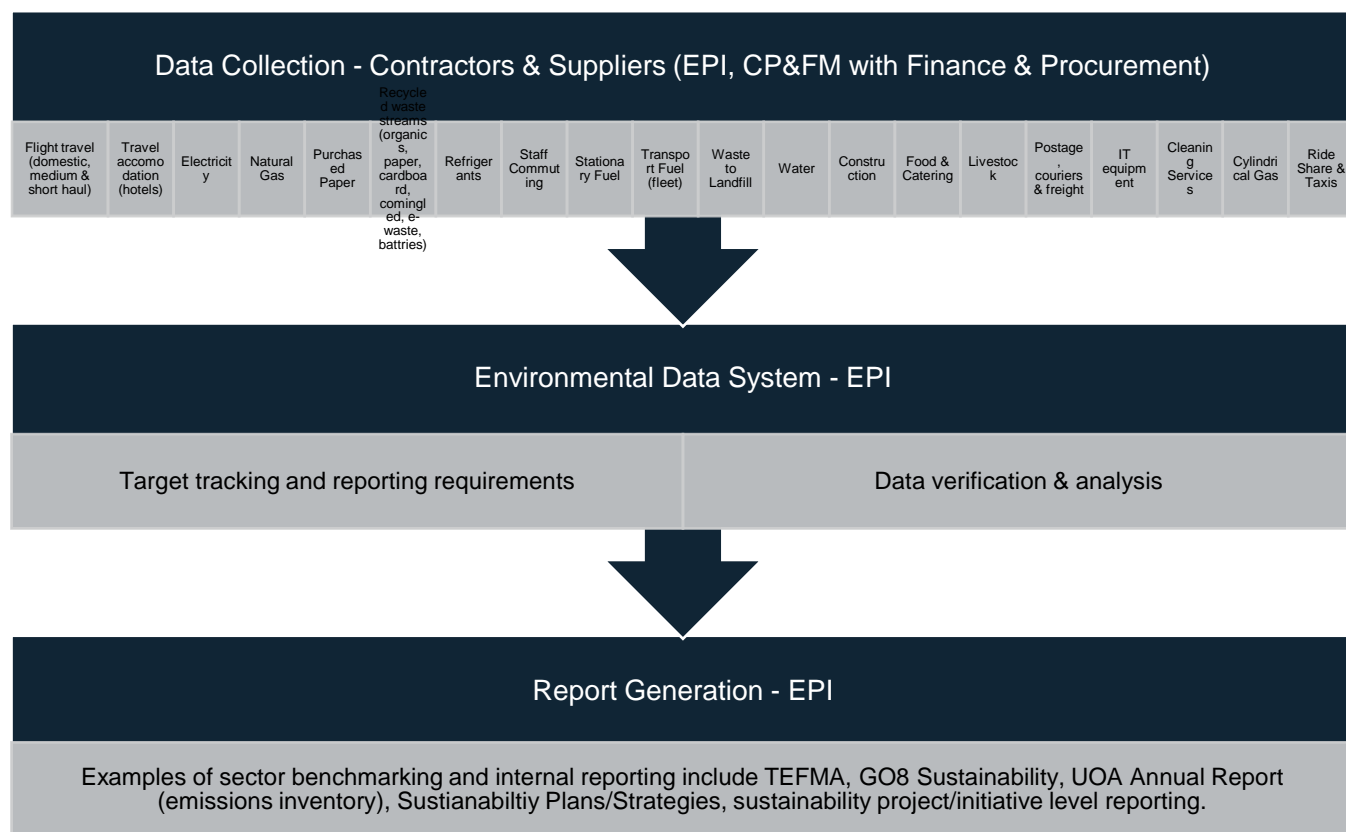
### 2.2.2. National Pollutant Inventory – Data collection and reporting process



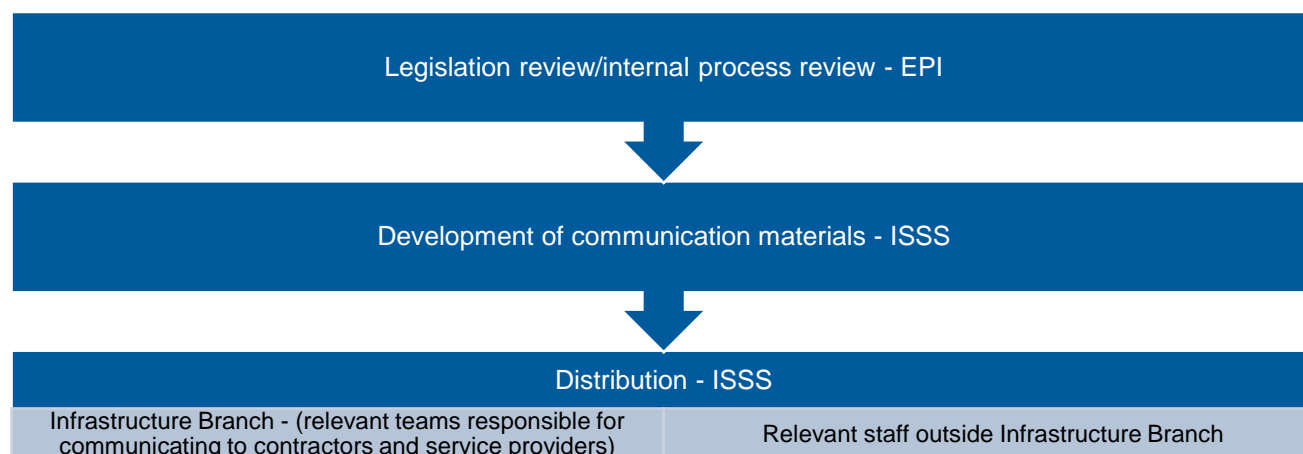
### 2.2.3. National Greenhouse and Energy Report – Data collection and reporting process



## 2.2.4. Sector benchmarking, internal reporting and environmental target tracking

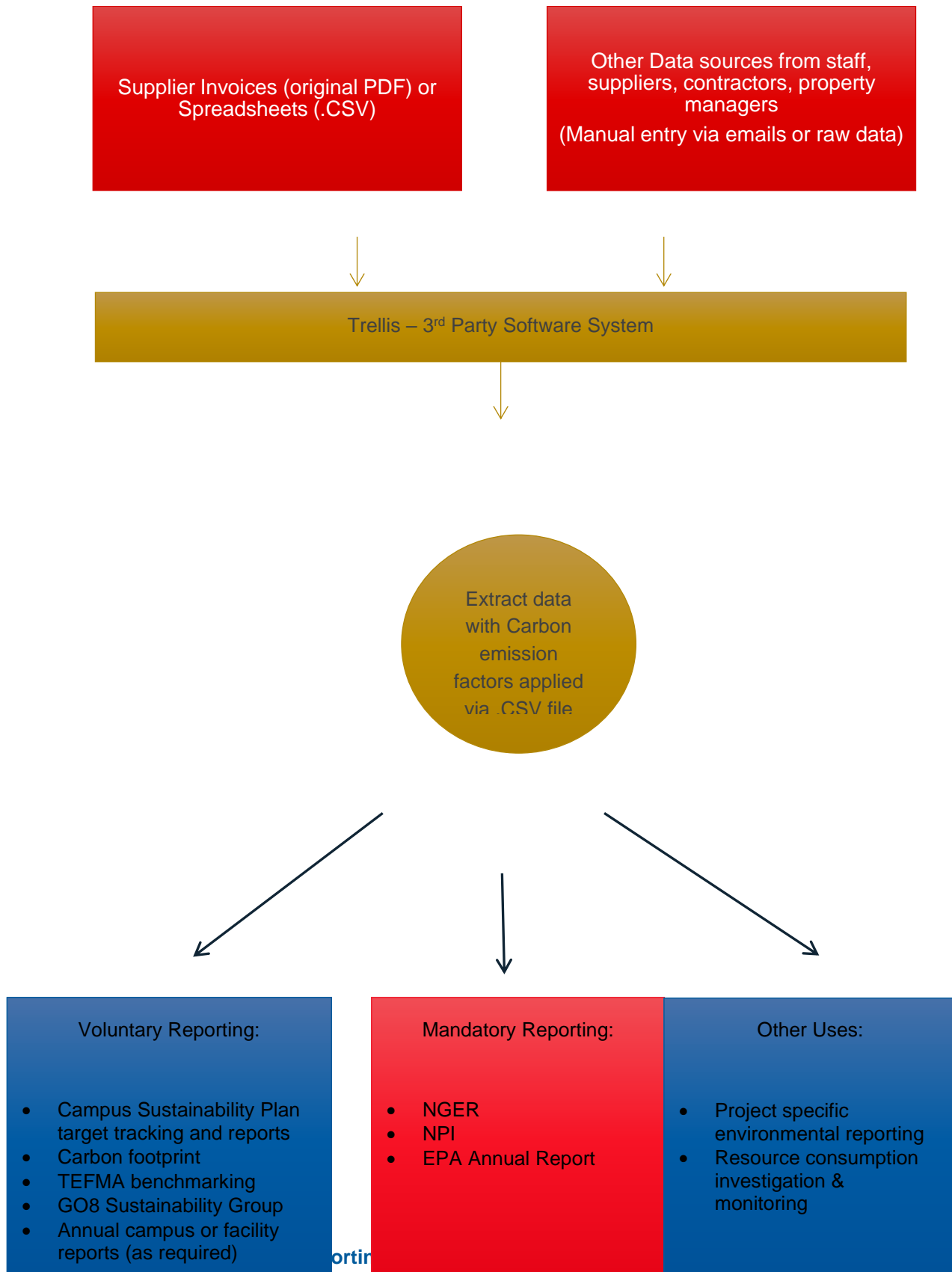


## 2.2.5. Staff education



# 3. Appendix

## 3.1. Appendix 1. Environmental Data Capture & Reporting Diagram



## 3.2. Appendix 2. Scope of Data Collection

Facility	Address	Meter	Factor	Provider	Unit
Campus Travel	North Terrace Adelaide SA 5005	UOA:BUSINESS TRAVEL - FLIGHTS	BusinessTravel:Long Flight>3700kmIncRF :[km]	Campus Travel	km
Campus Travel	North Terrace Adelaide SA 5005	UOA:BUSINESS TRAVEL - FLIGHTS	BusinessTravel:Med Flight463- 3700kmIncRF:[km]	Campus Travel	km
Campus Travel	North Terrace Adelaide SA 5005	UOA:BUSINESS TRAVEL - FLIGHTS	BusinessTravel:Shor tFlight	Campus Travel	km
1 Harbour View	1 Harbour View Port Lincoln South Australia 5606	2002118732	Electricity:Grid- connected:SA:[kWh]	Origin Energy	kWh
1/26 Roberts Terrace	1/26 Roberts Terrace Whyalla South Australia 5600	2001499506	Electricity:Grid- connected:SA:[kWh]	Origin Energy	kWh
1/26 Roberts Terrace	1/26 Roberts Terrace Whyalla South Australia 5600	2001499505	Electricity:Grid- connected:SA:[kWh]	Origin Energy	kWh
10 DEVON ST LONSDALE SA 5160	10 DEVON ST LONSDALE SA 5160	2001683945	Electricity:Grid- connected:SA:[kWh]	Origin Energy	kWh
10 Mackinnon Parade	10 Mackinnon Parade North Adelaide South Australia 5006	2001094091	Electricity:Grid- connected:SA:[kWh]	Origin Energy	kWh
10 Mackinnon Parade	10 Mackinnon Parade North Adelaide South Australia 5006	2002269713	Electricity:Grid- connected:SA:[kWh]	Origin Energy	kWh
10 Pulteney St	North Terrace Adelaide South Australia 5005	SAAAAAA205	Electricity:Grid- connected:SA:[kWh]	Infigen/lb erdrola	kWh
10/88 Barry Street	10/88 Barry Street Port Augusta South Australia 5700	2001579767	Electricity:Grid- connected:SA:[kWh]	Origin Energy	kWh
11/88 Barry Street	11/88 Barry Street Port Augusta SA 5700	2001579768	Electricity:Grid- connected:SA:[kWh]	Origin Energy	kWh
115 Grenfell Street	115 Grenfell Street Adelaide SA 5000	14868	Electricity:Grid- connected:SA:[kWh]	Collier's Internatio nal	kWh
115 Grenfell Street	115 Grenfell Street Adelaide SA 5000	14868	Electricity:Grid- connected:SA:[kWh]	Energy Metering Services	kWh
115 Grenfell Street	115 Grenfell Street Adelaide SA 5000	14340	Electricity:Grid- connected:SA:[kWh]	Collier's Internatio nal	kWh
115 Grenfell Street	115 Grenfell Street Adelaide SA 5000	14340	Electricity:Grid- connected:SA:[kWh]	Energy Metering Services	kWh
115 Grenfell Street	115 Grenfell Street Adelaide SA 5000	16280	Electricity:Grid- connected:SA:[kWh]	Collier's Internatio nal	kWh
115 Grenfell Street	115 Grenfell Street Adelaide SA 5000	16280	Electricity:Grid- connected:SA:[kWh]	Energy Metering Services	kWh
12/7 Regent Street	12/7 Regent Street Hackney South Australia 5069	2001092203	Electricity:Grid- connected:SA:[kWh]	Origin Energy	kWh

<b>13 Mudla Wirra Road</b>	13 Mudla Wirra Road Roseworthy South Australia 5371	2001392012	Electricity:Grid- connected:SA:[kWh]	Origin Energy	kWh
<b>13 Wasleys Road</b>	13 Wasleys Road Roseworthy SA 5371	2001392014	Electricity:Grid- connected:SA:[kWh]	Origin Energy	kWh
<b>142 New West Road</b>	142 New West Road Port Lincoln South Australia 5606	2001683966	Electricity:Grid- connected:SA:[kWh]	Origin Energy	kWh
<b>149 Applebee Rd</b>	U42 149 Applebee Rd Middle Beach SA 5501	2001006591	Electricity:Grid- connected:SA:[kWh]	Origin Energy	kWh
<b>16-26 Finnis Street</b>	16-26 Finnis Street North Adelaide South Australia 5006	2001674703	Electricity:Grid- connected:SA:[kWh]	Origin Energy	kWh
<b>16-26 Finnis Street</b>	16-26 Finnis Street North Adelaide South Australia 5006	2001674704	Electricity:Grid- connected:SA:[kWh]	Origin Energy	kWh
<b>17 Boase Crescent</b>	17 Boase Crescent Walleroo South Australia 5556	2002187352	Electricity:Grid- connected:SA:[kWh]	Origin Energy	kWh
<b>19 Fifth Street</b>	19 Fifth Street Minlaton South Australia 5575	2001606695	Electricity:Grid- connected:SA:[kWh]	Origin Energy	kWh
<b>19 West Parkway</b>	19 West Parkway Mount Barker South Australia 5251	2002251353	Electricity:Grid- connected:SA:[kWh]	Origin Energy	kWh
<b>19/82 Barry Street</b>	19/82 Barry Street Port Augusta South Australia 5700	2001579746	Electricity:Grid- connected:SA:[kWh]	Origin Energy	kWh
<b>2 Hawker Street</b>	2 Hawker Street Bowden South Australia 5007	2001145713	Electricity:Grid- connected:SA:[kWh]	Origin Energy	kWh
<b>2 TILBROOK AVE MINLATON SA 5575</b>	2 TILBROOK AVE MINLATON SA 5575	2001606968	Electricity:Grid- connected:SA:[kWh]	Origin Energy	kWh
<b>2/7 Albert Street</b>	2/7 Albert Street Dulwich South Australia 5065	2001047094	Electricity:Grid- connected:SA:[kWh]	Origin Energy	kWh
<b>20/82 Barry Street</b>	20/82 Barry Street Port Augusta South Australia 5700	2001579747	Electricity:Grid- connected:SA:[kWh]	Origin Energy	kWh
<b>20/82 Barry Street</b>	20/82 Barry Street Port Augusta South Australia 5700	2001499507	Electricity:Grid- connected:SA:[kWh]	Origin Energy	kWh
<b>21/82 Barry Street</b>	21/82 Barry Street Port Augusta South Australia 5700	2001579748	Electricity:Grid- connected:SA:[kWh]	Origin Energy	kWh
<b>210 Grote Street - The Village</b>	210 Grote Street Adelaide SA 5000	2002142191	Electricity:Grid- connected:SA:[kWh]	Infigen/lb erdrola	kWh
<b>210 Grote Street - The Village</b>	210 Grote Street Adelaide SA 5000	2002141795	Electricity:Grid- connected:SA:[kWh]	Origin Energy	kWh
<b>22/82 Barry Street</b>	22/82 Barry Street Port Augusta South Australia 5700	2001579749	Electricity:Grid- connected:SA:[kWh]	Origin Energy	kWh
<b>23/82 Barry Street</b>	23/82 Barry Street Port Augusta South Australia 5700	2001579750	Electricity:Grid- connected:SA:[kWh]	Origin Energy	kWh
<b>24/82 Barry Street</b>	24/82 Barry Street Port Augusta South Australia 5700	2001579751	Electricity:Grid- connected:SA:[kWh]	Origin Energy	kWh

<b>26/44 Rundle Street</b>	26/44 Rundle Street Kent Town South Australia 5067	2001052993	Electricity:Grid- connected:SA:[kWh]	Origin Energy	kWh
<b>27 Queen Street</b>	27 Queen Street  Thebarton SA 5031	2001669092	Electricity:Grid- connected:SA:[kWh]	Origin Energy	kWh
<b>29A Queen Street</b>	29A Queen Street  Thebarton SA 5031	SAAAAAE805	Electricity:Grid- connected:SA:[kWh]	Origin Energy	kWh
<b>3 Harbour View</b>	3 Harbour View Port Lincoln South Australia 5606	2002118731	Electricity:Grid- connected:SA:[kWh]	Origin Energy	kWh
<b>3 Samuel Street</b>	3 Samuel Street Maitland South Australia 5573	2001433238	Electricity:Grid- connected:SA:[kWh]	Origin Energy	kWh
<b>3/26 Roberts Terrace</b>	3/26 Roberts Terrace Whyalla South Australia 5600	2001499508	Electricity:Grid- connected:SA:[kWh]	Origin Energy	kWh
<b>3/4-6 Henry Street</b>	3/4-6 Henry Street Plympton South Australia 5038	2001283986	Electricity:Grid- connected:SA:[kWh]	Origin Energy	kWh
<b>3/4-6 Henry Street</b>	3/4-6 Henry Street Plympton South Australia 5038	2001283978	Electricity:Grid- connected:SA:[kWh]	Origin Energy	kWh
<b>33 Reid Street Thebarton SA 5031</b>	33 Reid Street Thebarton SA 5031	2002231112	Electricity:Grid- connected:SA:[kWh]	Infigen/lb erdrola	kWh
<b>39-44 Oxford Tce</b>	39-44 Oxford Tce Port Lincoln South Australia 5606	2002162875	Electricity:Grid- connected:SA:[kWh]	Origin Energy	kWh
<b>4/26 Roberts Terrace</b>	4/26 Roberts Terrace Whyalla South Australia 5600	2001499509	Electricity:Grid- connected:SA:[kWh]	Origin Energy	kWh
<b>5 Morialta Crescent</b>	5 Morialta Crescent Port Lincoln South Australia 5606	2001422982	Electricity:Grid- connected:SA:[kWh]	Origin Energy	kWh
<b>5/26 Roberts Terrace</b>	5/26 Roberts Terrace Whyalla South Australia 5600	2001499510	Electricity:Grid- connected:SA:[kWh]	Origin Energy	kWh
<b>5/77 Margaret Street</b>	5/77 Margaret Street North Adelaide South Australia 5000	2001095528	Electricity:Grid- connected:SA:[kWh]	Origin Energy	kWh
<b>506 FULLARTON RD URRBRAE SA 5064</b>	506 FULLARTON RD URRBRAE SA 5064	2002288047	Electricity:Grid- connected:SA:[kWh]	Origin Energy	kWh
<b>55-77 King William Rd</b>	55-77 King William Rd Adelaide SA 5000	2001052634	Electricity:Grid- connected:SA:[kWh]	Origin Energy	kWh
<b>58 O'LOUGHLIN TCE CEDUNA SA 5690</b>	58 O'LOUGHLIN TCE CEDUNA SA 5690	2001599902	Electricity:Grid- connected:SA:[kWh]	Origin Energy	kWh
<b>6/26 Roberts Terrace</b>	6/26 Roberts Terrace Whyalla South Australia 5600	2001499511	Electricity:Grid- connected:SA:[kWh]	Origin Energy	kWh
<b>6/4-6 Henry Street</b>	6/4-6 Henry Street Plympton South Australia 5038	2001283981	Electricity:Grid- connected:SA:[kWh]	Origin Energy	kWh
<b>6/7 Regent Street</b>	6/7 Regent Street Hackney South Australia 5069	2001092196	Electricity:Grid- connected:SA:[kWh]	Origin Energy	kWh
<b>6/77 Margaret Street</b>	6/77 Margaret Street North Adelaide South Australia 5006	2001095529	Electricity:Grid- connected:SA:[kWh]	Origin Energy	kWh

<b>65/178-180 Angas Street</b>	65/178-180 Angas Street Adelaide South Australia 5000	2001049526	Electricity:Grid- connected:SA:[kWh]	Origin Energy	kWh
<b>66/178-180 Angas Street</b>	66/178-180 Angas Street Adelaide South Australia 5000	2001049527	Electricity:Grid- connected:SA:[kWh]	Origin Energy	kWh
<b>7/7 Regent Street</b>	7/7 Regent Street Hackney South Australia 5069	2001092197	Electricity:Grid- connected:SA:[kWh]	Origin Energy	kWh
<b>7/77 Margaret Street</b>	7/77 Margaret Street North Adelaide South Australia 5000	2001095530	Electricity:Grid- connected:SA:[kWh]	Origin Energy	kWh
<b>7/88 Barry Street</b>	7/88 Barry Street Port Augusta South Australia 5700	2001579764	Electricity:Grid- connected:SA:[kWh]	Origin Energy	kWh
<b>8/61 Walkerville Terrace</b>	8/61 Walkerville Terrace Gilberton South Australia 5081	2001096389	Electricity:Grid- connected:SA:[kWh]	Origin Energy	kWh
<b>8/88 Barry Street</b>	8/88 Barry Street Port Augusta South Australia 5700	2001579765	Electricity:Grid- connected:SA:[kWh]	Origin Energy	kWh
<b>80 Margaret Street</b>	80 Margaret Street North Adelaide South Australia 5006	2001095513	Electricity:Grid- connected:SA:[kWh]	Origin Energy	kWh
<b>9/61 Walkerville Terrace</b>	9/61 Walkerville Terrace Gilberton South Australia 5081	2001096391	Electricity:Grid- connected:SA:[kWh]	Origin Energy	kWh
<b>97 Drayton Street</b>	97 Drayton Street Bowden South Australia 5007	2001145712	Electricity:Grid- connected:SA:[kWh]	Origin Energy	kWh
<b>Adelaide Parklands</b>	War Memorial Drive Adelaide Parklands Adelaide South Australia 5006	2001094090	Electricity:Grid- connected:SA:[kWh]	Origin Energy	kWh
<b>Adelaide Parklands</b>	War Memorial Drive Adelaide Parklands Adelaide South Australia 5006	2001756423	Electricity:Grid- connected:SA:[kWh]	Origin Energy	kWh
<b>Admin Building</b>	Roseworthy Campus The University of Adelaide Roseworthy South Australia 5371	SAAAAAB057	Electricity:Grid- connected:SA:[kWh]	Infigen/lb erdrola	kWh
<b>Agronomy</b>	Roseworthy Campus The University of Adelaide Roseworthy South Australia 5371	SAAAAAB059	Electricity:Grid- connected:SA:[kWh]	Infigen/lb erdrola	kWh
<b>AHMS</b>	100 North Terrace Adelaide South Australia 5000	2002299767	Electricity:Grid- connected:SA:[kWh]	Infigen/lb erdrola	kWh
<b>AMIL, Lot 14 North Tce, ADELAIDE, SA, 5000</b>	Am II, Lot 14 North Tce, ADELAIDE, SA, 5000	2002354139	Electricity:Grid- connected:SA:[kWh]	Infigen/lb erdrola	kWh
<b>Animal House</b>	Waite Road Urrbrae South Australia 5064	SAAAAAA368	Electricity:Grid- connected:SA:[kWh]	Infigen/lb erdrola	kWh
<b>AWRI 1</b>	Waite Road 100 Hartley Grove Urrbrae South Australia 5064	2001372418	Electricity:Grid- connected:SA:[kWh]	Origin Energy	kWh
<b>Barr Smith South</b>	North Terrace Adelaide South Australia 5005	SAAAAAA406	Electricity:Grid- connected:SA:[kWh]	Infigen/lb erdrola	kWh

<b>Barr Smith South</b>	North Terrace Adelaide South Australia 5005	UofA_NT_Renewable Energy_Barr Smith South	Electricity:Grid- connected:[kWh]	Not specified	kWh
<b>Building 11 - Mech Eng</b>	Reid Street Thebarton SA 5031	31840		Collier's Internatio nal	
<b>Building 11 - Physics and Maths</b>	Reid Street Thebarton SA 5031	31841		Collier's Internatio nal	
<b>Coobowie</b>	Coobowie Coobowie South Australia 5583	2001523370	Electricity:Grid- connected:SA:[kWh]	Origin Energy	kWh
<b>Davies Building</b>	Waite Road Urrbrae South Australia 5064	SAAAAAA371	Electricity:Grid- connected:SA:[kWh]	Infigen/lb erdrola	kWh
<b>Davies Building</b>	Waite Road Urrbrae South Australia 5064	UofA_WT_Renewable Energy_Davies Solar	Electricity:Grid- connected:[kWh]	Not specified	kWh
<b>Engineering Maths</b>	North Terrace Adelaide South Australia 5005	SAAAAAE672	Electricity:Grid- connected:SA:[kWh]	Infigen/lb erdrola	kWh
<b>Engineering North</b>	North Terrace Adelaide South Australia 5005	SAAAAAA407	Electricity:Grid- connected:SA:[kWh]	Infigen/lb erdrola	kWh
<b>Equine Centre</b>	Roseworthy Campus The University of Adelaide Roseworthy South Australia 5371	2002259766	Electricity:Grid- connected:SA:[kWh]	Infigen/lb erdrola	kWh
<b>Equine Centre</b>	Roseworthy Campus The University of Adelaide Roseworthy South Australia 5371	UofA_RW_Renewable Energy_Equine Centre	Electricity:Grid- connected:[kWh]	Not specified	kWh
<b>F12/88 Barry Street</b>	F12/88 Barry Street Port Augusta South Australia 5700	2001579769	Electricity:Grid- connected:SA:[kWh]	Origin Energy	kWh
<b>F9/88 Barry Street</b>	F9/88 Barry Street Port Augusta South Australia 5700	2001579766	Electricity:Grid- connected:SA:[kWh]	Origin Energy	kWh
<b>Gawler Place Medical Practice</b>	Gawler Place Medical Practice 1/49-51 Gawler Place Adelaide South Australia 5000	UofA_UC_GP_Elec			
<b>Glenthorne Farm</b>	5B Majors Road O'Halloran Hill South Australia 5158	2001005467	Electricity:Grid- connected:SA:[kWh]	Origin Energy	kWh
<b>Glenthorne Farm</b>	5B Majors Road O'Halloran Hill South Australia 5158	2001249939	Electricity:Grid- connected:SA:[kWh]	Origin Energy	kWh
<b>Highbury</b>	Unihealth 1009 Lower North East Road Highbury South Australia 5089	UofA_UC_Highbury_Ele c	Electricity:Grid- connected:[kWh]	Not specified	kWh
<b>HV (Vet School &amp; Equine Centre)</b>	693 MUDLA WIRRA RD, WASLEYS, SA, 5400	2002352909	Electricity:Grid- connected:SA:[kWh]	Infigen/lb erdrola	kWh
<b>HVO Insectory</b>	Waite Road Urrbrae South Australia 5064	SAAAAAA369	Electricity:Grid- connected:SA:[kWh]	Infigen/lb erdrola	kWh
<b>Ingkarni Wardli</b>	North Terrace Adelaide South Australia 5005	2002209417	Electricity:Grid- connected:SA:[kWh]	Infigen/lb erdrola	kWh

<b>Ingkarni Wardli</b>	North Terrace Adelaide South Australia 5005	UofA_NT_Renewable Energy_Ingkarni Wardli	Electricity:Grid- connected:[kWh]	Not specified	kWh
<b>Johnson</b>	North Terrace Adelaide South Australia 5005	SAAAAAA843	Electricity:Grid- connected:SA:[kWh]	Infigen/lb erdrola	kWh
<b>Ligertwood</b>	North Terrace Adelaide South Australia 5005	SAAAAAA408	Electricity:Grid- connected:SA:[kWh]	Infigen/lb erdrola	kWh
<b>LOT 23 ENTRANCE CT PORT LINCOLN</b>	LOT 23 ENTRANCE CT PORT LINCOLN	2002264925	Electricity:Grid- connected:SA:[kWh]	Origin Energy	kWh
<b>LOT 24 ENTRANCE CT PORT LINCOLN</b>	LOT 24 ENTRANCE CT PORT LINCOLN	2002264926	Electricity:Grid- connected:SA:[kWh]	Origin Energy	kWh
<b>Lot Fourteen</b>	Lot Fourteen	118286	Electricity:Grid- connected:SA:[kWh]	Collier's Internatio nal	kWh
<b>Lot Fourteen</b>	Lot Fourteen	118001	Electricity:Grid- connected:SA:[kWh]	Collier's Internatio nal	kWh
<b>Lot Fourteen</b>	Lot Fourteen	118001	Electricity:Grid- connected:SA:[kWh]	Energy Metering Services	kWh
<b>Mawson</b>	North Terrace Adelaide South Australia 5005	2002244347	Electricity:Grid- connected:SA:[kWh]	Infigen/lb erdrola	kWh
<b>Medical School</b>	Frome Road Adelaide South Australia 5005	SAAAAAA409	Electricity:Grid- connected:SA:[kWh]	Infigen/lb erdrola	kWh
<b>Medical School South</b>	North Terrace Adelaide South Australia 5005	SAAAAAE673	Electricity:Grid- connected:SA:[kWh]	Infigen/lb erdrola	kWh
<b>Minlaton Medical Centre</b>	Minlaton Medical Centre 7 South Terrace Minlaton South Australia 5575	UofA_UC_Minlaton_Ele c	Electricity:Grid- connected:SA:[kWh]	Not specified	kWh
<b>Molecular Life Science</b>	North Terrace Campus University of Adelaide South Australia 5005	SAAAAAE674	Electricity:Grid- connected:SA:[kWh]	Infigen/lb erdrola	kWh
<b>Mudla Wirra</b>	Mudla Wirra Road Wasleys South Australia 5400	2001392005	Electricity:Grid- connected:SA:[kWh]	Origin Energy	kWh
<b>Mudla Wirra</b>	Mudla Wirra Road Wasleys South Australia 5400	2001392013	Electricity:Grid- connected:SA:[kWh]	Origin Energy	kWh
<b>Napier Precinct</b>	North Terrace Adelaide South Australia 5005	2002142809	Electricity:Grid- connected:SA:[kWh]	Infigen/lb erdrola	kWh
<b>Napier Precinct</b>	North Terrace Adelaide South Australia 5005	UofA_NT_Renewable Energy_Kenneth Wills	Electricity:Grid- connected:[kWh]	Not specified	kWh
<b>National Wine Centre</b>	Cnr Botanic and Hackney Road Adelaide South Australia 5000	2001000746	Electricity:Grid- connected:SA:[kWh]	Infigen/lb erdrola	kWh
<b>North Glass House</b>	Waite Road Urrbrae South Australia 5064	SAAAAAA367	Electricity:Grid- connected:SA:[kWh]	Infigen/lb erdrola	kWh
<b>North Terrace Campus - Non- Specific</b>	North Terrace Adelaide South Australia 5005	2001094100	Electricity:Grid- connected:SA:[kWh]	Origin Energy	kWh

<b>North Terrace Campus - Non-Specific</b>	North Terrace Adelaide South Australia 5005	UofA_NT_Renewable Energy_Engineering South Solar	Electricity:Grid- connected:[kWh]	Not specified	kWh
<b>Physics</b>	North Terrace Adelaide South Australia 5005	2002108654	Electricity:Grid- connected:SA:[kWh]	Infigen/lb erdrola	kWh
<b>Piggery</b>	Roseworthy Campus The University of Adelaide Roseworthy South Australia 5371	SAAAAAB066	Electricity:Grid- connected:SA:[kWh]	Infigen/lb erdrola	kWh
<b>Plant Accelerator</b>	Waite Road Urrbrae South Australia 5064	2002210259	Electricity:Grid- connected:SA:[kWh]	Infigen/lb erdrola	kWh
<b>Plant Accelerator</b>	Waite Road Urrbrae South Australia 5064	Plant Accelerator Tri- Generation - Electricity Produced ONLY			
<b>Plant Genomics</b>	Waite Road Urrbrae South Australia 5064	2002108641	Electricity:Grid- connected:SA:[kWh]	Infigen/lb erdrola	kWh
<b>Refectory</b>	North Terrace Adelaide South Australia 5005	2002228969	Electricity:Grid- connected:SA:[kWh]	Infigen/lb erdrola	kWh
<b>Roseworthy Campus - House 19</b>	Roseworthy Campus House 19 Roseworthy South Australia 5371	2001392015	Electricity:Grid- connected:SA:[kWh]	Origin Energy	kWh
<b>Roseworthy Campus - House 26</b>	Roseworthy Campus House 26 Roseworthy South Australia 5371	2001392019	Electricity:Grid- connected:SA:[kWh]	Origin Energy	kWh
<b>Roseworthy Campus - Non-Specific</b>	Roseworthy Campus The University of Adelaide Roseworthy South Australia 5371	2001392344	Electricity:Grid- connected:SA:[kWh]	Origin Energy	kWh
<b>Roseworthy Campus - Non-Specific</b>	Roseworthy Campus The University of Adelaide Roseworthy South Australia 5371	2001758840	Electricity:Grid- connected:SA:[kWh]	Origin Energy	kWh
<b>Roseworthy Campus - Non-Specific</b>	Roseworthy Campus The University of Adelaide Roseworthy South Australia 5371	2001783086	Electricity:Grid- connected:SA:[kWh]	Origin Energy	kWh
<b>Roseworthy Campus - Non-Specific</b>	Roseworthy Campus The University of Adelaide Roseworthy South Australia 5371	2001783088	Electricity:Grid- connected:SA:[kWh]	Origin Energy	kWh
<b>Roseworthy Campus - Non-Specific</b>	Roseworthy Campus The University of Adelaide Roseworthy South Australia 5371	SAAAAAB068	Electricity:Grid- connected:SA:[kWh]	Origin Energy	kWh
<b>Roseworthy Campus - Non-Specific</b>	Roseworthy Campus The University of Adelaide Roseworthy South Australia 5371	2001392008	Electricity:Grid- connected:SA:[kWh]	Origin Energy	kWh
<b>Roseworthy Campus - Non-Specific</b>	Roseworthy Campus The University of Adelaide Roseworthy South Australia 5371	2001392006	Electricity:Grid- connected:SA:[kWh]	Origin Energy	kWh

<b>Roseworthy Campus - Non-Specific</b>	Roseworthy Campus The University of Adelaide Roseworthy South Australia 5371	2001392010	Electricity:Grid- connected:SA:[kWh]	Origin Energy	kWh
<b>Roseworthy Campus - Non-Specific</b>	Roseworthy Campus The University of Adelaide Roseworthy South Australia 5371	2001392016	Electricity:Grid- connected:SA:[kWh]	Origin Energy	kWh
<b>Roseworthy Campus - Non-Specific</b>	Roseworthy Campus The University of Adelaide Roseworthy South Australia 5371	SAAAAAB058	Electricity:Grid- connected:SA:[kWh]	Origin Energy	kWh
<b>Roseworthy Campus - Non-Specific</b>	Roseworthy Campus The University of Adelaide Roseworthy South Australia 5371	SAAAAAB064	Electricity:Grid- connected:SA:[kWh]	Origin Energy	kWh
<b>Roseworthy Campus - Non-Specific</b>	Roseworthy Campus The University of Adelaide Roseworthy South Australia 5371	2001392011	Electricity:Grid- connected:SA:[kWh]	Origin Energy	kWh
<b>Roseworthy Campus - Non-Specific</b>	Roseworthy Campus The University of Adelaide Roseworthy South Australia 5371	UofA_RW_Renewable Energy_College Hall Solar	Electricity:Grid- connected:[kWh]	Not specified	kWh
<b>Roseworthy Campus - Non-Specific</b>	Roseworthy Campus The University of Adelaide Roseworthy South Australia 5371	Roseworthy Solar Farm	Electricity:Grid- connected:SA:[kWh]	Not specified	kWh
<b>Roseworthy Campus - North Area</b>	Roseworthy Campus The University of Adelaide Roseworthy South Australia 5371	SAAAAAB060	Electricity:Grid- connected:SA:[kWh]	Infigen/lb erdrola	kWh
<b>Roseworthy Campus - Services</b>	Roseworthy Campus The University of Adelaide Roseworthy South Australia 5371	SAAAAAB062	Electricity:Grid- connected:SA:[kWh]	Infigen/lb erdrola	kWh
<b>Rundle Mall Plaza - Level 3</b>	Rundle Mall Plaza Level 3 and 4 Adelaide South Australia 5000	2001734237	Electricity:Grid- connected:SA:[kWh]	Infigen/lb erdrola	kWh
<b>Rundle Mall Plaza - Level 4</b>	Rundle Mall Plaza Adelaide SA 5000	2001734238	Electricity:Grid- connected:SA:[kWh]	Infigen/lb erdrola	kWh
<b>Rundle Mall Plaza, 44 RUNDLE MALL, ADELAIDE SA 5000,</b>	Rundle Mall Plaza, 44 RUNDLE MALL, ADELAIDE SA 5000,	2001734240	Electricity:Grid- connected:SA:[kWh]	Infigen/lb erdrola	kWh
<b>Rural Health - Non-Specific</b>	Rural Health Adelaide South Australia 5000	2002185086	Electricity:Grid- connected:SA:[kWh]	Origin Energy	kWh
<b>Santos</b>	North Terrace Adelaide South Australia 5005	2001000738	Electricity:Grid- connected:SA:[kWh]	Infigen/lb erdrola	kWh
<b>Schultz</b>	North Terrace Adelaide South Australia 5005	SAAAAAA411	Electricity:Grid- connected:SA:[kWh]	Infigen/lb erdrola	kWh
<b>Student Accommodation - Non-Specific</b>	The University of Adelaide	2002213826	Electricity:Grid- connected:SA:[kWh]	Origin Energy	kWh

	Adelaide South Australia 5000				
<b>U 3 6 LAWRIE ST TUMBY BAY SA 5605</b>	U 3 6 LAWRIE ST TUMBY BAY SA 5605	2002113292	Electricity:Grid-connected:SA:[kWh]	Origin Energy	kWh
<b>U 6 61 WALKERVILLE TCE GILBERTON</b>	U 6 61 WALKERVILLE TCE GILBERTON	2001096387	Electricity:Grid-connected:SA:[kWh]	Origin Energy	kWh
<b>U13/84 Barry Street</b>	U13/84 Barry Street Port Augusta South Australia 5700	2002252294	Electricity:Grid-connected:SA:[kWh]	Origin Energy	kWh
<b>U14/84 Barry Street</b>	U14/84 Barry Street Port Augusta South Australia 5700	2002252297	Electricity:Grid-connected:SA:[kWh]	Origin Energy	kWh
<b>U15/84 Barry Street</b>	U15/84 Barry Street Port Augusta South Australia 5700	2002252522	Electricity:Grid-connected:SA:[kWh]	Origin Energy	kWh
<b>U16/84 Barry Street</b>	U16/84 Barry Street Port Augusta South Australia 5700	2002252523	Electricity:Grid-connected:SA:[kWh]	Origin Energy	kWh
<b>U17/84 Barry Street</b>	U17/84 Barry Street Port Augusta South Australia 5700	2002252524	Electricity:Grid-connected:SA:[kWh]	Origin Energy	kWh
<b>U18/84 Barry Street</b>	U18/84 Barry Street Port Augusta South Australia 5700	2002252526	Electricity:Grid-connected:SA:[kWh]	Origin Energy	kWh
<b>Unihealth Playford GP Superclinic</b>	The University of Adelaide Adelaide SA 5005	UofA_UH_Playford_Elec	Electricity:Grid-connected:[kWh]	Not specified	kWh
<b>Vet School</b>	Roseworthy Campus The University of Adelaide Roseworthy South Australia 5371	2002217439	Electricity:Grid-connected:SA:[kWh]	Infigen/lb erdrola	kWh
<b>Vet School</b>	Roseworthy Campus The University of Adelaide Roseworthy South Australia 5371	UofA_RW_Renewable Energy_Vet School	Electricity:Grid-connected:[kWh]	Not specified	kWh
<b>Waite Building</b>	Waite Road Urrbrae South Australia 5064	SAAAAAA364	Electricity:Grid-connected:SA:[kWh]	Infigen/lb erdrola	kWh
<b>Waite Campus - Library</b>	Waite Road Urrbrae South Australia 5064	SAAAAAA370	Electricity:Grid-connected:SA:[kWh]	Infigen/lb erdrola	kWh
<b>Waite Campus - Non-Specific</b>	Waite Road Urrbrae South Australia 5064	2001006384	Electricity:Grid-connected:SA:[kWh]	Origin Energy	kWh
<b>Waite Campus - Non-Specific</b>	Waite Road Urrbrae South Australia 5064	2001753429	Electricity:Grid-connected:SA:[kWh]	Origin Energy	kWh
<b>Waite Campus - Non-Specific</b>	Waite Road Urrbrae South Australia 5064	2001758677	Electricity:Grid-connected:SA:[kWh]	Origin Energy	kWh
<b>Waite Campus - Non-Specific</b>	Waite Road Urrbrae South Australia 5064	2001758678	Electricity:Grid-connected:SA:[kWh]	Origin Energy	kWh
<b>Waite Campus - Non-Specific</b>	Waite Road Urrbrae South Australia 5064	SAAAAAA366	Electricity:Grid-connected:SA:[kWh]	Origin Energy	kWh
<b>Waite Campus - Non-Specific</b>	Waite Road Urrbrae South Australia 5064	2002330553	Electricity:Grid-connected:SA:[kWh]	Infigen/lb erdrola	kWh

<b>Waite Campus - Non-Specific</b>	Waite Road Urrbrae South Australia 5064	UofA_WT_Renewable Energy_Charles Hawker Solar	Electricity:Grid- connected:[kWh]	Not specified	kWh
<b>Waite Campus - Refectory</b>	Waite Road Urrbrae South Australia 5064	SAAAAAA373	Electricity:Grid- connected:SA:[kWh]	Infigen/lb erdrola	kWh
<b>West Beach Sports Grounds</b>	652 Burbridge Road West Beach South Australia 5024	2001238350	Electricity:Grid- connected:SA:[kWh]	Origin Energy	kWh
<b>West Beach Sports Grounds</b>	652 Burbridge Road West Beach South Australia 5024	2001238366	Electricity:Grid- connected:SA:[kWh]	Origin Energy	kWh
<b>Wine Innovation Centre</b>	Waite Road Urrbrae South Australia 5064	2002192414	Electricity:Grid- connected:SA:[kWh]	Infigen/lb erdrola	kWh
<b>Wine Innovation Centre</b>	Waite Road Urrbrae South Australia 5064	UofA_WT_Renewable Energy_Wine Innovation Solar	Electricity:Grid- connected:[kWh]	Not specified	kWh
<b>Wine Science</b>	Waite Road Urrbrae South Australia 5064	SAAAAAA372	Electricity:Grid- connected:SA:[kWh]	Infigen/lb erdrola	kWh
<b>Women's Health Centre, Lot 14North Tce, ADELAIDE, SA, 5001</b>	Women'S Health Centre, Lot 14North Tce, ADELAIDE, SA, 5001	2002354097	Electricity:Grid- connected:SA:[kWh]	Infigen/lb erdrola	kWh
<b>8008270000 UNMETERED ROSEWORTHY SA 5371</b>	8008270000 UNMETERED ROSEWORTHY SA 5371	6005 5308	Electricity:Unmetere d-Supply:[Units]	AGL	Units
<b>8008270000 UNMETERED ROSEWORTHY SA 5371</b>	8008270000 UNMETERED ROSEWORTHY SA 5371	2001809252	Electricity:Unmetere d-Supply:[Units]	AGL	Units
<b>CNR WAR MEMORIAL DRIVEWAY - Frome Road ADELAIDE</b>	CNR WAR MEMORIAL DRIVEWAY - Frome Road ADELAIDE	5675 6026	Electricity:Unmetere d-Supply:[Units]	AGL	Units
<b>10 Mackinnon Parade</b>	10 Mackinnon Parade North Adelaide South Australia 5006	5510691141	NaturalGas:NatGasP iped:SA:[MJ]	AGL	MJ
<b>10 Mackinnon Parade</b>	10 Mackinnon Parade North Adelaide South Australia 5006	5510691141	NaturalGas:NatGasP iped:SA:[MJ]	EnergyAu stralia	MJ
<b>10 Pulteney St</b>	North Terrace Adelaide South Australia 5005	5510482590	NaturalGas:NatGasP iped:SA:[MJ]	EnergyAu stralia	MJ
<b>2/7 Albert Street</b>	2/7 Albert Street Dulwich South Australia 5065	5510513140	NaturalGas:NatGasP iped:SA:[MJ]	AGL	MJ
<b>2/7 Albert Street</b>	2/7 Albert Street Dulwich South Australia 5065	5510513140	NaturalGas:NatGasP iped:SA:[MJ]	EnergyAu stralia	MJ
<b>210 Grote Street - The Village</b>	210 Grote Street Adelaide SA 5000	5510591655	NaturalGas:NatGasP iped:SA:[MJ]	AGL	MJ
<b>210 Grote Street - The Village</b>	210 Grote Street Adelaide SA 5000	5510591655	NaturalGas:NatGasP iped:SA:[MJ]	EnergyAu stralia	MJ
<b>35 Stirling Street</b>	35 Stirling Street Thebarton SA 5031	5510225475	NaturalGas:NatGasP iped:SA:[MJ]	AGL	MJ
<b>35 Stirling Street</b>	35 Stirling Street Thebarton SA 5031	5510225475	NaturalGas:NatGasP iped:SA:[MJ]	EnergyAu stralia	MJ
<b>97 Drayton Street</b>	97 Drayton Street Bowden South Australia 5007	5510485790	NaturalGas:NatGasP iped:SA:[MJ]	AGL	MJ

<b>97 Drayton Street</b>	97 Drayton Street Bowden South Australia 5007	5510485790	NaturalGas:NatGasP iped:SA:[MJ]	EnergyAu stralia	MJ
<b>97 Drayton Street</b>	97 Drayton Street Bowden South Australia 5007	5510485791	NaturalGas:NatGasP iped:SA:[MJ]	AGL	MJ
<b>97 Drayton Street</b>	97 Drayton Street Bowden South Australia 5007	5510485791	NaturalGas:NatGasP iped:SA:[MJ]	EnergyAu stralia	MJ
<b>Adelaide Parklands</b>	War Memorial Drive Adelaide Parklands Adelaide South Australia 5006	5510525012	NaturalGas:NatGasP iped:SA:[MJ]	AGL	MJ
<b>Adelaide Parklands</b>	War Memorial Drive Adelaide Parklands Adelaide South Australia 5006	5510525012	NaturalGas:NatGasP iped:SA:[MJ]	EnergyAu stralia	MJ
<b>Adelaide Parklands</b>	War Memorial Drive Adelaide Parklands Adelaide South Australia 5006	5510525169	NaturalGas:NatGasP iped:SA:[MJ]	AGL	MJ
<b>Adelaide Parklands</b>	War Memorial Drive Adelaide Parklands Adelaide South Australia 5006	5510525169	NaturalGas:NatGasP iped:SA:[MJ]	EnergyAu stralia	MJ
<b>Adelaide Parklands</b>	War Memorial Drive Adelaide Parklands Adelaide South Australia 5006	5510572571	NaturalGas:NatGasP iped:SA:[MJ]	AGL	MJ
<b>Adelaide Parklands</b>	War Memorial Drive Adelaide Parklands Adelaide South Australia 5006	5510572571	NaturalGas:NatGasP iped:SA:[MJ]	EnergyAu stralia	MJ
<b>Ag Research Institute</b>	Waite Road Urrbrae South Australia 5064	5510485150	NaturalGas:NatGasP iped:SA:[MJ]	AGL	MJ
<b>Ag Research Institute</b>	Waite Road Urrbrae South Australia 5064	5510485150	NaturalGas:NatGasP iped:SA:[MJ]	EnergyAu stralia	MJ
<b>AHMS</b>	100 North Terrace Adelaide South Australia 5000	5510709497	NaturalGas:NatGasP iped:SA:[MJ]	Weston Energy	MJ
<b>Biotech Facility</b>	Waite Road Urrbrae South Australia 5064	5510571946	NaturalGas:NatGasP iped:SA:[MJ]	AGL	MJ
<b>Biotech Facility</b>	Waite Road Urrbrae South Australia 5064	5510571946	NaturalGas:NatGasP iped:SA:[MJ]	EnergyAu stralia	MJ
<b>CNR WAR MEMORIAL DRIVEWAY - Frome Road ADELAIDE</b>	CNR WAR MEMORIAL DRIVEWAY - Frome Road ADELAIDE	5510562608	NaturalGas:NatGasP iped:SA:[MJ]	AGL	MJ
<b>CNR WAR MEMORIAL DRIVEWAY - Frome Road ADELAIDE</b>	CNR WAR MEMORIAL DRIVEWAY - Frome Road ADELAIDE	5510562608	NaturalGas:NatGasP iped:SA:[MJ]	EnergyAu stralia	MJ
<b>Frome Rd</b>	North Terrace Adelaide South Australia 5005	5510484859	NaturalGas:NatGasP iped:SA:[MJ]	Weston Energy	MJ
<b>Frome Rd</b>	North Terrace Adelaide South Australia 5005	5510497388	NaturalGas:NatGasP iped:SA:[MJ]	EnergyAu stralia	MJ
<b>Frome Rd - Geology</b>	North Terrace Adelaide South Australia 5005	5510497129	NaturalGas:NatGasP iped:SA:[MJ]	AGL	MJ

<b>Frome Rd - Geology</b>	North Terrace Adelaide South Australia 5005	5510497129	NaturalGas:NatGasP iped:SA:[MJ]	EnergyAu stralia	MJ
<b>Frome Rd - Science Building</b>	North Terrace Adelaide South Australia 5005	5510559016	NaturalGas:NatGasP iped:SA:[MJ]	EnergyAu stralia	MJ
<b>Inggarni Wardli</b>	North Terrace Adelaide South Australia 5005	5510253717	NaturalGas:NatGasP iped:SA:[MJ]	AGL	MJ
<b>Inggarni Wardli</b>	North Terrace Adelaide South Australia 5005	5510253717	NaturalGas:NatGasP iped:SA:[MJ]	EnergyAu stralia	MJ
<b>Medical School</b>	Frome Road Adelaide South Australia 5005	5510497130	NaturalGas:NatGasP iped:SA:[MJ]	AGL	MJ
<b>Medical School</b>	Frome Road Adelaide South Australia 5005	5510497130	NaturalGas:NatGasP iped:SA:[MJ]	EnergyAu stralia	MJ
<b>Medical School</b>	Frome Road Adelaide South Australia 5005	5510686592	NaturalGas:NatGasP iped:SA:[MJ]	EnergyAu stralia	MJ
<b>National Wine Centre</b>	Cnr Botanic and Hackney Road Adelaide South Australia 5000	NWC_Natural Gas	NaturalGas:NatGasP iped:SA:[MJ]	Origin Energy	MJ
<b>Plant Accelerator</b>	Waite Road Urrbrae South Australia 5064	5510646586	NaturalGas:NatGasP iped:SA:[MJ]	EnergyAu stralia	MJ
<b>Refectory</b>	North Terrace Adelaide South Australia 5005	5510497657	NaturalGas:NatGasP iped:SA:[MJ]	EnergyAu stralia	MJ
<b>Research Oval</b>	Waite Road Urrbrae South Australia 5064	5510511182	NaturalGas:NatGasP iped:SA:[MJ]	AGL	MJ
<b>Research Oval</b>	Waite Road Urrbrae South Australia 5064	5510511182	NaturalGas:NatGasP iped:SA:[MJ]	EnergyAu stralia	MJ
<b>Unit 1e, 16-20 Finniss Street</b>	Unit 1e, 16-20 Finniss Street North Adelaide South Australia 5006	5510553585	NaturalGas:NatGasP iped:SA:[MJ]	AGL	MJ
<b>Unit 1e, 16-20 Finniss Street</b>	Unit 1e, 16-20 Finniss Street North Adelaide South Australia 5006	5510553585	NaturalGas:NatGasP iped:SA:[MJ]	EnergyAu stralia	MJ
<b>Unit 2e, 16-20 Finniss Street</b>	Unit 2e, 16-20 Finniss Street North Adelaide South Australia 5006	5510553586	NaturalGas:NatGasP iped:SA:[MJ]	AGL	MJ
<b>Unit 2e, 16-20 Finniss Street</b>	Unit 2e, 16-20 Finniss Street North Adelaide South Australia 5006	5510553586	NaturalGas:NatGasP iped:SA:[MJ]	EnergyAu stralia	MJ
<b>Unit 3e, 16-20 Finniss Street</b>	Unit 3e, 16-20 Finniss Street North Adelaide South Australia 5006	5510553587	NaturalGas:NatGasP iped:SA:[MJ]	AGL	MJ
<b>Unit 3e, 16-20 Finniss Street</b>	Unit 3e, 16-20 Finniss Street North Adelaide South Australia 5006	5510553587	NaturalGas:NatGasP iped:SA:[MJ]	EnergyAu stralia	MJ
<b>Unit 4e, 16-20 Finniss Street</b>	Unit 4e, 16-20 Finniss Street	5510553588	NaturalGas:NatGasP iped:SA:[MJ]	AGL	MJ

	North Adelaide South Australia 5006				
<b>Unit 4e, 16-20 Finniss Street</b>	Unit 4e, 16-20 Finniss Street North Adelaide South Australia 5006	5510553588	NaturalGas:NatGasP iped:SA:[MJ]	EnergyAu stralia	MJ
<b>Unit 5e, 16-20 Finniss Street</b>	Unit 5e, 16-20 Finniss Street North Adelaide South Australia 5006	5510553589	NaturalGas:NatGasP iped:SA:[MJ]	AGL	MJ
<b>Unit 5e, 16-20 Finniss Street</b>	Unit 5e, 16-20 Finniss Street North Adelaide South Australia 5006	5510553589	NaturalGas:NatGasP iped:SA:[MJ]	EnergyAu stralia	MJ
<b>Unit 6e, 16-20 Finniss Street</b>	Unit 6e, 16-20 Finniss Street North Adelaide South Australia 5006	5510553590	NaturalGas:NatGasP iped:SA:[MJ]	AGL	MJ
<b>Unit 6e, 16-20 Finniss Street</b>	Unit 6e, 16-20 Finniss Street North Adelaide South Australia 5006	5510553590	NaturalGas:NatGasP iped:SA:[MJ]	EnergyAu stralia	MJ
<b>Victoria Drive - Benham Laboratories</b>	North Terrace Adelaide South Australia 5005	5510497654	NaturalGas:NatGasP iped:SA:[MJ]	AGL	MJ
<b>Victoria Drive - Benham Laboratories</b>	North Terrace Adelaide South Australia 5005	5510497654	NaturalGas:NatGasP iped:SA:[MJ]	EnergyAu stralia	MJ
<b>Victoria Drive - Johnson Glass Blowing</b>	North Terrace Adelaide South Australia 5005	5510497655	NaturalGas:NatGasP iped:SA:[MJ]	AGL	MJ
<b>Victoria Drive - Johnson Glass Blowing</b>	North Terrace Adelaide South Australia 5005	5510497655	NaturalGas:NatGasP iped:SA:[MJ]	EnergyAu stralia	MJ
<b>Waite Campus - Non-Specific</b>	Waite Road Urrbrae South Australia 5064	5510511215	NaturalGas:NatGasP iped:SA:[MJ]	AGL	MJ
<b>Waite Campus - Non-Specific</b>	Waite Road Urrbrae South Australia 5064	5510511215	NaturalGas:NatGasP iped:SA:[MJ]	EnergyAu stralia	MJ
<b>Waite Campus - Non-Specific</b>	Waite Road Urrbrae South Australia 5064	5510512573	NaturalGas:NatGasP iped:SA:[MJ]	AGL	MJ
<b>Waite Campus - Non-Specific</b>	Waite Road Urrbrae South Australia 5064	5510512573	NaturalGas:NatGasP iped:SA:[MJ]	EnergyAu stralia	MJ
<b>Waite Institute</b>	Waite Road Urrbrae South Australia 5064	5510511217	NaturalGas:NatGasP iped:SA:[MJ]	AGL	MJ
<b>Waite Institute</b>	Waite Road Urrbrae South Australia 5064	5510511217	NaturalGas:NatGasP iped:SA:[MJ]	EnergyAu stralia	MJ
<b>West Beach Sports Grounds</b>	652 Burbridge Road West Beach South Australia 5024	5510494745	NaturalGas:NatGasP iped:SA:[MJ]	AGL	MJ
<b>West Beach Sports Grounds</b>	652 Burbridge Road West Beach South Australia 5024	5510494745	NaturalGas:NatGasP iped:SA:[MJ]	EnergyAu stralia	MJ
<b>Wine Innovation Centre</b>	Waite Road Urrbrae South Australia 5064	5510634785	NaturalGas:NatGasP iped:SA:[MJ]	EnergyAu stralia	MJ

<b>North Terrace Campus - Non-Specific</b>	North Terrace Adelaide South Australia 5005	UniAdel:Construction			
<b>10 Pulteney St</b>	North Terrace Adelaide South Australia 5005	50077786	WasteRecyc:Green-Garden:[tonne]	Veolia	tonnes
<b>10 Pulteney St</b>	North Terrace Adelaide South Australia 5005	50077786	WasteRecyc:Paper:[tonne]	Veolia	tonnes
<b>10 Pulteney St</b>	North Terrace Adelaide South Australia 5005	50077786	WasteRecyc:Mixed:[tonne]	Veolia	tonnes
<b>10 Pulteney St</b>	North Terrace Adelaide South Australia 5005	50077786	WasteRecyc:Charge Only:[blank]	Veolia	blank
<b>10 Pulteney St</b>	North Terrace Adelaide South Australia 5005	50077847	WasteRecyc:Paper:[tonne]	Veolia	tonnes
<b>210 Grote Street - The Village</b>	210 Grote Street Adelaide SA 5000	50082699	WasteRecyc:Mixed:[tonne]	Veolia	tonnes
<b>210 Grote Street - The Village</b>	210 Grote Street Adelaide SA 5000	50082699	WasteRecyc:Charge Only:[blank]	Veolia	blank
<b>AHMS</b>	100 North Terrace Adelaide South Australia 5000	50077849	WasteRecyc:Green-Garden:[tonne]	Veolia	tonnes
<b>AHMS</b>	100 North Terrace Adelaide South Australia 5000	50077849	WasteRecyc:Paper:[tonne]	Veolia	tonnes
<b>AHMS</b>	100 North Terrace Adelaide South Australia 5000	50077849	WasteRecyc:Mixed:[tonne]	Veolia	tonnes
<b>AHMS</b>	100 North Terrace Adelaide South Australia 5000	50077849	WasteRecyc:Charge Only:[blank]	Veolia	blank
<b>AHMS</b>	100 North Terrace Adelaide South Australia 5000	50077860	WasteRecyc:Paper:[tonne]	Veolia	tonnes
<b>Level 12 Schulz Building, ADELAIDE SA 5005</b>	Level 12 Schulz Building, ADELAIDE SA 5005	50077667	WasteRecyc:Mixed:[tonne]	Veolia	tonnes
<b>Level 12 Schulz Building, ADELAIDE SA 5005</b>	Level 12 Schulz Building, ADELAIDE SA 5005	50077667	WasteRecyc:Charge Only:[blank]	Veolia	blank
<b>National Wine Centre</b>	Cnr Botanic and Hackney Road Adelaide South Australia 5000	OzHarvest Food			
<b>National Wine Centre</b>	Cnr Botanic and Hackney Road Adelaide South Australia 5000	50077668	WasteRecyc:Green-Garden:[tonne]	Veolia	tonnes
<b>National Wine Centre</b>	Cnr Botanic and Hackney Road Adelaide South Australia 5000	50077668	WasteRecyc:Paper:[tonne]	Veolia	tonnes
<b>National Wine Centre</b>	Cnr Botanic and Hackney Road Adelaide South Australia 5000	50077668	WasteRecyc:Paper:[m3]	Veolia	m3
<b>National Wine Centre</b>	Cnr Botanic and Hackney Road Adelaide South Australia 5000	50077668	WasteRecyc:Charge Only:[blank]	Veolia	blank

National Wine Centre	Cnr Botanic and Hackney Road Adelaide South Australia 5000	50077845	WasteRecyc:Paper:[tonne]	Veolia	tonnes
National Wine Centre	Cnr Botanic and Hackney Road Adelaide South Australia 5000	50077845	WasteRecyc:Mixed:[tonne]	Veolia	tonnes
National Wine Centre	Cnr Botanic and Hackney Road Adelaide South Australia 5000	50077845	WasteRecyc:Charge Only:[blank]	Veolia	blank
North Terrace Campus - Non-Specific	North Terrace Adelaide South Australia 5005	50048518		Veolia	
North Terrace Campus - Non-Specific	North Terrace Adelaide South Australia 5005	50048532		Veolia	
North Terrace Campus - Non-Specific	North Terrace Adelaide South Australia 5005	50048533		Veolia	
North Terrace Campus - Non-Specific	North Terrace Adelaide South Australia 5005	50053327		Veolia	
North Terrace Campus - Non-Specific	North Terrace Adelaide South Australia 5005	50069278		Veolia	
North Terrace Campus - Non-Specific	North Terrace Adelaide South Australia 5005	Oz Harvest - Food Reuse			
North Terrace Campus - Non-Specific	North Terrace Adelaide South Australia 5005	50077843	WasteRecyc:Paper:[tonne]	Veolia	tonnes
North Terrace Campus - Non-Specific	North Terrace Adelaide South Australia 5005	50077843	WasteRecyc:Mixed:[tonne]	Veolia	tonnes
North Terrace Campus - Non-Specific	North Terrace Adelaide South Australia 5005	50077843	WasteRecyc:Charge Only:[blank]	Veolia	blank
North Terrace Campus - Non-Specific	North Terrace Adelaide South Australia 5005	50077843	WasteToLandfill:ChargeOnly:[blank]	Veolia	blank
North Terrace Campus - Non-Specific	North Terrace Adelaide South Australia 5005	50077843	WasteRecyc:E-Waste:[L]	Veolia	L
North Terrace Campus - Non-Specific	North Terrace Adelaide South Australia 5005	50077784	WasteRecyc:Green-Garden:[tonne]	Veolia	tonnes
North Terrace Campus - Non-Specific	North Terrace Adelaide South Australia 5005	50077784	WasteRecyc:Paper:[tonne]	Veolia	tonnes
North Terrace Campus - Non-Specific	North Terrace Adelaide South Australia 5005	50077784	WasteRecyc:Paper:[m3]	Veolia	m3
North Terrace Campus - Non-Specific	North Terrace Adelaide South Australia 5005	50077784	WasteRecyc:Green-Garden:[m3]	Veolia	m3
North Terrace Campus - Non-Specific	North Terrace Adelaide South Australia 5005	50077784	WasteRecyc:Mixed:[tonne]	Veolia	tonnes
North Terrace Campus - Non-Specific	North Terrace Adelaide South Australia 5005	50077784	WasteRecyc:Charge Only:[blank]	Veolia	blank

<b>North Terrace Campus - Non-Specific</b>	North Terrace Adelaide South Australia 5005	50077784	WasteToLandfill:ChargeOnly:[blank]	Veolia	blank
<b>North Terrace Campus, ADELAIDE SA 5000</b>	North Terrace Campus, ADELAIDE SA 5000	50081450	WasteRecyc:ChargeOnly:[blank]	Veolia	blank
<b>Roseworthy Campus - Non-Specific</b>	Roseworthy Campus The University of Adelaide Roseworthy South Australia 5371	UofA_RC_Batteries			
<b>Roseworthy Campus - Non-Specific</b>	Roseworthy Campus The University of Adelaide Roseworthy South Australia 5371	50048510		Veolia	
<b>Roseworthy Campus - Non-Specific</b>	Roseworthy Campus The University of Adelaide Roseworthy South Australia 5371	50055831		Veolia	
<b>Roseworthy Campus - Non-Specific</b>	Roseworthy Campus The University of Adelaide Roseworthy South Australia 5371	UofA_RW_E-Waste			
<b>Roseworthy Campus - Non-Specific</b>	Roseworthy Campus The University of Adelaide Roseworthy South Australia 5371	UofA_RW_College Hall BioBin	WasteRecyc:Green-Garden:[tonne]	Not specified	tonnes
<b>Roseworthy Campus - Non-Specific</b>	Roseworthy Campus The University of Adelaide Roseworthy South Australia 5371	50077844	WasteRecyc:Paper:[tonne]	Veolia	tonnes
<b>Roseworthy Campus - Non-Specific</b>	Roseworthy Campus The University of Adelaide Roseworthy South Australia 5371	50077844	WasteRecyc:ChargeOnly:[blank]	Veolia	blank
<b>Roseworthy Campus - Non-Specific</b>	Roseworthy Campus The University of Adelaide Roseworthy South Australia 5371	50077844	WasteToLandfill:ChargeOnly:[blank]	Veolia	blank
<b>Roseworthy Campus - Non-Specific</b>	Roseworthy Campus The University of Adelaide Roseworthy South Australia 5371	50077782	WasteRecyc:Green-Garden:[tonne]	Veolia	tonnes
<b>Roseworthy Campus - Non-Specific</b>	Roseworthy Campus The University of Adelaide Roseworthy South Australia 5371	50077782	WasteRecyc:Paper:[m3]	Veolia	m3
<b>Roseworthy Campus - Non-Specific</b>	Roseworthy Campus The University of Adelaide Roseworthy South Australia 5371	50077782	WasteRecyc:Mixed:[tonne]	Veolia	tonnes
<b>Roseworthy Campus - Non-Specific</b>	Roseworthy Campus The University of Adelaide Roseworthy South Australia 5371	50077782	WasteRecyc:ChargeOnly:[blank]	Veolia	blank

<b>Roseworthy Campus - Non-Specific</b>	Roseworthy Campus The University of Adelaide Roseworthy South Australia 5371	50077782	WasteToLandfill:ChargeOnly:[blank]	Veolia	blank
<b>Thebarton Campus - Non-specific</b>	35-37 Strling Street Thebarton South Australia 5031	50078352	WasteRecyc:Paper:[tonne]	Veolia	tonnes
<b>Vet School</b>	Roseworthy Campus The University of Adelaide Roseworthy South Australia 5371	UofA_RWVet_Recycling			
<b>Waite Campus - Non-Specific</b>	Waite Road Urrbrae South Australia 5064	50048485		Veolia	
<b>Waite Campus - Non-Specific</b>	Waite Road Urrbrae South Australia 5064	50048571		Veolia	
<b>Waite Campus - Non-Specific</b>	Waite Road Urrbrae South Australia 5064	UofA_WC_E-Waste			
<b>Waite Campus - Non-Specific</b>	Waite Road Urrbrae South Australia 5064	50062962		Veolia	
<b>Waite Campus - Non-Specific</b>	Waite Road Urrbrae South Australia 5064	50077846	WasteRecyc:Paper:[tonne]	Veolia	tonnes
<b>Waite Campus - Non-Specific</b>	Waite Road Urrbrae South Australia 5064	50077846	WasteRecyc:ChargeOnly:[blank]	Veolia	blank
<b>Waite Campus - Non-Specific</b>	Waite Road Urrbrae South Australia 5064	50077846	WasteToLandfill:ChargeOnly:[blank]	Veolia	blank
<b>Waite Campus - Non-Specific</b>	Waite Road Urrbrae South Australia 5064	50077846	WasteRecyc:E-Waste:[L]	Veolia	L
<b>Waite Campus - Non-Specific</b>	Waite Road Urrbrae South Australia 5064	50077783	WasteRecyc:Green-Garden:[tonne]	Veolia	tonnes
<b>Waite Campus - Non-Specific</b>	Waite Road Urrbrae South Australia 5064	50077783	WasteRecyc:Paper:[tonne]	Veolia	tonnes
<b>Waite Campus - Non-Specific</b>	Waite Road Urrbrae South Australia 5064	50077783	WasteRecyc:Paper:[m3]	Veolia	m3
<b>Waite Campus - Non-Specific</b>	Waite Road Urrbrae South Australia 5064	50077783	WasteRecyc:Mixed:[tonne]	Veolia	tonnes
<b>Waite Campus - Non-Specific</b>	Waite Road Urrbrae South Australia 5064	50077783	WasteRecyc:ChargeOnly:[blank]	Veolia	blank
<b>Waite Campus - Non-Specific</b>	Waite Road Urrbrae South Australia 5064	50077783	WasteRecyc:Mixed:[m3]	Veolia	m3
<b>AHMS</b>	100 North Terrace Adelaide South Australia 5000	UofA_AHMS_Refrigerants	RefrigAircon:R-22:[kg charge load]	Not specified	kg charge load
<b>AHMS</b>	100 North Terrace Adelaide South Australia 5000	UofA_AHMS_Refrigerants	RefrigAircon:R-404A:[kg charge load]	Not specified	kg charge load

<b>AHMS</b>	100 North Terrace Adelaide South Australia 5000	UofA_AHMS_Refrigerants	RefrigAircon:R-134a:[kg charge load]	Not specified	kg charge load
<b>National Wine Centre</b>	Cnr Botanic and Hackney Road Adelaide South Australia 5000	UofA_NWC_Refrigerants	RefrigAircon:R-404A:[kg charge load]	Not specified	kg charge load
<b>National Wine Centre</b>	Cnr Botanic and Hackney Road Adelaide South Australia 5000	UofA_NWC_Refrigerants	RefrigAircon:R-134a:[kg charge load]	Not specified	kg charge load
<b>North Terrace Campus - Non-Specific</b>	North Terrace Adelaide South Australia 5005	UofA_NTC_Refrigerants	RefrigAircon:R-410A:[kg charge load]	Not specified	kg charge load
<b>North Terrace Campus - Non-Specific</b>	North Terrace Adelaide South Australia 5005	Refrigerant_R22	RefrigAircon:R-22:[kg charge load]	Not specified	kg charge load
<b>North Terrace Campus - Non-Specific</b>	North Terrace Adelaide South Australia 5005	Refrigerant_134a	RefrigAircon:R-134a:[kg charge load]	Not specified	kg charge load
<b>North Terrace Campus - Non-Specific</b>	North Terrace Adelaide South Australia 5005	Refrigerant_407c	RefrigAircon:R-407C:[kg charge load]	Not specified	kg charge load
<b>North Terrace Campus - Non-Specific</b>	North Terrace Adelaide South Australia 5005	Refrigerant R404a	RefrigAircon:R-404A:[kg charge load]	Not specified	kg charge load
<b>North Terrace Campus - Non-Specific</b>	North Terrace Adelaide South Australia 5005	R22		Not specified	
<b>Roseworthy Campus - Non-Specific</b>	Roseworthy Campus The University of Adelaide Roseworthy South Australia 5371	UofA_RW_Refrigerants	RefrigAircon:R-22:[kg charge load]	Not specified	kg charge load
<b>Roseworthy Campus - Non-Specific</b>	Roseworthy Campus The University of Adelaide Roseworthy South Australia 5371	UofA_RW_Refrigerants	RefrigAircon:R-404A:[kg charge load]	Not specified	kg charge load
<b>Roseworthy Campus - Non-Specific</b>	Roseworthy Campus The University of Adelaide Roseworthy South Australia 5371	UofA_RW_Refrigerants	RefrigAircon:R-410A:[kg charge load]	Not specified	kg charge load
<b>Roseworthy Campus - Non-Specific</b>	Roseworthy Campus The University of Adelaide Roseworthy South Australia 5371	UofA_RW_Refrigerants	RefrigAircon:R-134a:[kg charge load]	Not specified	kg charge load
<b>Roseworthy Campus - Non-Specific</b>	Roseworthy Campus The University of Adelaide Roseworthy South Australia 5371	Roseworthy R407C			
<b>Waite Campus - Non-Specific</b>	Waite Road Urrbrae South Australia 5064	UofA_WT_Refrigerants	RefrigAircon:R-134a:[kg charge load]	Not specified	kg charge load

<b>North Terrace Campus - Non-Specific</b>	North Terrace Adelaide South Australia 5005	UniAdel:Staff Commute	Staff Commute Medium Car [km]	Client report	km
<b>North Terrace Campus - Non-Specific</b>	North Terrace Adelaide South Australia 5005	UniAdel:Staff Commute	Staff Commute Large Car [km]	Client report	km
<b>North Terrace Campus - Non-Specific</b>	North Terrace Adelaide South Australia 5005	UniAdel:Staff Commute	Staff Commute Train	Client report	pax.k m
<b>North Terrace Campus - Non-Specific</b>	North Terrace Adelaide South Australia 5005	UniAdel:Staff Commute	Staff Commute Bus	Client report	pax.k m
<b>North Terrace Campus - Non-Specific</b>	North Terrace Adelaide South Australia 5005	UniAdel:Staff Commute	Staff Commute Walk	Client report	pax.k m
<b>North Terrace Campus - Non-Specific</b>	North Terrace Adelaide South Australia 5005	UniAdel:Staff Commute	Staff Commute Bicycle	Client report	pax.k m
<b>North Terrace Campus - Non-Specific</b>	North Terrace Adelaide South Australia 5005	UniAdel:Staff Commute	Staff Commute Motorbike	Client report	pax.k m
<b>North Terrace Campus - Non-Specific</b>	North Terrace Adelaide South Australia 5005	UniAdel:Staff Commute	Staff Commute Tram	Client report	pax.k m
<b>North Terrace Campus - Non-Specific</b>	North Terrace Adelaide South Australia 5005	UniAdel:Staff Commute	Staff Commute Hybrid Small [km]	Client report	km
<b>North Terrace Campus - Non-Specific</b>	North Terrace Adelaide South Australia 5005	UniAdel:Staff Commute	Staff Commute Average Car Battery Electric [km]	Client report	km
<b>National Wine Centre</b>	Cnr Botanic and Hackney Road Adelaide South Australia 5000	UofA_NWC_Stationary_ Fuel		Not specified	
<b>North Terrace Campus - Non-Specific</b>	North Terrace Adelaide South Australia 5005	Stationary Diesel (Generators)			
<b>Roseworthy Campus - Non-Specific</b>	Roseworthy Campus The University of Adelaide Roseworthy South Australia 5371	045011030 5	StatFuel:LPG:[L]	Elgas	L
<b>Roseworthy Campus - Non-Specific</b>	Roseworthy Campus The University of Adelaide Roseworthy South Australia 5371	045028771 4	StatFuel:LPG:[L]	Elgas	L
<b>Roseworthy Campus - Non-Specific</b>	Roseworthy Campus The University of Adelaide Roseworthy South Australia 5371	Stationary Diesel (Generators) RW			
<b>Waite Campus - Non-Specific</b>	Waite Road Urrbrae South Australia 5064	UofA_WC_Stationary_ Fuel	StatFuel:Diesel:[L]	Not specified	L
<b>Centre for Automotive Safety Research</b>	57 King William Street Kent Town SA 5067	1499 8276	TransFuelPost2004: Gasoline:[L]	Motorchar ge	L
<b>Centre for Automotive Safety Research</b>	57 King William Street Kent Town SA 5067	1499 8276	TransFuelPost2004: ChargeOnly:[blank]	Motorchar ge	blank
<b>Centre for Automotive Safety Research</b>	57 King William Street Kent Town SA 5067	2452 4138	TransFuelPost2004: Gasoline:[L]	Motorchar ge	L

<b>Centre for Automotive Safety Research</b>	57 King William Street Kent Town SA 5067	2452 4138	TransFuelPost2004: ChargeOnly:[blank]	Motorcharge	blank
<b>LEVEL 3 50 RUNDLE MALLADELAIDE SA 5005</b>	THE UNIVERSITY OF ADELAIDE  LEVEL 3 50 RUNDLE MALL  ADELAIDE SA 5005	6682 2481	TransFuelPost2004: Diesel:[L]	Motorcharge	L
<b>LEVEL 3 50 RUNDLE MALLADELAIDE SA 5005</b>	THE UNIVERSITY OF ADELAIDE  LEVEL 3 50 RUNDLE MALL  ADELAIDE SA 5005	6682 2481	TransFuelPost2004: ChargeOnly:[blank]	Motorcharge	blank
<b>LEVEL 3 50 RUNDLE MALLADELAIDE SA 5005</b>	THE UNIVERSITY OF ADELAIDE  LEVEL 3 50 RUNDLE MALL  ADELAIDE SA 5005	5335 3243	TransFuelPost2004: ChargeOnly:[blank]	Motorcharge	blank
<b>LEVEL 3 50 RUNDLE MALLADELAIDE SA 5005</b>	THE UNIVERSITY OF ADELAIDE  LEVEL 3 50 RUNDLE MALL  ADELAIDE SA 5005	5898 5866	TransFuelPost2004: Diesel:[L]	Motorcharge	L
<b>LEVEL 3 50 RUNDLE MALLADELAIDE SA 5005</b>	THE UNIVERSITY OF ADELAIDE  LEVEL 3 50 RUNDLE MALL  ADELAIDE SA 5005	5898 5866	TransFuelPost2004: Gasoline:[L]	Motorcharge	L
<b>LEVEL 3 50 RUNDLE MALLADELAIDE SA 5005</b>	THE UNIVERSITY OF ADELAIDE  LEVEL 3 50 RUNDLE MALL  ADELAIDE SA 5005	5898 5866	TransFuelPost2004: ChargeOnly:[blank]	Motorcharge	blank
<b>LEVEL 3 50 RUNDLE MALLADELAIDE SA 5005</b>	THE UNIVERSITY OF ADELAIDE  LEVEL 3 50 RUNDLE MALL  ADELAIDE SA 5005	6293 7119	TransFuelPost2004: Diesel:[L]	Motorcharge	L
<b>LEVEL 3 50 RUNDLE MALLADELAIDE SA 5005</b>	THE UNIVERSITY OF ADELAIDE  LEVEL 3 50 RUNDLE MALL  ADELAIDE SA 5005	6293 7119	TransFuelPost2004: Gasoline:[L]	Motorcharge	L
<b>LEVEL 3 50 RUNDLE MALLADELAIDE SA 5005</b>	THE UNIVERSITY OF ADELAIDE  LEVEL 3 50 RUNDLE MALL  ADELAIDE SA 5005	6293 7119	TransFuelPost2004: ChargeOnly:[blank]	Motorcharge	blank
<b>LEVEL 3 50 RUNDLE MALLADELAIDE SA 5005</b>	THE UNIVERSITY OF ADELAIDE  LEVEL 3 50 RUNDLE	5912 5785	TransFuelPost2004: Gasoline:[L]	Motorcharge	L

	MALL ADELAIDE SA 5005				
<b>LEVEL 3 50 RUNDLE MALLADELAIDE SA 5005</b>	THE UNIVERSITY OF ADELAIDE  LEVEL 3 50 RUNDLE MALL  ADELAIDE SA 5005	5912 5785	TransFuelPost2004: ChargeOnly:[blank]	Motorchar ge	blank
<b>LEVEL 3 50 RUNDLE MALLADELAIDE SA 5005</b>	THE UNIVERSITY OF ADELAIDE  LEVEL 3 50 RUNDLE MALL  ADELAIDE SA 5005	5193 1792	TransFuelPost2004: Gasoline:[L]	Motorchar ge	L
<b>LEVEL 3 50 RUNDLE MALLADELAIDE SA 5005</b>	THE UNIVERSITY OF ADELAIDE  LEVEL 3 50 RUNDLE MALL  ADELAIDE SA 5005	5193 1792	TransFuelPost2004: ChargeOnly:[blank]	Motorchar ge	blank
<b>LEVEL 3 50 RUNDLE MALLADELAIDE SA 5005</b>	THE UNIVERSITY OF ADELAIDE  LEVEL 3 50 RUNDLE MALL  ADELAIDE SA 5005	6693 7099	TransFuelPost2004: Gasoline:[L]	Motorchar ge	L
<b>LEVEL 3 50 RUNDLE MALLADELAIDE SA 5005</b>	THE UNIVERSITY OF ADELAIDE  LEVEL 3 50 RUNDLE MALL  ADELAIDE SA 5005	6693 7099	TransFuelPost2004: ChargeOnly:[blank]	Motorchar ge	blank
<b>North Terrace Campus - Non-Specific</b>	North Terrace Adelaide South Australia 5005	0577 6707		Motorchar ge	
<b>North Terrace Campus - Non-Specific</b>	North Terrace Adelaide South Australia 5005	1066 9087		Motorchar ge	
<b>North Terrace Campus - Non-Specific</b>	North Terrace Adelaide South Australia 5005	1678 3536	TransFuelPost2004: Diesel:[L]	Motorchar ge	L
<b>North Terrace Campus - Non-Specific</b>	North Terrace Adelaide South Australia 5005	1678 3536	TransFuelPost2004: Gasoline:[L]	Motorchar ge	L
<b>North Terrace Campus - Non-Specific</b>	North Terrace Adelaide South Australia 5005	1678 3536	TransFuelPost2004: ChargeOnly:[blank]	Motorchar ge	blank
<b>North Terrace Campus - Non-Specific</b>	North Terrace Adelaide South Australia 5005	1773 2896	TransFuelPost2004: Diesel:[L]	Motorchar ge	L
<b>North Terrace Campus - Non-Specific</b>	North Terrace Adelaide South Australia 5005	1773 2896	TransFuelPost2004: ChargeOnly:[blank]	Motorchar ge	blank
<b>North Terrace Campus - Non-Specific</b>	North Terrace Adelaide South Australia 5005	1974 9021	TransFuelPost2004: Diesel:[L]	Motorchar ge	L
<b>North Terrace Campus - Non-Specific</b>	North Terrace Adelaide South Australia 5005	1974 9021	TransFuelPost2004: ChargeOnly:[blank]	Motorchar ge	blank

North Terrace Campus - Non-Specific	North Terrace Adelaide South Australia 5005	2105 3594	TransFuelPost2004: ChargeOnly:[blank]	Motorcharge	blank
North Terrace Campus - Non-Specific	North Terrace Adelaide South Australia 5005	2390 8423	TransFuelPost2004: Diesel:[L]	Motorcharge	L
North Terrace Campus - Non-Specific	North Terrace Adelaide South Australia 5005	2390 8423	TransFuelPost2004: Gasoline:[L]	Motorcharge	L
North Terrace Campus - Non-Specific	North Terrace Adelaide South Australia 5005	2390 8423	TransFuelPost2004: ChargeOnly:[blank]	Motorcharge	blank
North Terrace Campus - Non-Specific	North Terrace Adelaide South Australia 5005	2831 7638	TransFuelPost2004: Diesel:[L]	Motorcharge	L
North Terrace Campus - Non-Specific	North Terrace Adelaide South Australia 5005	2831 7638	TransFuelPost2004: ChargeOnly:[blank]	Motorcharge	blank
North Terrace Campus - Non-Specific	North Terrace Adelaide South Australia 5005	2915 3883	TransFuelPost2004: Diesel:[L]	Motorcharge	L
North Terrace Campus - Non-Specific	North Terrace Adelaide South Australia 5005	2915 3883	TransFuelPost2004: ChargeOnly:[blank]	Motorcharge	blank
North Terrace Campus - Non-Specific	North Terrace Adelaide South Australia 5005	5307 3577	TransFuelPost2004: Diesel:[L]	Motorcharge	L
North Terrace Campus - Non-Specific	North Terrace Adelaide South Australia 5005	5307 3577	TransFuelPost2004: Gasoline:[L]	Motorcharge	L
North Terrace Campus - Non-Specific	North Terrace Adelaide South Australia 5005	5307 3577	TransFuelPost2004: ChargeOnly:[blank]	Motorcharge	blank
North Terrace Campus - Non-Specific	North Terrace Adelaide South Australia 5005	5328 7540	TransFuelPost2004: Diesel:[L]	Motorcharge	L
North Terrace Campus - Non-Specific	North Terrace Adelaide South Australia 5005	5328 7540	TransFuelPost2004: Gasoline:[L]	Motorcharge	L
North Terrace Campus - Non-Specific	North Terrace Adelaide South Australia 5005	5328 7540	TransFuelPost2004: ChargeOnly:[blank]	Motorcharge	blank
North Terrace Campus - Non-Specific	North Terrace Adelaide South Australia 5005	2828 2345		Motorcharge	
North Terrace Campus - Non-Specific	North Terrace Adelaide South Australia 5005	1402 2457	TransFuelPost2004: Gasoline:[L]	Motorcharge	L
North Terrace Campus - Non-Specific	North Terrace Adelaide South Australia 5005	1402 2457	TransFuelPost2004: ChargeOnly:[blank]	Motorcharge	blank
North Terrace Campus - Non-Specific	North Terrace Adelaide South Australia 5005	1466 2161	TransFuelPost2004: Gasoline:[L]	Motorcharge	L
North Terrace Campus - Non-Specific	North Terrace Adelaide South Australia 5005	1466 2161	TransFuelPost2004: ChargeOnly:[blank]	Motorcharge	blank
North Terrace Campus - Non-Specific	North Terrace Adelaide South Australia 5005	2399 0389	TransFuelPost2004: Diesel:[L]	Motorcharge	L

North Terrace Campus - Non-Specific	North Terrace Adelaide South Australia 5005	2399 0389	TransFuelPost2004: ChargeOnly:[blank]	Motorcharge	blank
North Terrace Campus - Non-Specific	North Terrace Adelaide South Australia 5005	1463 0135	TransFuelPost2004: Gasoline:[L]	Motorcharge	L
North Terrace Campus - Non-Specific	North Terrace Adelaide South Australia 5005	1463 0135	TransFuelPost2004: ChargeOnly:[blank]	Motorcharge	blank
North Terrace Campus - Non-Specific	North Terrace Adelaide South Australia 5005	2218 4620		Motorcharge	
North Terrace Campus - Non-Specific	North Terrace Adelaide South Australia 5005	2924 4096	TransFuelPost2004: Diesel:[L]	Motorcharge	L
North Terrace Campus - Non-Specific	North Terrace Adelaide South Australia 5005	2924 4096	TransFuelPost2004: ChargeOnly:[blank]	Motorcharge	blank
North Terrace Campus - Non-Specific	North Terrace Adelaide South Australia 5005	1158 0051		Motorcharge	
North Terrace Campus - Non-Specific	North Terrace Adelaide South Australia 5005	0559 8606	TransFuelPost2004: Gasoline:[L]	Motorcharge	L
North Terrace Campus - Non-Specific	North Terrace Adelaide South Australia 5005	0559 8606	TransFuelPost2004: ChargeOnly:[blank]	Motorcharge	blank
North Terrace Campus - Non-Specific	North Terrace Adelaide South Australia 5005	1530 8244		Motorcharge	
North Terrace Campus - Non-Specific	North Terrace Adelaide South Australia 5005	6115 7149		Motorcharge	
North Terrace Campus - Non-Specific	North Terrace Adelaide South Australia 5005	1466 2294		Motorcharge	
North Terrace Campus - Non-Specific	North Terrace Adelaide South Australia 5005	1580 8284		Motorcharge	
North Terrace Campus - Non-Specific	North Terrace Adelaide South Australia 5005	0577 6947		Motorcharge	
North Terrace Campus - Non-Specific	North Terrace Adelaide South Australia 5005	1260 2409	TransFuelPost2004: Diesel:[L]	Motorcharge	L
North Terrace Campus - Non-Specific	North Terrace Adelaide South Australia 5005	1260 2409	TransFuelPost2004: Gasoline:[L]	Motorcharge	L
North Terrace Campus - Non-Specific	North Terrace Adelaide South Australia 5005	1260 2409	TransFuelPost2004: ChargeOnly:[blank]	Motorcharge	blank
North Terrace Campus - Non-Specific	North Terrace Adelaide South Australia 5005	1260 2417	TransFuelPost2004: Diesel:[L]	Motorcharge	L
North Terrace Campus - Non-Specific	North Terrace Adelaide South Australia 5005	1260 2417	TransFuelPost2004: ChargeOnly:[blank]	Motorcharge	blank
North Terrace Campus - Non-Specific	North Terrace Adelaide South Australia 5005	1260 2425	TransFuelPost2004: Diesel:[L]	Motorcharge	L

North Terrace Campus - Non-Specific	North Terrace Adelaide South Australia 5005	1260 2425	TransFuelPost2004: ChargeOnly:[blank]	Motorcharge	blank
North Terrace Campus - Non-Specific	North Terrace Adelaide South Australia 5005	1260 2474	TransFuelPost2004: Diesel:[L]	Motorcharge	L
North Terrace Campus - Non-Specific	North Terrace Adelaide South Australia 5005	1260 2474	TransFuelPost2004: Gasoline:[L]	Motorcharge	L
North Terrace Campus - Non-Specific	North Terrace Adelaide South Australia 5005	1260 2474	TransFuelPost2004: ChargeOnly:[blank]	Motorcharge	blank
North Terrace Campus - Non-Specific	North Terrace Adelaide South Australia 5005	1561 4054	TransFuelPost2004: Diesel:[L]	Motorcharge	L
North Terrace Campus - Non-Specific	North Terrace Adelaide South Australia 5005	1561 4054	TransFuelPost2004: Gasoline:[L]	Motorcharge	L
North Terrace Campus - Non-Specific	North Terrace Adelaide South Australia 5005	1561 4054	TransFuelPost2004: ChargeOnly:[blank]	Motorcharge	blank
North Terrace Campus - Non-Specific	North Terrace Adelaide South Australia 5005	1974 2505		Motorcharge	
North Terrace Campus - Non-Specific	North Terrace Adelaide South Australia 5005	2803 1544	TransFuelPost2004: Diesel:[L]	Motorcharge	L
North Terrace Campus - Non-Specific	North Terrace Adelaide South Australia 5005	2803 1544	TransFuelPost2004: ChargeOnly:[blank]	Motorcharge	blank
North Terrace Campus - Non-Specific	North Terrace Adelaide South Australia 5005	1371 9111	TransFuelPost2004: ChargeOnly:[blank]	Motorcharge	blank
North Terrace Campus - Non-Specific	North Terrace Adelaide South Australia 5005	2740 4932		Motorcharge	
North Terrace Campus - Non-Specific	North Terrace Adelaide South Australia 5005	1797 5107		Motorcharge	
North Terrace Campus - Non-Specific	North Terrace Adelaide South Australia 5005	2188 9930	TransFuelPost2004: ChargeOnly:[blank]	Motorcharge	blank
North Terrace Campus - Non-Specific	North Terrace Adelaide South Australia 5005	2241 0793	TransFuelPost2004: Gasoline:[L]	Motorcharge	L
North Terrace Campus - Non-Specific	North Terrace Adelaide South Australia 5005	2241 0793	TransFuelPost2004: ChargeOnly:[blank]	Motorcharge	blank
North Terrace Campus - Non-Specific	North Terrace Adelaide South Australia 5005	2457 1717		Motorcharge	
North Terrace Campus - Non-Specific	North Terrace Adelaide South Australia 5005	5254 3687	TransFuelPost2004: Gasoline:[L]	Motorcharge	L
North Terrace Campus - Non-Specific	North Terrace Adelaide South Australia 5005	5254 3687	TransFuelPost2004: ChargeOnly:[blank]	Motorcharge	blank
North Terrace Campus - Non-Specific	North Terrace Adelaide South Australia 5005	2566 0303		Motorcharge	

North Terrace Campus - Non-Specific	North Terrace Adelaide South Australia 5005	1502 0302		Motorcharge	
North Terrace Campus - Non-Specific	North Terrace Adelaide South Australia 5005	2783 1464		Motorcharge	
North Terrace Campus - Non-Specific	North Terrace Adelaide South Australia 5005	2748 0999	TransFuelPost2004: Gasoline:[L]	Motorcharge	L
North Terrace Campus - Non-Specific	North Terrace Adelaide South Australia 5005	2748 0999	TransFuelPost2004: ChargeOnly:[blank]	Motorcharge	blank
North Terrace Campus - Non-Specific	North Terrace Adelaide South Australia 5005	2354 4673	TransFuelPost2004: Gasoline:[L]	Motorcharge	L
North Terrace Campus - Non-Specific	North Terrace Adelaide South Australia 5005	2354 4673	TransFuelPost2004: ChargeOnly:[blank]	Motorcharge	blank
North Terrace Campus - Non-Specific	North Terrace Adelaide South Australia 5005	2380 1305	TransFuelPost2004: Gasoline:[L]	Motorcharge	L
North Terrace Campus - Non-Specific	North Terrace Adelaide South Australia 5005	2380 1305	TransFuelPost2004: ChargeOnly:[blank]	Motorcharge	blank
North Terrace Campus - Non-Specific	North Terrace Adelaide South Australia 5005	2603 7519	TransFuelPost2004: Gasoline:[L]	Motorcharge	L
North Terrace Campus - Non-Specific	North Terrace Adelaide South Australia 5005	2603 7519	TransFuelPost2004: ChargeOnly:[blank]	Motorcharge	blank
North Terrace Campus - Non-Specific	North Terrace Adelaide South Australia 5005	1791 9204	TransFuelPost2004: Gasoline:[L]	Motorcharge	L
North Terrace Campus - Non-Specific	North Terrace Adelaide South Australia 5005	1791 9204	TransFuelPost2004: E10:[L]	Motorcharge	L
North Terrace Campus - Non-Specific	North Terrace Adelaide South Australia 5005	1791 9204	TransFuelPost2004: ChargeOnly:[blank]	Motorcharge	blank
North Terrace Campus - Non-Specific	North Terrace Adelaide South Australia 5005	2422 0737	TransFuelPost2004: Gasoline:[L]	Motorcharge	L
North Terrace Campus - Non-Specific	North Terrace Adelaide South Australia 5005	2422 0737	TransFuelPost2004: ChargeOnly:[blank]	Motorcharge	blank
North Terrace Campus - Non-Specific	North Terrace Adelaide South Australia 5005	2135 9306		Motorcharge	
North Terrace Campus - Non-Specific	North Terrace Adelaide South Australia 5005	2591 4932	TransFuelPost2004: Diesel:[L]	Motorcharge	L
North Terrace Campus - Non-Specific	North Terrace Adelaide South Australia 5005	2591 4932	TransFuelPost2004: ChargeOnly:[blank]	Motorcharge	blank
North Terrace Campus - Non-Specific	North Terrace Adelaide South Australia 5005	2726 5739	TransFuelPost2004: Diesel:[L]	Motorcharge	L
North Terrace Campus - Non-Specific	North Terrace Adelaide South Australia 5005	2726 5739	TransFuelPost2004: ChargeOnly:[blank]	Motorcharge	blank

North Terrace Campus - Non-Specific	North Terrace Adelaide South Australia 5005	6297 3791	TransFuelPost2004: ChargeOnly:[blank]	Motorcharge	blank
North Terrace Campus - Non-Specific	North Terrace Adelaide South Australia 5005	2796 6443		Motorcharge	
North Terrace Campus - Non-Specific	North Terrace Adelaide South Australia 5005	2716 9998	TransFuelPost2004: ChargeOnly:[blank]	Motorcharge	blank
North Terrace Campus - Non-Specific	North Terrace Adelaide South Australia 5005	0453 7837	TransFuelPost2004: Gasoline:[L]	Motorcharge	L
North Terrace Campus - Non-Specific	North Terrace Adelaide South Australia 5005	0453 7837	TransFuelPost2004: ChargeOnly:[blank]	Motorcharge	blank
North Terrace Campus - Non-Specific	North Terrace Adelaide South Australia 5005	0983 7091		Motorcharge	
North Terrace Campus - Non-Specific	North Terrace Adelaide South Australia 5005	0892 9618	TransFuelPost2004: Gasoline:[L]	Motorcharge	L
North Terrace Campus - Non-Specific	North Terrace Adelaide South Australia 5005	0892 9618	TransFuelPost2004: ChargeOnly:[blank]	Motorcharge	blank
North Terrace Campus - Non-Specific	North Terrace Adelaide South Australia 5005	1762 3459	TransFuelPost2004: Diesel:[L]	Motorcharge	L
North Terrace Campus - Non-Specific	North Terrace Adelaide South Australia 5005	1762 3459	TransFuelPost2004: Gasoline:[L]	Motorcharge	L
North Terrace Campus - Non-Specific	North Terrace Adelaide South Australia 5005	1762 3459	TransFuelPost2004: ChargeOnly:[blank]	Motorcharge	blank
North Terrace Campus - Non-Specific	North Terrace Adelaide South Australia 5005	2227 2870	TransFuelPost2004: Gasoline:[L]	Motorcharge	L
North Terrace Campus - Non-Specific	North Terrace Adelaide South Australia 5005	2227 2870	TransFuelPost2004: ChargeOnly:[blank]	Motorcharge	blank
North Terrace Campus - Non-Specific	North Terrace Adelaide South Australia 5005	2942 2825	TransFuelPost2004: Gasoline:[L]	Motorcharge	L
North Terrace Campus - Non-Specific	North Terrace Adelaide South Australia 5005	2942 2825	TransFuelPost2004: ChargeOnly:[blank]	Motorcharge	blank
North Terrace Campus - Non-Specific	North Terrace Adelaide South Australia 5005	1689 3533		Motorcharge	
North Terrace Campus - Non-Specific	North Terrace Adelaide South Australia 5005	1580 8276		Motorcharge	
North Terrace Campus - Non-Specific	North Terrace Adelaide South Australia 5005	1594 2984	TransFuelPost2004: ChargeOnly:[blank]	Motorcharge	blank
North Terrace Campus - Non-Specific	North Terrace Adelaide South Australia 5005	1543 6219		Motorcharge	
North Terrace Campus - Non-Specific	North Terrace Adelaide South Australia 5005	5018 0540	TransFuelPost2004: ChargeOnly:[blank]	Motorcharge	blank

North Terrace Campus - Non-Specific	North Terrace Adelaide South Australia 5005	5217 2677		Motorcharge	
North Terrace Campus - Non-Specific	North Terrace Adelaide South Australia 5005	5773 0115		Motorcharge	
North Terrace Campus - Non-Specific	North Terrace Adelaide South Australia 5005	5858 8942		Motorcharge	
North Terrace Campus - Non-Specific	North Terrace Adelaide South Australia 5005	6657 2193	TransFuelPost2004: Gasoline:[L]	Motorcharge	L
North Terrace Campus - Non-Specific	North Terrace Adelaide South Australia 5005	6657 2193	TransFuelPost2004: ChargeOnly:[blank]	Motorcharge	blank
North Terrace Campus - Non-Specific	North Terrace Adelaide South Australia 5005	5316 1281	TransFuelPost2004: Gasoline:[L]	Motorcharge	L
North Terrace Campus - Non-Specific	North Terrace Adelaide South Australia 5005	5316 1281	TransFuelPost2004: ChargeOnly:[blank]	Motorcharge	blank
North Terrace Campus - Non-Specific	North Terrace Adelaide South Australia 5005	5609 4695	TransFuelPost2004: Diesel:[L]	Motorcharge	L
North Terrace Campus - Non-Specific	North Terrace Adelaide South Australia 5005	5609 4695	TransFuelPost2004: Gasoline:[L]	Motorcharge	L
North Terrace Campus - Non-Specific	North Terrace Adelaide South Australia 5005	5609 4695	TransFuelPost2004: ChargeOnly:[blank]	Motorcharge	blank
North Terrace Campus - Non-Specific	North Terrace Adelaide South Australia 5005	5868 6811	TransFuelPost2004: Diesel:[L]	Motorcharge	L
North Terrace Campus - Non-Specific	North Terrace Adelaide South Australia 5005	5868 6811	TransFuelPost2004: ChargeOnly:[blank]	Motorcharge	blank
North Terrace Campus - Non-Specific	North Terrace Adelaide South Australia 5005	5571 9250		Motorcharge	
North Terrace Campus - Non-Specific	North Terrace Adelaide South Australia 5005	6160 7887		Motorcharge	
North Terrace Campus - Non-Specific	North Terrace Adelaide South Australia 5005	6570 7592		Motorcharge	
North Terrace Campus - Non-Specific	North Terrace Adelaide South Australia 5005	5316 5779	TransFuelPost2004: Gasoline:[L]	Motorcharge	L
North Terrace Campus - Non-Specific	North Terrace Adelaide South Australia 5005	5316 5779	TransFuelPost2004: ChargeOnly:[blank]	Motorcharge	blank
North Terrace Campus - Non-Specific	North Terrace Adelaide South Australia 5005	5450 9702	TransFuelPost2004: ChargeOnly:[blank]	Motorcharge	blank
North Terrace Campus - Non-Specific	North Terrace Adelaide South Australia 5005	5676 4818	TransFuelPost2004: ChargeOnly:[blank]	Motorcharge	blank
North Terrace Campus - Non-Specific	North Terrace Adelaide South Australia 5005	6058 1927	TransFuelPost2004: Gasoline:[L]	Motorcharge	L

North Terrace Campus - Non-Specific	North Terrace Adelaide South Australia 5005	6058 1927	TransFuelPost2004: ChargeOnly:[blank]	Motorcharge	blank
North Terrace Campus - Non-Specific	North Terrace Adelaide South Australia 5005	6203 8603	TransFuelPost2004: Gasoline:[L]	Motorcharge	L
North Terrace Campus - Non-Specific	North Terrace Adelaide South Australia 5005	6203 8603	TransFuelPost2004: ChargeOnly:[blank]	Motorcharge	blank
North Terrace Campus - Non-Specific	North Terrace Adelaide South Australia 5005	6278 2481	TransFuelPost2004: Gasoline:[L]	Motorcharge	L
North Terrace Campus - Non-Specific	North Terrace Adelaide South Australia 5005	6278 2481	TransFuelPost2004: ChargeOnly:[blank]	Motorcharge	blank
North Terrace Campus - Non-Specific	North Terrace Adelaide South Australia 5005	6449 6973	TransFuelPost2004: Diesel:[L]	Motorcharge	L
North Terrace Campus - Non-Specific	North Terrace Adelaide South Australia 5005	6449 6973	TransFuelPost2004: ChargeOnly:[blank]	Motorcharge	blank
North Terrace Campus - Non-Specific	North Terrace Adelaide South Australia 5005	6459 9099	TransFuelPost2004: ChargeOnly:[blank]	Motorcharge	blank
North Terrace Campus - Non-Specific	North Terrace Adelaide South Australia 5005	5592 7697	TransFuelPost2004: Gasoline:[L]	Motorcharge	L
North Terrace Campus - Non-Specific	North Terrace Adelaide South Australia 5005	5592 7697	TransFuelPost2004: E10:[L]	Motorcharge	L
North Terrace Campus - Non-Specific	North Terrace Adelaide South Australia 5005	5592 7697	TransFuelPost2004: ChargeOnly:[blank]	Motorcharge	blank
North Terrace Campus - Non-Specific	North Terrace Adelaide South Australia 5005	5754 7402	TransFuelPost2004: Diesel:[L]	Motorcharge	L
North Terrace Campus - Non-Specific	North Terrace Adelaide South Australia 5005	5754 7402	TransFuelPost2004: Gasoline:[L]	Motorcharge	L
North Terrace Campus - Non-Specific	North Terrace Adelaide South Australia 5005	5754 7402	TransFuelPost2004: ChargeOnly:[blank]	Motorcharge	blank
North Terrace Campus - Non-Specific	North Terrace Adelaide South Australia 5005	5823 6229	TransFuelPost2004: Gasoline:[L]	Motorcharge	L
North Terrace Campus - Non-Specific	North Terrace Adelaide South Australia 5005	5823 6229	TransFuelPost2004: ChargeOnly:[blank]	Motorcharge	blank
North Terrace Campus - Non-Specific	North Terrace Adelaide South Australia 5005	6002 7640	TransFuelPost2004: Gasoline:[L]	Motorcharge	L
North Terrace Campus - Non-Specific	North Terrace Adelaide South Australia 5005	6002 7640	TransFuelPost2004: ChargeOnly:[blank]	Motorcharge	blank
North Terrace Campus - Non-Specific	North Terrace Adelaide South Australia 5005	5792 3264	TransFuelPost2004: Gasoline:[L]	Motorcharge	L
North Terrace Campus - Non-Specific	North Terrace Adelaide South Australia 5005	5792 3264	TransFuelPost2004: ChargeOnly:[blank]	Motorcharge	blank

<b>Roseworthy Campus - Non-Specific</b>	Roseworthy Campus The University of Adelaide Roseworthy South Australia 5371	1797 5776	TransFuelPost2004: Diesel:[L]	Motorcharge	L
<b>Roseworthy Campus - Non-Specific</b>	Roseworthy Campus The University of Adelaide Roseworthy South Australia 5371	1797 5776	TransFuelPost2004: Gasoline:[L]	Motorcharge	L
<b>Roseworthy Campus - Non-Specific</b>	Roseworthy Campus The University of Adelaide Roseworthy South Australia 5371	1797 5776	TransFuelPost2004: ChargeOnly:[blank]	Motorcharge	blank
<b>Roseworthy Campus - Non-Specific</b>	Roseworthy Campus The University of Adelaide Roseworthy South Australia 5371	1845 3716		Motorcharge	
<b>Roseworthy Campus - Non-Specific</b>	Roseworthy Campus The University of Adelaide Roseworthy South Australia 5371	1898 6608	TransFuelPost2004: ChargeOnly:[blank]	Motorcharge	blank
<b>Roseworthy Campus - Non-Specific</b>	Roseworthy Campus The University of Adelaide Roseworthy South Australia 5371	2175 3896		Motorcharge	
<b>Roseworthy Campus - Non-Specific</b>	Roseworthy Campus The University of Adelaide Roseworthy South Australia 5371	2424 5254		Motorcharge	
<b>Roseworthy Campus - Non-Specific</b>	Roseworthy Campus The University of Adelaide Roseworthy South Australia 5371	2562 1925	TransFuelPost2004: Diesel:[L]	Motorcharge	L
<b>Roseworthy Campus - Non-Specific</b>	Roseworthy Campus The University of Adelaide Roseworthy South Australia 5371	2562 1925	TransFuelPost2004: Gasoline:[L]	Motorcharge	L
<b>Roseworthy Campus - Non-Specific</b>	Roseworthy Campus The University of Adelaide Roseworthy South Australia 5371	2562 1925	TransFuelPost2004: ChargeOnly:[blank]	Motorcharge	blank
<b>Roseworthy Campus - Non-Specific</b>	Roseworthy Campus The University of Adelaide Roseworthy South Australia 5371	2699 6748		Motorcharge	
<b>Roseworthy Campus - Non-Specific</b>	Roseworthy Campus The University of Adelaide Roseworthy South Australia 5371	2874 1910		Motorcharge	
<b>Roseworthy Campus - Non-Specific</b>	Roseworthy Campus The University of Adelaide Roseworthy South Australia 5371	6333 8770	TransFuelPost2004: Gasoline:[L]	Motorcharge	L

<b>Roseworthy Campus - Non-Specific</b>	Roseworthy Campus The University of Adelaide Roseworthy South Australia 5371	6333 8770	TransFuelPost2004: ChargeOnly:[blank]	Motorcharge	blank
<b>Roseworthy Campus - Non-Specific</b>	Roseworthy Campus The University of Adelaide Roseworthy South Australia 5371	Martindale Holdings - Diesel	TransFuelPost2004: Diesel:[L]	Not specified	L
<b>Roseworthy Campus - Non-Specific</b>	Roseworthy Campus The University of Adelaide Roseworthy South Australia 5371	Martindale Holdings - Petrol	TransFuelPost2004: Gasoline:[L]	Not specified	L
<b>Rural Health - Non-Specific</b>	Rural Health Adelaide South Australia 5000	2232 9456	TransFuelPost2004: Gasoline:[L]	Motorcharge	L
<b>Rural Health - Non-Specific</b>	Rural Health Adelaide South Australia 5000	2232 9456	TransFuelPost2004: ChargeOnly:[blank]	Motorcharge	blank
<b>Rural Health - Non-Specific</b>	Rural Health Adelaide South Australia 5000	2595 9648	TransFuelPost2004: Gasoline:[L]	Motorcharge	L
<b>Rural Health - Non-Specific</b>	Rural Health Adelaide South Australia 5000	2595 9648	TransFuelPost2004: ChargeOnly:[blank]	Motorcharge	blank
<b>Rural Health - Non-Specific</b>	Rural Health Adelaide South Australia 5000	2596 4929	TransFuelPost2004: Gasoline:[L]	Motorcharge	L
<b>Rural Health - Non-Specific</b>	Rural Health Adelaide South Australia 5000	2596 4929	TransFuelPost2004: ChargeOnly:[blank]	Motorcharge	blank
<b>Rural Health - Non-Specific</b>	Rural Health Adelaide South Australia 5000	2603 7501	TransFuelPost2004: Gasoline:[L]	Motorcharge	L
<b>Rural Health - Non-Specific</b>	Rural Health Adelaide South Australia 5000	2603 7501	TransFuelPost2004: ChargeOnly:[blank]	Motorcharge	blank
<b>Rural Health - Non-Specific</b>	Rural Health Adelaide South Australia 5000	2740 7224	TransFuelPost2004: ChargeOnly:[blank]	Motorcharge	blank
<b>Rural Health - Non-Specific</b>	Rural Health Adelaide South Australia 5000	2964 2703	TransFuelPost2004: Gasoline:[L]	Motorcharge	L
<b>Rural Health - Non-Specific</b>	Rural Health Adelaide South Australia 5000	2964 2703	TransFuelPost2004: ChargeOnly:[blank]	Motorcharge	blank
<b>Unallocated fuel cards</b>	N/A	5176 1827		Motorcharge	
<b>Unallocated fuel cards</b>	N/A	5614 5893		Motorcharge	
<b>Unallocated fuel cards</b>	N/A	6095 8653	TransFuelPost2004: Gasoline:[L]	Motorcharge	L
<b>Unallocated fuel cards</b>	N/A	6095 8653	TransFuelPost2004: ChargeOnly:[blank]	Motorcharge	blank
<b>Unallocated fuel cards</b>	N/A	6045 0867	TransFuelPost2004: Gasoline:[L]	Motorcharge	L
<b>Unallocated fuel cards</b>	N/A	6045 0867	TransFuelPost2004: ChargeOnly:[blank]	Motorcharge	blank
<b>Unallocated fuel cards</b>	N/A	5725 6491	TransFuelPost2004: Diesel:[L]	Motorcharge	L

Unallocated fuel cards	N/A	5725 6491	TransFuelPost2004: Gasoline:[L]	Motorcharge	L
Unallocated fuel cards	N/A	5725 6491	TransFuelPost2004: ChargeOnly:[blank]	Motorcharge	blank
Unallocated fuel cards	N/A	6314 8807	TransFuelPost2004: Diesel:[L]	Motorcharge	L
Unallocated fuel cards	N/A	6314 8807	TransFuelPost2004: Gasoline:[L]	Motorcharge	L
Unallocated fuel cards	N/A	6314 8807	TransFuelPost2004: ChargeOnly:[blank]	Motorcharge	blank
Unallocated fuel cards	N/A	5144 6254	TransFuelPost2004: Diesel:[L]	Motorcharge	L
Unallocated fuel cards	N/A	5144 6254	TransFuelPost2004: Gasoline:[L]	Motorcharge	L
Unallocated fuel cards	N/A	5144 6254	TransFuelPost2004: ChargeOnly:[blank]	Motorcharge	blank
Unallocated fuel cards	N/A	5373 3915	TransFuelPost2004: Diesel:[L]	Motorcharge	L
Unallocated fuel cards	N/A	5373 3915	TransFuelPost2004: Gasoline:[L]	Motorcharge	L
Unallocated fuel cards	N/A	5373 3915	TransFuelPost2004: ChargeOnly:[blank]	Motorcharge	blank
Unallocated fuel cards	N/A	5578 1086	TransFuelPost2004: Gasoline:[L]	Motorcharge	L
Unallocated fuel cards	N/A	5578 1086	TransFuelPost2004: ChargeOnly:[blank]	Motorcharge	blank
Unallocated fuel cards	N/A	6248 2710	TransFuelPost2004: Gasoline:[L]	Motorcharge	L
Unallocated fuel cards	N/A	6248 2710	TransFuelPost2004: ChargeOnly:[blank]	Motorcharge	blank
Unallocated fuel cards	N/A	5343 6162	TransFuelPost2004: Gasoline:[L]	Motorcharge	L
Unallocated fuel cards	N/A	5343 6162	TransFuelPost2004: ChargeOnly:[blank]	Motorcharge	blank
Unallocated fuel cards	N/A	5786 1415	TransFuelPost2004: Gasoline:[L]	Motorcharge	L
Unallocated fuel cards	N/A	5786 1415	TransFuelPost2004: ChargeOnly:[blank]	Motorcharge	blank
Waite Campus - Non-Specific	Waite Road Urrbrae South Australia 5064	0432 1315		Motorcharge	
Waite Campus - Non-Specific	Waite Road Urrbrae South Australia 5064	0459 9233		Motorcharge	
Waite Campus - Non-Specific	Waite Road Urrbrae South Australia 5064	0503 6573	TransFuelPost2004: ChargeOnly:[blank]	Motorcharge	blank
Waite Campus - Non-Specific	Waite Road Urrbrae South Australia 5064	0641 0082		Motorcharge	
Waite Campus - Non-Specific	Waite Road Urrbrae South Australia 5064	0909 9890		Motorcharge	
Waite Campus - Non-Specific	Waite Road Urrbrae South Australia 5064	0971 6196	TransFuelPost2004: Diesel:[L]	Motorcharge	L
Waite Campus - Non-Specific	Waite Road Urrbrae South Australia 5064	0971 6196	TransFuelPost2004: Gasoline:[L]	Motorcharge	L

Waite Campus - Non-Specific	Waite Road Urrbrae South Australia 5064	0971 6196	TransFuelPost2004: ChargeOnly:[blank]	Motorcharge	blank
Waite Campus - Non-Specific	Waite Road Urrbrae South Australia 5064	1124 8618	TransFuelPost2004: Gasoline:[L]	Motorcharge	L
Waite Campus - Non-Specific	Waite Road Urrbrae South Australia 5064	1124 8618	TransFuelPost2004: ChargeOnly:[blank]	Motorcharge	blank
Waite Campus - Non-Specific	Waite Road Urrbrae South Australia 5064	1184 0588	TransFuelPost2004: Diesel:[L]	Motorcharge	L
Waite Campus - Non-Specific	Waite Road Urrbrae South Australia 5064	1184 0588	TransFuelPost2004: Gasoline:[L]	Motorcharge	L
Waite Campus - Non-Specific	Waite Road Urrbrae South Australia 5064	1184 0588	TransFuelPost2004: ChargeOnly:[blank]	Motorcharge	blank
Waite Campus - Non-Specific	Waite Road Urrbrae South Australia 5064	1222 7405		Motorcharge	
Waite Campus - Non-Specific	Waite Road Urrbrae South Australia 5064	1260 2086		Motorcharge	
Waite Campus - Non-Specific	Waite Road Urrbrae South Australia 5064	1264 6422	TransFuelPost2004: Diesel:[L]	Motorcharge	L
Waite Campus - Non-Specific	Waite Road Urrbrae South Australia 5064	1264 6422	TransFuelPost2004: Gasoline:[L]	Motorcharge	L
Waite Campus - Non-Specific	Waite Road Urrbrae South Australia 5064	1264 6422	TransFuelPost2004: ChargeOnly:[blank]	Motorcharge	blank
Waite Campus - Non-Specific	Waite Road Urrbrae South Australia 5064	1401 3928	TransFuelPost2004: Diesel:[L]	Motorcharge	L
Waite Campus - Non-Specific	Waite Road Urrbrae South Australia 5064	1401 3928	TransFuelPost2004: ChargeOnly:[blank]	Motorcharge	blank
Waite Campus - Non-Specific	Waite Road Urrbrae South Australia 5064	1486 9584	TransFuelPost2004: Gasoline:[L]	Motorcharge	L
Waite Campus - Non-Specific	Waite Road Urrbrae South Australia 5064	1486 9584	TransFuelPost2004: ChargeOnly:[blank]	Motorcharge	blank
Waite Campus - Non-Specific	Waite Road Urrbrae South Australia 5064	1654 8251	TransFuelPost2004: Diesel:[L]	Motorcharge	L
Waite Campus - Non-Specific	Waite Road Urrbrae South Australia 5064	1654 8251	TransFuelPost2004: Gasoline:[L]	Motorcharge	L
Waite Campus - Non-Specific	Waite Road Urrbrae South Australia 5064	1654 8251	TransFuelPost2004: ChargeOnly:[blank]	Motorcharge	blank
Waite Campus - Non-Specific	Waite Road Urrbrae South Australia 5064	1689 4119		Motorcharge	
Waite Campus - Non-Specific	Waite Road Urrbrae South Australia 5064	1796 8508	TransFuelPost2004: Diesel:[L]	Motorcharge	L

Waite Campus - Non-Specific	Waite Road Urrbrae South Australia 5064	1796 8508	TransFuelPost2004: ChargeOnly:[blank]	Motorchar ge	blank
Waite Campus - Non-Specific	Waite Road Urrbrae South Australia 5064	1814 6237		Motorchar ge	
Waite Campus - Non-Specific	Waite Road Urrbrae South Australia 5064	1871 2558	TransFuelPost2004: Diesel:[L]	Motorchar ge	L
Waite Campus - Non-Specific	Waite Road Urrbrae South Australia 5064	1871 2558	TransFuelPost2004: ChargeOnly:[blank]	Motorchar ge	blank
Waite Campus - Non-Specific	Waite Road Urrbrae South Australia 5064	2033 3062		Motorchar ge	
Waite Campus - Non-Specific	Waite Road Urrbrae South Australia 5064	2068 6899	TransFuelPost2004: Gasoline:[L]	Motorchar ge	L
Waite Campus - Non-Specific	Waite Road Urrbrae South Australia 5064	2068 6899	TransFuelPost2004: ChargeOnly:[blank]	Motorchar ge	blank
Waite Campus - Non-Specific	Waite Road Urrbrae South Australia 5064	2135 0495	TransFuelPost2004: Diesel:[L]	Motorchar ge	L
Waite Campus - Non-Specific	Waite Road Urrbrae South Australia 5064	2135 0495	TransFuelPost2004: Gasoline:[L]	Motorchar ge	L
Waite Campus - Non-Specific	Waite Road Urrbrae South Australia 5064	2135 0495	TransFuelPost2004: ChargeOnly:[blank]	Motorchar ge	blank
Waite Campus - Non-Specific	Waite Road Urrbrae South Australia 5064	2215 1553		Motorchar ge	
Waite Campus - Non-Specific	Waite Road Urrbrae South Australia 5064	2419 1599	TransFuelPost2004: Diesel:[L]	Motorchar ge	L
Waite Campus - Non-Specific	Waite Road Urrbrae South Australia 5064	2419 1599	TransFuelPost2004: ChargeOnly:[blank]	Motorchar ge	blank
Waite Campus - Non-Specific	Waite Road Urrbrae South Australia 5064	2483 4412	TransFuelPost2004: Diesel:[L]	Motorchar ge	L
Waite Campus - Non-Specific	Waite Road Urrbrae South Australia 5064	2483 4412	TransFuelPost2004: Gasoline:[L]	Motorchar ge	L
Waite Campus - Non-Specific	Waite Road Urrbrae South Australia 5064	2483 4412	TransFuelPost2004: ChargeOnly:[blank]	Motorchar ge	blank
Waite Campus - Non-Specific	Waite Road Urrbrae South Australia 5064	2555 6121		Motorchar ge	
Waite Campus - Non-Specific	Waite Road Urrbrae South Australia 5064	2597 4696	TransFuelPost2004: Diesel:[L]	Motorchar ge	L
Waite Campus - Non-Specific	Waite Road Urrbrae South Australia 5064	2597 4696	TransFuelPost2004: Gasoline:[L]	Motorchar ge	L
Waite Campus - Non-Specific	Waite Road Urrbrae South Australia 5064	2597 4696	TransFuelPost2004: ChargeOnly:[blank]	Motorchar ge	blank

Waite Campus - Non-Specific	Waite Road Urrbrae South Australia 5064	2651 7429	TransFuelPost2004: Gasoline:[L]	Motorcharge	L
Waite Campus - Non-Specific	Waite Road Urrbrae South Australia 5064	2651 7429	TransFuelPost2004: ChargeOnly:[blank]	Motorcharge	blank
Waite Campus - Non-Specific	Waite Road Urrbrae South Australia 5064	2727 1828	TransFuelPost2004: Gasoline:[L]	Motorcharge	L
Waite Campus - Non-Specific	Waite Road Urrbrae South Australia 5064	2727 1828	TransFuelPost2004: ChargeOnly:[blank]	Motorcharge	blank
Waite Campus - Non-Specific	Waite Road Urrbrae South Australia 5064	2822 5849		Motorcharge	
Waite Campus - Non-Specific	Waite Road Urrbrae South Australia 5064	2970 8454	TransFuelPost2004: Gasoline:[L]	Motorcharge	L
Waite Campus - Non-Specific	Waite Road Urrbrae South Australia 5064	2970 8454	TransFuelPost2004: ChargeOnly:[blank]	Motorcharge	blank
Waite Campus - Non-Specific	Waite Road Urrbrae South Australia 5064	0607 5885		Motorcharge	
Waite Campus - Non-Specific	Waite Road Urrbrae South Australia 5064	2719 3097		Motorcharge	
10 Pulteney St	North Terrace Adelaide South Australia 5005	50077786	WasteToLandFill:Un diffCommercialIndust rial:[tonne]	Veolia	tonne s
10 Pulteney St	North Terrace Adelaide South Australia 5005	WasteTest			
210 Grote Street - The Village	210 Grote Street Adelaide SA 5000	50082699	WasteToLandFill:Un diffCommercialIndust rial:[tonne]	Veolia	tonne s
AHMS	100 North Terrace Adelaide South Australia 5000	50077849	WasteToLandFill:Un diffCommercialIndust rial:[tonne]	Veolia	tonne s
AHMS	100 North Terrace Adelaide South Australia 5000	50077849	WasteToLandFill:Cli nical_Incinerated:[to nne]	Veolia	tonne s
Botanic Hackney Road Adelaide SA 5000	Botanic Hackney Road Adelaide SA 5000	50078359	WasteToLandFill:Cli nical_Incinerated:[to nne]	Veolia	tonne s
ISS - Adel Uni - ADHOC University of Adelaide, ADELAIDE SA 5000	ISS - Adel Uni - ADHOC  University of Adelaide, ADELAIDE SA 5000	50075457			
ISS - Adel Uni - RL General University of Adelaide, ADELAIDE 500	ISS - Adel Uni - RL General  University of Adelaide, ADELAIDE 500	50075262			
National Wine Centre	Cnr Botanic and Hackney Road Adelaide South Australia 5000	50077668	WasteToLandFill:Un diffCommercialIndust rial:[tonne]	Veolia	tonne s
National Wine Centre	Cnr Botanic and Hackney Road Adelaide South Australia 5000	50077668	WasteToLandFill:Un diffCommercialIndust rial:[m3]	Veolia	m3

North Terrace Campus - Non-Specific	North Terrace Adelaide South Australia 5005	50048473		Veolia	
North Terrace Campus - Non-Specific	North Terrace Adelaide South Australia 5005	50048531		Veolia	
North Terrace Campus - Non-Specific	North Terrace Adelaide South Australia 5005	50048409		Veolia	
North Terrace Campus - Non-Specific	North Terrace Adelaide South Australia 5005	50077843	WasteToLandFill:UndiffCommercialIndustrial:[tonne]	Veolia	tonnes
North Terrace Campus - Non-Specific	North Terrace Adelaide South Australia 5005	50077843	WasteToLandFill:Inert:[tonne]	Veolia	tonnes
North Terrace Campus - Non-Specific	North Terrace Adelaide South Australia 5005	50077843	WasteToLandFill:Inert:[L]	Veolia	L
North Terrace Campus - Non-Specific	North Terrace Adelaide South Australia 5005	50077843	WasteToLandFill:Clinical_Incinerated:[tonne]	Veolia	tonnes
North Terrace Campus - Non-Specific	North Terrace Adelaide South Australia 5005	50077784	WasteToLandFill:UndiffCommercialIndustrial:[tonne]	Veolia	tonnes
North Terrace Campus - Non-Specific	North Terrace Adelaide South Australia 5005	50077784	WasteToLandFill:Sludge:[tonne]	Veolia	tonnes
North Terrace Campus - Non-Specific	North Terrace Adelaide South Australia 5005	50077784	WasteToLandFill:UndiffCommercialIndustrial:[m3]	Veolia	m3
North Terrace Campus - Non-Specific	North Terrace Adelaide South Australia 5005	50077784	WasteToLandFill:Clinical_Incinerated:[tonne]	Veolia	tonnes
North Terrace Campus, ADELAIDE SA 5000	North Terrace Campus, ADELAIDE SA 5000	50081450	WasteToLandFill:UndiffCommercialIndustrial:[tonne]	Veolia	tonnes
North Terrace Campus, ADELAIDE SA 5000	North Terrace Campus, ADELAIDE SA 5000	50081450	WasteToLandFill:Inert:[L]	Veolia	L
OEH Lab Public Health	28 Anderson Street Thebarton SA 5031	50048830		Veolia	
Roseworthy Campus - Non-Specific	Roseworthy Campus The University of Adelaide Roseworthy South Australia 5371	50077844	WasteToLandFill:UndiffCommercialIndustrial:[tonne]	Veolia	tonnes
Roseworthy Campus - Non-Specific	Roseworthy Campus The University of Adelaide Roseworthy South Australia 5371	50077844	WasteToLandFill:Inert:[L]	Veolia	L
Roseworthy Campus - Non-Specific	Roseworthy Campus The University of Adelaide Roseworthy South Australia 5371	50077844	WasteToLandFill:Clinical_Incinerated:[tonne]	Veolia	tonnes
Roseworthy Campus - Non-Specific	Roseworthy Campus The University of Adelaide Roseworthy South Australia 5371	50077782	WasteToLandFill:UndiffCommercialIndustrial:[tonne]	Veolia	tonnes

<b>Roseworthy Campus - Non-Specific</b>	Roseworthy Campus The University of Adelaide Roseworthy South Australia 5371	50077782	WasteToLandFill:UndiffCommercialIndustrial:[m3]	Veolia	m3
<b>Roseworthy Campus - Non-Specific</b>	Roseworthy Campus The University of Adelaide Roseworthy South Australia 5371	50077782	WasteToLandFill:Clinical_Incinerated:[tonne]	Veolia	tonnes
<b>Thebarton Campus - Non-specific</b>	35-37 Strirling Street Thebarton South Australia 5031	50078352	WasteToLandFill:Sludge:[tonne]	Veolia	tonnes
<b>Thebarton Campus - Non-specific</b>	35-37 Strirling Street Thebarton South Australia 5031	50078352	WasteToLandFill:Clinical_Incinerated:[tonne]	Veolia	tonnes
<b>Waite Campus - Non-Specific</b>	Waite Road Urrbrae South Australia 5064	50048486		Veolia	
<b>Waite Campus - Non-Specific</b>	Waite Road Urrbrae South Australia 5064	50049861		Veolia	
<b>Waite Campus - Non-Specific</b>	Waite Road Urrbrae South Australia 5064	50077846	WasteToLandFill:UndiffCommercialIndustrial:[tonne]	Veolia	tonnes
<b>Waite Campus - Non-Specific</b>	Waite Road Urrbrae South Australia 5064	50077846	WasteToLandFill:Sludge:[tonne]	Veolia	tonnes
<b>Waite Campus - Non-Specific</b>	Waite Road Urrbrae South Australia 5064	50077846	WasteToLandFill:UndiffCommercialIndustrial:[m3]	Veolia	m3
<b>Waite Campus - Non-Specific</b>	Waite Road Urrbrae South Australia 5064	50077846	WasteToLandFill:Inert:[L]	Veolia	L
<b>Waite Campus - Non-Specific</b>	Waite Road Urrbrae South Australia 5064	50077846	WasteToLandFill:Clinical_Incinerated:[tonne]	Veolia	tonnes
<b>Waite Campus - Non-Specific</b>	Waite Road Urrbrae South Australia 5064	50077783	WasteToLandFill:UndiffCommercialIndustrial:[tonne]	Veolia	tonnes
<b>Waite Campus - Non-Specific</b>	Waite Road Urrbrae South Australia 5064	50077783	WasteToLandFill:UndiffCommercialIndustrial:[m3]	Veolia	m3
<b>Waite Campus - Non-Specific</b>	Waite Road Urrbrae South Australia 5064	50077783	WasteToLandFill:Clinical_Incinerated:[tonne]	Veolia	tonnes
<b>1 Harbour View</b>	1 Harbour View Port Lincoln South Australia 5606	9343504009	Water:RecycledWater:[kL]	SA Water	kL
<b>1 Harbour View</b>	1 Harbour View Port Lincoln South Australia 5606	9343504009	Water:OtherWater:[kL]	SA Water	kL
<b>1 Harbour View</b>	1 Harbour View Port Lincoln South Australia 5606	9343504009	Water:PotableWater:SA:[kL]	SA Water	kL
<b>1 Harbour View</b>	1 Harbour View Port Lincoln South Australia 5606	9343504009	Water:Sewerage:SA:[kL]	SA Water	kL
<b>10/88 Barry Street</b>	10/88 Barry Street Port Augusta South Australia 5700	6614107002	Water:RecycledWater:[kL]	SA Water	kL

10/88 Barry Street	10/88 Barry Street Port Augusta South Australia 5700	6614107002	Water:OtherWater:[kL]	SA Water	kL
10/88 Barry Street	10/88 Barry Street Port Augusta South Australia 5700	6614107002	Water:PotableWater:SA:[kL]	SA Water	kL
10/88 Barry Street	10/88 Barry Street Port Augusta South Australia 5700	6614107002	Water:Sewerage:SA:[kL]	SA Water	kL
142 New West Road	142 New West Road Port Lincoln South Australia 5606	9342876003	Water:RecycledWater:[kL]	SA Water	kL
142 New West Road	142 New West Road Port Lincoln South Australia 5606	9342876003	Water:OtherWater:[kL]	SA Water	kL
142 New West Road	142 New West Road Port Lincoln South Australia 5606	9342876003	Water:PotableWater:SA:[kL]	SA Water	kL
142 New West Road	142 New West Road Port Lincoln South Australia 5606	9342876003	Water:Sewerage:SA:[kL]	SA Water	kL
1454 MUDLA WIRRA RD WASLEYS	1454 MUDLA WIRRA RD WASLEYS	3151543006	Water:RecycledWater:[kL]	SA Water	kL
1454 MUDLA WIRRA RD WASLEYS	1454 MUDLA WIRRA RD WASLEYS	3151543006	Water:OtherWater:[kL]	SA Water	kL
1454 MUDLA WIRRA RD WASLEYS	1454 MUDLA WIRRA RD WASLEYS	3151543006	Water:PotableWater:SA:[kL]	SA Water	kL
1454 MUDLA WIRRA RD WASLEYS	1454 MUDLA WIRRA RD WASLEYS	3151543006	Water:Sewerage:SA:[kL]	SA Water	kL
16-26 Finnis Street	16-26 Finnis Street North Adelaide South Australia 5006	222751803	Water:RecycledWater:[kL]	SA Water	kL
16-26 Finnis Street	16-26 Finnis Street North Adelaide South Australia 5006	222751803	Water:OtherWater:[kL]	SA Water	kL
16-26 Finnis Street	16-26 Finnis Street North Adelaide South Australia 5006	222751803	Water:PotableWater:SA:[kL]	SA Water	kL
16-26 Finnis Street	16-26 Finnis Street North Adelaide South Australia 5006	222751803	Water:Sewerage:SA:[kL]	SA Water	kL
16-26 Finnis Street	16-26 Finnis Street North Adelaide South Australia 5006	022275190*	Water:RecycledWater:[kL]	SA Water	kL
16-26 Finnis Street	16-26 Finnis Street North Adelaide South Australia 5006	022275190*	Water:OtherWater:[kL]	SA Water	kL
16-26 Finnis Street	16-26 Finnis Street North Adelaide South Australia 5006	022275190*	Water:PotableWater:SA:[kL]	SA Water	kL
16-26 Finnis Street	16-26 Finnis Street North Adelaide South Australia 5006	022275190*	Water:Sewerage:SA:[kL]	SA Water	kL
19 Fifth Street	19 Fifth Street Minlaton South Australia 5575	5407828515		SA Water	
19/82 Barry Street	19/82 Barry Street Port Augusta South Australia 5700	6614110009	Water:RecycledWater:[kL]	SA Water	kL
19/82 Barry Street	19/82 Barry Street Port Augusta South Australia 5700	6614110009	Water:OtherWater:[kL]	SA Water	kL

<b>19/82 Barry Street</b>	19/82 Barry Street Port Augusta South Australia 5700	6614110009	Water:PotableWater: SA:[kL]	SA Water	kL
<b>19/82 Barry Street</b>	19/82 Barry Street Port Augusta South Australia 5700	6614110009	Water:Sewerage:SA: [kL]	SA Water	kL
<b>274 GRAINGERS RD WASLEYS</b>	274 GRAINGERS RD WASLEYS	3151531005	Water:RecycledWater: r:[kL]	SA Water	kL
<b>274 GRAINGERS RD WASLEYS</b>	274 GRAINGERS RD WASLEYS	3151531005	Water:OtherWater:[k L]	SA Water	kL
<b>274 GRAINGERS RD WASLEYS</b>	274 GRAINGERS RD WASLEYS	3151531005	Water:PotableWater: SA:[kL]	SA Water	kL
<b>274 GRAINGERS RD WASLEYS</b>	274 GRAINGERS RD WASLEYS	3151531005	Water:Sewerage:SA: [kL]	SA Water	kL
<b>3 Harbour View</b>	3 Harbour View Port Lincoln South Australia 5606	9343505001	Water:RecycledWater: r:[kL]	SA Water	kL
<b>3 Harbour View</b>	3 Harbour View Port Lincoln South Australia 5606	9343505001	Water:OtherWater:[k L]	SA Water	kL
<b>3 Harbour View</b>	3 Harbour View Port Lincoln South Australia 5606	9343505001	Water:PotableWater: SA:[kL]	SA Water	kL
<b>3 Harbour View</b>	3 Harbour View Port Lincoln South Australia 5606	9343505001	Water:Sewerage:SA: [kL]	SA Water	kL
<b>625-671 BURBRIDGE RD WEST BEACH PT LT1 F2029</b>	625-671 BURBRIDGE RD WEST BEACH PT LT1 F2029	2122029505	Water:RecycledWater: r:[kL]	SA Water	kL
<b>625-671 BURBRIDGE RD WEST BEACH PT LT1 F2029</b>	625-671 BURBRIDGE RD WEST BEACH PT LT1 F2029	2122029505	Water:OtherWater:[k L]	SA Water	kL
<b>625-671 BURBRIDGE RD WEST BEACH PT LT1 F2029</b>	625-671 BURBRIDGE RD WEST BEACH PT LT1 F2029	2122029505	Water:PotableWater: SA:[kL]	SA Water	kL
<b>625-671 BURBRIDGE RD WEST BEACH PT LT1 F2029</b>	625-671 BURBRIDGE RD WEST BEACH PT LT1 F2029	2122029505	Water:Sewerage:SA: [kL]	SA Water	kL
<b>78 BUCKBY RD WASLEYS</b>	78 BUCKBY RD WASLEYS	3151631057	Water:RecycledWater: r:[kL]	SA Water	kL
<b>78 BUCKBY RD WASLEYS</b>	78 BUCKBY RD WASLEYS	3151631057	Water:OtherWater:[k L]	SA Water	kL
<b>78 BUCKBY RD WASLEYS</b>	78 BUCKBY RD WASLEYS	3151631057	Water:PotableWater: SA:[kL]	SA Water	kL
<b>78 BUCKBY RD WASLEYS</b>	78 BUCKBY RD WASLEYS	3151631057	Water:Sewerage:SA: [kL]	SA Water	kL
<b>Adelaide Parklands</b>	War Memorial Drive Adelaide Parklands Adelaide South Australia 5006	223408564	Water:RecycledWater: r:[kL]	SA Water	kL
<b>Adelaide Parklands</b>	War Memorial Drive Adelaide Parklands Adelaide South Australia 5006	223408564	Water:OtherWater:[k L]	SA Water	kL
<b>Adelaide Parklands</b>	War Memorial Drive Adelaide Parklands Adelaide South Australia 5006	223408564	Water:PotableWater: SA:[kL]	SA Water	kL

<b>Adelaide Parklands</b>	War Memorial Drive Adelaide Parklands Adelaide South Australia 5006	223408564	Water:Sewerage:SA: [kL]	SA Water	kL
<b>AHMS</b>	100 North Terrace Adelaide South Australia 5000	201815206	Water:RecycledWater: [kL]	SA Water	kL
<b>AHMS</b>	100 North Terrace Adelaide South Australia 5000	201815206	Water:OtherWater:[k L]	SA Water	kL
<b>AHMS</b>	100 North Terrace Adelaide South Australia 5000	201815206	Water:PotableWater: SA:[kL]	SA Water	kL
<b>AHMS</b>	100 North Terrace Adelaide South Australia 5000	201815206	Water:Sewerage:SA: [kL]	SA Water	kL
<b>HD MUDLA WIRRA LT 166 PT SEC 689</b>	HD MUDLA WIRRA LT 166 PT SEC 689	9120604387	Water:RecycledWater: [kL]	SA Water	kL
<b>HD MUDLA WIRRA LT 166 PT SEC 689</b>	HD MUDLA WIRRA LT 166 PT SEC 689	9120604387	Water:PotableWater: SA:[kL]	SA Water	kL
<b>HD MUDLA WIRRA LT 166 PT SEC 689</b>	HD MUDLA WIRRA LT 166 PT SEC 689	9120604387	Water:Sewerage:SA: [kL]	SA Water	kL
<b>LT 11 D51367 KINTORE AVE ADELAIDE</b>	LT 11 D51367 KINTORE AVE ADELAIDE	205746025	Water:RecycledWater: [kL]	SA Water	kL
<b>LT 11 D51367 KINTORE AVE ADELAIDE</b>	LT 11 D51367 KINTORE AVE ADELAIDE	205746025	Water:OtherWater:[k L]	SA Water	kL
<b>LT 11 D51367 KINTORE AVE ADELAIDE</b>	LT 11 D51367 KINTORE AVE ADELAIDE	205746025	Water:PotableWater: SA:[kL]	SA Water	kL
<b>LT 11 D51367 KINTORE AVE ADELAIDE</b>	LT 11 D51367 KINTORE AVE ADELAIDE	205746025	Water:Sewerage:SA: [kL]	SA Water	kL
<b>LT 2 CONGDON RD WASLEYS</b>	LT 2 CONGDON RD WASLEYS	3151512007	Water:RecycledWater: [kL]	SA Water	kL
<b>LT 2 CONGDON RD WASLEYS</b>	LT 2 CONGDON RD WASLEYS	3151512007	Water:OtherWater:[k L]	SA Water	kL
<b>LT 2 CONGDON RD WASLEYS</b>	LT 2 CONGDON RD WASLEYS	3151512007	Water:PotableWater: SA:[kL]	SA Water	kL
<b>LT 2 CONGDON RD WASLEYS</b>	LT 2 CONGDON RD WASLEYS	3151512007	Water:Sewerage:SA: [kL]	SA Water	kL
<b>LT 31 MUDLA WIRRA RD WASLEYS</b>	LT 31 MUDLA WIRRA RD WASLEYS	315163600*	Water:RecycledWater: [kL]	SA Water	kL
<b>LT 31 MUDLA WIRRA RD WASLEYS</b>	LT 31 MUDLA WIRRA RD WASLEYS	315163600*	Water:OtherWater:[k L]	SA Water	kL
<b>LT 31 MUDLA WIRRA RD WASLEYS</b>	LT 31 MUDLA WIRRA RD WASLEYS	315163600*	Water:PotableWater: SA:[kL]	SA Water	kL
<b>LT 31 MUDLA WIRRA RD WASLEYS</b>	LT 31 MUDLA WIRRA RD WASLEYS	315163600*	Water:Sewerage:SA: [kL]	SA Water	kL
<b>LT 678 SELLECK RD WASLEYS</b>	LT 678 SELLECK RD WASLEYS	3151540008	Water:RecycledWater: [kL]	SA Water	kL
<b>LT 678 SELLECK RD WASLEYS</b>	LT 678 SELLECK RD WASLEYS	3151540008	Water:OtherWater:[k L]	SA Water	kL
<b>LT 678 SELLECK RD WASLEYS</b>	LT 678 SELLECK RD WASLEYS	3151540008	Water:PotableWater: SA:[kL]	SA Water	kL
<b>LT 678 SELLECK RD WASLEYS</b>	LT 678 SELLECK RD WASLEYS	3151540008	Water:Sewerage:SA: [kL]	SA Water	kL
<b>LT 704 CALLAHAN RD REEVES PLAINS</b>	LT 704 CALLAHAN RD REEVES PLAINS	3151537001	Water:RecycledWater: [kL]	SA Water	kL
<b>LT 704 CALLAHAN RD REEVES PLAINS</b>	LT 704 CALLAHAN RD REEVES PLAINS	3151537001	Water:OtherWater:[k L]	SA Water	kL

LT 704 CALLAHAN RD REEVES PLAINS	LT 704 CALLAHAN RD REEVES PLAINS	3151537001	Water:PotableWater:SA:[kL]	SA Water	kL
LT 704 CALLAHAN RD REEVES PLAINS	LT 704 CALLAHAN RD REEVES PLAINS	3151537001	Water:Sewerage:SA:[kL]	SA Water	kL
LT 745 BRIDGE RD COOBOWIE	LT 745 BRIDGE RD COOBOWIE	5406330387	Water:RecycledWater:[kL]	SA Water	kL
LT 745 BRIDGE RD COOBOWIE	LT 745 BRIDGE RD COOBOWIE	5406330387	Water:OtherWater:[kL]	SA Water	kL
LT 745 BRIDGE RD COOBOWIE	LT 745 BRIDGE RD COOBOWIE	5406330387	Water:PotableWater:SA:[kL]	SA Water	kL
LT 745 BRIDGE RD COOBOWIE	LT 745 BRIDGE RD COOBOWIE	5406330387	Water:Sewerage:SA:[kL]	SA Water	kL
LT 822 MUDLA WIRRA RD WASLEYS	LT 822 MUDLA WIRRA RD WASLEYS	3151633001	Water:RecycledWater:[kL]	SA Water	kL
LT 822 MUDLA WIRRA RD WASLEYS	LT 822 MUDLA WIRRA RD WASLEYS	3151633001	Water:OtherWater:[kL]	SA Water	kL
LT 822 MUDLA WIRRA RD WASLEYS	LT 822 MUDLA WIRRA RD WASLEYS	3151633001	Water:PotableWater:SA:[kL]	SA Water	kL
LT 822 MUDLA WIRRA RD WASLEYS	LT 822 MUDLA WIRRA RD WASLEYS	3151633001	Water:Sewerage:SA:[kL]	SA Water	kL
North Terrace Campus - Non-Specific	North Terrace Adelaide South Australia 5005	203345009	Water:RecycledWater:[kL]	SA Water	kL
North Terrace Campus - Non-Specific	North Terrace Adelaide South Australia 5005	203345009	Water:OtherWater:[kL]	SA Water	kL
North Terrace Campus - Non-Specific	North Terrace Adelaide South Australia 5005	203345009	Water:PotableWater:SA:[kL]	SA Water	kL
North Terrace Campus - Non-Specific	North Terrace Adelaide South Australia 5005	203345009	Water:Sewerage:SA:[kL]	SA Water	kL
North Terrace Campus - Non-Specific	North Terrace Adelaide South Australia 5005	205775600	Water:RecycledWater:[kL]	SA Water	kL
North Terrace Campus - Non-Specific	North Terrace Adelaide South Australia 5005	205775600	Water:OtherWater:[kL]	SA Water	kL
North Terrace Campus - Non-Specific	North Terrace Adelaide South Australia 5005	205775600	Water:PotableWater:SA:[kL]	SA Water	kL
North Terrace Campus - Non-Specific	North Terrace Adelaide South Australia 5005	205775600	Water:Sewerage:SA:[kL]	SA Water	kL
North Terrace Campus - Non-Specific	North Terrace Adelaide South Australia 5005	020575413*	Water:RecycledWater:[kL]	SA Water	kL
North Terrace Campus - Non-Specific	North Terrace Adelaide South Australia 5005	020575413*	Water:OtherWater:[kL]	SA Water	kL
North Terrace Campus - Non-Specific	North Terrace Adelaide South Australia 5005	020575413*	Water:PotableWater:SA:[kL]	SA Water	kL
North Terrace Campus - Non-Specific	North Terrace Adelaide South Australia 5005	020575413*	Water:Sewerage:SA:[kL]	SA Water	kL
North Terrace Campus - Non-Specific	North Terrace Adelaide South Australia 5005	203310009	Water:RecycledWater:[kL]	SA Water	kL

<b>North Terrace Campus - Non-Specific</b>	North Terrace Adelaide South Australia 5005	203310009	Water:OtherWater:[kL]	SA Water	kL
<b>North Terrace Campus - Non-Specific</b>	North Terrace Adelaide South Australia 5005	203310009	Water:PotableWater:SA:[kL]	SA Water	kL
<b>North Terrace Campus - Non-Specific</b>	North Terrace Adelaide South Australia 5005	203310009	Water:Sewerage:SA:[kL]	SA Water	kL
<b>North Terrace Campus - Non-Specific</b>	North Terrace Adelaide South Australia 5005	223406497	Water:RecycledWater:[kL]	SA Water	kL
<b>North Terrace Campus - Non-Specific</b>	North Terrace Adelaide South Australia 5005	223406497	Water:OtherWater:[kL]	SA Water	kL
<b>North Terrace Campus - Non-Specific</b>	North Terrace Adelaide South Australia 5005	223406497	Water:PotableWater:SA:[kL]	SA Water	kL
<b>North Terrace Campus - Non-Specific</b>	North Terrace Adelaide South Australia 5005	223406497	Water:Sewerage:SA:[kL]	SA Water	kL
<b>North Terrace Campus - Non-Specific</b>	North Terrace Adelaide South Australia 5005	223406569	Water:RecycledWater:[kL]	SA Water	kL
<b>North Terrace Campus - Non-Specific</b>	North Terrace Adelaide South Australia 5005	223406569	Water:OtherWater:[kL]	SA Water	kL
<b>North Terrace Campus - Non-Specific</b>	North Terrace Adelaide South Australia 5005	223406569	Water:PotableWater:SA:[kL]	SA Water	kL
<b>North Terrace Campus - Non-Specific</b>	North Terrace Adelaide South Australia 5005	223406569	Water:Sewerage:SA:[kL]	SA Water	kL
<b>North Terrace Campus - Non-Specific</b>	North Terrace Adelaide South Australia 5005	223407705	Water:RecycledWater:[kL]	SA Water	kL
<b>North Terrace Campus - Non-Specific</b>	North Terrace Adelaide South Australia 5005	223407705	Water:OtherWater:[kL]	SA Water	kL
<b>North Terrace Campus - Non-Specific</b>	North Terrace Adelaide South Australia 5005	223407705	Water:PotableWater:SA:[kL]	SA Water	kL
<b>North Terrace Campus - Non-Specific</b>	North Terrace Adelaide South Australia 5005	223407705	Water:Sewerage:SA:[kL]	SA Water	kL
<b>Roseworthy Campus - Houses</b>	Roseworthy Campus 15 Mudla Wirra Road Roseworthy South Australia 5371	9120604037	Water:RecycledWater:[kL]	SA Water	kL
<b>Roseworthy Campus - Houses</b>	Roseworthy Campus 15 Mudla Wirra Road Roseworthy South Australia 5371	9120604037	Water:PotableWater:SA:[kL]	SA Water	kL
<b>Roseworthy Campus - Houses</b>	Roseworthy Campus 15 Mudla Wirra Road Roseworthy South Australia 5371	9120604037	Water:Sewerage:SA:[kL]	SA Water	kL
<b>Roseworthy Campus - Houses</b>	Roseworthy Campus 15 Mudla Wirra Road Roseworthy South Australia 5371	9120604141	Water:RecycledWater:[kL]	SA Water	kL

<b>Roseworthy Campus - Houses</b>	Roseworthy Campus 15 Mudla Wirra Road Roseworthy South Australia 5371	9120604141	Water:PotableWater: SA:[kL]	SA Water	kL
<b>Roseworthy Campus - Houses</b>	Roseworthy Campus 15 Mudla Wirra Road Roseworthy South Australia 5371	9120604141	Water:Sewerage:SA: [kL]	SA Water	kL
<b>Roseworthy Campus - Houses</b>	Roseworthy Campus 15 Mudla Wirra Road Roseworthy South Australia 5371	9120604299	Water:RecycledWater: r:[kL]	SA Water	kL
<b>Roseworthy Campus - Houses</b>	Roseworthy Campus 15 Mudla Wirra Road Roseworthy South Australia 5371	9120604299	Water:PotableWater: SA:[kL]	SA Water	kL
<b>Roseworthy Campus - Houses</b>	Roseworthy Campus 15 Mudla Wirra Road Roseworthy South Australia 5371	9120604299	Water:Sewerage:SA: [kL]	SA Water	kL
<b>Roseworthy Campus - Houses</b>	Roseworthy Campus 15 Mudla Wirra Road Roseworthy South Australia 5371	9120604328	Water:RecycledWater: r:[kL]	SA Water	kL
<b>Roseworthy Campus - Houses</b>	Roseworthy Campus 15 Mudla Wirra Road Roseworthy South Australia 5371	9120604328	Water:PotableWater: SA:[kL]	SA Water	kL
<b>Roseworthy Campus - Houses</b>	Roseworthy Campus 15 Mudla Wirra Road Roseworthy South Australia 5371	9120604328	Water:Sewerage:SA: [kL]	SA Water	kL
<b>Roseworthy Campus - Houses</b>	Roseworthy Campus 15 Mudla Wirra Road Roseworthy South Australia 5371	9120604360	Water:RecycledWater: r:[kL]	SA Water	kL
<b>Roseworthy Campus - Houses</b>	Roseworthy Campus 15 Mudla Wirra Road Roseworthy South Australia 5371	9120604360	Water:PotableWater: SA:[kL]	SA Water	kL
<b>Roseworthy Campus - Houses</b>	Roseworthy Campus 15 Mudla Wirra Road Roseworthy South Australia 5371	9120604360	Water:Sewerage:SA: [kL]	SA Water	kL
<b>Roseworthy Campus - Non-Specific</b>	Roseworthy Campus The University of Adelaide Roseworthy South Australia 5371	9120604010	Water:RecycledWater: r:[kL]	SA Water	kL
<b>Roseworthy Campus - Non-Specific</b>	Roseworthy Campus The University of Adelaide Roseworthy South Australia 5371	9120604010	Water:PotableWater: SA:[kL]	SA Water	kL
<b>Roseworthy Campus - Non-Specific</b>	Roseworthy Campus The University of Adelaide Roseworthy South Australia 5371	9120604010	Water:Sewerage:SA: [kL]	SA Water	kL
<b>Roseworthy Campus - Non-Specific</b>	Roseworthy Campus The University of Adelaide Roseworthy South Australia 5371	9120604029	Water:RecycledWater: r:[kL]	SA Water	kL

<b>Roseworthy Campus - Non-Specific</b>	Roseworthy Campus The University of Adelaide Roseworthy South Australia 5371	9120604029	Water:PotableWater: SA:[kL]	SA Water	kL
<b>Roseworthy Campus - Non-Specific</b>	Roseworthy Campus The University of Adelaide Roseworthy South Australia 5371	9120604029	Water:Sewerage:SA: [kL]	SA Water	kL
<b>Roseworthy Campus - Non-Specific</b>	Roseworthy Campus The University of Adelaide Roseworthy South Australia 5371	9120604045	Water:RecycledWater: r:[kL]	SA Water	kL
<b>Roseworthy Campus - Non-Specific</b>	Roseworthy Campus The University of Adelaide Roseworthy South Australia 5371	9120604045	Water:PotableWater: SA:[kL]	SA Water	kL
<b>Roseworthy Campus - Non-Specific</b>	Roseworthy Campus The University of Adelaide Roseworthy South Australia 5371	9120604045	Water:Sewerage:SA: [kL]	SA Water	kL
<b>Roseworthy Campus - Non-Specific</b>	Roseworthy Campus The University of Adelaide Roseworthy South Australia 5371	9120604053	Water:RecycledWater: r:[kL]	SA Water	kL
<b>Roseworthy Campus - Non-Specific</b>	Roseworthy Campus The University of Adelaide Roseworthy South Australia 5371	9120604053	Water:PotableWater: SA:[kL]	SA Water	kL
<b>Roseworthy Campus - Non-Specific</b>	Roseworthy Campus The University of Adelaide Roseworthy South Australia 5371	9120604053	Water:Sewerage:SA: [kL]	SA Water	kL
<b>Roseworthy Campus - Non-Specific</b>	Roseworthy Campus The University of Adelaide Roseworthy South Australia 5371	9120604061	Water:RecycledWater: r:[kL]	SA Water	kL
<b>Roseworthy Campus - Non-Specific</b>	Roseworthy Campus The University of Adelaide Roseworthy South Australia 5371	9120604061	Water:PotableWater: SA:[kL]	SA Water	kL
<b>Roseworthy Campus - Non-Specific</b>	Roseworthy Campus The University of Adelaide Roseworthy South Australia 5371	9120604061	Water:Sewerage:SA: [kL]	SA Water	kL
<b>Roseworthy Campus - Non-Specific</b>	Roseworthy Campus The University of Adelaide Roseworthy South Australia 5371	9120604088	Water:RecycledWater: r:[kL]	SA Water	kL
<b>Roseworthy Campus - Non-Specific</b>	Roseworthy Campus The University of Adelaide Roseworthy South Australia 5371	9120604088	Water:PotableWater: SA:[kL]	SA Water	kL

<b>Roseworthy Campus - Non-Specific</b>	Roseworthy Campus The University of Adelaide Roseworthy South Australia 5371	9120604088	Water:Sewerage:SA: [kL]	SA Water	kL
<b>Roseworthy Campus - Non-Specific</b>	Roseworthy Campus The University of Adelaide Roseworthy South Australia 5371	9120604096	Water:RecycledWater: r:[kL]	SA Water	kL
<b>Roseworthy Campus - Non-Specific</b>	Roseworthy Campus The University of Adelaide Roseworthy South Australia 5371	9120604096	Water:PotableWater: SA:[kL]	SA Water	kL
<b>Roseworthy Campus - Non-Specific</b>	Roseworthy Campus The University of Adelaide Roseworthy South Australia 5371	9120604096	Water:Sewerage:SA: [kL]	SA Water	kL
<b>Roseworthy Campus - Non-Specific</b>	Roseworthy Campus The University of Adelaide Roseworthy South Australia 5371	9120604109	Water:RecycledWater: r:[kL]	SA Water	kL
<b>Roseworthy Campus - Non-Specific</b>	Roseworthy Campus The University of Adelaide Roseworthy South Australia 5371	9120604109	Water:PotableWater: SA:[kL]	SA Water	kL
<b>Roseworthy Campus - Non-Specific</b>	Roseworthy Campus The University of Adelaide Roseworthy South Australia 5371	9120604109	Water:Sewerage:SA: [kL]	SA Water	kL
<b>Roseworthy Campus - Non-Specific</b>	Roseworthy Campus The University of Adelaide Roseworthy South Australia 5371	9120604117	Water:RecycledWater: r:[kL]	SA Water	kL
<b>Roseworthy Campus - Non-Specific</b>	Roseworthy Campus The University of Adelaide Roseworthy South Australia 5371	9120604117	Water:PotableWater: SA:[kL]	SA Water	kL
<b>Roseworthy Campus - Non-Specific</b>	Roseworthy Campus The University of Adelaide Roseworthy South Australia 5371	9120604117	Water:Sewerage:SA: [kL]	SA Water	kL
<b>Roseworthy Campus - Non-Specific</b>	Roseworthy Campus The University of Adelaide Roseworthy South Australia 5371	9120604125	Water:RecycledWater: r:[kL]	SA Water	kL
<b>Roseworthy Campus - Non-Specific</b>	Roseworthy Campus The University of Adelaide Roseworthy South Australia 5371	9120604125	Water:PotableWater: SA:[kL]	SA Water	kL
<b>Roseworthy Campus - Non-Specific</b>	Roseworthy Campus The University of Adelaide Roseworthy South Australia 5371	9120604125	Water:Sewerage:SA: [kL]	SA Water	kL

<b>Roseworthy Campus - Non-Specific</b>	Roseworthy Campus The University of Adelaide Roseworthy South Australia 5371	9120604133	Water:RecycledWater: r:[kL]	SA Water	kL
<b>Roseworthy Campus - Non-Specific</b>	Roseworthy Campus The University of Adelaide Roseworthy South Australia 5371	9120604133	Water:PotableWater: SA:[kL]	SA Water	kL
<b>Roseworthy Campus - Non-Specific</b>	Roseworthy Campus The University of Adelaide Roseworthy South Australia 5371	9120604133	Water:Sewerage:SA: [kL]	SA Water	kL
<b>Roseworthy Campus - Non-Specific</b>	Roseworthy Campus The University of Adelaide Roseworthy South Australia 5371	9120604168	Water:RecycledWater: r:[kL]	SA Water	kL
<b>Roseworthy Campus - Non-Specific</b>	Roseworthy Campus The University of Adelaide Roseworthy South Australia 5371	9120604168	Water:PotableWater: SA:[kL]	SA Water	kL
<b>Roseworthy Campus - Non-Specific</b>	Roseworthy Campus The University of Adelaide Roseworthy South Australia 5371	9120604168	Water:Sewerage:SA: [kL]	SA Water	kL
<b>Roseworthy Campus - Non-Specific</b>	Roseworthy Campus The University of Adelaide Roseworthy South Australia 5371	9120604176	Water:RecycledWater: r:[kL]	SA Water	kL
<b>Roseworthy Campus - Non-Specific</b>	Roseworthy Campus The University of Adelaide Roseworthy South Australia 5371	9120604176	Water:PotableWater: SA:[kL]	SA Water	kL
<b>Roseworthy Campus - Non-Specific</b>	Roseworthy Campus The University of Adelaide Roseworthy South Australia 5371	9120604176	Water:Sewerage:SA: [kL]	SA Water	kL
<b>Roseworthy Campus - Non-Specific</b>	Roseworthy Campus The University of Adelaide Roseworthy South Australia 5371	9120604192	Water:RecycledWater: r:[kL]	SA Water	kL
<b>Roseworthy Campus - Non-Specific</b>	Roseworthy Campus The University of Adelaide Roseworthy South Australia 5371	9120604192	Water:PotableWater: SA:[kL]	SA Water	kL
<b>Roseworthy Campus - Non-Specific</b>	Roseworthy Campus The University of Adelaide Roseworthy South Australia 5371	9120604192	Water:Sewerage:SA: [kL]	SA Water	kL
<b>Roseworthy Campus - Non-Specific</b>	Roseworthy Campus The University of Adelaide Roseworthy South Australia 5371	9120604205	Water:RecycledWater: r:[kL]	SA Water	kL

<b>Roseworthy Campus - Non-Specific</b>	Roseworthy Campus The University of Adelaide Roseworthy South Australia 5371	9120604205	Water:PotableWater: SA:[kL]	SA Water	kL
<b>Roseworthy Campus - Non-Specific</b>	Roseworthy Campus The University of Adelaide Roseworthy South Australia 5371	9120604205	Water:Sewerage:SA: [kL]	SA Water	kL
<b>Roseworthy Campus - Non-Specific</b>	Roseworthy Campus The University of Adelaide Roseworthy South Australia 5371	9120604213	Water:RecycledWater: r:[kL]	SA Water	kL
<b>Roseworthy Campus - Non-Specific</b>	Roseworthy Campus The University of Adelaide Roseworthy South Australia 5371	9120604213	Water:PotableWater: SA:[kL]	SA Water	kL
<b>Roseworthy Campus - Non-Specific</b>	Roseworthy Campus The University of Adelaide Roseworthy South Australia 5371	9120604213	Water:Sewerage:SA: [kL]	SA Water	kL
<b>Roseworthy Campus - Non-Specific</b>	Roseworthy Campus The University of Adelaide Roseworthy South Australia 5371	9120604248	Water:RecycledWater: r:[kL]	SA Water	kL
<b>Roseworthy Campus - Non-Specific</b>	Roseworthy Campus The University of Adelaide Roseworthy South Australia 5371	9120604248	Water:PotableWater: SA:[kL]	SA Water	kL
<b>Roseworthy Campus - Non-Specific</b>	Roseworthy Campus The University of Adelaide Roseworthy South Australia 5371	9120604248	Water:Sewerage:SA: [kL]	SA Water	kL
<b>Roseworthy Campus - Non-Specific</b>	Roseworthy Campus The University of Adelaide Roseworthy South Australia 5371	9120604256	Water:RecycledWater: r:[kL]	SA Water	kL
<b>Roseworthy Campus - Non-Specific</b>	Roseworthy Campus The University of Adelaide Roseworthy South Australia 5371	9120604256	Water:PotableWater: SA:[kL]	SA Water	kL
<b>Roseworthy Campus - Non-Specific</b>	Roseworthy Campus The University of Adelaide Roseworthy South Australia 5371	9120604256	Water:Sewerage:SA: [kL]	SA Water	kL
<b>Roseworthy Campus - Non-Specific</b>	Roseworthy Campus The University of Adelaide Roseworthy South Australia 5371	9120604264	Water:RecycledWater: r:[kL]	SA Water	kL
<b>Roseworthy Campus - Non-Specific</b>	Roseworthy Campus The University of Adelaide Roseworthy South Australia 5371	9120604264	Water:PotableWater: SA:[kL]	SA Water	kL

<b>Roseworthy Campus - Non-Specific</b>	Roseworthy Campus The University of Adelaide Roseworthy South Australia 5371	9120604264	Water:Sewerage:SA: [kL]	SA Water	kL
<b>Roseworthy Campus - Non-Specific</b>	Roseworthy Campus The University of Adelaide Roseworthy South Australia 5371	9120604272	Water:RecycledWater: r:[kL]	SA Water	kL
<b>Roseworthy Campus - Non-Specific</b>	Roseworthy Campus The University of Adelaide Roseworthy South Australia 5371	9120604272	Water:PotableWater: SA:[kL]	SA Water	kL
<b>Roseworthy Campus - Non-Specific</b>	Roseworthy Campus The University of Adelaide Roseworthy South Australia 5371	9120604272	Water:Sewerage:SA: [kL]	SA Water	kL
<b>Roseworthy Campus - Non-Specific</b>	Roseworthy Campus The University of Adelaide Roseworthy South Australia 5371	9120604280	Water:RecycledWater: r:[kL]	SA Water	kL
<b>Roseworthy Campus - Non-Specific</b>	Roseworthy Campus The University of Adelaide Roseworthy South Australia 5371	9120604280	Water:PotableWater: SA:[kL]	SA Water	kL
<b>Roseworthy Campus - Non-Specific</b>	Roseworthy Campus The University of Adelaide Roseworthy South Australia 5371	9120604280	Water:Sewerage:SA: [kL]	SA Water	kL
<b>Roseworthy Campus - Non-Specific</b>	Roseworthy Campus The University of Adelaide Roseworthy South Australia 5371	9120604336	Water:RecycledWater: r:[kL]	SA Water	kL
<b>Roseworthy Campus - Non-Specific</b>	Roseworthy Campus The University of Adelaide Roseworthy South Australia 5371	9120604336	Water:PotableWater: SA:[kL]	SA Water	kL
<b>Roseworthy Campus - Non-Specific</b>	Roseworthy Campus The University of Adelaide Roseworthy South Australia 5371	9120604336	Water:Sewerage:SA: [kL]	SA Water	kL
<b>Roseworthy Campus - Non-Specific</b>	Roseworthy Campus The University of Adelaide Roseworthy South Australia 5371	9120604344	Water:RecycledWater: r:[kL]	SA Water	kL
<b>Roseworthy Campus - Non-Specific</b>	Roseworthy Campus The University of Adelaide Roseworthy South Australia 5371	9120604344	Water:PotableWater: SA:[kL]	SA Water	kL
<b>Roseworthy Campus - Non-Specific</b>	Roseworthy Campus The University of Adelaide Roseworthy South Australia 5371	9120604344	Water:Sewerage:SA: [kL]	SA Water	kL

<b>Roseworthy Campus - Non-Specific</b>	Roseworthy Campus The University of Adelaide Roseworthy South Australia 5371	9120604352	Water:RecycledWater: r:[kL]	SA Water	kL
<b>Roseworthy Campus - Non-Specific</b>	Roseworthy Campus The University of Adelaide Roseworthy South Australia 5371	9120604352	Water:PotableWater: SA:[kL]	SA Water	kL
<b>Roseworthy Campus - Non-Specific</b>	Roseworthy Campus The University of Adelaide Roseworthy South Australia 5371	9120604352	Water:Sewerage:SA: [kL]	SA Water	kL
<b>Roseworthy Campus - Non-Specific</b>	Roseworthy Campus The University of Adelaide Roseworthy South Australia 5371	9120604379	Water:RecycledWater: r:[kL]	SA Water	kL
<b>Roseworthy Campus - Non-Specific</b>	Roseworthy Campus The University of Adelaide Roseworthy South Australia 5371	9120604379	Water:PotableWater: SA:[kL]	SA Water	kL
<b>Roseworthy Campus - Non-Specific</b>	Roseworthy Campus The University of Adelaide Roseworthy South Australia 5371	9120604379	Water:Sewerage:SA: [kL]	SA Water	kL
<b>Roseworthy Campus - Non-Specific</b>	Roseworthy Campus The University of Adelaide Roseworthy South Australia 5371	9120767055	Water:RecycledWater: r:[kL]	SA Water	kL
<b>Roseworthy Campus - Non-Specific</b>	Roseworthy Campus The University of Adelaide Roseworthy South Australia 5371	9120767055	Water:PotableWater: SA:[kL]	SA Water	kL
<b>Roseworthy Campus - Non-Specific</b>	Roseworthy Campus The University of Adelaide Roseworthy South Australia 5371	9120767055	Water:Sewerage:SA: [kL]	SA Water	kL
<b>Roseworthy Campus - Non-Specific</b>	Roseworthy Campus The University of Adelaide Roseworthy South Australia 5371	9120812020	Water:RecycledWater: r:[kL]	SA Water	kL
<b>Roseworthy Campus - Non-Specific</b>	Roseworthy Campus The University of Adelaide Roseworthy South Australia 5371	9120812020	Water:PotableWater: SA:[kL]	SA Water	kL
<b>Roseworthy Campus - Non-Specific</b>	Roseworthy Campus The University of Adelaide Roseworthy South Australia 5371	9120812020	Water:Sewerage:SA: [kL]	SA Water	kL
<b>Roseworthy Campus - Non-Specific</b>	Roseworthy Campus The University of Adelaide Roseworthy South Australia 5371	9120815758	Water:RecycledWater: r:[kL]	SA Water	kL

<b>Roseworthy Campus - Non-Specific</b>	Roseworthy Campus The University of Adelaide Roseworthy South Australia 5371	9120815758	Water:OtherWater:[kL]	SA Water	kL
<b>Roseworthy Campus - Non-Specific</b>	Roseworthy Campus The University of Adelaide Roseworthy South Australia 5371	9120815758	Water:PotableWater:SA:[kL]	SA Water	kL
<b>Roseworthy Campus - Non-Specific</b>	Roseworthy Campus The University of Adelaide Roseworthy South Australia 5371	9120815758	Water:Sewerage:SA:[kL]	SA Water	kL
<b>Roseworthy Campus - Non-Specific</b>	Roseworthy Campus The University of Adelaide Roseworthy South Australia 5371	912060407*	Water:RecycledWater:[kL]	SA Water	kL
<b>Roseworthy Campus - Non-Specific</b>	Roseworthy Campus The University of Adelaide Roseworthy South Australia 5371	912060407*	Water:PotableWater:SA:[kL]	SA Water	kL
<b>Roseworthy Campus - Non-Specific</b>	Roseworthy Campus The University of Adelaide Roseworthy South Australia 5371	912060407*	Water:Sewerage:SA:[kL]	SA Water	kL
<b>Roseworthy Campus - Non-Specific</b>	Roseworthy Campus The University of Adelaide Roseworthy South Australia 5371	912060415*	Water:RecycledWater:[kL]	SA Water	kL
<b>Roseworthy Campus - Non-Specific</b>	Roseworthy Campus The University of Adelaide Roseworthy South Australia 5371	912060415*	Water:PotableWater:SA:[kL]	SA Water	kL
<b>Roseworthy Campus - Non-Specific</b>	Roseworthy Campus The University of Adelaide Roseworthy South Australia 5371	912060415*	Water:Sewerage:SA:[kL]	SA Water	kL
<b>Roseworthy Campus - Non-Specific</b>	Roseworthy Campus The University of Adelaide Roseworthy South Australia 5371	912060423*	Water:RecycledWater:[kL]	SA Water	kL
<b>Roseworthy Campus - Non-Specific</b>	Roseworthy Campus The University of Adelaide Roseworthy South Australia 5371	912060423*	Water:PotableWater:SA:[kL]	SA Water	kL
<b>Roseworthy Campus - Non-Specific</b>	Roseworthy Campus The University of Adelaide Roseworthy South Australia 5371	912060423*	Water:Sewerage:SA:[kL]	SA Water	kL
<b>Roseworthy Campus - Non-Specific</b>	Roseworthy Campus The University of Adelaide Roseworthy South Australia 5371	912060431*	Water:RecycledWater:[kL]	SA Water	kL

<b>Roseworthy Campus - Non-Specific</b>	Roseworthy Campus The University of Adelaide Roseworthy South Australia 5371	912060431*	Water:PotableWater:SA:[kL]	SA Water	kL
<b>Roseworthy Campus - Non-Specific</b>	Roseworthy Campus The University of Adelaide Roseworthy South Australia 5371	912060431*	Water:Sewerage:SA:[kL]	SA Water	kL
<b>Roseworthy Campus - Non-Specific</b>	Roseworthy Campus The University of Adelaide Roseworthy South Australia 5371	912080950*	Water:RecycledWater:[kL]	SA Water	kL
<b>Roseworthy Campus - Non-Specific</b>	Roseworthy Campus The University of Adelaide Roseworthy South Australia 5371	912080950*	Water:PotableWater:SA:[kL]	SA Water	kL
<b>Roseworthy Campus - Non-Specific</b>	Roseworthy Campus The University of Adelaide Roseworthy South Australia 5371	912080950*	Water:Sewerage:SA:[kL]	SA Water	kL
<b>Roseworthy Campus - Non-Specific</b>	Roseworthy Campus The University of Adelaide Roseworthy South Australia 5371	9120812012	Water:RecycledWater:[kL]	SA Water	kL
<b>Roseworthy Campus - Non-Specific</b>	Roseworthy Campus The University of Adelaide Roseworthy South Australia 5371	9120812012	Water:PotableWater:SA:[kL]	SA Water	kL
<b>Roseworthy Campus - Non-Specific</b>	Roseworthy Campus The University of Adelaide Roseworthy South Australia 5371	9120812012	Water:Sewerage:SA:[kL]	SA Water	kL
<b>Rural Health - Non-Specific</b>	Rural Health Adelaide South Australia 5000	6042995904	Water:RecycledWater:[kL]	SA Water	kL
<b>Rural Health - Non-Specific</b>	Rural Health Adelaide South Australia 5000	6042995904	Water:PotableWater:SA:[kL]	SA Water	kL
<b>Rural Health - Non-Specific</b>	Rural Health Adelaide South Australia 5000	6042995904	Water:Sewerage:SA:[kL]	SA Water	kL
<b>Thebarton Campus - Non-specific</b>	35-37 Striling Street Thebarton South Australia 5031	2160446000	Water:RecycledWater:[kL]	SA Water	kL
<b>Thebarton Campus - Non-specific</b>	35-37 Striling Street Thebarton South Australia 5031	2160446000	Water:OtherWater:[kL]	SA Water	kL
<b>Thebarton Campus - Non-specific</b>	35-37 Striling Street Thebarton South Australia 5031	2160446000	Water:PotableWater:SA:[kL]	SA Water	kL
<b>Thebarton Campus - Non-specific</b>	35-37 Striling Street Thebarton South Australia 5031	2160446000	Water:Sewerage:SA:[kL]	SA Water	kL
<b>U13/84 Barry Street</b>	U13/84 Barry Street Port Augusta South Australia 5700	6614109008	Water:RecycledWater:[kL]	SA Water	kL

<b>U13/84 Barry Street</b>	U13/84 Barry Street Port Augusta South Australia 5700	6614109008	Water:OtherWater:[kL]	SA Water	kL
<b>U13/84 Barry Street</b>	U13/84 Barry Street Port Augusta South Australia 5700	6614109008	Water:PotableWater:SA:[kL]	SA Water	kL
<b>U13/84 Barry Street</b>	U13/84 Barry Street Port Augusta South Australia 5700	6614109008	Water:Sewerage:SA:[kL]	SA Water	kL
<b>Waite Campus - Non-Specific</b>	Waite Road Urrbrae South Australia 5064	813544005	Water:RecycledWater:[kL]	SA Water	kL
<b>Waite Campus - Non-Specific</b>	Waite Road Urrbrae South Australia 5064	813544005	Water:OtherWater:[kL]	SA Water	kL
<b>Waite Campus - Non-Specific</b>	Waite Road Urrbrae South Australia 5064	813544005	Water:PotableWater:SA:[kL]	SA Water	kL
<b>Waite Campus - Non-Specific</b>	Waite Road Urrbrae South Australia 5064	813544005	Water:Sewerage:SA:[kL]	SA Water	kL
<b>Waite Campus - Non-Specific</b>	Waite Road Urrbrae South Australia 5064	813546633	Water:RecycledWater:[kL]	SA Water	kL
<b>Waite Campus - Non-Specific</b>	Waite Road Urrbrae South Australia 5064	813546633	Water:OtherWater:[kL]	SA Water	kL
<b>Waite Campus - Non-Specific</b>	Waite Road Urrbrae South Australia 5064	813546633	Water:PotableWater:SA:[kL]	SA Water	kL
<b>Waite Campus - Non-Specific</b>	Waite Road Urrbrae South Australia 5064	813546633	Water:Sewerage:SA:[kL]	SA Water	kL
<b>Waite Campus - Non-Specific</b>	Waite Road Urrbrae South Australia 5064	813546668	Water:RecycledWater:[kL]	SA Water	kL
<b>Waite Campus - Non-Specific</b>	Waite Road Urrbrae South Australia 5064	813546668	Water:OtherWater:[kL]	SA Water	kL
<b>Waite Campus - Non-Specific</b>	Waite Road Urrbrae South Australia 5064	813546668	Water:PotableWater:SA:[kL]	SA Water	kL
<b>Waite Campus - Non-Specific</b>	Waite Road Urrbrae South Australia 5064	813546668	Water:Sewerage:SA:[kL]	SA Water	kL
<b>Waite Campus - Non-Specific</b>	Waite Road Urrbrae South Australia 5064	813547011	Water:RecycledWater:[kL]	SA Water	kL
<b>Waite Campus - Non-Specific</b>	Waite Road Urrbrae South Australia 5064	813547011	Water:OtherWater:[kL]	SA Water	kL
<b>Waite Campus - Non-Specific</b>	Waite Road Urrbrae South Australia 5064	813547011	Water:PotableWater:SA:[kL]	SA Water	kL
<b>Waite Campus - Non-Specific</b>	Waite Road Urrbrae South Australia 5064	813547011	Water:Sewerage:SA:[kL]	SA Water	kL
<b>Waite Campus - Non-Specific</b>	Waite Road Urrbrae South Australia 5064	813547134	Water:RecycledWater:[kL]	SA Water	kL

<b>Waite Campus - Non-Specific</b>	Waite Road Urrbrae South Australia 5064	813547134	Water:OtherWater:[kL]	SA Water	kL
<b>Waite Campus - Non-Specific</b>	Waite Road Urrbrae South Australia 5064	813547134	Water:PotableWater:SA:[kL]	SA Water	kL
<b>Waite Campus - Non-Specific</b>	Waite Road Urrbrae South Australia 5064	813547134	Water:Sewerage:SA:[kL]	SA Water	kL
<b>Waite Campus - Non-Specific</b>	Waite Road Urrbrae South Australia 5064	813548006	Water:RecycledWater:[kL]	SA Water	kL
<b>Waite Campus - Non-Specific</b>	Waite Road Urrbrae South Australia 5064	813548006	Water:OtherWater:[kL]	SA Water	kL
<b>Waite Campus - Non-Specific</b>	Waite Road Urrbrae South Australia 5064	813548006	Water:PotableWater:SA:[kL]	SA Water	kL
<b>Waite Campus - Non-Specific</b>	Waite Road Urrbrae South Australia 5064	813548006	Water:Sewerage:SA:[kL]	SA Water	kL
<b>Waite Campus - Non-Specific</b>	Waite Road Urrbrae South Australia 5064	813456507	Water:RecycledWater:[kL]	SA Water	kL
<b>Waite Campus - Non-Specific</b>	Waite Road Urrbrae South Australia 5064	813456507	Water:OtherWater:[kL]	SA Water	kL
<b>Waite Campus - Non-Specific</b>	Waite Road Urrbrae South Australia 5064	813456507	Water:PotableWater:SA:[kL]	SA Water	kL
<b>Waite Campus - Non-Specific</b>	Waite Road Urrbrae South Australia 5064	813456507	Water:Sewerage:SA:[kL]	SA Water	kL
<b>Waite Campus - Non-Specific</b>	Waite Road Urrbrae South Australia 5064	813544013	Water:RecycledWater:[kL]	SA Water	kL
<b>Waite Campus - Non-Specific</b>	Waite Road Urrbrae South Australia 5064	813544013	Water:OtherWater:[kL]	SA Water	kL
<b>Waite Campus - Non-Specific</b>	Waite Road Urrbrae South Australia 5064	813544013	Water:PotableWater:SA:[kL]	SA Water	kL
<b>Waite Campus - Non-Specific</b>	Waite Road Urrbrae South Australia 5064	813544013	Water:Sewerage:SA:[kL]	SA Water	kL
<b>Waite Campus - Non-Specific</b>	Waite Road Urrbrae South Australia 5064	813548014	Water:RecycledWater:[kL]	SA Water	kL
<b>Waite Campus - Non-Specific</b>	Waite Road Urrbrae South Australia 5064	813548014	Water:OtherWater:[kL]	SA Water	kL
<b>Waite Campus - Non-Specific</b>	Waite Road Urrbrae South Australia 5064	813548014	Water:PotableWater:SA:[kL]	SA Water	kL
<b>Waite Campus - Non-Specific</b>	Waite Road Urrbrae South Australia 5064	813548014	Water:Sewerage:SA:[kL]	SA Water	kL
<b>West Beach Sports Grounds</b>	652 Burbridge Road West Beach South Australia 5024	2133158740	Water:RecycledWater:[kL]	SA Water	kL

<b>West Beach Sports Grounds</b>	652 Burbridge Road West Beach South Australia 5024	2133158740	Water:OtherWater:[k L]	SA Water	kL
<b>West Beach Sports Grounds</b>	652 Burbridge Road West Beach South Australia 5024	2133158740	Water:PotableWater: SA:[kL]	SA Water	kL
<b>West Beach Sports Grounds</b>	652 Burbridge Road West Beach South Australia 5024	2133158740	Water:Sewerage:SA: [kL]	SA Water	kL
<b>West Beach Sports Grounds</b>	652 Burbridge Road West Beach South Australia 5024	212199870*	Water:RecycledWater: r:[kL]	SA Water	kL
<b>West Beach Sports Grounds</b>	652 Burbridge Road West Beach South Australia 5024	212199870*	Water:OtherWater:[k L]	SA Water	kL
<b>West Beach Sports Grounds</b>	652 Burbridge Road West Beach South Australia 5024	212199870*	Water:PotableWater: SA:[kL]	SA Water	kL
<b>West Beach Sports Grounds</b>	652 Burbridge Road West Beach South Australia 5024	212199870*	Water:Sewerage:SA: [kL]	SA Water	kL
<b>1/26 Roberts Terrace</b>	1/26 Roberts Terrace Whyalla South Australia 5600	8540483003		SA Water	
<b>10 Pulteney St</b>	North Terrace Adelaide South Australia 5005	50066164		Veolia	
<b>5/25 Tenth Street</b>	5/25 Tenth Street Bowden South Australia 5007	2001145465			
<b>55-77 King William Rd</b>	55-77 King William Rd Adelaide SA 5000	5002		Collier's Internatio nal	
<b>55-77 King William Rd</b>	55-77 King William Rd Adelaide SA 5000	7050		Collier's Internatio nal	
<b>AHMS</b>	100 North Terrace Adelaide South Australia 5000	50062587		Veolia	
<b>CBD Buildings - Non-specific</b>	CBD Buildings - Non- specific Adelaide SA 5000	50077848			
<b>Flinders Chase</b>	Flinders Chase Flinders Chase South Australia 5223	2001453485			
<b>ISS - Adel Uni - RL Casual 77 King William Street, ADELAIDE SA 5000</b>	ISS - Adel Uni - RL Casual  77 King William Street, ADELAIDE SA 5000	50075250			
<b>ISS Facility Services Australia Limited</b>	North Terrace, ADELAIDE SA 5000	50073806			
<b>ISS Roseworthy Organics Adel Uni Roseworthy Campus, ROSEWORTHY SA 5371</b>	ISS Roseworthy Organics  Adel Uni Roseworthy Campus, ROSEWORTHY SA 5371	50075314			
<b>National Wine Centre</b>	Cnr Botanic and Hackney Road Adelaide South Australia 5000	50048449		Veolia	

North Terrace Campus - Non-Specific	North Terrace Adelaide South Australia 5005	50049592		Veolia	
North Terrace Campus - Non-Specific	North Terrace Adelaide South Australia 5005	50048544		Veolia	
North Terrace Campus - Non-Specific	North Terrace Adelaide South Australia 5005	50048572		Veolia	
North Terrace Campus - Non-Specific	North Terrace Adelaide South Australia 5005	50057519		Veolia	
North Terrace Campus - Non-Specific	North Terrace Adelaide South Australia 5005	50048460		Veolia	
North Terrace Campus - Non-Specific	North Terrace Adelaide South Australia 5005	50048471		Veolia	
North Terrace Campus - Non-Specific	North Terrace Adelaide South Australia 5005	50048543		Veolia	
North Terrace Campus - Non-Specific	North Terrace Adelaide South Australia 5005	50048816		Veolia	
North Terrace Campus - Non-Specific	North Terrace Adelaide South Australia 5005	E-Waste		Not specified	
North Terrace Campus - Non-Specific	North Terrace Adelaide South Australia 5005	Refrigerant R409a		Not specified	
North Terrace Campus - Non-Specific	North Terrace Adelaide South Australia 5005	Refrigerant SP34e		Not specified	
North Terrace Campus - Non-Specific	North Terrace Adelaide South Australia 5005	50069134		Veolia	
North Terrace Campus - Non-Specific	North Terrace Adelaide South Australia 5005	UofA_NT_Grounds Waste_Landfill			
North Terrace Campus - Non-Specific	North Terrace Adelaide South Australia 5005	UofA_NT_Grounds Waste_Organic			
North Terrace Campus - Non-Specific	North Terrace Adelaide South Australia 5005	UofA_NT_Grounds Waste_Comingled			
North Terrace Campus - Non-Specific	North Terrace Adelaide South Australia 5005	5792 3264_			
North Terrace Campus - Non-Specific	North Terrace Adelaide South Australia 5005	5387 8140			
North Terrace Campus - Non-Specific	North Terrace Adelaide South Australia 5005	6054 3356			
North Terrace Campus - Non-Specific	North Terrace Adelaide South Australia 5005	UniAdl:BOC			
North Terrace Campus - Non-Specific	North Terrace Adelaide South Australia 5005	UniAdl:ITEquip			

North Terrace Campus - Non-Specific	North Terrace Adelaide South Australia 5005	UniAdl:Cleaning			
North Terrace Campus - Non-Specific	North Terrace Adelaide South Australia 5005	UniAdl:FoodAndCaterin g			
North Terrace Campus - Non-Specific	North Terrace Adelaide South Australia 5005	UniAdl:DomesticAccom m			
North Terrace Campus - Non-Specific	North Terrace Adelaide South Australia 5005	UniAdl:InternatAccomm			
North Terrace Campus - Non-Specific	North Terrace Adelaide South Australia 5005	UniAdl:Taxis			
North Terrace Campus - Non-Specific	North Terrace Adelaide South Australia 5005	UniAdl:RideShare			
North Terrace Campus - Non-Specific	North Terrace Adelaide South Australia 5005	UniAdl:PostFreight			
OEH Lab, Public Health - Uni of Adelaide 28 Anderson Street, THEBARTON SA 5031	OEH Lab, Public Health - Uni of Adelaide  28 Anderson Street, THEBARTON SA 5031	50075394			
Purchased Paper	University of Adelaide Adelaide SA 5000	Uni of Adelaide Purchased Paper		Winc Australia	
Reid Street 2 - IPAS	35-37 Striling Street Thebarton South Australia 5031	SAAAAAE803		Not specified	
Research Road Field Station - Ag, Food & Wine	112 Research Road Sandergrove SA 5255	9127625009		SA Water	
Research Road Field Station - Ag, Food & Wine	112 Research Road Sandergrove SA 5255	2001778522			
Roseworthy Campus - Non-Specific	Roseworthy Campus The University of Adelaide Roseworthy South Australia 5371	50048547		Veolia	
Roseworthy Campus - Non-Specific	Roseworthy Campus The University of Adelaide Roseworthy South Australia 5371	50049616		Veolia	
Roseworthy Campus - Non-Specific	Roseworthy Campus The University of Adelaide Roseworthy South Australia 5371	50048511		Veolia	
Roseworthy Campus - Non-Specific	Roseworthy Campus The University of Adelaide Roseworthy South Australia 5371	50051241		Veolia	
Roseworthy Campus - Non-Specific	Roseworthy Campus The University of Adelaide Roseworthy South Australia 5371	50048530		Veolia	

<b>Roseworthy Campus - Non-Specific</b>	Roseworthy Campus The University of Adelaide Roseworthy South Australia 5371	50053906		Veolia	
<b>Roseworthy Campus - Non-Specific</b>	Roseworthy Campus The University of Adelaide Roseworthy South Australia 5371	50048819		Veolia	
<b>Roseworthy Campus - Non-Specific</b>	Roseworthy Campus The University of Adelaide Roseworthy South Australia 5371	Roseworthy R22		Not specified	
<b>Roseworthy Campus - Non-Specific</b>	Roseworthy Campus The University of Adelaide Roseworthy South Australia 5371	Roseworthy R134a		Not specified	
<b>Roseworthy Campus - Non-Specific</b>	Roseworthy Campus The University of Adelaide Roseworthy South Australia 5371	Roseworthy R404a		Not specified	
<b>Roseworthy Campus - Non-Specific</b>	Roseworthy Campus The University of Adelaide Roseworthy South Australia 5371	Roseworthy R410A		Not specified	
<b>Roseworthy Campus - Non-Specific</b>	Roseworthy Campus The University of Adelaide Roseworthy South Australia 5371	Biobin_Organic Waste		Not specified	
<b>Roseworthy Campus - Non-Specific</b>	Roseworthy Campus The University of Adelaide Roseworthy South Australia 5371	UofA_RW_Grounds Waste_Organics			
<b>Roseworthy Campus - Non-Specific</b>	Roseworthy Campus The University of Adelaide Roseworthy South Australia 5371	UniAdl:Livestock			
<b>Rundle Mall Plaza</b>	50 Rundle Mall Plaza Adelaide SA 5005	50067564			
<b>Student Accommodation - Non-Specific</b>	The University of Adelaide Adelaide South Australia 5000	5510532377			
<b>The Palace</b>	23 Winwood Street, Thebarton Thebarton SA 5031	31851		Collier's Internatio nal	
<b>The Pillbox</b>	37 Winwood Street Thebarton SA 5031	31850		Collier's Internatio nal	
<b>Thebarton Campus - Non-specific</b>	35-37 Striling Street Thebarton South Australia 5031	SAAAAAB080			
<b>Thebarton Campus - Non-specific</b>	35-37 Striling Street Thebarton South Australia 5031	SAAAAAE001			

<b>Thebarton Campus - Non-specific</b>	35-37 Strling Street Thebarton South Australia 5031	50068176		Veolia	
<b>Vet School</b>	Roseworthy Campus The University of Adelaide Roseworthy South Australia 5371	50048546		Veolia	
<b>Vet School</b>	Roseworthy Campus The University of Adelaide Roseworthy South Australia 5371	UofA_RW_Vet School BioBin			
<b>Waite Campus - Non-Specific</b>	Waite Road Urrbrae South Australia 5064	50052649		Veolia	
<b>Waite Campus - Non-Specific</b>	Waite Road Urrbrae South Australia 5064	50049664		Veolia	
<b>Waite Campus - Non-Specific</b>	Waite Road Urrbrae South Australia 5064	50048545		Veolia	
<b>Waite Campus - Non-Specific</b>	Waite Road Urrbrae South Australia 5064	50048574		Veolia	
<b>Waite Campus - Non-Specific</b>	Waite Road Urrbrae South Australia 5064	50048493		Veolia	
<b>Waite Campus - Non-Specific</b>	Waite Road Urrbrae South Australia 5064	50048474		Veolia	
<b>Waite Campus - Non-Specific</b>	Waite Road Urrbrae South Australia 5064	50048570		Veolia	
<b>Waite Campus - Non-Specific</b>	Waite Road Urrbrae South Australia 5064	UofA_WC_Refrigerants		Not specified	
<b>Waite Campus - Non-Specific</b>	Waite Road Urrbrae South Australia 5064	50048818		Veolia	
<b>Waite Campus - Non-Specific</b>	Waite Road Urrbrae South Australia 5064	50063519		Veolia	
<b>Waite Campus - Non-Specific</b>	Waite Road Urrbrae South Australia 5064	Waite R22		Not specified	
<b>Waite Campus - Non-Specific</b>	Waite Road Urrbrae South Australia 5064	Waite R134a		Not specified	
<b>Waite Campus - Non-Specific</b>	Waite Road Urrbrae South Australia 5064	Waite R404a		Not specified	
<b>Waite Campus - Non-Specific</b>	Waite Road Urrbrae South Australia 5064	Waite R409a		Not specified	
<b>Waite Campus - Non-Specific</b>	Waite Road Urrbrae South Australia 5064	Waite R410A		Not specified	
<b>Waite Campus - Non-Specific</b>	Waite Road Urrbrae South Australia 5064	UofA_WT_Grounds Waste_Organics			

<b>West Beach Sports Grounds</b>	652 Burbridge Road West Beach South Australia 5024	UofA_West Beach_Grounds Waste_Landfill			
<b>Women's and Childrens Hospital 72 King William Road, NORTH ADELAIDE SA 5006</b>	Women's and Childrens Hospital  72 King William Road, NORTH ADELAIDE SA 5006	50073540			