

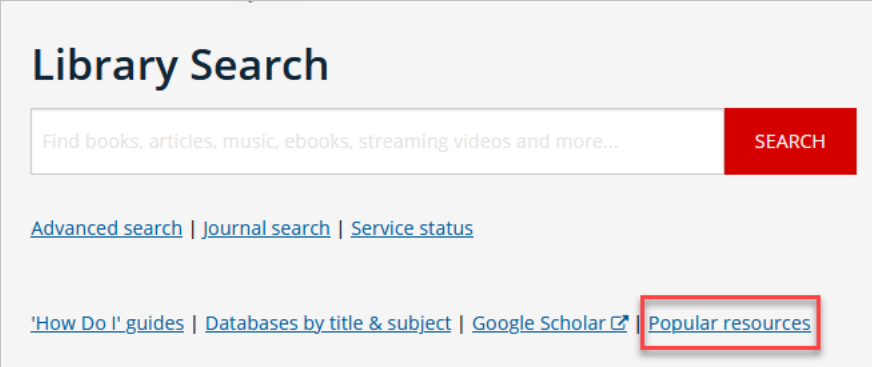
Analysis of author outputs using Scopus

Introduction

This guide will enable you to easily generate up-to-date statistics on your, or another's research performance and impact. This information is useful for quickly generating information for CV's, grant applications or academic profiles.

Access Scopus

1. Go to the Library Home Page at <https://www.adelaide.edu.au/library/>
2. Select **Popular resources**.

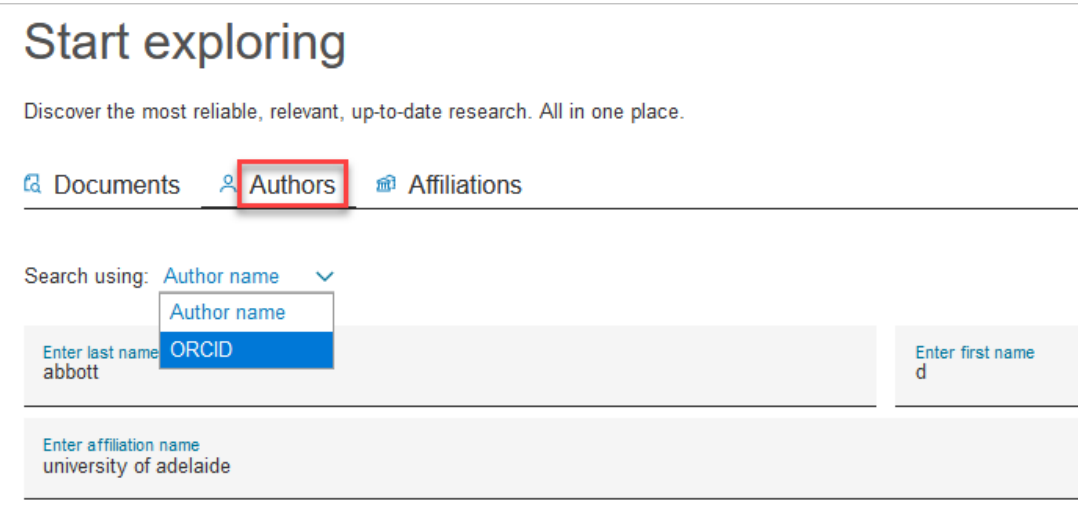


The screenshot shows the 'Library Search' interface. It features a search bar with the placeholder text 'Find books, articles, music, ebooks, streaming videos and more...' and a red 'SEARCH' button. Below the search bar are links for 'Advanced search', 'Journal search', and 'Service status'. At the bottom, there are links for 'How Do I' guides, 'Databases by title & subject', 'Google Scholar', and 'Popular resources', with the latter highlighted by a red box.

3. Select **Scopus**, login with your University login details.

Part 1. Find an author's publications

1. Select ORCID if the ORCID is up to date with publications.
2. Otherwise, choose Author name to search by name.
3. Results can be filtered by Affiliation, if useful.



The screenshot shows the 'Start exploring' section of the Scopus search interface. It includes the text 'Discover the most reliable, relevant, up-to-date research. All in one place.' and three search options: 'Documents', 'Authors' (highlighted with a red box), and 'Affiliations'. Below this, there is a dropdown menu for 'Search using:' with 'Author name' selected. There are input fields for 'Enter last name' (with 'abbott' entered), 'ORCID', and 'Enter first name' (with 'd' entered). At the bottom, there is an input field for 'Enter affiliation name' (with 'university of adelaide' entered).

- On the author results page, documents by author are grouped together automatically. Each group of documents is attached to an Author ID and should link together all of the output of an author in Scopus.

However, an author's output can sometimes be split across more than one Author ID or different author's works can get connected to the same Author ID. Click on the documents listed against each author's name to check if the author is the same person. A request can be sent to Scopus to merge profiles or to remove incorrect documents from a profile.

- Select the author or authors and click on **Show documents**.

Note: If there is only one match for the author in the author results list, click on the name of the author and go to the author details page.

	Author	Documents	h-index	Affiliation	City	Country/Territory
1	Abbott, Derek A. Abbott, D. Abbott, Catherine A. Abbot, Derek	806	65	The University of Adelaide	Adelaide	Australia
2	Abbott, Derek Abbott, D.	2	0	The University of Adelaide	Adelaide	Australia
3	Abbott, Derek	1	0	The University of Adelaide	Adelaide	Australia
4	Abbott, Derek	1	0	The University of Adelaide	Adelaide	Australia

- You now have a list of all publications by the author in Scopus. You can: a) view a citation overview, b) analyse search results, c) view authors citing the publications and also sort by number of citations or first author.

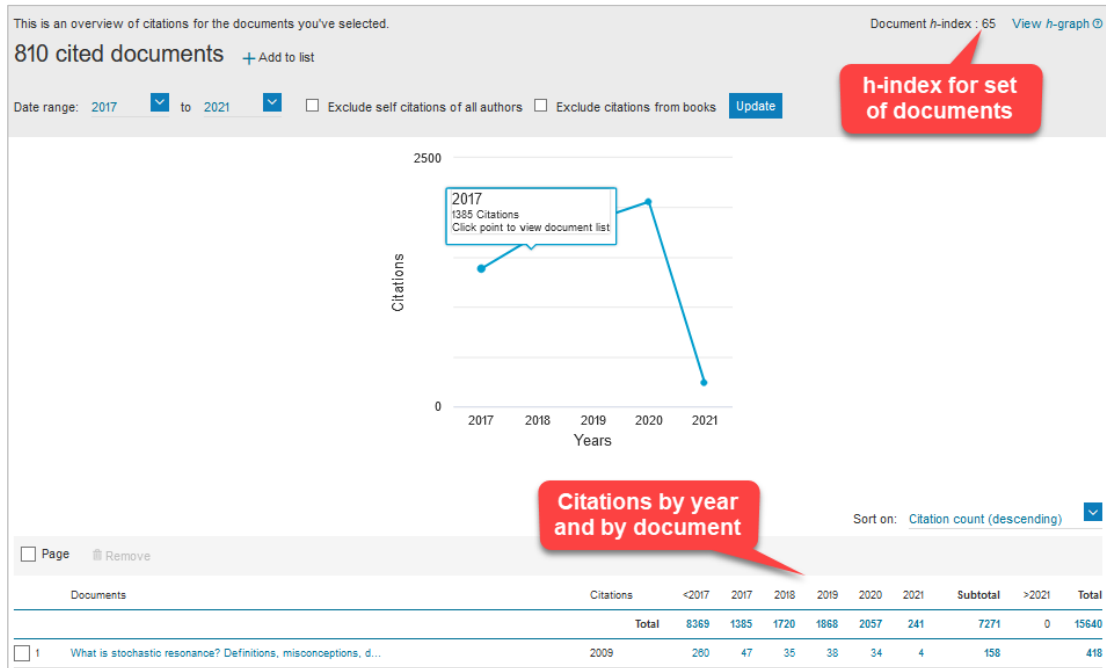
	Document title	Authors	Year
1	Transcranial Low-Intensity Pulsed Ultrasound Stimulation Induces Neuronal Autophagy	Huang, X., Niu, L., Meng, L., (...), Abbott, D., Zheng, H.	2021
2	Corrigendum to "Tunable localized surface plasmon graphene	Islam, M.S., Sultana,	2021 Carbon

Analyse author results

a

View citation overview shows:

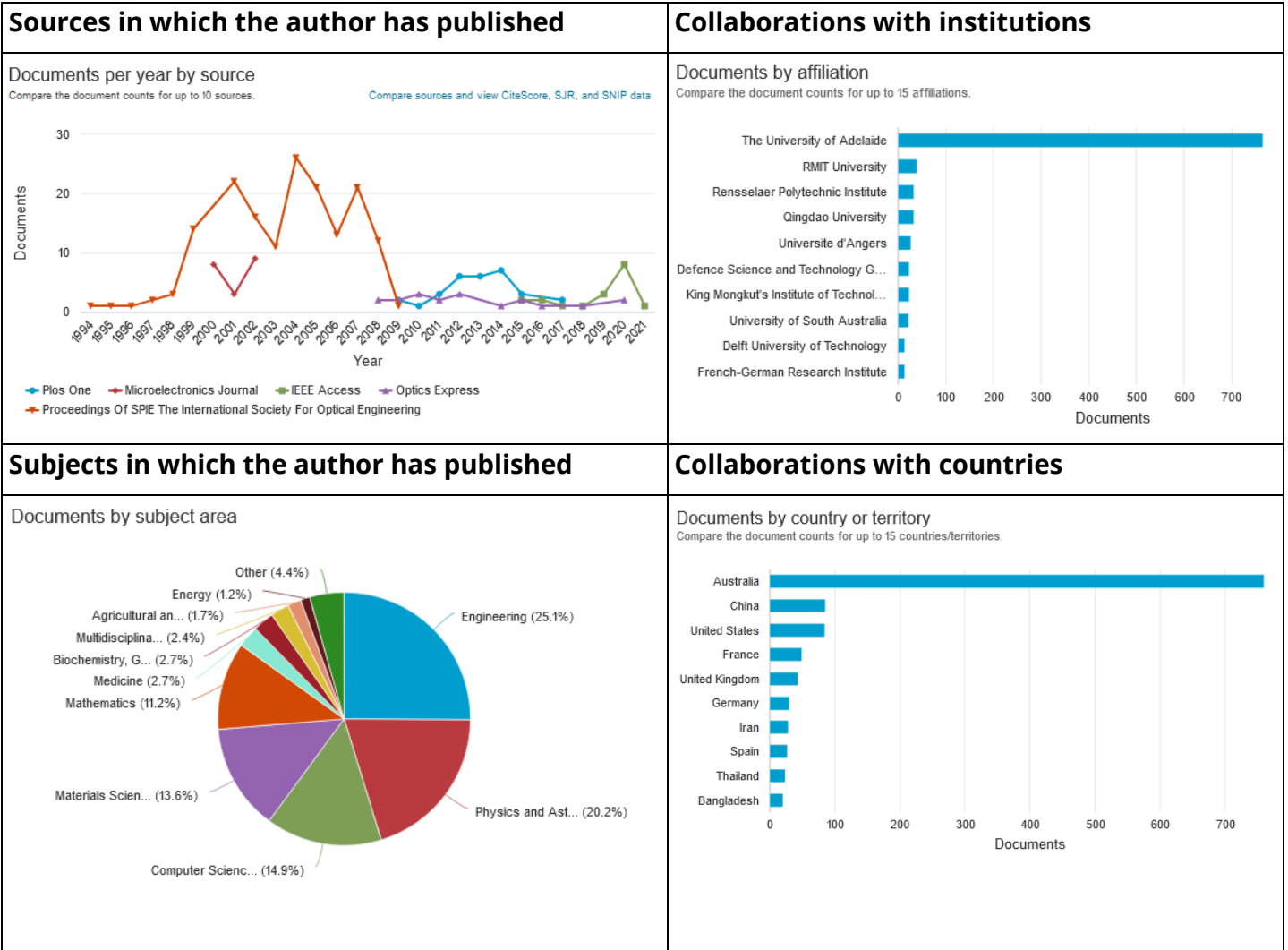
- **Total number of citations by year and by document**
- **Citations by year:** demonstrates how quickly the citations have accrued
- **h-index** for the set of documents





Analyze search results

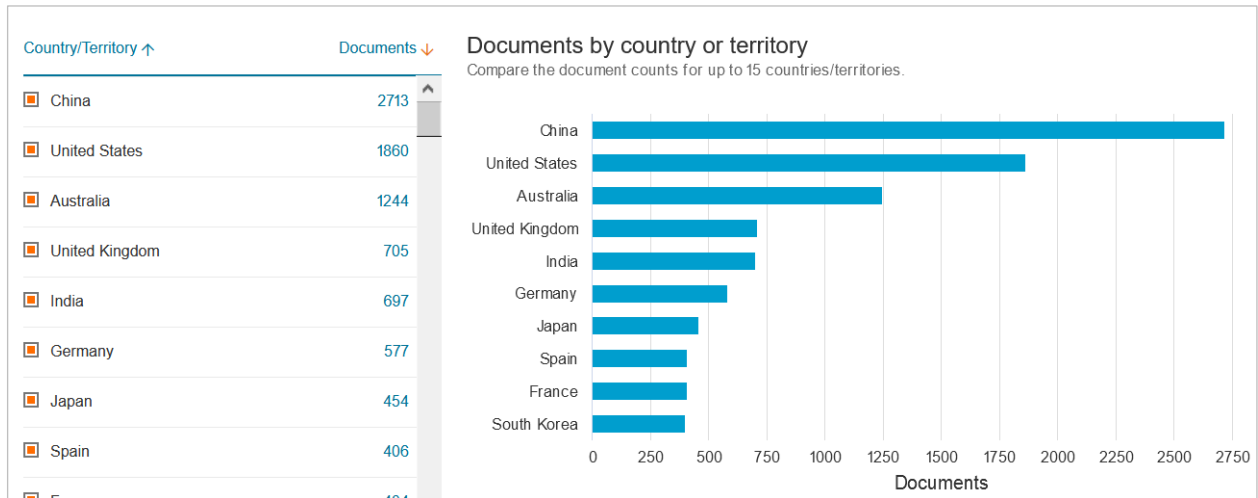
Includes the following metrics (among others)





View cited by and then select **Analyze search results** shows:

- which authors are citing the documents
- where they are from (institution, country): demonstrates international reach

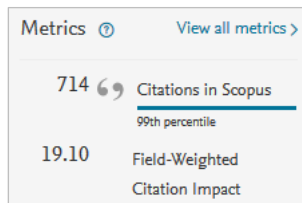


Part 2. Analyse article metrics

1. Select a document with citations, from the list of publications found in **Step 5**.

Hint: sort list by Cited by (highest)

2. The **Field-Weighted Citation Impact** compares articles with the same publication year, type and from the same discipline. A **FWCI** of 1 indicates an article is on par with the world average.



3. Field-Weighted Citation Impact for a researcher's total output, can be accessed in the SciVal database. See [Using SciVal to find a researcher and view key metrics](#)
4. Select **View all metrics** to see the metrics details for an article.

Citation benchmarking shows how citations received by this article compare with the average for similar articles. 99th percentile is high, and indicates an article in the top 1% globally.

More help

Scopus Support Centre <https://service.elsevier.com/app/overview/scopus/>

Contact Us For further support or questions, please email the Liaison Librarians at: liaisonlibs@adelaide.edu.au