

Lab-RSD Task
Bone, Joints and Movement

This Lab-RSD Task is based on Activities from Laboratory Sessions 7 and 8. You are permitted to work with other students, as well as consult your lecture notes, textbooks and all of the resources (e.g. micrographs, display models, images, diagrams and prosections) available in the laboratory session. You will have approximately 30 minutes to complete the task. Please submit it before leaving today's laboratory session.

Figure 1

Q1 Figure 1 is an illustration of a joint.

(a) Circle the word below that best describes the type of joint shown.

Fibrous Synovial Cartilaginous

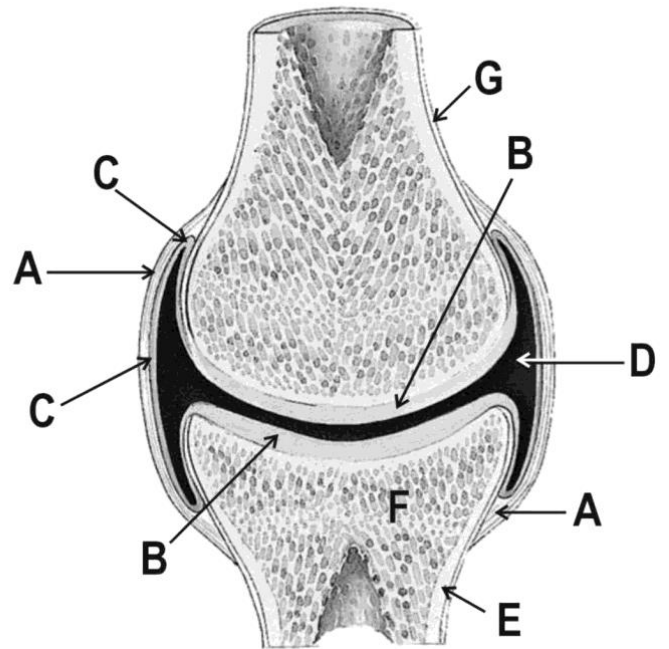
(b) Identify the joint components labeled A-D.

A =
 B =
 C =
 D =

(c) What are the roles of joint components B and D?

B =

 D =



Q2 Examine the 5 light micrographs (labeled A-E) at this station showing different types of connective tissue (CT).

(a) Precisely identify each specific type of connective tissue on display, and state the location for each tissue in a joint. List the letters on Figure 1 that correspond to these locations.

Micrograph	Types of CT	Location of CT in a Joint	Letter Location
1			
2			
3			
4			
5			

- Q3** Examine the prosected joint at this station.
- (a) What body joint is displayed?
 - (b) Identify 2 additional structural features that are present in the prosected joint but are NOT seen in the joint shown in Figure 1. What is the function of each of these additional structures in the prosected joint?

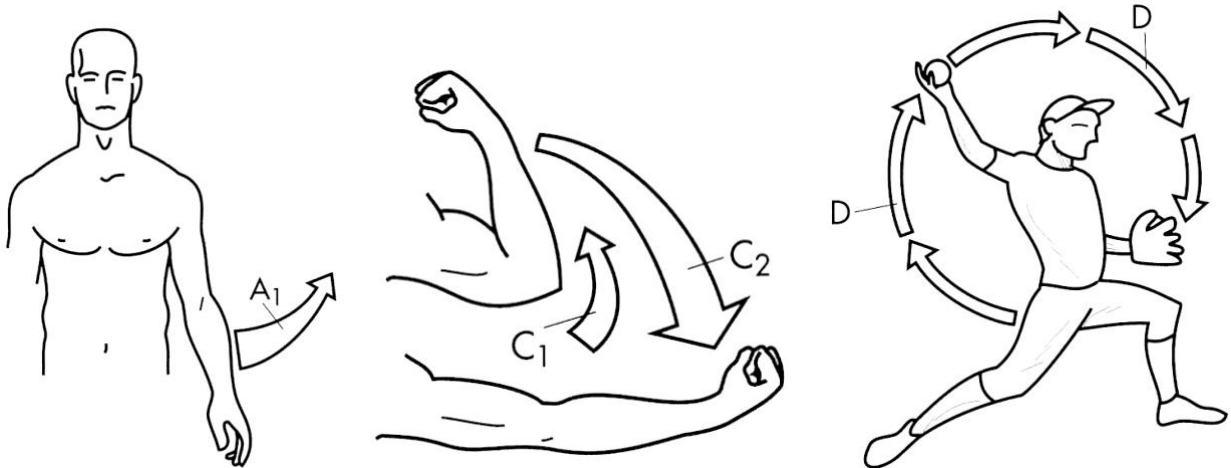
STRUCTURE 1 Name:
 Function:

STRUCTURE 2 Name:
 Function:

- Q4.** Examine Figure 2 showing different types of movement at joints.

- (a) Identify each type of movement indicated in Figure 2.
- A1: C1:
 C2: D:

Figure 2



- (b) Which of these movements is possible at the prosected joint?
- (c) Indicate the features of the prosected joint that limit the range of movements possible.

.....

- Q5.** List up to three (3) learning objectives addressed in this RSD task.

- (1)
- (2)
- (3)