

## Rankings

**1**  
NUMBER 1  
IN THE STATE

**8**  
NUMBER 8  
IN THE COUNTRY

**106**  
IN THE WORLD  
(QS World  
University Rankings)

**135**  
IN THE WORLD  
(Times Higher Education  
World University  
Rankings)

**139**  
IN THE WORLD  
(Academic Rankings  
of World Universities)

## Research income

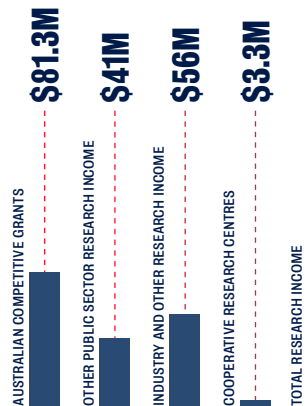
RESEARCH INCOME	2018	2017	2016
	\$'000	\$'000	\$'000
Australian Competitive Grants	81,362	70,900	75,882
Other public sector research income	41,108	39,919	36,649
Industry and other research income	55,855	53,182	46,532
Cooperative Research Centres	3,253	3,651	1,771
<b>Total University research income</b>	<b>181,579</b>	<b>167,651</b>	<b>160,835</b>

Source: DET 2016-2018 Higher Education Research Data Collection

RESEARCH BLOCK FUNDING	2019	2018	2017
	\$'000	\$'000	\$'000
Research Support Program (RSP)	39,130	41,190	42,608
Research Training Program (RTP)	46,222	46,863	46,557

Source: DET - Research Block Grants funding announcements (www.education.gov.au)

### IN 2018



**\$181.6M**

## Finance

SUMMARY STATEMENT OF COMPREHENSIVE INCOME	Consolidated			University		
	2018	2017	2016	2018	2017	2016
	\$'000	\$'000	\$'000	\$'000	\$'000	\$'000

### Operating revenue

Received under HE Support Act	285,002	284,147	297,600	285,002	284,147	297,600
Learning and teaching	277,040	257,834	234,420	277,040	257,834	234,420
Research grants and fees	178,125	174,795	195,796	175,661	167,354	173,163
Research - other	91,886	91,702	90,999	91,886	91,702	90,999
Other	101,284	138,408	128,473	85,413	128,173	98,348
<b>Total operating revenue</b>	<b>933,437</b>	<b>946,886</b>	<b>947,288</b>	<b>915,102</b>	<b>929,210</b>	<b>894,530</b>

### Operating expenses

Salaries, superannuation and related expenses	516,752	508,719	497,611	507,361	499,006	486,152
Non salary expenses	420,975	382,682	388,769	411,564	365,374	348,141
<b>Total operating expenses</b>	<b>937,727</b>	<b>891,381</b>	<b>886,380</b>	<b>918,925</b>	<b>864,380</b>	<b>834,293</b>

### Operating result

Total	-4,290	55,505	60,908	-3,823	64,830	60,237
Operating margin	-0.5%	5.9%	6.4%	-0.4%	7.0%	6.7%

### SUMMARY STATEMENT OF FINANCIAL POSITION

Total assets	1,988,531	1,973,177	1,925,789	1,985,023	1,968,826	1,925,359
Total liabilities	361,380	347,792	356,487	358,434	344,248	358,867
<b>Net assets</b>	<b>1,627,151</b>	<b>1,625,385</b>	<b>1,569,302</b>	<b>1,626,589</b>	<b>1,624,578</b>	<b>1,566,492</b>

### CASH AND BANK TERM INVESTMENTS

Total	53,088	46,072	52,146	49,048	42,245	47,422
-------	--------	--------	--------	--------	--------	--------

Source: University of Adelaide Annual Report 2017 & 2018

### NET ASSETS (\$'000)



## FOR FURTHER ENQUIRIES

Planning and Analytics  
The University of Adelaide SA 5005 Australia

[www.adelaide.edu.au/planning](http://www.adelaide.edu.au/planning)

EMAIL [stratplan@adelaide.edu.au](mailto:stratplan@adelaide.edu.au)

TELEPHONE +61 8 8313 6478

© The University of Adelaide. Published July 2019  
Job no. 2206-6 CRICOS 00123M

**DISCLAIMER** The information in this publication is current as at the date of printing and is subject to change. You can find updated information on our website at [adelaide.edu.au](http://adelaide.edu.au) or contact us on 1800 061 458. The University of Adelaide assumes no responsibility for the accuracy of information provided by third parties.



# 2019

## POCKET STATISTICS

## 2018 overview

**21,142**

STUDENTS (EFTSL)



**7,009**  
PROGRAM  
COMPLETIONS

**29%**

INTERNATIONAL  
STUDENTS (BY EFTSL)



**181.6**  
MILLION IN TOTAL  
RESEARCH INCOME

**3,400**  
STAFF (FTE)

**21:1**

STUDENT : STAFF RATIO\*



**49%**

LEVEL OF PROGRAM  
POSTGRADUATE RESEARCH 8%  
POSTGRADUATE COURSEWORK 18%

**51%**

BACHELOR DEGREES  
OTHER 1%

\*Based on DET methodology of onshore student EFTSL and FTE of onshore academic staff (including casuals) employed in a teaching function.

## Students

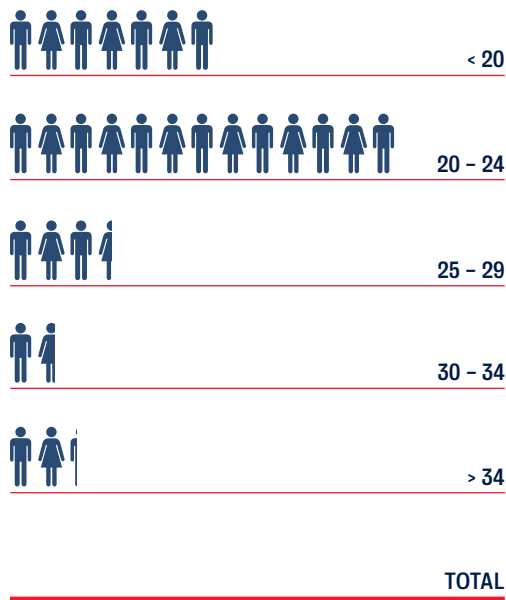
	Persons			EFTSL		
	2018	2017	2016	2018	2017	2016
<b>Total student enrolments</b>	27,094	26,924	27,312	21,142	21,141	21,452
Commencing student enrolments	10,503	10,152	10,524	7,649	7,560	7,790
Aboriginal & TS Islander students	263	280	266	177	181	185
International students – onshore	7,837	7,262	6,747	6,180	5,876	5,513
International students – offshore	33	356	667	6	212	323
<b>By level of program</b>						
Postgraduate research	2,353	2,341	2,325	1,632	1,623	1,637
Postgraduate coursework	5,113	5,010	5,038	3,380	3,419	3,418
Bachelor degrees	19,276	19,236	19,492	15,923	15,884	16,082
Other	773	764	996	206	215	315
<b>By enrolment faculty</b>						
Central areas	124	128	248	35	47	125
Arts	5,333	5,429	5,560	3,704	3,725	3,831
Engineering, Computer and Maths Sciences	5,375	5,173	5,203	4,323	4,219	4,269
Health and Medical Sciences	5,682	5,430	5,359	4,444	4,308	4,250
Professions	8,016	8,164	8,303	5,799	5,967	5,994
Sciences	3,633	3,659	3,760	2,837	2,875	2,983
<b>By campus</b>						
North Terrace (includes hospitals)	25,998	25,363	25,422	20,016	19,621	19,838
Roseworthy	785	786	744	508	499	463
Waite	868	859	857	369	370	363
Other Australian	1,150	1,733	1,921	243	436	462
Offshore	33	364	675	6	215	327
<b>By gender</b>						
Female	13,182	13,262	13,337	10,308	10,416	10,423
Male	13,907	13,657	13,971	10,832	10,721	11,026
Gender X	5	5	4	2	4	4
<b>By attendance type</b>						
Full-time	21,584	21,438	21,694	19,215	19,163	19,456
Part-time	5,510	5,486	5,618	1,927	1,979	1,996

Source: Data warehouse  
Note: International Students Onshore and Offshore headcount figures are greater than the overall International students headcount as some students study both onshore and offshore and are therefore double-counted.

## Completions

	2018	2017	2016
	<b>Total program completions</b>	7,009	6,937
<b>HDR completions</b>	400	415	405
Arts	52	72	65
Engineering, Computer and Mathematical Sciences	95	87	92
Health and Medical Sciences	92	108	101
Professions	35	35	29
Sciences	126	113	118

## Program enrolments by age group

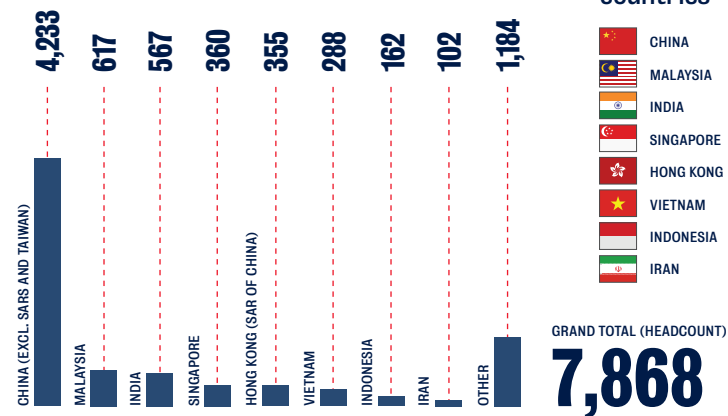


## International

100+ countries represented in student population



## PROGRAM ENROLMENTS BY COUNTRY\*



## Top 8 countries

- CHINA
- MALAYSIA
- INDIA
- SINGAPORE
- HONG KONG
- VIETNAM
- INDONESIA
- IRAN

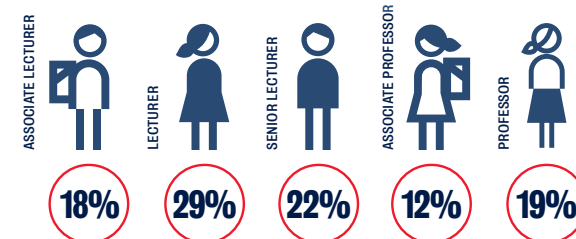
## Staff

### AS AT 31 MARCH 2018

	Persons			FTE		
	2018	2017	2016	2018	2017	2016
Total staff	3,774	3,771	3,726	3,400	3,401	3,365
<b>By type</b>						
Academic	1,639	1,667	1,625	1,456	1,481	1,458
General	2,135	2,104	2,101	1,944	1,920	1,907
<b>Academic staff by faculty</b>						
Central areas	59	53	49	55	47	42
Arts	156	161	168	145	148	157
Engineering, Computer and Maths Sciences	287	278	274	269	262	259
Health and Medical Sciences	508	535	510	411	432	422
Professions	192	196	180	173	177	164
Sciences	437	444	444	403	416	414
<b>Academic staff by function</b>						
Teaching and research	827	848	861	741	762	783
Research only	698	720	681	611	630	602
Teaching only	107	94	78	97	84	69
Other	7	5	5	8	6	5
<b>Academic staff by gender</b>						
Female	663	663	640	570	570	558
Male	976	1,004	985	886	912	900

Note: Full-time and fractional full-time staff statistics  
Source: DET 2016–2018 Higher Education Staff Data Collection

### ACADEMIC STAFF BY LEVEL (PERSONS)



Source: DET 2018 Higher Education Staff Data Collection

\* Includes onshore and offshore