



THE UNIVERSITY
of ADELAIDE



ARC LINKAGE PROJECTS

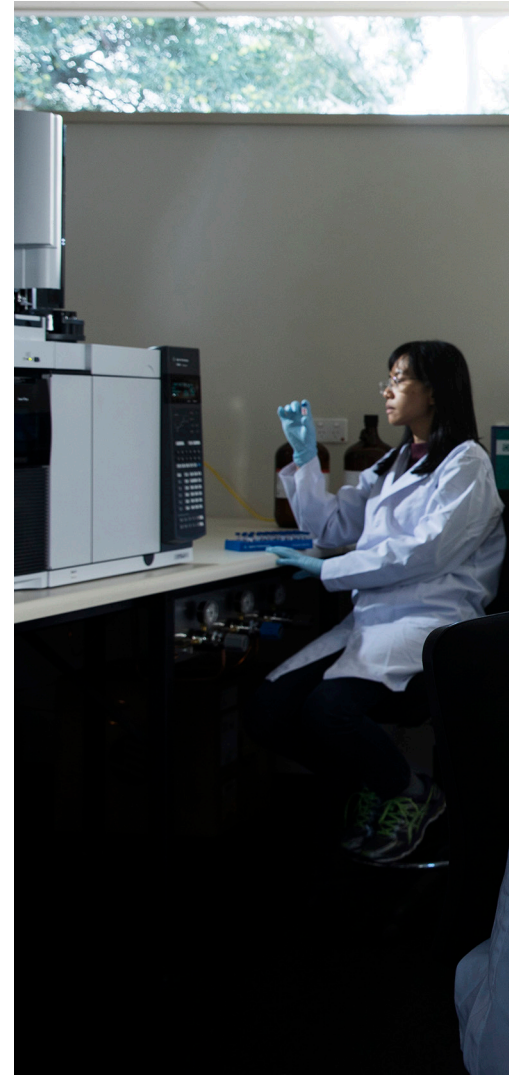
Collaborate to innovate and build
your competitive advantage

adelaide.edu.au

TOGETHER WE CAN DO MORE

Linkage Projects represent an outstanding opportunity to strategically strengthen not only your own business, but your entire industry and our broader economy—with a scale of impact no one organisation could achieve alone.

Largely funded by the Australian Research Council (ARC), with varying levels of member contributions, Linkage Projects are designed to deliver tailored R&D solutions to significant national or global industrial challenges involving risk or innovation. Collaborators from academia and the private sector work together closely on two-to-five-year projects to conduct cutting-edge research and translate it into game-changing, productivity-boosting processes, products and services.



Our world-class researchers know what ARC Linkage Project success demands

Here at the University of Adelaide, we're absolutely committed to partnering with industry, and have proven success in a number of ARC Linkage Projects. We've collaborated, and are currently collaborating, with a diverse range of organisations to strengthen their businesses and industries.

These include: South Australian Water Corporation; National Library of Australia; National Motor Museum; GM Holden Ltd; Santos Ltd; Origin Energy; Department of Environment and Water; Coopers Brewery; Trajan Scientific and Medical Pty Ltd; Motor Accident Commission; Oz Minerals Limited; and the State Theatre Company of South Australia.

We'd be delighted to share the benefits of our experience, and research expertise, with you.



**ONE HUNDRED PER CENT OF
OUR RESEARCH IS RATED
WORLD-STANDARD OR ABOVE.
IN 41 DISTINCT FIELDS, IT'S
WELL ABOVE WORLD STANDARD*.**

*Excellence in Research Australia, 2018.

REAP THE BUSINESS BENEFITS

Partnering with the University of Adelaide in an ARC Linkage Project will enable you to:

- develop cutting-edge technologies and/or manufacturing capabilities
- find innovative, multidisciplinary solutions to your current, emerging and forecast challenges
- initiate and/or strengthen a long-term strategic relationship with our University and other key players in your industry, including end users
- access our state-of-the-art research laboratories, equipment and related facilities
- build your own staff's professional and research capabilities, in line with your industry's future workforce needs
- enhance your standing as an employer of choice.

Your involvement could also qualify you for the Australian Government R&D Tax Incentive. To check your eligibility, visit: www.business.gov.au/Grants-and-Programs/Research-and-Development-Tax-Incentive

- 02 ARC funding allocations
- 02 Funding uses
- 02 Partner cash contributions
- 02 Partner in-kind contributions
- 02 Partner eligibility
- 03 Indicative ARC Linkage timeline
- 03 Intellectual property ownership
- 04 Let's talk
- 05 For further information

PROGRAM DETAILS

By bringing together the expertise, capability, skills and high-tech facilities of research and industry partners, ARC Linkage Projects drive growth, productivity and competitiveness—and build new knowledge—in the Australian economy. Applications are open continuously.



ARC funding allocations

The ARC provides \$50,000 to \$300,000 per annum for Linkage Projects. This funding is leveraged from the total combined contributions made by project Partner Organisations—including cash and in-kind—which must at least match the total ARC funding requested.

Funding uses

Project funds, from both the ARC and Partner Organisation cash contributions, must be used to support direct project costs, such as:

- eligible personnel's salaries
- equipment and consumables
- maintenance
- essential travel.

Partner cash contributions

In most cases, Partner Organisations must contribute a combined cash value of at least 25% of the requested ARC funding. Exemptions may be provided, however, for registered charities, small businesses with fewer than 20 full-time employees, start-ups, museums and herbaria.

Where Partner Organisations' cash contributions come predominantly from other government research funding sources (federal, state or territory), their combined cash contributions may only make up a maximum of 25% of the required Partner Organisation contribution.

Partner in-kind contributions

Partner Organisations' project-specific in-kind contributions can include:

- Partner Investigators' time
- access to facilities, equipment and databases
- analytical and other services
- equipment
- materials and consumables
- patents and licences
- software
- travel.

Partner eligibility

Most public, private, community, government and not-for profit organisations are eligible to be Linkage Project Partner Organisations. Overseas organisations can also participate, so long as it can be demonstrated that their involvement will bring clear benefits for Australian industry.



INDICATIVE ARC LINKAGE TIMELINE



INTELLECTUAL PROPERTY OWNERSHIP

IP arrangements in ARC Linkage Projects are negotiated on a project-by-project basis, taking into consideration each party's proposed research and contributions, and formalised in a collaborative research agreement. Here at the University of Adelaide we have considerable experience in this area, so rest assured we'll work with you to ensure all parties benefit.

LET'S TALK

If you're interested in establishing an ARC Linkage Project in collaboration with the University of Adelaide, we'd be delighted to explore any and all opportunities—and help you take the next steps.



To apply for a linkage project

Our **Research Services** team manages all ARC Linkage Project applications for the University. They can provide resources and support; review applications and project suitability; and advise on Linkage Grant Guidelines, Partner Organisation eligibility and contributions.

Email: seapgrants@adelaide.edu.au

Phone: 08 8313 6926

Website: www.adelaide.edu.au/research-services/arc-linkage-projects

To partner with us in other ways

Contact our Innovation and Commercial Partnerships (ICP) team. ICP facilitates engagement between our research community and industry or government. They can provide advice on pursuing contract research, consulting and tender opportunities, as well as additional options for research industry engagement.

Email: businessdevelopment@adelaide.edu.au

Phone: +61 8 8313 5020

Website: adelaide.edu.au/icp

To commercialise our research

Our ICP team also oversees all commercialisation of the University's intellectual property, including patenting, licensing and the formation of spin-out companies.

Email: commercialisation@adelaide.edu.au

Phone: +61 8 8313 3480

Website: adelaide.edu.au/icp



FOR FURTHER INFORMATION

Australian Research Council

www.arc.gov.au/grants/linkage-program/linkage-projects

ARC Linkage Project Grant Guidelines

arc.gov.au/grants/linkage-program/linkage-projects

Industry Growth Centres

arc.gov.au/grants/linkage-program/industrial-transformation-research-program/industry-growth-centres-initiative

Australian Government R&D Tax Incentive

business.gov.au/Grants-and-Programs/Research-and-Development-Tax-Incentive

FOR FURTHER ENQUIRIES

The University of Adelaide SA 5005 Australia

ENQUIRIES adelaide.edu.au/research-services/

TELEPHONE +61 8 8313 5137

FREE-CALL 1800 061 459

 adelaide.edu.au

 facebook.com/uniofadelaid

 twitter.com/uniofadelaid

 snapchat.com/add/uniofadelaid

 instagram.com/uniofadelaid

 [UniAdelaide_China](#)

 weibo.com/uniadelaide

© The University of Adelaide.
Published November 2019 5666-2
CRICOS 00123M

DISCLAIMER The information in this publication is current as at the date of printing and is subject to change. You can find updated information on our website at adelaide.edu.au or contact us on 1800 061 459. The University of Adelaide assumes no responsibility for the accuracy of information provided by third parties.