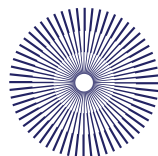


DIRECTOR, SOUTH AUSTRALIAN IMMUNOGENOMICS CANCER INSTITUTE

Information for Candidates



SAiGENCI
SOUTH AUSTRALIAN
IMMUNOGENOMICS
CANCER INSTITUTE



an alliance of
**THE UNIVERSITY
of ADELAIDE**



Government
of South Australia

Health
Central Adelaide
Local Health Network

adelaide.edu.au/jobs



MESSAGE FROM THE ADVISORY BOARD

THIS IS THE START OF AN EXCITING VENTURE, AND A UNIQUE OPPORTUNITY FOR AN ESTABLISHED INVESTIGATOR IN THE FIELD OF CANCER RESEARCH TO MAKE THEIR MARK.

Substantial Commonwealth Government support for the establishment of the South Australian Immunogenomics Cancer Institute was announced by the Federal Minister of Health the Honourable Greg Hunt in August 2019. Since then the University of Adelaide and the Central Adelaide Local Health Network have worked together to create the Foundations on which the new institute will be built by the inaugural permanent director, with the support of the board.

Our plans for the South Australian Immunogenomics Cancer Institute are ambitious. We aim to provide a focal point for cancer research in the South Australian Biomedical Precinct and through this to enable South Australian participation in the growing Australian network of cancer institutes, and national and international clinical trials partnerships. Whilst we aim to create an environment that will attract talent to South Australia, we also see this as becoming the South Australian node of the national cancer research effort: collaboration and institutional partnerships will be fundamental to our success, and will underpin the impact we aim to have on the generation of new knowledge, and its application to the benefit of patients.

Our first permanent Director will be supported by a strong, independent advisory board with exceptional experience, credentials and networks to make this happen. Similarly the institutional commitment of the University of Adelaide and the Central Adelaide Local Health Network to the new institute's success is strong and built on a deep mutual understanding of the vision underpinning the initiative. We are confident these strong partnerships will ensure the institute's success.

Professor Brandon Wainwright AM
Chair, South Australian Immunogenomics
Cancer Institute Advisory Board

Professor Anton Middelberg
Deputy Vice Chancellor (Research),
University of Adelaide

Ms Lesley Dwyer
Chief Executive Officer,
Central Adelaide Local Health Network

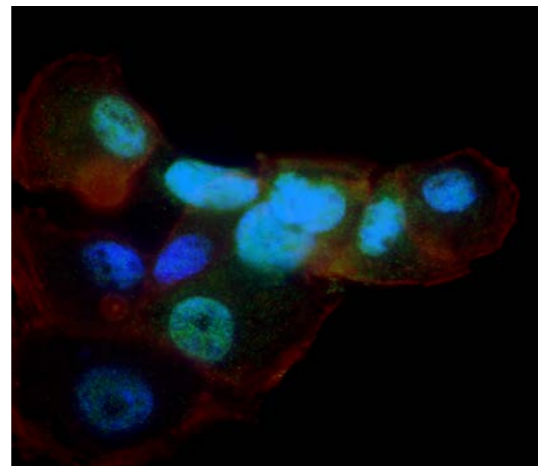
ABOUT THE INSTITUTE

Our aim is to create a focal point for co-ordinated and collaborative biomedical research, and to build world-class capacity and capability in Adelaide to maximise the chance of cancer control and cure.

The focus will be on cancer research and clinical trials, which will bring new cutting edge technologies in immunotherapies and genomics leading to better treatments and outcomes for cancer patients.

This is a new Institute, that will grow from a very small start to an estimated 160-200 investigators and associate staff within 2-3 years. The initial funding basis for the institute is a Commonwealth Funding Deed providing \$80m to the University of Adelaide for the four years from July 2020 to June 2024. The deed's purpose is:

“to support co-ordinated and collaborative biomedical research, attract and retain talent to South Australia and to build world class capacity and capability to maximise the chance of cancer control and cure. The focus will be on cancer research and clinical trials, which will bring new cutting edge technologies in immunotherapies and genomics leading to better treatments and outcomes for cancer patients.”



The institute will be physically situated in University of Adelaide facilities in the Adelaide Biomedical City, one of the largest health and life sciences precincts for research, education and clinical care in the Southern Hemisphere.



an alliance of



ADVISORY BOARD

The Advisory Board of the South Australian Immunogenomics Cancer Institute is chaired by **Professor Brandon Wainwright AM**, former Director of the University of Queensland's Institute for Molecular Bioscience. The board's members are:

Ms Anna-Maria Arabia
Chief Executive of the Australian Academy of Science, Canberra

Ms Lesley Dwyer
Chief Executive Officer Central Adelaide Local Health Network

Professor Michelle Haber AM
FAA, Executive Director, Children's Cancer Institute, Sydney

Professor Doug Hilton, AO
FAA: Director, Walter & Eliza Hall Institute, Melbourne

Mr Gaby Jaksa
Adelaide based commercial lawyer and consultant, former Deputy Crown Solicitor

Professor Ricky Johnstone FAA
Executive Director, Cancer Research, Peter MacCallum Cancer Centre, Melbourne

Professor Benjamin Kile FAHMS
Executive Dean, Faculty of Health and Medical Sciences, University of Adelaide

Professor Anton Middelberg FTSA
Deputy Vice Chancellor and Vice President (Research), University of Adelaide

THE PARTNERS

The Central Adelaide Local Health Network has an important role in improving the health and wellbeing of South Australians by delivering world-class integrated healthcare and general and quaternary hospital services. CALHN has a strong commitment to the delivery of clinical services in an environment that is supportive of, and informed by research across all disciplines. CALHN's involvement as an alliance partner in SAiGENCI is fundamental to the new institute's approach to building strong collaborative links between the clinical and research communities in Adelaide, and to delivering the best possible treatments and care to South Australian cancer patients.

The University of Adelaide is South Australia's Group-of-Eight research intensive university, with a mission to take an international leadership role in cancer research and innovation, and to support continuous improvements in health care delivery for those who battle cancer. In hosting SAiGENCI, the University of Adelaide has made a strong, long term commitment to the collaborative creation of an ecosystem that will attract and retain biomedical and clinical research talent, clinical academic leadership and world-leading cancer research capability to South Australia.

A microscopic view of several cancer cells, characterized by their irregular, spiky, and textured surfaces. The cells are rendered in shades of orange, red, and yellow, set against a soft, blurred background of similar colors. The central cell is the most prominent, showing a dense, fibrous structure.

INTENDED AREAS OF FOCUS

It will be the responsibility of the inaugural permanent director to work with the Advisory Board, the University of Adelaide and the Central Adelaide Local Health Network to determine the scientific strategy that will guide the institute's scope and focus.

Nonetheless, at a high level it has been agreed with the Commonwealth Government that the Institute will:

- Provide South Australian patients with access to genomic profiling of their cancers
- Develop immunotherapies, and new cancer therapeutics through cancer research and clinical trials
- Develop and test cutting edge technologies in immunotherapies and genomics to make breakthrough cancer discoveries and develop new cancer tests and treatments
- Enable South Australian patients with rare and less common cancers to participate in the Australian Genomics Cancer Medicine Program
- Train South Australian doctors in new research disciplines
- Leverage evidence-based intervention methodologies to develop and equip the health and medical research workforce
- Establish and support clinical research and provide capacity building initiatives to support further research and policy development
- Consolidate and grow cutting-edge cancer expertise, capacity and infrastructure in immunotherapy and genomics
- Commercialise viable cancer discoveries and cancer clinical trials

Our aim is that by the end of this first planning period in June 2024, we will have established the South Australian Immunogenomics Cancer Institute as a significant contributor to the national cancer research effort, which improved the clinical service environment for cancer patients in South Australia. Its newly recruited research teams will be leading the development of new, more effective and curative approaches to diagnosing and treating cancer for health professionals. And it will have a credible long term viability and sustainability strategy that will ensure the institute's ongoing and independent operation.

GOVERNANCE

The South Australian Immunogenomics Cancer Institute has been established as a School-equivalent within the University of Adelaide's Faculty of Health and Medical Sciences.

The Director will be an employee of the University of Adelaide, with a concurrent appointment as required with CALHN for clinical work.

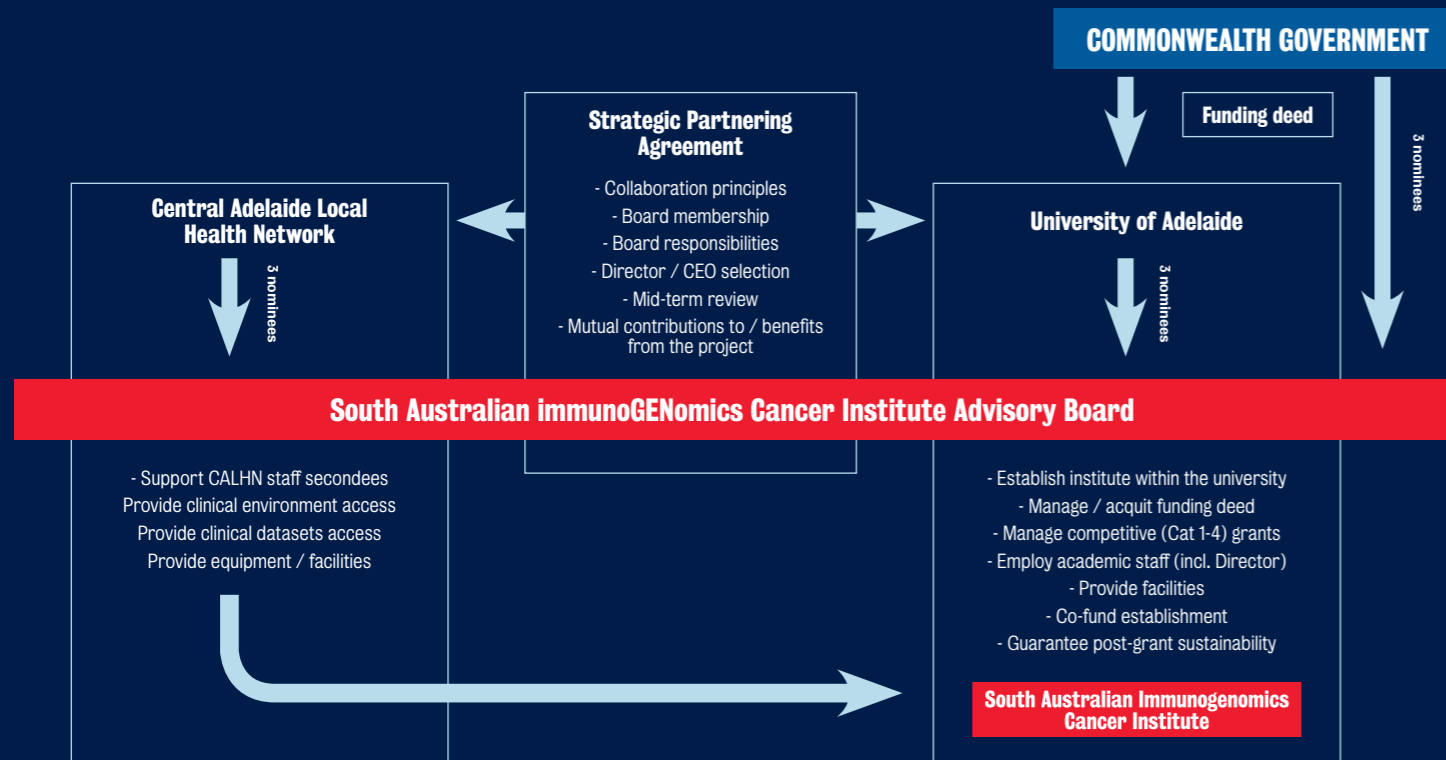
The University of Adelaide and CALHN have established a Strategic Partnering Agreement, and created the Institute Advisory Board with delegated responsibility for guiding the Institute's strategic direction, and within the scope of University delegations and policies, its financial and budget management. On a day to day

basis the Director will be responsible to the Chair of the board; and as an employee of the University of Adelaide, to the Executive Dean of the Faculty.

For a four year period ending in June 2024, the University (and therefore the Institute and its Director) must also satisfy the requirements of the Commonwealth Funding Deed that has made the creation of the institute possible. A series of milestones and performance indicators are explicit in the Deed, and it will be the task of

the Director to oversee compliance with the Deed and ensure that performance expectations and reporting requirements specified within it are met on behalf of the University as the fundholder.

The roles of the University, the Central Adelaide Local Health Network, the Commonwealth Government and the Advisory Board in governing SAiGENCI are broadly as follows:



THE ROLE

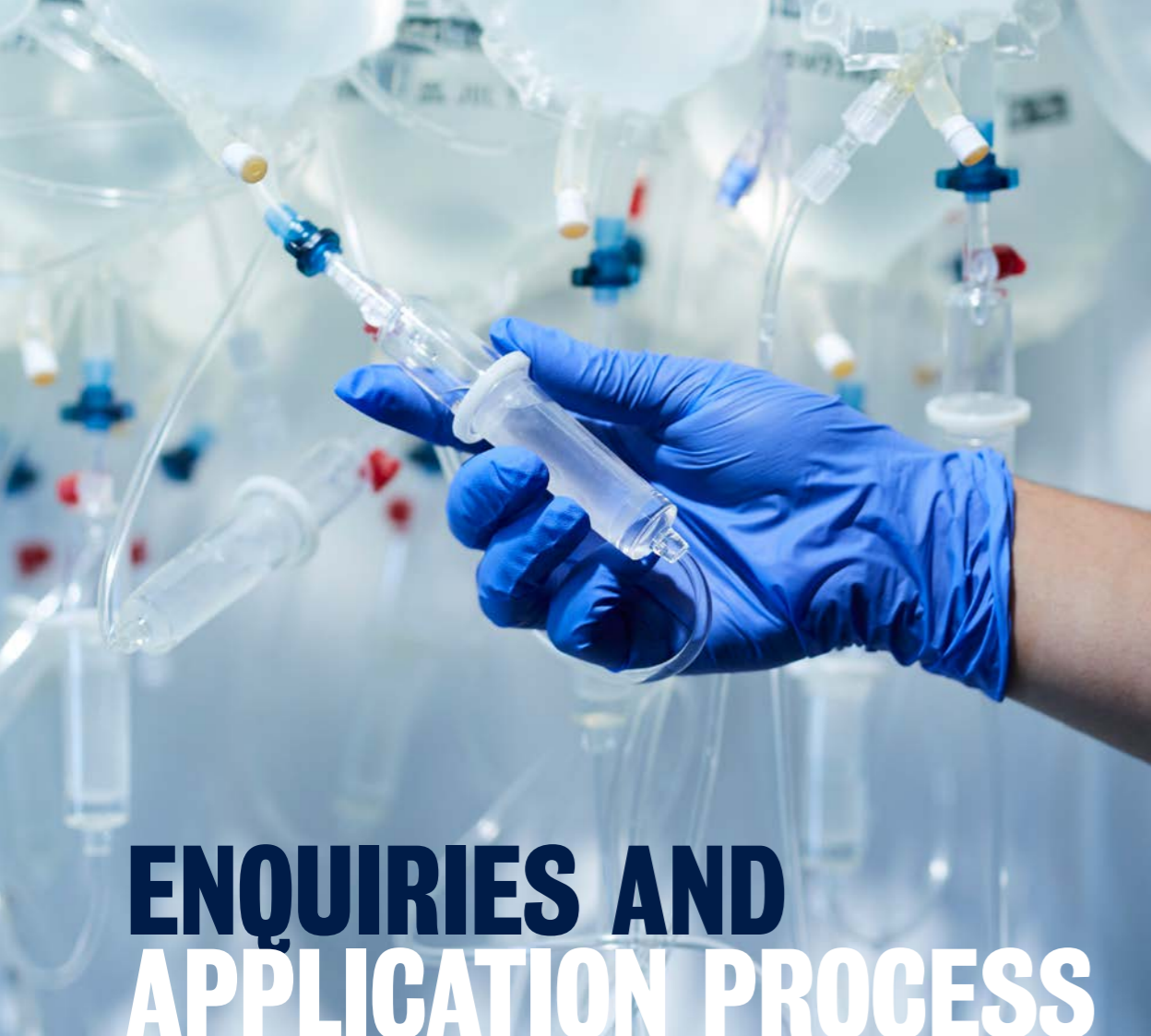
The inaugural permanent director will put in place the foundations for success of the institute into the long term future. Working closely with the Advisory Board, the Director will develop and implement a robust strategic plan, building a strong and sustainable cancer research institute for future years.

In particular, the position will:

- Create an intellectual environment in the Institute that is a magnet for the attraction and retention of clinician academic and cancer research talent, establishing an aggressive national and international recruitment program that builds research, translational and clinical capability in cancer immunotherapy and cell therapy in South Australia.
- Oversee the establishment of platforms and technologies to expand genomic and related (eg epigenomic, transcriptomic, metabolomic) profiling of tumours which will facilitate research, clinical trials, and ultimately, enable precision oncology.
- Ensure the integration of South Australian cancer research, trials, care and education with national networks and programs.
- Partner closely with the Central Adelaide Local Health Network to facilitate the implementation of national cancer care pathways and policies, and to enhance clinical trials access for South Australian patients.
- Contribute to the development of contemporary and cutting edge training programs for clinician scientists, research scientists and the health and medical research workforce.
- Collaborate with partners in the Adelaide Biomedical Precinct to create a world-class clinical trials infrastructure that will attract international industry-sponsored and investigator-led clinical trials.
- Work with the wider University and the Central Adelaide Local Health Network to build relationships within the philanthropic sector that will help to diversify and strengthen the institute's revenues into the long term future.

For success in this role, you will need:

- An established reputation as a respected leader including experience in strategy development and planning, leading change, and evidence of an effective contribution to a leadership team.
- Ambition and the vision to establish a new institution from the ground up.
- A proven ability to work collegially across all sub-disciplines in health and medical research, and to lead the development of a compelling research strategy that brings scientific contributions from a range of disciplines together into a clear, coherent direction.
- The credibility and presence to work with a high level board comprising scientific, clinical, institutional and community leadership and to ensure the development of a common vision for the institute's future.
- The ability to represent the institute, and through this to represent the University and CALHN at the highest levels of academia, government and in the public domain, including in making representations to donors, trusts and foundations, and government.
- A familiarity with if not direct experience of the translation of intellectual property through the process of commercialisation.



ENQUIRIES AND APPLICATION PROCESS

The University has engaged Odgers Berndtson Executive Search to assist with this important appointment.

For a confidential conversation about the position, please contact:

- Kylie Taylor, Senior Researcher
+61 406 340 920
Kylie.Taylor@odgersberndtson.com, or
- Jenny Sutton, Principal
Jenny.Sutton@odgersberndtson.com

Your application

Applications for the role should include the following information:

Candidate statement

A brief Candidate Statement (no more than four pages) outlining your vision for the role and your suitability.

Curriculum vitae

- Full name, home address, confidential email address and mobile contact details
- Nationality and citizenship or confirmation of right to work in Australia
- Positions held, dates, scope of responsibilities and key achievements
- Details of education and qualifications

- Academic track record including publications, grants, HDR students, keynote presentations, conferences, etc.
- Any other relevant information, such as involvement in professional and community activities and memberships.

Referees & date of commencement

- Full contact details of three referees whom the consultant may contact. Referees will be contacted only after prior consultation with you.
- An indication of when you would be available to start.

Applications should be submitted online at www.odgers.com/81500. All applications will receive an automated response.

Should you be unable to submit your application online, please email it to: Kylie.Taylor@odgersberndtson.com

Closing date

Applications will be closing 19 March 2021.

UNIVERSITY VALUES

AT THE UNIVERSITY OF ADELAIDE, WE ARE COMMITTED TO FOSTERING A CULTURE WHERE OUR VALUES ARE AT THE HEART OF EVERYTHING WE DO.

THEY GUIDE THE DECISIONS WE MAKE, THE WAY WE INTERACT AND WHAT WE STAND FOR. OURS IS A CULTURE WHERE WE LIFT EACH OTHER UP, VALUE DIVERSE EXPERIENCES AND PERSPECTIVES, AND CELEBRATE THE ENERGY, DRIVE AND ENTHUSIASM OF A WORKFORCE MOTIVATED TO SUCCEED.

At The University of Adelaide, we value: Integrity, Respect, Collegiality, Excellence and Discovery.



INTEGRITY

We hold ourselves and each other accountable to be honest and fair.



RESPECT

We embrace diversity and uphold the dignity of each individual.



COLLEGIALITY

We explore ideas collaboratively, and are united in our commitment to the University community.



EXCELLENCE

We deliver our best and celebrate outstanding performance.



DISCOVERY

We are committed to learning and we boldly approach the future with curiosity and energy.

LIVING IN SOUTH AUSTRALIA

Adelaide has a bustling, energetic city centre and is renowned for its festivals, cultural life and sporting events. With great shopping, beaches, a cafe culture, affordable student accommodation and friendly residents, Adelaide offers a relaxed lifestyle with all the convenience of city living.

Adelaide has a Mediterranean climate, which means residents enjoy four distinct seasons. The weather perfectly reflects the warmth of character that is embodied by South Australians, renowned for our welcoming, inclusive and hospitable nature.

With so many beautiful parks, green spaces and quiet suburbs, walking and cycling are easy and safe ways to get around, with the city famous for its cafes and restaurants, festivals and entertainment.

The Adelaide Fringe and the Adelaide Festival in February – March, and

Adelaide's Cabaret Festival in June are some of the highlights in the yearly calendar.

The city rests between white sandy beaches and rolling green hills. Beaches offer calm, safe swimming waters, while the hills are a great place to discover some of South Australia's many attractions in a beautiful tree-studded landscape. Further afield are other wine growing regions such as the famous Barossa Valley and farmlands, as well as the magnificent, timeless Flinders Ranges and outback.



A truly liveable city

Safe and relaxed, Adelaide is ranked as one of the world's top 10 most liveable cities.

Source: Economist Intelligence Unit Global Liveability Index 2019.



Australia's most affordable mainland city

Adelaide is one of the most affordable mainland Australian cities, with a cost of living up to 14% lower than Sydney and Melbourne.

Source: Study Adelaide studyadelaide.com



Culturally diverse

South Australians hail from over 120 different countries, creating a wonderful mix of cultures and influences. One in five South Australians were born overseas!



EAST END ENTERTAINMENT PRECINCT

THE UNIVERSITY OF ADELAIDE

RUNDLE MALL

PARLIAMENT HOUSE

ADELAIDE RAILWAY STATION

ADELAIDE FESTIVAL CENTRE

ADELAIDE HEALTH AND MEDICAL SCIENCES BUILDING

ADELAIDE OVAL

ROYAL ADELAIDE HOSPITAL

FOR FURTHER ENQUIRIES

The University of Adelaide SA 5005 Australia

TELEPHONE +61 8 8313 7335

FREE-CALL 1800 061 459

 adelaide.edu.au

 facebook.com/uniofadelaid

 twitter.com/uniofadelaid

 snapchat.com/add/uniofadelaid

 instagram.com/uniofadelaid

 [UniAdelaide_China](#)

 weibo.com/uniadelaide

© The University of Adelaide. Published January 2021
CRICOS 00123M

DISCLAIMER The information in this publication is current as at the date of printing and is subject to change. You can find updated information on our website at adelaide.edu.au or contact us on 1800 061 459. The University of Adelaide assumes no responsibility for the accuracy of information provided by third parties.