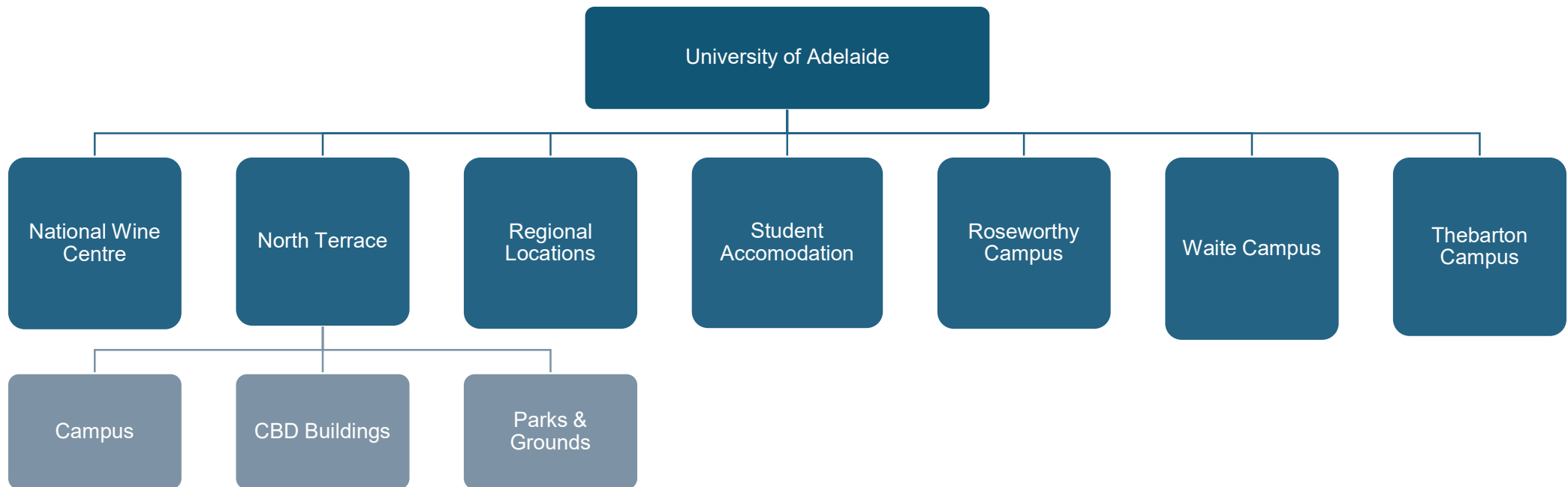


University of Adelaide - Operational Greenhouse Gas Emission Boundary



NOTE: The University of Adelaide is a higher education provider in South Australia with several campuses, leased spaces, sports grounds, research field stations, health facilities, student accommodation sites and a conference centre. The University applies the operational control rule when considering its emission boundary.

The operational boundary includes all properties occupied by University staff and students, whether owned, or leased where the University has operational control. Joint and cooperative ventures located in the buildings at the University facilities are included in the boundary.

In summary, the University has operational control of buildings and sites where:

- *It owns and occupies a building*
- *It is the landlord and requires tenants to comply with its operating and health, safety and wellbeing policies and frameworks*
- *It is a tenant and implements its own operating and health, safety and wellbeing policies and frameworks*
- *Its subsidiaries operate*
- *It leases facilities for research, teaching and accommodation and implements its own operating and health, safety and wellbeing policies and frameworks*