



Connect to eduroam Windows 7

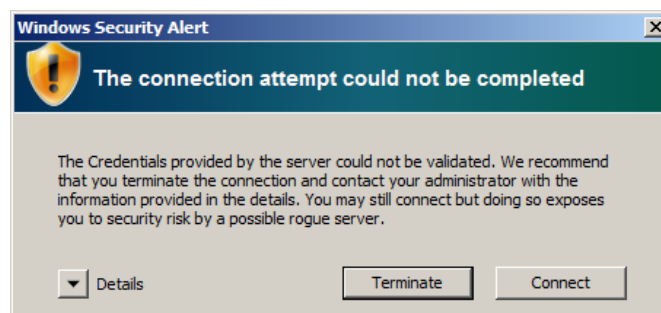
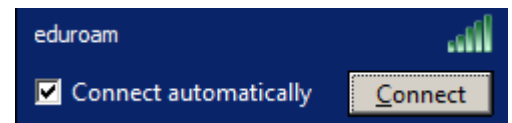
Introduction

This guide will assist you in connecting to the eduroam network, which allows you to connect to over more than half of Australian universities with your UofA credentials. **It is important to note that the username for this network is slightly different than your normal UofA wireless credentials.**

It is strongly recommended that you connect to the eduroam network while on a UofA campus before attempting the connection elsewhere.

Procedure

1. Click the Wireless icon in the taskbar (bottom-right)
2. Select eduroam from the wireless list
3. Press Connect
4. When prompted to log in, enter your University username followed by @adelaide.edu.au (e.g. a1234567@adelaide.edu.au)
5. When prompted with the security alert (see below), press connect.



You will now be connected to eduroam and will be able to access wireless when at another participating University (see <https://admin.eduroam.edu.au/geolocate> for your closest access point)

Contact Us

For further support or questions, please contact the Service Desk on +61 8 8313 3000 or servicedesk@adelaide.edu.au