

URRBRAE HOUSE HISTORIC PRECINCT
SCHOOLS' PROGRAM – YEARS 4 - 6
INFORMATION FOR TEACHERS

YOUR VISIT TO URRBRAE HOUSE

A. BEFORE YOUR VISIT

1. Year level of students

Our regular Schools' program is aimed at **primary students in Years 4 – 6**. It is designed to meet Australian Curriculum requirements in Humanities and Social Sciences at Year 5 *Australian communities – their past, present and possible futures* with its focus on colonial Australia in the 1800s. Key concepts addressed in the program include significance; continuity and change; cause and effect; place and space; interconnections; roles, rights and responsibilities; and perspectives and action.

2. Numbers of students participating in the program in one session

The program is designed for one class with a maximum of 30 students at a time. If your class is larger than 30 students speak to the Urrbrae House Co-ordinator to discuss how we might accommodate your class.

3. Cost (as of 1 January 2023)

\$200.20 (includes GST) per class or
\$143 (includes GST) per equity class (Index of Educational Disadvantage Category 1-4 school).



4. Allergies and special needs

Urrbrae House is a two-storey heritage-listed building and the lower level of the house is accessible by stairs only. Please advise the Urrbrae House Co-ordinator if a student in your class cannot manage stairs.

Please advise us **in advance** of any issues or conditions that might affect a student's participation in the program. We are happy to discuss how we may work with you to facilitate the participation of students who have special needs.

In particular, it is important to know if any students have allergies as students may be involved in food preparation and various types of morning tea are given to all students during their visit (see section 16 below). Ladies who are the guests of Mrs Waite may have contact with glue made from cornflour and water during card-making activities if the weather is rainy.

Where a student has significant special needs please assist them by providing appropriate carer/s.



**URRBRAE HOUSE HISTORIC PRECINCT
SCHOOLS' PROGRAM – YEARS 4 - 6
INFORMATION FOR TEACHERS**

5. Health, Welfare and Safety

When visiting Urrbrae House you and your students are entering a building constructed in 1891 as a family home. The original balustrades (railings) around the outside verandahs and the inside Main Hall stairs are much lower than those in more recent buildings. All visitors are asked to take care not to lean on or over the balustrades.

All Urrbrae House staff and volunteers involved in our Schools' Program are required to have a "Working with Children Check (WWCC)". We do not allow other members of the public into Urrbrae House while the program is in operation.

Our volunteers and staff must follow the University's *Safe Environments for Children and Vulnerable People Policy*. In addition they must agree to actions outlined in the local area document *Child Safe Environment – Urrbrae House Code of Conduct – Working with Children and Young People*. For more information see <https://www.adelaide.edu.au/waite-historic/urrrbrae-house-precinct/education/child-safe-environment>

The Urrbrae House Co-ordinator is a trained first aider and there are two First Aid boxes in the house. In the event of an emergency evacuation of Urrbrae House, our staff and volunteers will lead all visitors to our emergency evacuation assembly point which is the large area of lawn to the west of the building.

6. Covid Safety

To minimise risks to all

- We ask that hand sanitiser (supplied near the front door) be used on entry to the building by everyone.
- Our staff and volunteers do not to participate in the program if unwell, and we ask that students and staff who are unwell do not attend the program.
- Objects such as ink pens in the Schoolroom and card-making brushes are wiped with disinfectant wipes between uses by different children.
- Social distancing is encouraged where possible.
- Our staff and volunteers follow the latest University of Adelaide and SA Health requirements and recommendations where possible.

7. Preparation at school before your visit

We find that students gain even more from their participation in our program if teachers have prepared their students in advance by at least discussing with the students who the Waites were and what life might have been like in the 1890s.

Please make your students aware that once they enter Urrbrae House the experience will be like "stepping back in



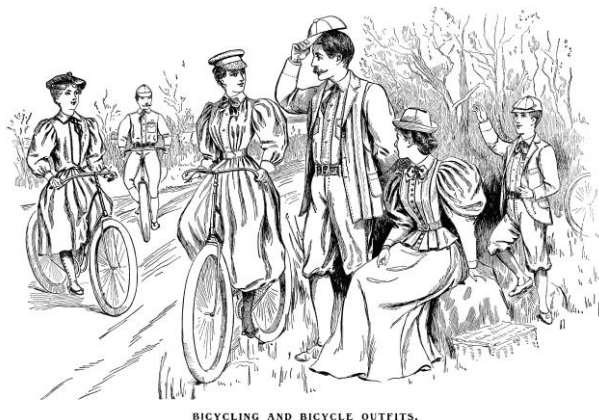
URRBRAE HOUSE HISTORIC PRECINCT SCHOOLS' PROGRAM – YEARS 4 - 6 INFORMATION FOR TEACHERS

time” or “being characters in a play.” Students will need to use their imaginations.

Students will be referred to by their newly acquired Victorian names (name badges are supplied and worn) and all conversations will be conducted as if we are in 1892. During the program all our staff and volunteers remain in their 1890s characters. Discussions about computers, television and electronic game systems will be met with bewilderment.

8. Students' personal belongings

Please aim to keep carry bags to a minimum. While in the house, students' belongings (“luggage” in 1892) such as bags, drink bottles and school hats will be stored until the end of their visit.



BICYCLING AND BICYCLE OUTFITS.

9. How to get to Urrbrae House

If coming by car or bus enter the property from Fullarton Road at Urrbrae into Walter Young Avenue. Buses may park near the front of the house in the circular driveway. Cars should park in the signposted Urrbrae House carpark. Visiting groups are met at the front door of the house.

If coming by public transport, the nearest access by bus is via Bus route 170 to stop 23 on Waite Road. From

there enter Gate 3 of the Waite Campus and walk west for a minute or two to the rear of Urrbrae House. Follow the path to the front door.

Alternatively, you can take Bus route 171 to stop 12 on Fullarton Road and then walk up the long driveway (Walter Young Avenue). The walk can take 15 minutes or more depending on your pace.

As Adelaide Metro timetables may change check public transport information nearer to the time of your visit on the Adelaide Metro website <https://www.adelaidemetro.com.au>

10. Adults accompanying students on their visit

We understand that parents/carers often assist with transporting students by car on school excursions and expect that your class will have some supervising adults accompanying the students. We look forward to having these parents, carers and teachers enter into the spirit of our recreated historical experience.

However, because of the size of some of the rooms in Urrbrae House and the nature of the activities being undertaken it is not practical to have large numbers of adults accompanying

URRBRAE HOUSE HISTORIC PRECINCT
SCHOOLS' PROGRAM – YEARS 4 - 6
INFORMATION FOR TEACHERS

students inside the house. **We expect at least 3 and no more than 8 adults** from your school to be attending with one class.

Accompanying adults are asked to allow Urrbrae House staff and volunteers to direct the morning's activities. While we appreciate parents' enthusiasm to get involved, we ask that they do not take over activities from their children as this lessens the students' learning experience.

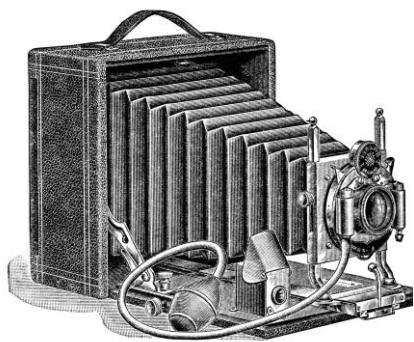
11. Pre-school children

We understand that parents/carers may wish to bring the younger siblings of students on your excursion. However, because of Urrbrae House's heritage status, possible safety issues with stairs and the nature of the activities undertaken in our Schools' Program, it is **not possible** to have pre-school children including infants in the house while the program is underway.

12. Photography and mobile phones

While digital cameras, mobile phones and iPads did not exist in 1892, teachers and adults accompanying students to Urrbrae House are most welcome to take photographs/video during their visit. However, we ask that this be done with sensitivity and discretely so as not to interrupt the flow of activities being undertaken.

Urrbrae House is a museum where we preserve our heritage for future generations. If taking photographs of antique items (especially those that might be damaged by bright light such as old newspapers, books and paintings) do not use flash photography.



In general we do not encourage students to bring along cameras as having students stop their activities to take photographs can be very disruptive to their educational experience. If students do bring cameras these should be carried by accompanying adults during the morning.

We understand that teachers and accompanying adults need to be contactable during their visit in case of emergencies. However, we ask that visitors do not use their mobile devices to text, make phone calls or check their emails/social media accounts during the visit unless there is an emergency.

13. Dividing your class into subgroups

Prior to your arrival at Urrbrae House please divide your Year 4 - 6 class into **three** sub-groups of equal numbers keeping a gender balance in each sub-group if possible.

**URRBRAE HOUSE HISTORIC PRECINCT
SCHOOLS' PROGRAM – YEARS 4 - 6
INFORMATION FOR TEACHERS**

B. AT URRBRAE HOUSE

14. Start and finish times

Our program begins promptly at **10.00am** and finishes at **12.30pm**. If your class has to travel some distance to reach Urrbrae House, we recommend you arrive by 9.50am so that students can use toilet facilities (located adjacent to the Urrbrae House gardens at the rear of the house) if needed before the program starts.

Because of the set-up required in the house on the morning of your visit we are unable to let your class into the house before 10.00am without prior arrangement.

If your class must leave before 12.30pm please advise the Urrbrae House Co-ordinator **in advance** of your visit as we will need to adjust our schedule of activities to accommodate this.

15. Arrival

Your group will be met at the front door of Urrbrae House by the “housekeeper” who will briefly outline to students the way the program will operate during the morning.

16. The three subgroups: Ladies and Gentlemen, Schoolchildren and Servants

Each group takes on a different social status during the morning:

- a) ladies and gentlemen who are guests of the Waites;
- b) schoolchildren who have lessons with the governesses; and
- c) servants.

It is very helpful if you can aim for gender balance in your ladies and gentlemen group even if gender balance is not possible in the other two groups. Students in the ladies and gentlemen group will be expected to engage in polite conversation with the Waites over a formal morning tea. These students should be asked to imagine that they live in a large, grand house like Urrbrae House and have servants of their own.



Once inside the house, every student is given a name badge and an article of costume appropriate to their status to wear over their existing clothing such as a vest, apron, pinafore or lace collar to help create the illusion of being back in 1892. Costumes are returned to our staff and volunteers at the end of the program but students may keep their Victorian name badges as souvenirs of their visit to Urrbrae House.

**URRBRAE HOUSE HISTORIC PRECINCT
SCHOOLS' PROGRAM – YEARS 4 - 6
INFORMATION FOR TEACHERS**

Each group will undertake different activities in different parts of the house as befits their assigned social status during the program but all students will get to tour the house. For example, the Ladies and Gentlemen will (weather permitting) play croquet with the Waites, the Schoolchildren practice writing with ink pens, and the Servants prepare morning tea and work in the laundry. Having different experiences enables students to discuss these differences with their classmates on their return to school.

The three groups come together at the end of the morning to play a game of Signalman (similar to Musical Chairs except students try to find a seat in the train carriage when the train whistle blows).

17. Morning tea

Morning tea is provided to all students as part of their visit to Urrbrae House. The morning tea varies depending on the students' 1892 social status:



- a) ladies and gentlemen who are guests of the Waites:
 - ❖ Cucumber sandwiches made on-site by the servants [*white bread, Dairy Soft (Extra soft), continental cucumber*]
 - ❖ Victoria sponge cake [*shop-bought unfilled sponge cake, strawberry or raspberry jam, whipped cream, caster sugar*]
 - ❖ Lemon tea [*Bickfords lemon cordial and water*]
- b) schoolchildren and servants:
 - ❖ Fruit scones made on-site by the children servants [*white self-raising flour, butter, milk, sultanas, sugar, Dairy Soft (Extra soft)*]
(If for any reason the scones are not edible we have simple biscuits such as shop-bought shortbreads available as a back-up. This has only happened once in the last decade.)
 - ❖ Slices of fresh oranges
 - ❖ Lemonade [*Bickfords lemon cordial and water*]

Water is available as an alternative to the "lemon tea/lemonade".

As the servants are involved in food preparation for the morning tea, please do not assign a student to the Servants' group if they have any condition that means it is not safe for them to be involved in food handling. For example, the student has coeliac disease, relevant food allergies, injuries to their hands or skin conditions on their hands which might impact on their ability to handle food safely.

If any student is unable to eat the food provided by the program please have them bring along a suitable alternative for their morning tea.

**URRBRAE HOUSE HISTORIC PRECINCT
SCHOOLS' PROGRAM – YEARS 4 - 6
INFORMATION FOR TEACHERS**

18. Use of equipment by students

Students assigned as servants who are involved in food preparation and laundry work may, under adult supervision, be using implements such as knives, scone cutters, graters, a hand-operated mincer (to mince dry bread crumbs), a manual coffee grinder and washboards.

C. FURTHER INFORMATION

Please check out our webpage for additional information and resources.

<https://www.adelaide.edu.au/waite-historic/urrbrae-house-precinct/education>

If you have any queries please do not hesitate to contact:

Kathryn Pearson, Urrbrae House Co-ordinator - Phone 08 8313 7497 or
email urrbraehouse@adelaide.edu.au

Lynette Zeitz, Manager, Urrbrae House Historic Precinct - Phone 08 8313 7425 or
email urrbraehouse@adelaide.edu.au

Victorian images used in these notes may be found at *The Old Design Shop: Vintage Image Treasury*
<https://olddesignshop.com>