

URRBRAE HOUSE HISTORIC PRECINCT  
SCHOOLS' PROGRAM –JUNIOR - YEARS 1 - 2  
INFORMATION FOR TEACHERS 2024

## YOUR VISIT TO URRBRAE HOUSE

### A. BEFORE YOUR VISIT

#### 1. Year level of students

Our **junior program** is aimed at **primary students in Years 1-2**. It is designed to meet Australian Curriculum requirements in Humanities and Social Sciences at Year 1 *How my world is different from the past and can change in the future* with its focus on family life in previous generations. Key concepts addressed in the junior program include significance; continuity and change; place and space; roles, rights and responsibilities; and perspectives and action.

#### 2. Numbers of students participating in the program in one session

The program is designed for one class with a maximum of 30 students at a time. If your class is larger than 30 students please speak to the Urrbrae House Co-ordinator to discuss how we might accommodate your class.



#### 3. Cost (as of 1 January 2024)

\$228.80 (includes GST) per class or

\$150.15 (includes GST) per equity class (Public Schools' Index of Educational Disadvantage Category 1-4 school)

#### 4. Special needs and allergies

Urrbrae House is a two-storey heritage-listed building and the lower level of the house is accessible by stairs only. Please advise the Urrbrae House Co-ordinator if a student in your class cannot manage stairs.

We ask you to advise us ***in advance*** of any issues or conditions that might affect a student's participation in the program. We are happy to discuss how we may work with you to facilitate the participation of students who have special needs. Where a student has significant special needs please assist them by providing appropriate carer/s when at Urrbrae House.

It is important to know if any students have allergies as students may be in contact with food products and a set morning tea is given to all students during their visit (see sections 16 and 17). Students will have contact with glue made from cornflour and water during their card-making.



**If any student is unable to eat the food provided by the program please have them bring along a suitable alternative for their morning tea.**

**URRBRAE HOUSE HISTORIC PRECINCT  
SCHOOLS' PROGRAM –JUNIOR - YEARS 1 - 2  
INFORMATION FOR TEACHERS 2024**

## 5. Health, Welfare and Safety

When visiting Urrbrae House you and your students are entering a building constructed in 1891 as a family home. The original balustrades (railings) around the outside verandahs and the inside Main Hall stairs are much lower than those in more recent buildings. All visitors are asked to take care not to lean on or over the balustrades.

All Urrbrae House staff and volunteers involved in our Schools' Program are required to have a "Working with Children Check (WWCC)". We do not allow other members of the public into Urrbrae House while the program is in operation.

Our volunteers and staff must follow the University's *Safe Environments for Children and Vulnerable People Policy*. In addition they must agree to actions outlined in the local area document *Child Safe Environment – Urrbrae House Code of Conduct – Working with Children and Young People*. For more information see <https://www.adelaide.edu.au/waite-historic/urrrbrae-house-precinct/education/child-safe-environment>

The Urrbrae House Co-ordinator is a trained first aider and there are two First Aid boxes in the house. In the event of an emergency evacuation of Urrbrae House, our staff and volunteers will lead all visitors to our emergency evacuation assembly point which is the large area of lawn to the west of the building.



## 6. Minimising the spread of infections (such as COVID-19)

To minimise risks to all

- We ask that hand sanitiser (supplied near the front door) be used on entry to the building by everyone.
- Our staff and volunteers do not to participate in the program if unwell.
- We ask that your students, staff and/or volunteers who are unwell do not attend the program.
- Objects such as ink pens in the Schoolroom and card-making brushes are wiped with disinfectant wipes between uses by different children.
- Our staff and volunteers follow the latest University of Adelaide and SA Health requirements and recommendations where possible.

## 7. Preparation at school before your visit

We find that students gain even more from their participation in our program if teachers have prepared their students in advance by at least discussing with the students who the Waites were and what life might have been like in the 1890s.

Please make your students aware that once they enter Urrbrae House the experience will be like "stepping back in time" or "being characters in a play." Students will need to use their imaginations.

## URRBRAE HOUSE HISTORIC PRECINCT SCHOOLS' PROGRAM –JUNIOR - YEARS 1 - 2 INFORMATION FOR TEACHERS 2024

Students will be referred to by their newly acquired Victorian names (name badges are supplied and worn) and all conversations will be conducted as if we are in 1892. During the program all our staff and volunteers remain in their 1890s characters. Discussions about computers, television and electronic game systems will be met with bewilderment.

### 8. Students' personal belongings

Please aim to keep carry bags to a minimum. While in the house, students' belongings ("luggage" in 1892) such as bags, drink bottles and school hats will be stored under tables in the Main Hall until the end of their visit.



### 9. How to get to Urrbrae House

If coming by car or bus enter the property from Fullarton Road at Urrbrae into Walter Young Avenue. Buses may park near the front of the house in the circular driveway so long as they do not block access to the front of the building. Cars should park in the signposted Urrbrae House carpark. Visiting groups are met at the front door of the house.

If coming by public transport, the nearest access by bus is via Bus route 170 to stop 23 on Waite Road. From there enter Gate 3 of the Waite Campus and walk west for a minute or two to the rear of Urrbrae House. Follow the path to the front door.

Alternatively, you can take Bus route 171 to stop 12 on Fullarton Road and then walk up the long driveway (Walter Young Avenue). The walk can take 15 minutes or more depending on your pace.

As Adelaide Metro timetables may change please check public transport information nearer to the time of your visit on the Adelaide Metro website <https://www.adelaidemetro.com.au>

### 10. Adults accompanying students on their visit

We understand that parents/carers often assist with transporting students by car on school excursions and expect that your class will have some supervising adults accompanying the students. We look forward to having these parents, carers and teachers enter into the spirit of our recreated historical experience.

However, because of the size of some of the rooms in Urrbrae House and the nature of the activities being undertaken it is not practical to have large numbers of adults accompanying students inside the house. We expect **at least 4 and no more than 8 adults** to be attending with one class.

**URRBRAE HOUSE HISTORIC PRECINCT  
SCHOOLS' PROGRAM –JUNIOR - YEARS 1 - 2  
INFORMATION FOR TEACHERS 2024**

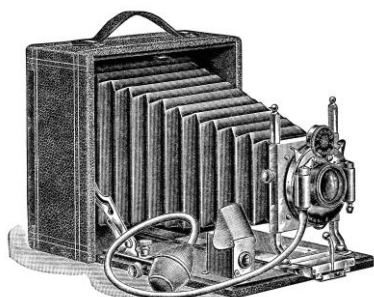
Accompanying adults are asked to allow Urrbrae House staff and volunteers to direct the morning's activities. While we appreciate parents' enthusiasm to get involved, we ask that they do not take over activities from their children as this lessens the students' learning experience.

### **11. Pre-school children**

We understand that parents/carers may wish to bring the younger siblings of students on your excursion. However, because of Urrbrae House's heritage status, possible safety issues with stairs and the nature of the activities undertaken in our Schools' Program, it is **not possible** to have pre-school children including infants in the house while the program is underway.

### **12. Photography and mobile phones**

While digital cameras, mobile phones and iPads did not exist in 1892, teachers and adults accompanying students to Urrbrae House are most welcome to take photographs and video during their visit. However, we ask that this be done with sensitivity and discretely so as not to interrupt the flow of activities being undertaken.



Urrbrae House is a museum where we preserve our heritage for future generations. If taking photographs of antique items (especially those that might be damaged by bright light such as old newspapers, books and paintings) do not use flash photography.

In general we do not encourage students to bring along cameras as having students stop their activities to take photographs can be very disruptive to their educational experience. If students do bring cameras these should be carried by accompanying adults during the morning.

We understand that teachers and accompanying adults need to be contactable during their visit in case of emergencies. However, we ask that visitors do not use their mobile devices to text, make phone calls or check their emails/social media accounts during the visit unless there is an emergency.

### **13. Dividing your class into subgroups**

Prior to your arrival at Urrbrae House please divide your class into **four** subgroups of equal numbers.



**URRBRAE HOUSE HISTORIC PRECINCT  
SCHOOLS' PROGRAM –JUNIOR - YEARS 1 - 2  
INFORMATION FOR TEACHERS 2024**

**B. AT URRBRAE HOUSE**

**14. Start and finish times**

Our program begins promptly at **10.00am** and finishes at **12.30pm**. We highly recommend you arrive by **9.50am** so that students can use toilet facilities (located adjacent to the Urrbrae House gardens at the rear of the house) before the program starts. Having to take many individual students to the toilets during the program can be disruptive to their learning experience and interrupt the flow of activities during the morning.

Because of the set-up required in the house on the morning of your visit we are unable to let your class into the house before 10.00am without prior arrangement.

If your class must leave before 12.30pm please advise the Urrbrae House Co-ordinator **in advance** of your visit as we will need to adjust our schedule of activities to accommodate this.



**15. Arrival**

Your group will be met at the front door of Urrbrae House by the “housekeeper” who will briefly outline to students the way the program will operate during the morning.

**16. Structure of the Program**



Each of the four subgroups is assigned a group leader who is one of the historic characters from 1892 such as Mrs Waite. The group leader takes the children to various areas of the house during the morning where the children undertake hands-on activities and meet other characters such as the governess and household servants. All students are deemed to be visiting “young ladies and gentlemen” and they all undertake the same activities during the morning but the subgroups undertake these activities at different times.

Once inside the house, every student is given a name badge and an article of costume to wear over their existing clothing (lace collars for girls, vests for boys) to help create the illusion of being back in 1892.

Costumes are returned to our staff and volunteers at the end of the program but students may keep their Victorian name badges as souvenirs of their visit to Urrbrae House.



**URRBRAE HOUSE HISTORIC PRECINCT  
SCHOOLS' PROGRAM –JUNIOR - YEARS 1 - 2  
INFORMATION FOR TEACHERS 2024**

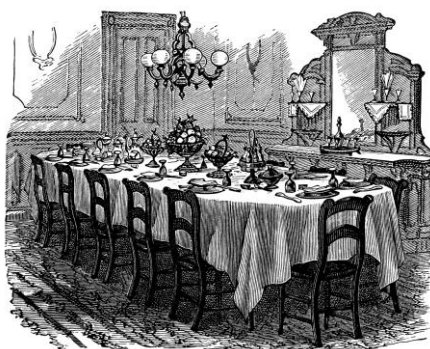
Activities undertaken by the young students include:

- a) guessing the use of various domestic items such bed warmer, rug beater, washing dolly, charcoal iron, hair curling tongs and travelling tie press in the Kitchen and Laundry, seeing a demonstration of an 1892 washing machine and (weather permitting) collecting eggs [egg hunt] in the garden;
- b) making cards using pressed flowers and paper cuttings with one of the ladies in the Drawing Room;
- c) learning how to use nib pens and ink in the Schoolroom with the governess;
- d) seeing inside the Library, Billiard Room and Miss Eva's Bedroom; and
- e) having morning tea in the Dining Room seated around the Waite family's 1876 oak table.

The four groups come together at the end of the morning to play a Victorian era parlour game known as "Signalman" (similar to Musical Chairs except students try to find a seat in the train carriage when the train whistle blows).

### **17. Morning Tea in the Dining Room**

All students are served the same morning tea by our Maids (program volunteers):



- a) Shortbread biscuits (commercially produced)
- b) Slices of fresh oranges
- c) Lemonade [*Bickfords lemon cordial and water*]. Water is available as an alternative to the "lemonade".

As mentioned above if any student is unable to eat the food provided by the program please have them bring along a suitable alternative for their morning tea.

### **C. FURTHER INFORMATION**

Please check out our webpage for additional information and resources.

<https://www.adelaide.edu.au/waite-historic/urrbrae-house-precinct/education>

If you have any queries please do not hesitate to contact:

Kathryn Pearson, Urrbrae House Co-ordinator - Phone 08 8313 7497 or  
email [urrbraehouse@adelaide.edu.au](mailto:urrbraehouse@adelaide.edu.au)

Lynette Zeitz, Manager, Urrbrae House Historic Precinct - Phone 08 8313 7425 or  
email [urrbraehouse@adelaide.edu.au](mailto:urrbraehouse@adelaide.edu.au)

Victorian images used in these notes may be found at *The Old Design Shop: Vintage Image Treasury*  
<https://olddesignshop.com>